

Our Future Water Supply

The Willamette Water Supply System Commission (WWSS Commission) is an Oregon intergovernmental entity formed by Tualatin Valley Water District (TVWD), the City of Hillsboro, and the City of Beaverton. The WWSS Commission was formed to own, operate, manage and maintain the WWSS. TVWD has been designated the Managing Agency for the WWSS Commission, and TVWD operates the Willamette Water Supply Program (WWSP) to plan, design, and construct the WWSS. The WWSS will provide an additional resilient water supply for Washington County. When complete, the WWSS will be one of Oregon’s most seismically-resilient water systems—built to better withstand natural disasters, protect public health, and speed regional economic recovery through restoring critical services more quickly. The new system will be completed by 2026.

Willamette Water Supply *Monthly Progress Report*

Our Reliable Water

Month End **October 2024**

Operations Planning Sets Up WWSS for Success

The WWSP has been proactively planning for long-term operations of the WWSS since starting its design. Now, as construction nears completion, staff have begun to implement operational strategies and prepare for full-time operation in 2026.

The Operations Plan will serve as the guiding document for WWSS operations. A draft version of the plan will be presented to the WWSS Board in June 2025 for approval. Staff have diverse roles in long-term operations; from operators running the facilities and maintaining assets in the field, to the water resources team monitoring water quality and reporting, to accounting staff managing long-term contracts, to information technology (IT) staff governing the electronic data and communications.

The Operations Plan will cover critical aspects of operating the WWSS when it is commissioned and brought online, including:

- Administration and decision-making
- Staffing and training
- Safety and security
- Water quality management
- Standard operating procedures
- Asset maintenance and management
- Permitting obligations and regulatory compliance
- Emergency preparedness
- IT services and data management

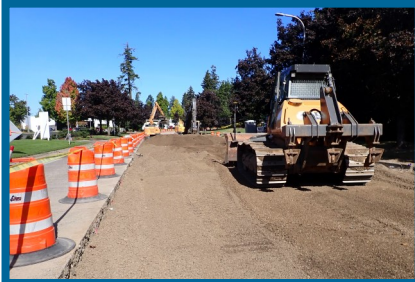
One of the current focus areas for operations planning is staffing and training. The WWSS agencies are currently hiring water treatment plant operators, maintenance staff, and other positions to fill the roles for long-term operations. New personnel need to be in place and trained by the time the system is operational. Videos are being recorded to capture standard operating procedures and maintenance techniques for new equipment and water treatment processes. These videos will be used to train new staff as they are hired, and as long-term resources for the WWSS.

Operations Training Videos in Progress



Project of the Month

The WWSP is well underway with all projects currently in the construction phase or complete. The photos below highlight Phase 3 of the Wilsonville Area Pipeline Project (PLM_1.3). Additional information on the project is available at <https://www.ourreliablewater.org/wilsonville-area-pipeline-project/>.



Contractor preparing for temporary paving on SW 95th Ave.



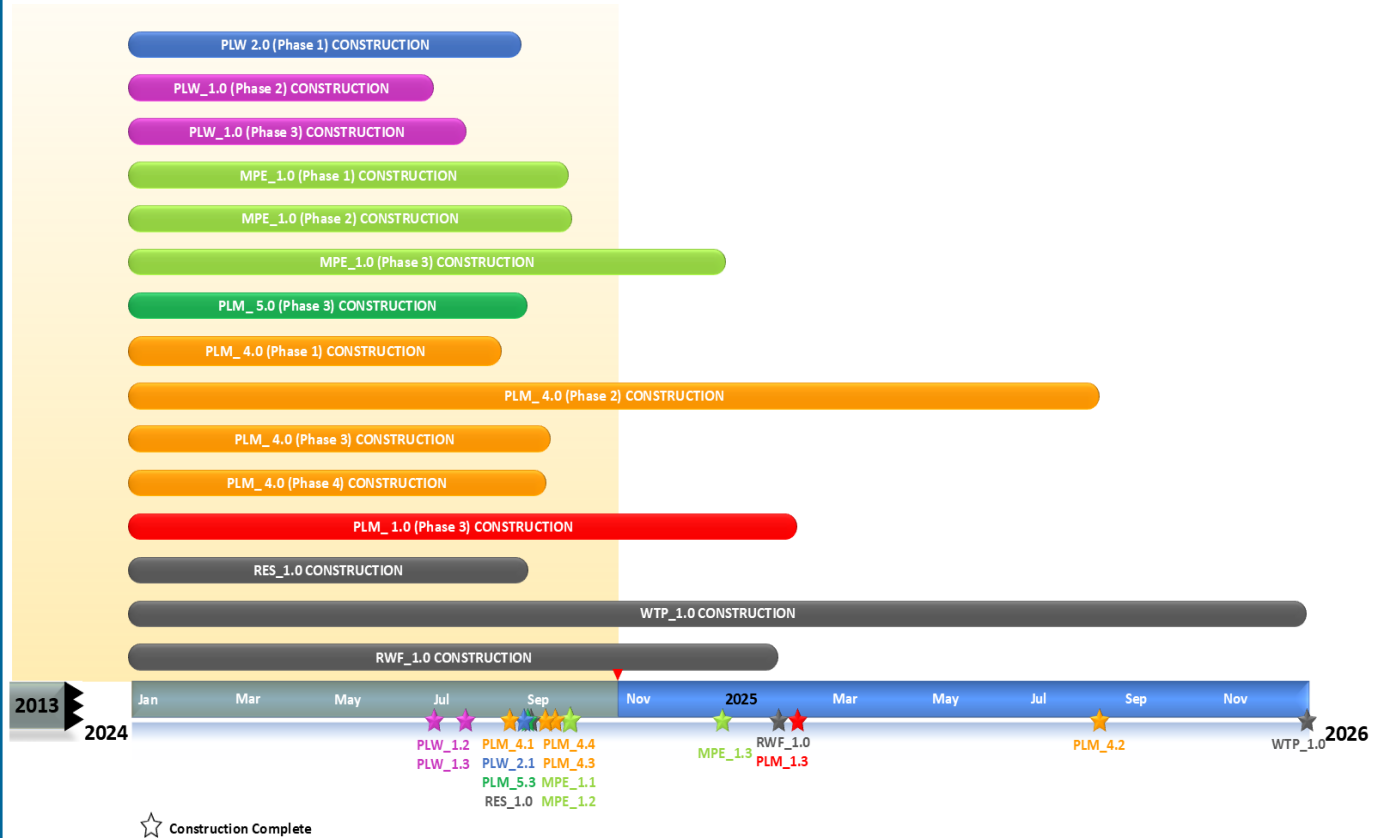
Excavator being used to prepare for temporary paving on SW 95th Ave.



Mini excavator grading rock in a parking lot to prepare for paving

Schedule Summary

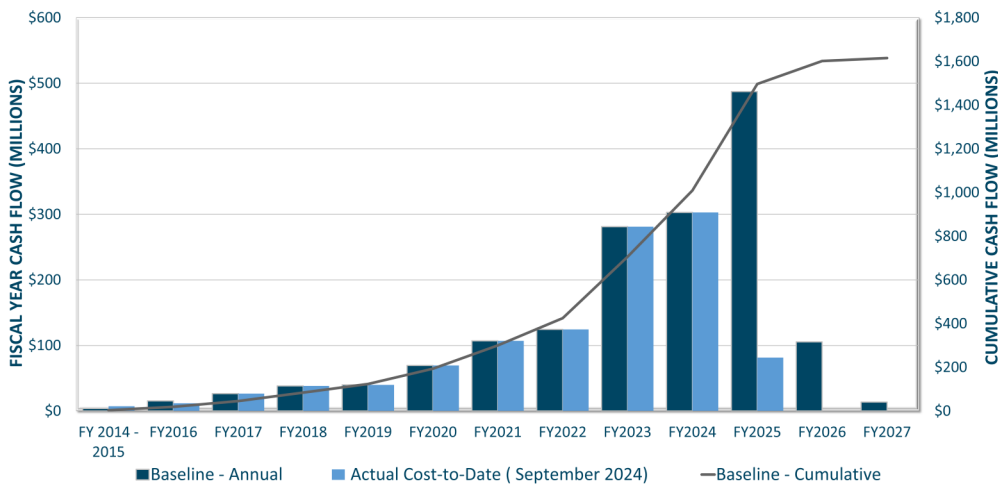
WWSP design and planning began in 2013; the Willamette Water Supply System is expected to be in service by July 2026. Below are the major milestones and activities forecasted from 2024 to 2026*. The WWSP team is committed to on-time delivery. See page 4 for descriptions of the projects referenced below.



*The actual duration of projects continues to be refined and is subject to change.

Forecast Cost Summary

The graph below illustrates the projected WWSP cash flow by fiscal year (FY July 1 to June 30)*. The cumulative cash flow establishes the budgeted \$1.6 billion, which accounts for actual and current projected costs, including projected escalation in the cost of labor, materials, and equipment required to build WWSP projects.



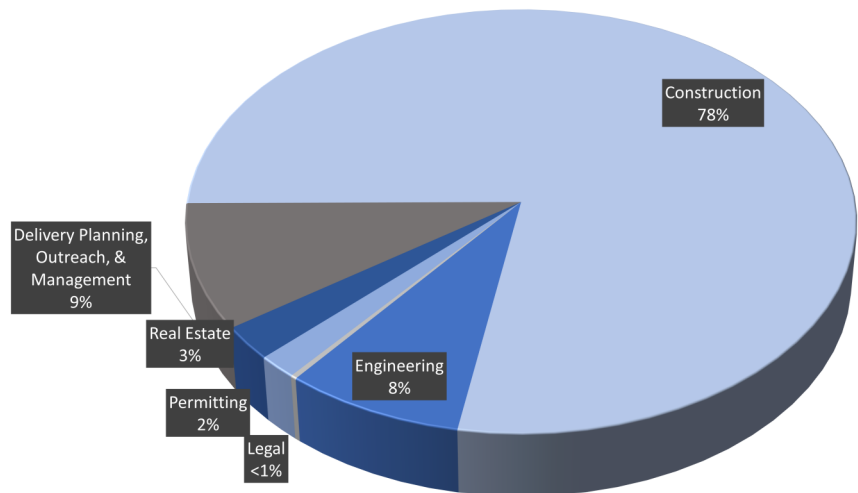
Costs to date for FY 2025 are \$81.4 million. Cumulative costs are projected to be \$1.4 billion through the end of FY 2025.

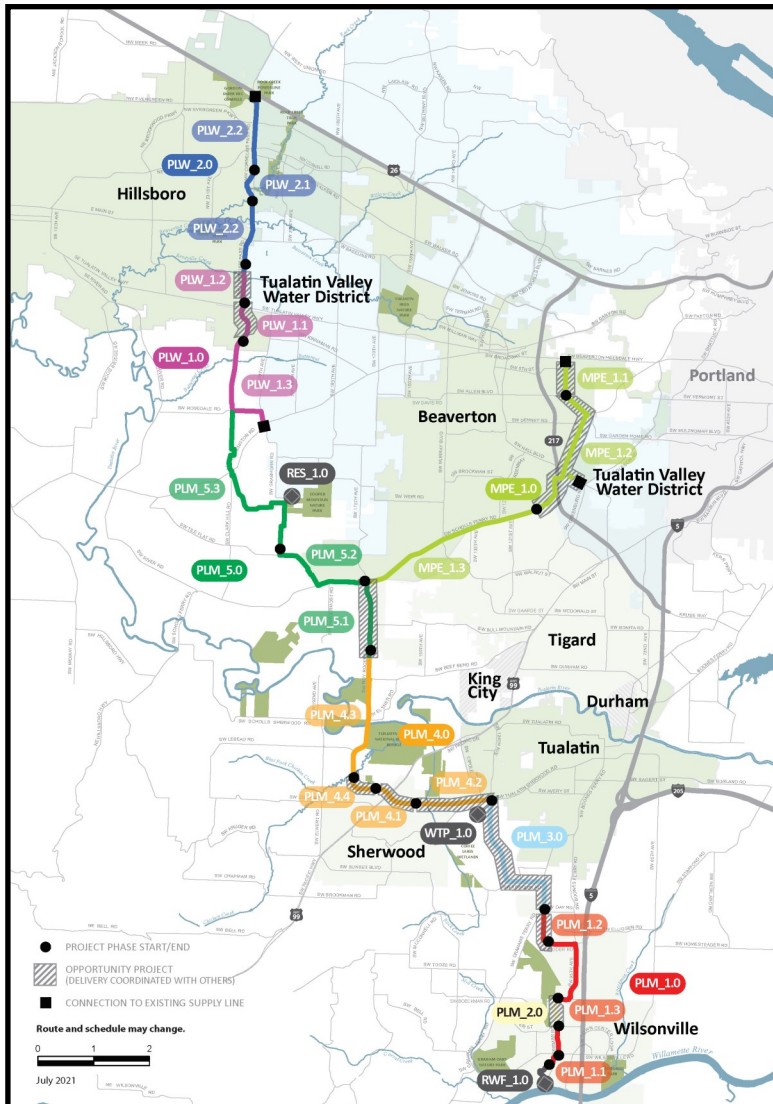
*Current program forecast at completion may vary from baseline cumulative budget due to interim approved changes.

Cumulative Cost Summary

WWSP cumulative costs are tracked and updated monthly. The chart below summarizes the distribution of cumulative costs through September 2024.

Cumulative Water Supply Program costs to date are approximately \$1.09 billion, with the majority spent on planning, engineering, and construction.





PLW_2.0 Cornelius Pass Rd Pipeline Project
(SE Frances St. to Highway 26)

Description: 3.3-mile water pipeline along NE Cornelius Pass Rd. from SE Frances St. to Hwy 26 with Phase 1 consisting of 0.7 miles of pipeline beginning at Orenco Woods Nature Park; connects to existing supply lines for City of Hillsboro and TVWD.

Status: Phase 1: Complete; Phase 2: Deferred

PLW_1.0 South Hillsboro Area Pipeline Project
(SW Farmington Road to Frances Street)

Description: 4-mile water pipeline from SW Farmington Rd. at SW 209th Ave. to NE Cornelius Pass Rd. at SE Frances St.

Status: Phase 1: Complete; Phase 2: Complete; Phase 3: Complete

MPE_1.0 Metzger Pipeline East Project
(SW Roy Rogers Road to Beaverton Hillsdale Hwy)

Description: 7.3-mile water pipeline to be built along SW Scholls Ferry Rd. between SW Roy Rogers Rd. and SW Allen Blvd.; connects to Metzger service area at SW Oleson Rd. and TVWD's system.

Status: Phase 1: Complete; Phase 2: Complete; Phase 3: Construction

RES_1.0 South Beaverton Area Water Storage Tanks (Storage Tanks)

Description: One 15-million gallon storage tank located on Cooper Mountain.

Status: Complete

PLM_5.0 Scholls Ferry Rd Area Pipeline Project
(North of SW Beef Bend Road to SW Rosedale Road)

Description: 7-mile water pipeline from SW Roy Rogers Rd. 0.5-mile north of SW Beef Bend Rd. to SW Rosedale Rd.

Status: Phase 1: Complete; Phase 2: Complete; Phase 3: Complete

PLM_4.0 Tualatin-Sherwood Area Pipeline Project
(SW 124th Avenue to north of SW Beef Bend Road)

Description: 5.3-mile water pipeline from SW 124th Ave. at SW Tualatin-Sherwood Rd. along SW Roy Rogers Rd. to 0.5 miles north of SW Beef Bend Rd.

Status: Phase 1: Complete; Phase 2: Construction; Phase 3: Complete; Phase 4: Complete

PLM_3.0 124th Avenue Partnership Project
(SW 124th Avenue Extension)

Description: 2.7-mile water pipeline from SW Grahams Ferry Rd. at SW Day Rd. to SW 124th Ave. at SW Tualatin-Sherwood Rd.

Status: Complete

PLM_2.0 Kinsman Road Partnership Project
(Kinsman Road Extension)

Description: 0.6-mile water pipeline along SW Kinsman Rd. between SW Barber St. and Boeckman Rd.

Status: Complete

PLM_1.0 Wilsonville Area Pipeline Project
(Arrowhead Creek Park to SW Day Road)

Description: 3.3-mile water pipeline from Arrowhead Creek Park to intersection of SW Garden Acres Rd. at SW Day Rd.

Status: Phase 1: Complete; Phase 2: Complete; Phase 3: Construction

WTP_1.0 Willamette Water Supply System Water Treatment Plant
(Water Treatment Plant (WTP))

Description: 60-million gallons per day water treatment plant (WTP_1.0), including a finished water pump station (FPS_1.0) and a control system (DCS_1.0) located in Sherwood.

Status: Construction (WTP, FPS, DCS)

RWF_1.0 Raw Water Facilities Expansion
(Raw Water Facilities (RWF) Expansion)

Description: Expansion of the existing raw water pump station and intake at Arrowhead Creek Park in Wilsonville to 60 million gallons per day of initial capacity for the Willamette Water Supply System.

Status: Phase 1: Complete; Phase 1.5: Complete; Phase 2: Construction

The mid-Willamette River at Wilsonville is the supply source for the WWSS. The system consists of modifying the existing river intake and expanding pumping capacity, building more than 30 miles of drinking water pipeline, reservoir storage facilities on Cooper Mountain, and a new WTP in Sherwood.

For more information about the WWSP, visit www.ourreliablewater.org or call 503.941.4570.