

## Our Future Water Supply

The Willamette Water Supply System Commission (WWSS Commission) is an Oregon intergovernmental entity formed by Tualatin Valley Water District (TVWD), the City of Hillsboro, and the City of Beaverton. The WWSS Commission was formed to own, operate, manage and maintain the WWSS. TVWD has been designated the Managing Agency for the WWSS Commission, and TVWD operates the Willamette Water Supply Program (WWSP) to plan, design, and construct the WWSS. The WWSS will provide an additional resilient water supply for Washington County. When complete, the WWSS will be one of Oregon’s most seismically-resilient water systems—built to better withstand natural disasters, protect public health, and speed regional economic recovery through restoring critical services more quickly. The new system will be completed by 2026.

# Willamette Water Supply *Monthly Progress Report*

## *Our Reliable Water*

Month End **September 2024**

## Construction Progresses on the Willamette Water Supply System Water Treatment Plant (WTP\_1.0)



Construction of a new, seismically resilient water treatment plant (WTP) is essential to the WWSS. The project (WTP\_1.0) is located near the intersection of SW 124th Avenue and SW Tualatin-Sherwood Road. The site is within the Urban Growth Boundary and the City of Sherwood.

The new WTP will initially produce up to 60 million gallons of water per day (mgd), and is designed for expansion to a maximum of 120 mgd.

### WTP\_1.0 Construction Updates

Substantial progress is being made across multiple areas of the WTP construction site. Recent efforts have focused on several key areas, including:

- Concrete placement in several locations at the site
- Roof decking at the main chemical area
- Retaining wall installation
- Framing, drywall, and in-wall HVAC, plumbing, and electrical in the administration building

In addition, work in the near future will include:

- Placing concrete for the first floor of the finished water pump station and for the second floor of the dewatering building
- Hydrotesting the clearwell, which is a storage tank for filtered water
- Completing installation of 84-inch pipeline south of the equalization/overflow basins and beginning installation of other large-diameter pipeline



## Project of the Month

The WWSP is well underway with all projects currently in the construction phase or complete. The photos below highlight the Tualatin-Sherwood Area Pipeline Project (PLM\_4.0). Additional information on the project is available at <https://www.ourreliablewater.org/tualatin-sherwood-area-pipeline-project/>.



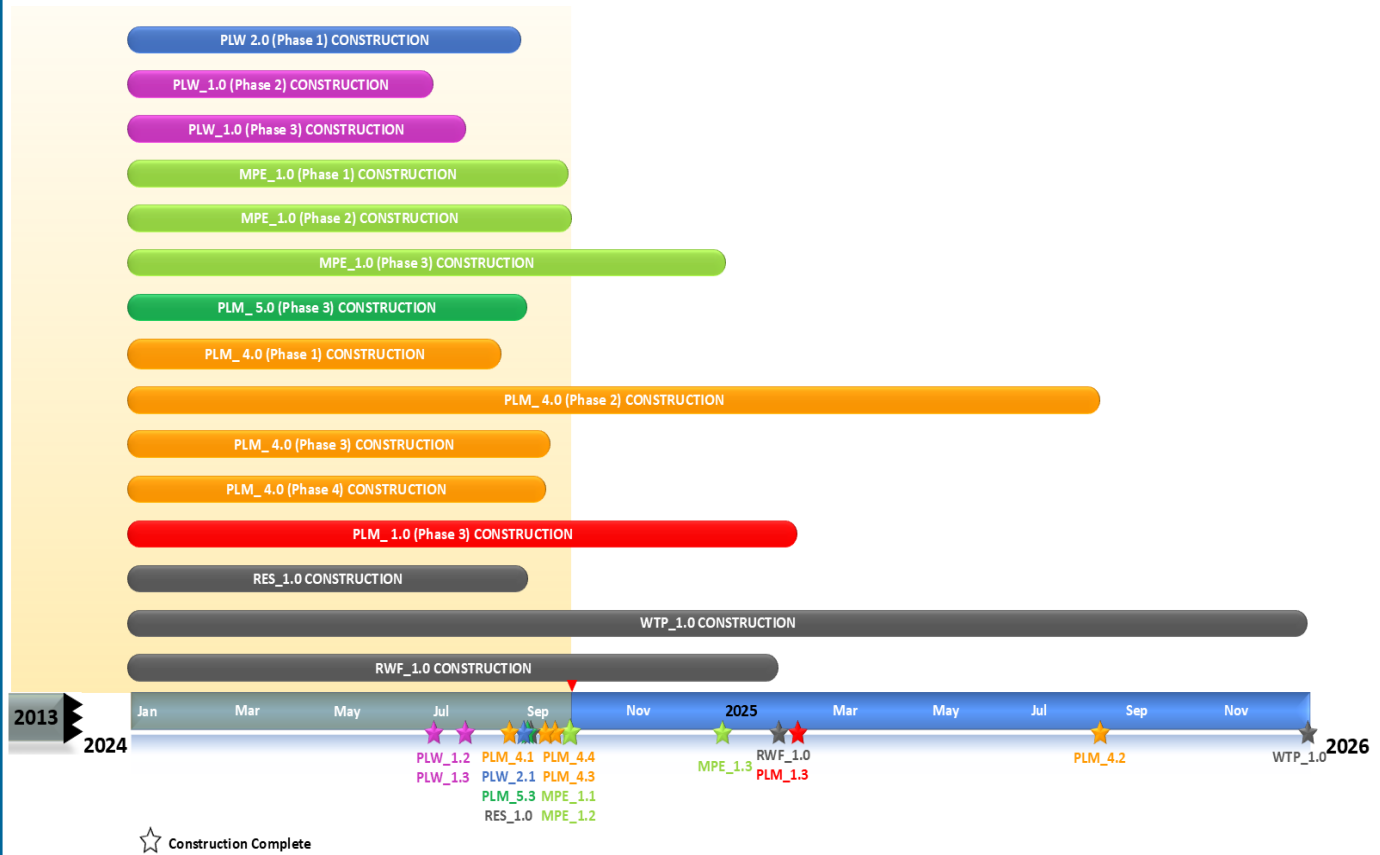
Bore pit at railroad tracks



Bore pit excavation

## Schedule Summary

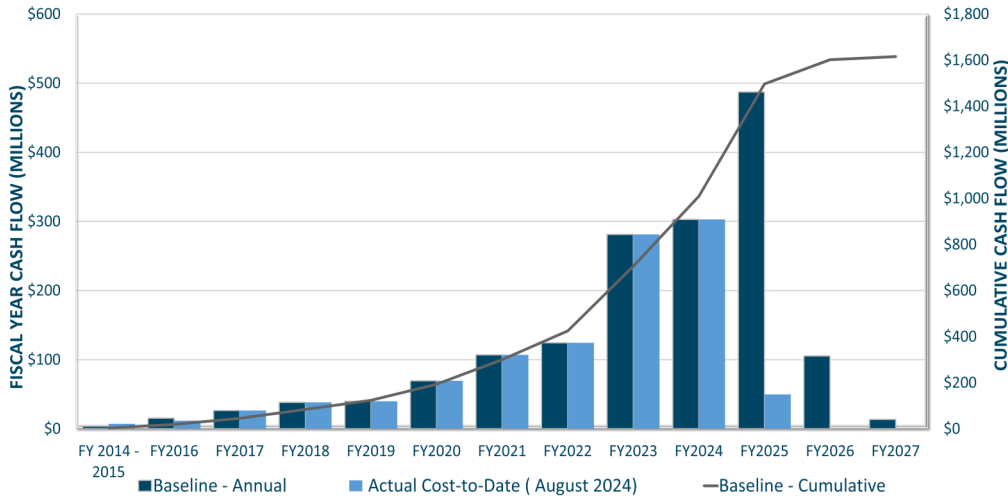
WWSP design and planning began in 2013; the Willamette Water Supply System is expected to be in service by July 2026. Below are the major milestones and activities forecasted from 2024 to 2026\*. The WWSP team is committed to on-time delivery. See page 4 for descriptions of the projects referenced below.



\*The actual duration of projects continues to be refined and is subject to change.

## Forecast Cost Summary

The graph below illustrates the projected WWSP cash flow by fiscal year (FY July 1 to June 30)\*. The cumulative cash flow establishes the budgeted \$1.6 billion, which accounts for actual and current projected costs, including projected escalation in the cost of labor, materials, and equipment required to build WWSP projects.



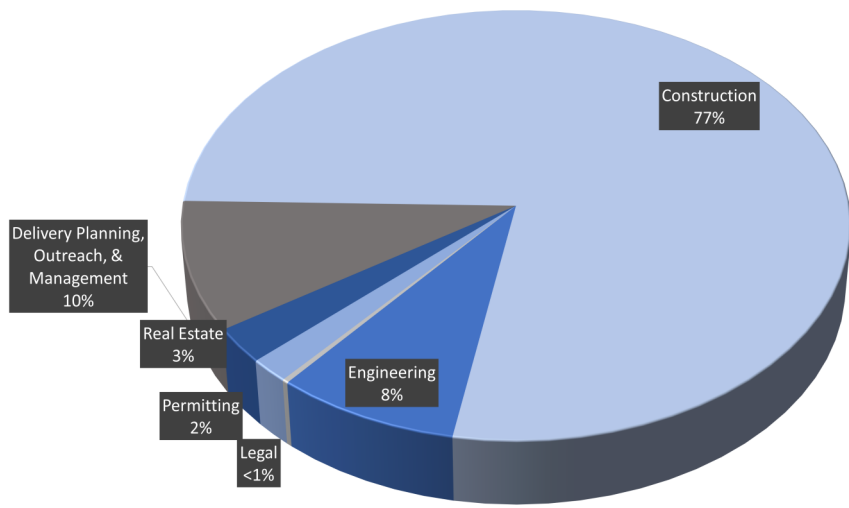
Costs to date for FY 2025 are \$49.8 million. Cumulative costs are projected to be \$1.4 billion through the end of FY 2025.

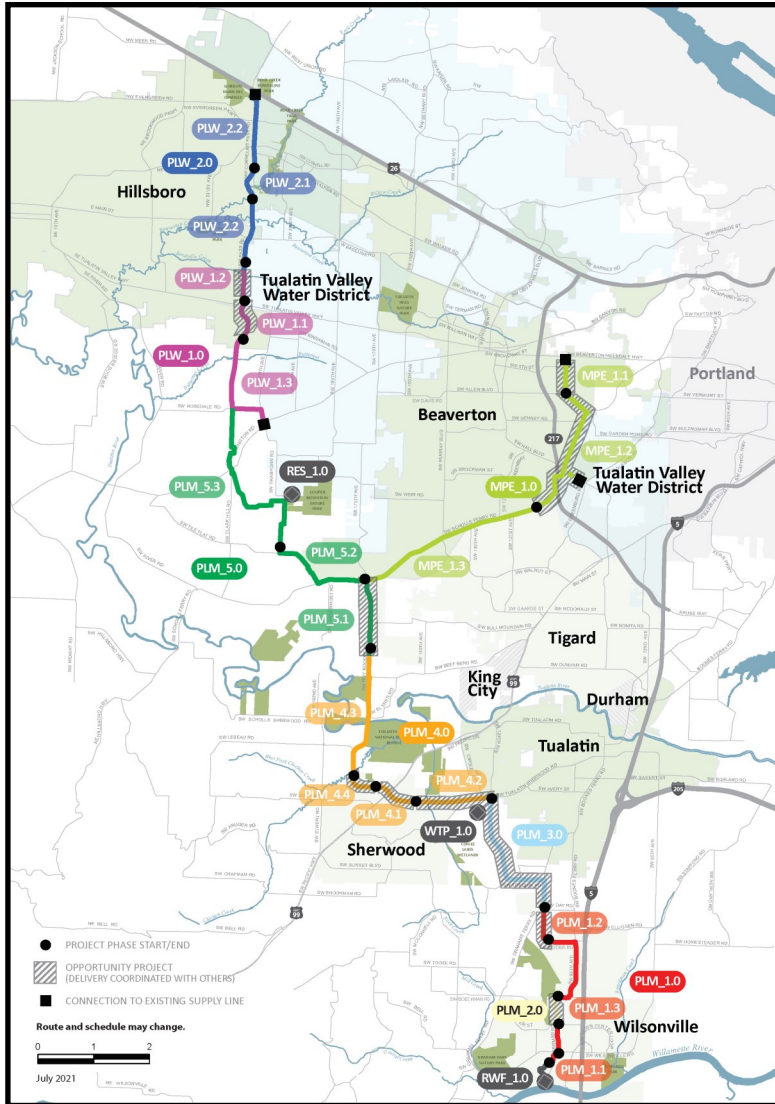
\*Current program forecast at completion may vary from baseline cumulative budget due to interim approved changes.

## Cumulative Cost Summary

WWSP cumulative costs are tracked and updated monthly. The chart below summarizes the distribution of cumulative costs through August 2024.

**Cumulative Water Supply Program costs to date are approximately \$1.059 billion, with the majority spent on planning, engineering, and construction.**





**PLW\_2.0 Cornelius Pass Rd Pipeline Project**  
(SE Frances St. to Highway 26)

*Description:* 3.3-mile water pipeline along NE Cornelius Pass Rd. from SE Frances St. to Hwy 26 with Phase 1 consisting of 0.7 miles of pipeline beginning at Orenco Woods Nature Park; connects to existing supply lines for City of Hillsboro and TVWD.

*Status:* Phase 1: Complete; Phase 2: Deferred

**PLW\_1.0 South Hillsboro Area Pipeline Project**  
(SW Farmington Road to Frances Street)

*Description:* 4-mile water pipeline from SW Farmington Rd. at SW 209th Ave. to NE Cornelius Pass Rd. at SE Frances St.

*Status:* Phase 1: Complete; Phase 2: Complete; Phase 3: Complete

**MPE\_1.0 Metzger Pipeline East Project**  
(SW Roy Rogers Road to Beaverton Hillsdale Hwy)

*Description:* 7.3-mile water pipeline to be built along SW Scholls Ferry Rd. between SW Roy Rogers Rd. and SW Allen Blvd.; connects to Metzger service area at SW Oleson Rd. and TVWD's system.

*Status:* Phase 1: Complete; Phase 2: Complete; Phase 3: Construction

**RES\_1.0 South Beaverton Area Water Storage Tanks** (Storage Tanks)

*Description:* One 15-million gallon storage tank located on Cooper Mountain.

*Status:* Complete

**PLM\_5.0 Scholls Ferry Rd Area Pipeline Project**  
(North of SW Beef Bend Road to SW Rosedale Road)

*Description:* 7-mile water pipeline from SW Roy Rogers Rd. 0.5-mile north of SW Beef Bend Rd. to SW Rosedale Rd.

*Status:* Phase 1: Complete; Phase 2: Complete; Phase 3: Complete

**PLM\_4.0 Tualatin-Sherwood Area Pipeline Project**  
(SW 124th Avenue to north of SW Beef Bend Road)

*Description:* 5.3-mile water pipeline from SW 124th Ave. at SW Tualatin-Sherwood Rd. along SW Roy Rogers Rd. to 0.5 miles north of SW Beef Bend Rd.

*Status:* Phase 1: Complete; Phase 2: Construction; Phase 3: Complete; Phase 4: Complete

**PLM\_3.0 124th Avenue Partnership Project**  
(SW 124th Avenue Extension)

*Description:* 2.7-mile water pipeline from SW Grahams Ferry Rd. at SW Day Rd. to SW 124th Ave. at SW Tualatin-Sherwood Rd.

*Status:* Complete

**PLM\_2.0 Kinsman Road Partnership Project**  
(Kinsman Road Extension)

*Description:* 0.6-mile water pipeline along SW Kinsman Rd. between SW Barber St. and Boeckman Rd.

*Status:* Complete

**PLM\_1.0 Wilsonville Area Pipeline Project**  
(Arrowhead Creek Park to SW Day Road)

*Description:* 3.3-mile water pipeline from Arrowhead Creek Park to intersection of SW Garden Acres Rd. at SW Day Rd.

*Status:* Phase 1: Complete; Phase 2: Complete; Phase 3: Construction

**WTP\_1.0 Willamette Water Supply System Water Treatment Plant**  
(Water Treatment Plant (WTP))

*Description:* 60-million gallons per day water treatment plant (WTP\_1.0), including a finished water pump station (FPS\_1.0) and a control system (DCS\_1.0) located in Sherwood.

*Status:* Construction (WTP, FPS, DCS)

**RWF\_1.0 Raw Water Facilities Expansion**  
(Raw Water Facilities (RWF) Expansion)

*Description:* Expansion of the existing raw water pump station and intake at Arrowhead Creek Park in Wilsonville to 60 million gallons per day of initial capacity for the Willamette Water Supply System.

*Status:* Phase 1: Complete; Phase 1.5: Complete; Phase 2: Construction

The mid-Willamette River at Wilsonville is the supply source for the WWSS. The system consists of modifying the existing river intake and expanding pumping capacity, building more than 30 miles of drinking water pipeline, reservoir storage facilities on Cooper Mountain, and a new WTP in Sherwood.

For more information about the WWSP, visit [www.ourreliablewater.org](http://www.ourreliablewater.org) or call 503.941.4570.