

Our Future Water Supply

The Willamette Water Supply System Commission (WWSS Commission) is an Oregon intergovernmental entity formed by Tualatin Valley Water District (TVWD), the City of Hillsboro, and the City of Beaverton. The WWSS Commission was formed to own, operate, manage and maintain the WWSS. TVWD has been designated the Managing Agency for the WWSS Commission, and TVWD operates the Willamette Water Supply Program (WWSP) to plan, design, and construct the WWSS. The WWSS will provide an additional resilient water supply for Washington County. When complete, the WWSS will be one of Oregon’s most seismically-resilient water systems—built to better withstand natural disasters, protect public health, and speed regional economic recovery through restoring critical services more quickly. The new system will be completed by 2026.

Willamette Water Supply

Our Reliable Water

Monthly Progress Report

Month End July 2024

The Cornelius Pass Road Pipeline Project Helps to Improve Orenco Woods Nature Park

The Cornelius Pass Road Pipeline Project (PLW_2.0) is a 3.3-mile water pipeline along NE Cornelius Pass Road. Phase 1 of the project (PLW_2.1) is a 0.7-mile section of pipeline from NE Quatama Street to north of NE Cherry Drive. Construction on PLW_2.1 began in early 2023 and is expected to end this fall. In the future, additional pipeline will be constructed from SE Frances Street to Highway 26, as part of Phase 2 of the project (PLW_2.2).



Installing shoring for drainage piping on access road north of NE Cherry Drive

This month, crews completed construction within Orenco Woods Nature Park (OWNP) and north of OWINP through the former rail corridor to Cornelius Pass Road. About 900 feet of pipeline has been constructed beneath the eastern edge of OWINP. Park trails, sidewalks, and bike lanes are a few features that have been improved by PLW_2.0.

Trails are Open at Orenco Woods Nature Park!

- **Rock Creek Trail is now open!** WWSP worked with OWINP owners to improve the trail to increase public access during high-water events and protect habitat for fish and wildlife. Some landscaping activity in the park will continue into the fall.
- **Sidewalks and bike lanes are now open, including a new bike ramp.** Detour routes are no longer in effect. A new bike ramp was installed, improving access to the trails.
- **The small parking lot near Cornelius Pass Road has reopened.** The lot, which was closed for 12 months, has been restored, paved, and restriped.
- **Final restoration planting will be done this fall during the rainy season.** Some erosion control measures will remain in place until this restoration is finished.
- **The final Wildlife Management Plan stakeholder meeting will be held this fall.** This public meeting will take place after all restoration is complete.



Installing expansion joint filler on new concrete trail in OWINP

Project of the Month

The WWSP is well underway with all projects currently in the construction phase or complete. The photos below highlight the Wilsonville Area Pipeline Project (PLM_1.3). Additional information on the project is available at <https://www.ourreliablewater.org/wilsonville-area-pipeline-project/>.



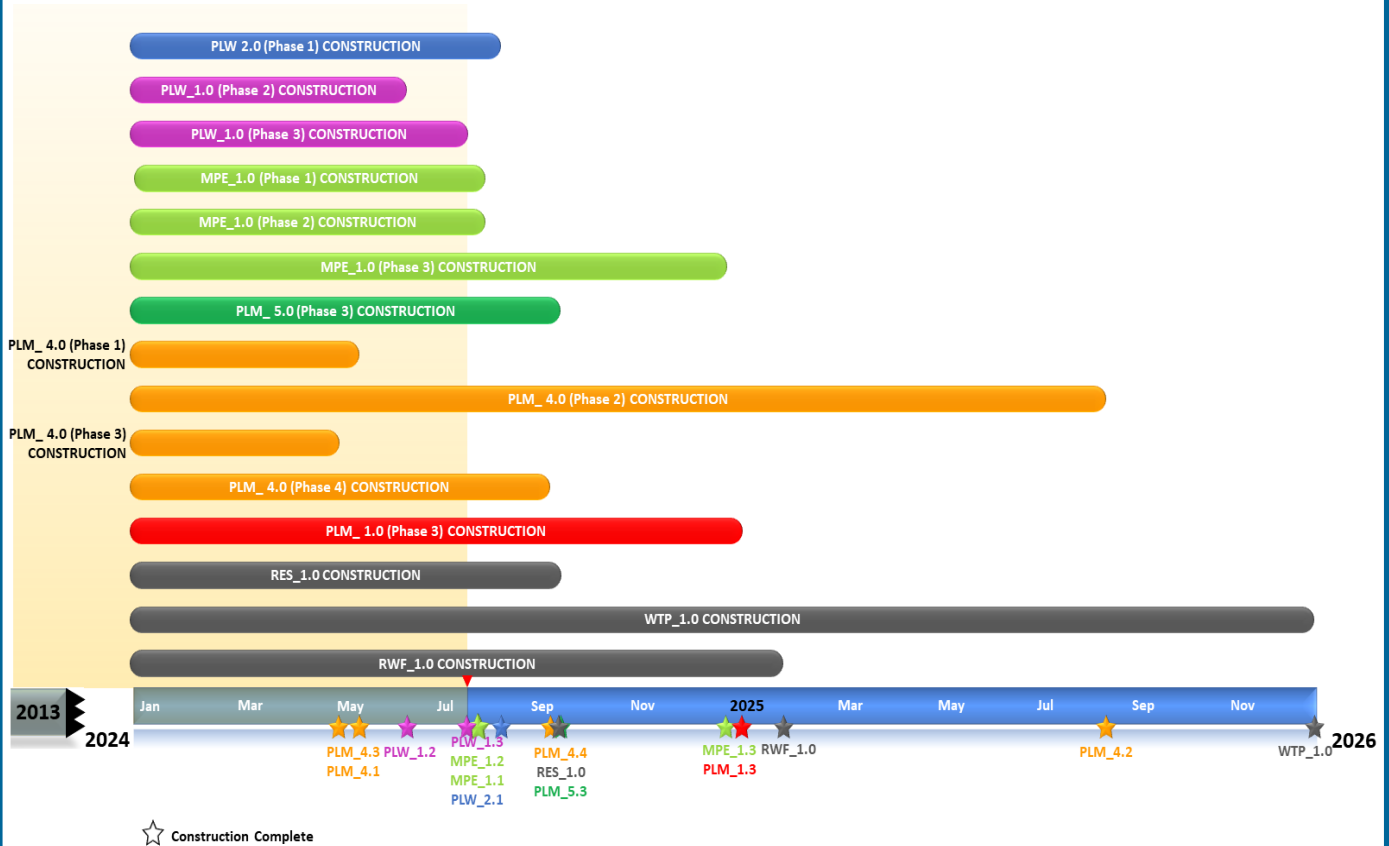
Adding water to the crushed rock



Crew rigging up the pipe for installation in the trench

Schedule Summary

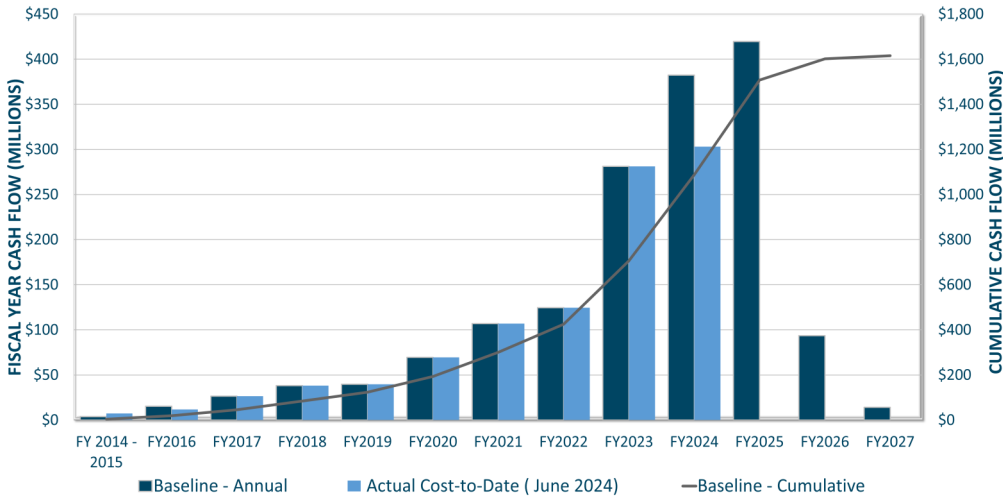
WWSP design and planning began in 2013; the Willamette Water Supply System is expected to be in service by July 2026. Below are the major milestones and activities forecasted from 2024 to 2026*. The WWSP team is committed to on-time delivery. See page 4 for descriptions of the projects referenced below.



*The actual duration of projects continues to be refined and is subject to change.

Forecast Cost Summary

The graph below illustrates the projected WWSP cash flow by fiscal year (FY July 1 to June 30)*. The cumulative cash flow establishes the budgeted \$1.6 billion, which accounts for actual and current projected costs, including projected escalation in the cost of labor, materials, and equipment required to build WWSP projects.



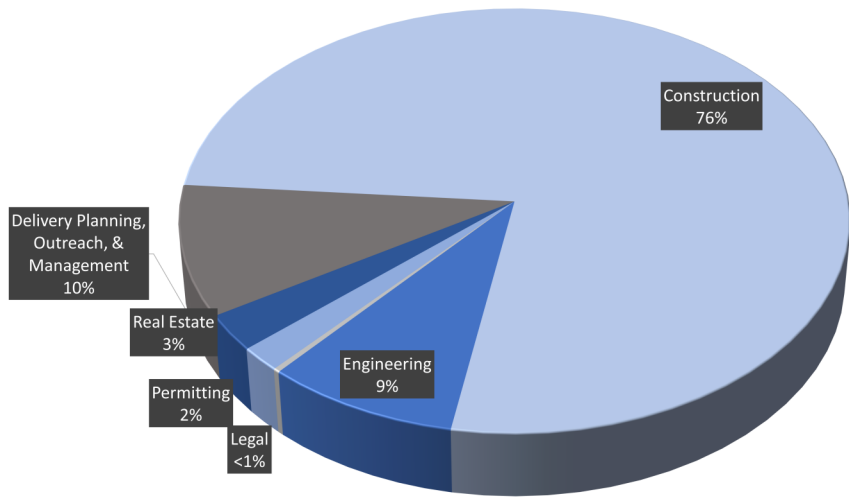
Costs to date for FY 2024 are \$303 million. Cumulative costs are projected to be \$1.0 billion through the end of FY 2024.

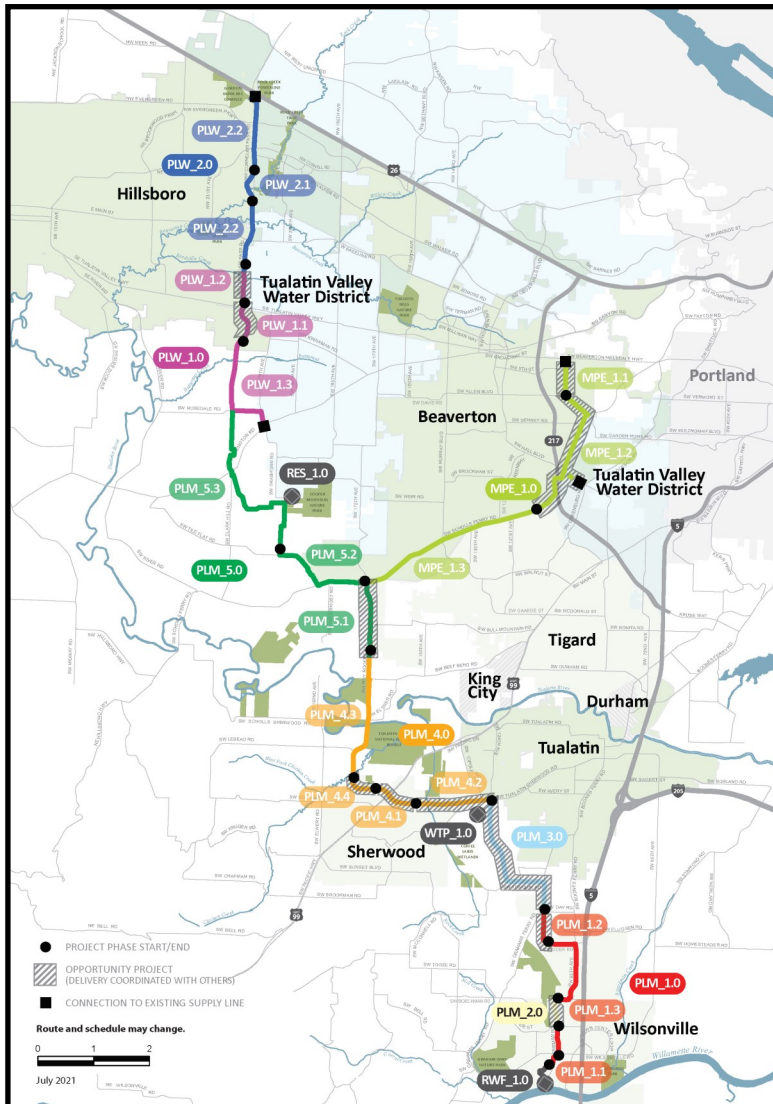
*Current program forecast at completion may vary from baseline cumulative budget due to interim approved changes.

Cumulative Cost Summary

WWSP cumulative costs are tracked and updated monthly. The chart below summarizes the distribution of cumulative costs through June 2024.

Cumulative Water Supply Program costs to date are approximately \$1.009 billion, with the majority spent on planning, engineering, and construction.





PLW_2.0 Cornelius Pass Pipeline Project
(SE Frances St. to Highway 26)

Description: 3.3-mile water pipeline along NE Cornelius Pass Rd. from SE Frances St. to Hwy 26 with Phase 1 consisting of 0.7 miles of pipeline beginning at Orenco Woods Nature Park; connects to existing supply lines for City of Hillsboro and TVWD.

Status: Phase 1: Construction; Phase 2: Deferred

PLW_1.0 South Hillsboro Area Pipeline Project
(SW Farmington Road to Frances Street)

Description: 4-mile water pipeline from SW Farmington Rd. at SW 209th Ave. to NE Cornelius Pass Rd. at SE Frances St.

Status: Phase 1: Complete; Phase 2: Complete; Phase 3: Construction

MPE_1.0 Metzger Pipeline East Project
(SW Roy Rogers Road to Beaverton Hillsdale Hwy)

Description: 7.3-mile water pipeline to be built along SW Scholls Ferry Rd. between SW Roy Rogers Rd. and SW Allen Blvd.; connects to Metzger service area at SW Oleson Rd. and TVWD's system.

Status: Phase 1: Construction; Phase 2: Complete; Phase 3: Construction

RES_1.0 South Beaverton Area Water Storage Tanks (Storage Tanks)

Description: One 15-million gallon storage tank located on Cooper Mountain.

Status: Construction

PLM_5.0 Scholls Area Pipeline Project
(North of SW Beef Bend Road to SW Rosedale Road)

Description: 7-mile water pipeline from SW Roy Rogers Rd. 0.5-mile north of SW Beef Bend Rd. to SW Rosedale Rd.

Status: Phase 1: Complete; Phase 2: Complete; Phase 3: Construction

PLM_4.0 Tualatin-Sherwood Area Pipeline Project
(SW 124th Avenue to north of SW Beef Bend Road)

Description: 5.3-mile water pipeline from SW 124th Ave. at SW Tualatin-Sherwood Rd. along SW Roy Rogers Rd. to 0.5 miles north of SW Beef Bend Rd.

Status: Phase 1: Construction; Phase 2: Construction; Phase 3: Construction; Phase 4: Construction

PLM_3.0 124th Avenue Partnership Project
(SW 124th Avenue Extension)

Description: 2.7-mile water pipeline from SW Grahams Ferry Rd. at SW Day Rd. to SW 124th Ave. at SW Tualatin-Sherwood Rd.

Status: Complete

PLM_2.0 Kinsman Road Partnership Project
(Kinsman Road Extension)

Description: 0.6-mile water pipeline along SW Kinsman Rd. between SW Barber St. and Boeckman Rd.

Status: Complete

PLM_1.0 Wilsonville Area Pipeline Project
(Arrowhead Creek Park to SW Day Road)

Description: 3.3-mile water pipeline from Arrowhead Creek Park to intersection of SW Garden Acres Rd. at SW Day Rd.

Status: Phase 1: Complete; Phase 2: Complete; Phase 3: Construction

WTP_1.0 Willamette Water Supply System Water Treatment Plant
(Water Treatment Plant (WTP))

Description: 60-million gallons per day water treatment plant (WTP_1.0), including a finished water pump station (FPS_1.0) and a control system (DCS_1.0) located in Sherwood.

Status: Construction (WTP, FPS, DCS)

RWF_1.0 Raw Water Facilities Expansion
(Raw Water Facilities (RWF) Expansion)

Description: Expansion of the existing raw water pump station and intake at Arrowhead Creek Park in Wilsonville to 60 million gallons per day of initial capacity for the Willamette Water Supply System.

Status: Phase 1: Complete; Phase 1.5: Complete; Phase 2: Construction

The mid-Willamette River at Wilsonville is the supply source for the WWSS. The system consists of modifying the existing river intake and expanding pumping capacity, building more than 30 miles of drinking water pipeline, reservoir storage facilities on Cooper Mountain, and a new WTP in Sherwood.

For more information about the WWSP, visit www.ourreliablewater.org or call 503.941.4570.