

Our Future Water Supply

The Willamette Water Supply System Commission (WWSS Commission) is an Oregon intergovernmental entity formed by Tualatin Valley Water District (TVWD), the City of Hillsboro, and the City of Beaverton. The WWSS Commission was formed to own, operate, manage and maintain the WWSS. TVWD has been designated the Managing Agency for the WWSS Commission, and TVWD operates the Willamette Water Supply Program (WWSP) to plan, design, and construct the WWSS. The WWSS will provide an additional resilient water supply for Washington County. When complete, the WWSS will be one of Oregon’s most seismically-resilient water systems—built to better withstand natural disasters, protect public health, and speed regional economic recovery through restoring critical services more quickly. The new system will be completed by 2026.

Willamette Water Supply

Our Reliable Water

Monthly Progress Report

Month End June 2024

Construction Continues at the Raw Water Facilities Expansion (RWF_1.0) Project

In coordination with the City of Wilsonville, the WWSP team began building improvements in and around the Arrowhead Creek Park in 2020. These improvements include:



Surge control tanks

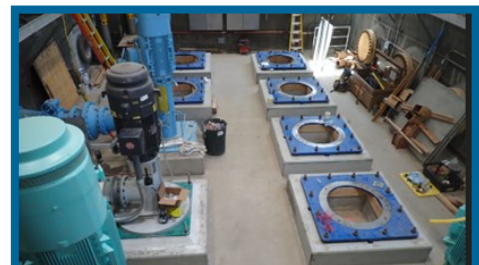
- An improved pump station that will supply water to the new WWSS
- Reinforcement of the Willamette River’s bank to preserve its structure and help maintain operations after a natural disaster, such as an earthquake
- New fish screens that will allow additional water to be withdrawn from the Willamette River
- A new electrical building to provide power, so water can be pumped to the WWSS Water Treatment Plant in Sherwood
- A new raw water pipeline, which was constructed through Arrowhead Creek Park to connect to the new WWSS

June 2024 Progress and Planned Work

- The exterior of the new electrical building is complete; crews are now working on the inside of the building
- The perimeter fence and gate were completed recently
- A new screen has been installed in the Raw Water Pump Station building to increase air flow
- Pump baseplates and headers are complete, and pumps are being tested at the factory prior to delivery to the site
- Electricians are installing conduits, pulling wiring, and installing a fire alarm and security system
- Portland General Electric is continuing to bring permanent power to the site
- Crews will remove and repave the asphalt for the Morey’s Lane bike path this month
- Landscapers will restore and add plants along the perimeter fence and pathway adjacent to Arrowhead Creek
- Work will begin on the replacement of Arrowhead Creek Lane curb and gutter



Upper site electrical building



Vertical turbine pump sole plates

Project of the Month

The WWSP is well underway with all projects currently in the construction phase or complete. The photos below highlight the WWSS Cornelius Pass Road Pipeline (PLW_2.1) Project. Additional information on the project is available at <https://www.ourreliablewater.org/orengo-woods-nature-park/>.



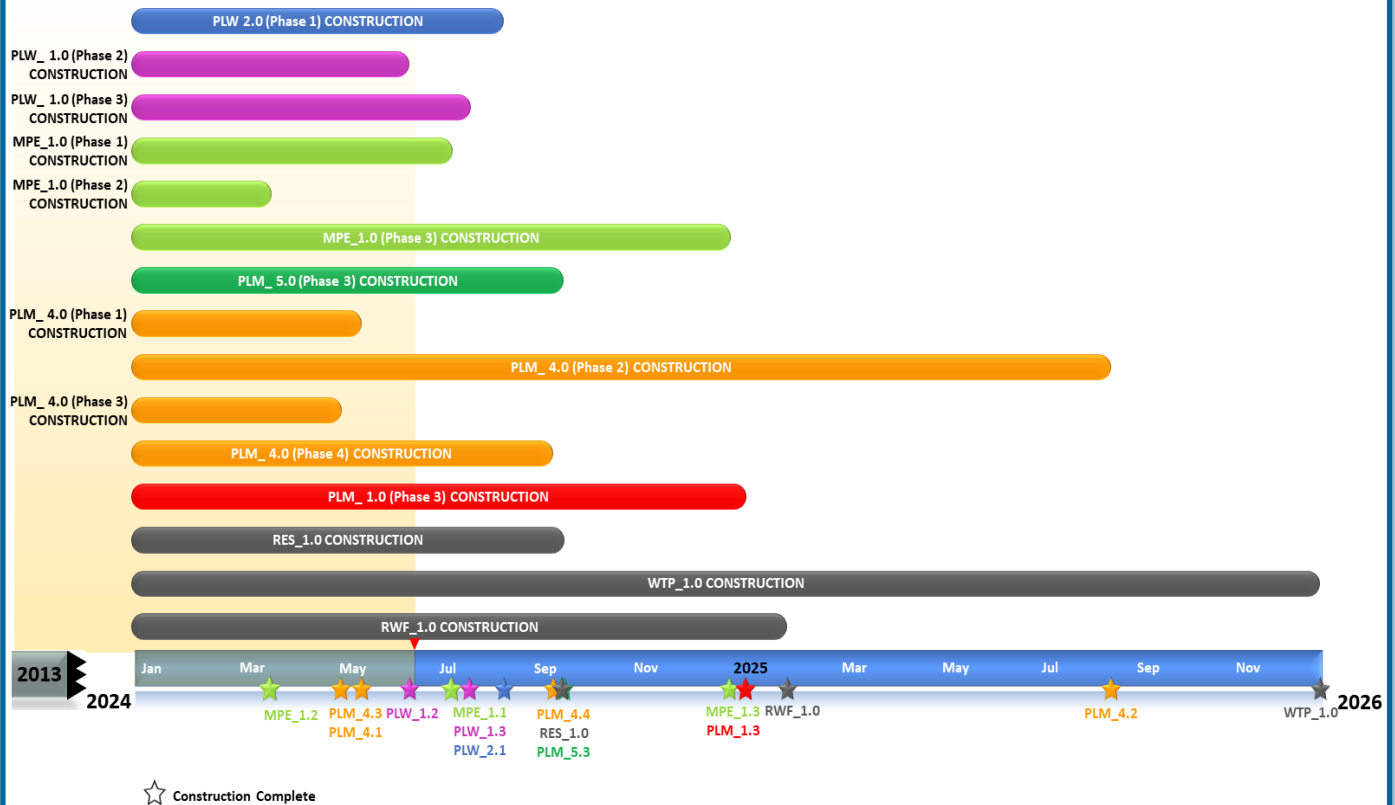
Jute matting installation at a drainage swale in Orenco Woods Nature Park



Placing drain rock at the edge of a sidewalk alignment

Schedule Summary

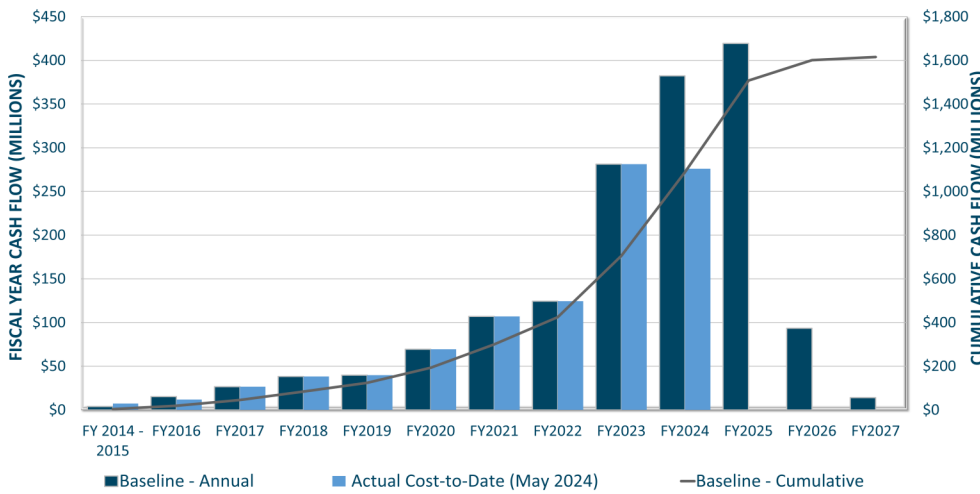
WWSP design and planning began in 2013; the Willamette Water Supply System is expected to be in service by July 2026. Below are the major milestones and activities forecasted from 2024 to 2026*. The WWSP team is committed to on-time delivery. See page 4 for descriptions of the projects referenced below.



*The actual duration of projects continues to be refined and is subject to change.

Forecast Cost Summary

The graph below illustrates the projected WWSP cash flow by fiscal year (FY July 1 to June 30)*. The cumulative cash flow establishes the budgeted \$1.6 billion, which accounts for actual and current projected costs, including projected escalation in the cost of labor, materials, and equipment required to build WWSP projects.



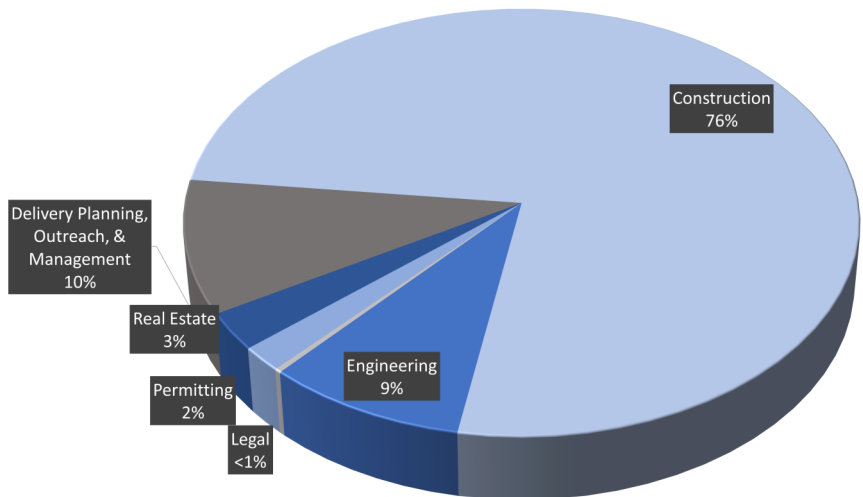
Costs to date for FY 2024 are \$276 million. Cumulative costs are projected to be \$1.0 billion through the end of FY 2024.

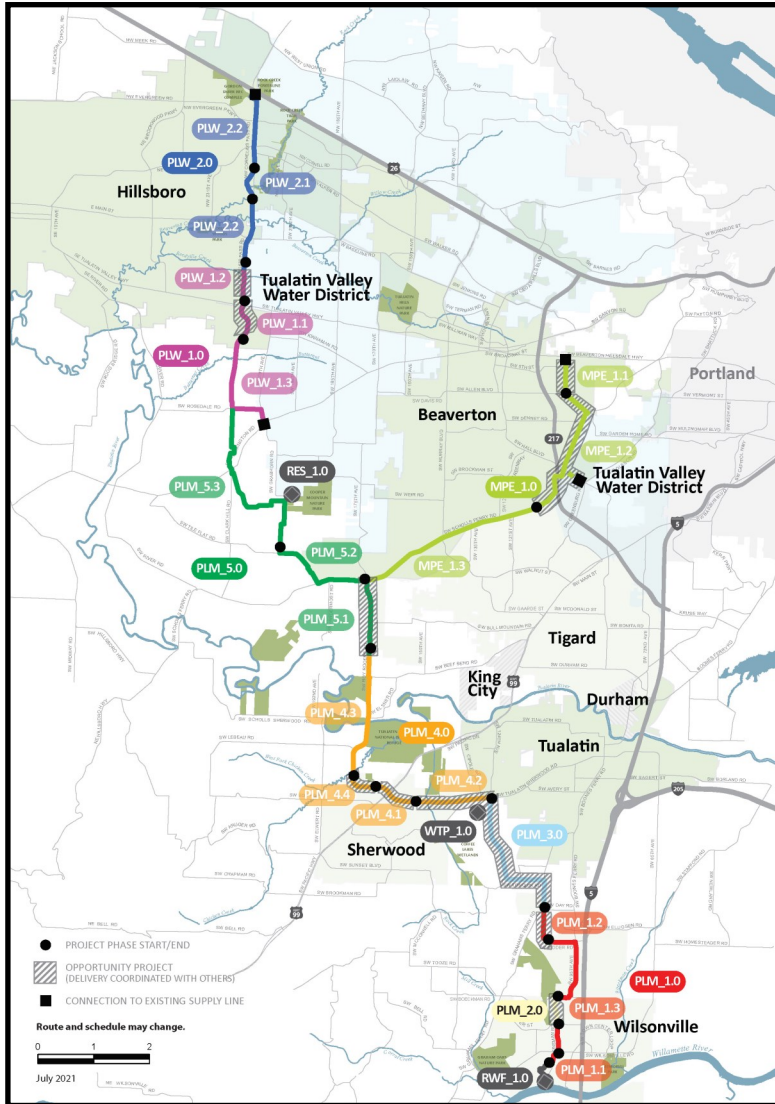
*Current program forecast at completion may vary from baseline cumulative budget due to interim approved changes.

Cumulative Cost Summary

WWSP cumulative costs are tracked and updated monthly. The chart below summarizes the distribution of cumulative costs through May 2024.

Cumulative Water Supply Program costs to date are approximately \$981.9 million, with the majority spent on planning, engineering, and construction.





PLW_2.0 Cornelius Pass Pipeline Project
(Frances Road to Highway 26)

Description: 3.3-mile water pipeline along NE Cornelius Pass Rd. from Frances St. to Hwy 26 with Phase 1 consisting of 0.7 miles of pipeline beginning at Orenco Woods Nature Park; connects to existing supply lines for City of Hillsboro and TVWD.

Status: Phase 1: Construction; Phase 2: Deferred

PLW_1.0 South Hillsboro Area Pipeline Project
(SW Farmington Road to Frances Street)

Description: 4-mile water pipeline from SW Farmington Rd. at SW 209th Ave. to NE Cornelius Pass Rd. at Frances St.

Status: Phase 1: Complete; Phase 2: Complete; Phase 3: Construction

MPE_1.0 Metzger Pipeline East Project
(SW Roy Rogers Road to Beaverton Hillsdale Hwy)

Description: 7.3-mile water pipeline to be built along SW Scholls Ferry Rd. between SW Roy Rogers Rd. and Allen Blvd.; connects to Metzger service area at SW Oleson Rd. and TVWD's system.

Status: Phase 1: Construction; Phase 2: Complete; Phase 3: Construction

RES_1.0 South Beaverton Area Water Storage Tanks (Storage Tanks)

Description: One 15-million gallon storage tank located on Cooper Mountain.

Status: Construction

PLM_5.0 Scholls Area Pipeline Project
(North of SW Beef Bend Road to SW Rosedale Road)

Description: 7-mile water pipeline from SW Roy Rogers Rd. 0.5-mile north of SW Beef Bend Rd. to SW Rosedale Rd.

Status: Phase 1: Complete; Phase 2: Complete; Phase 3: Construction

PLM_4.0 Tualatin-Sherwood Area Pipeline Project
(SW 124th Avenue to north of SW Beef Bend Road)

Description: 5.3-mile water pipeline from SW 124th Ave. at SW Tualatin-Sherwood Rd. along SW Roy Rogers Rd. to 0.5 miles north of SW Beef Bend Rd.

Status: Phase 1: Construction; Phase 2: Construction; Phase 3: Construction; Phase 4: Construction

PLM_3.0 124th Avenue Partnership Project
(SW 124th Avenue Extension)

Description: 2.7-mile water pipeline from Grahams Ferry Rd. at Day Rd. to 124th Ave. at SW Tualatin-Sherwood Rd.

Status: Complete

PLM_2.0 Kinsman Road Partnership Project
(Kinsman Road Extension)

Description: 0.6-mile water pipeline along Kinsman Rd. between Barber St. and Boeckman Rd.

Status: Complete

PLM_1.0 Wilsonville Area Pipeline Project
(Arrowhead Creek Park to Day Road)

Description: 3.3-mile water pipeline from Arrowhead Creek Park to intersection of SW Garden Acres Rd. at Day Rd.

Status: Phase 1: Complete; Phase 2: Complete; Phase 3: Construction

WTP_1.0 Willamette Water Supply System Water Treatment Plant
(Water Treatment Plant (WTP))

Description: 60-million gallons per day water treatment plant (WTP_1.0), including a finished water pump station (FPS_1.0) and a control system (DCS_1.0) located in Sherwood.

Status: Construction (WTP, FPS, DCS)

RWF_1.0 Raw Water Facilities Expansion
(Raw Water Facilities (RWF) Expansion)

Description: Expansion of the existing raw water pump station and intake at Arrowhead Creek Park in Wilsonville to 60 million gallons per day of initial capacity for the Willamette Water Supply System.

Status: Phase 1: Complete; Phase 1.5: Complete; Phase 2: Construction

The mid-Willamette River at Wilsonville is the supply source for the WWSS. The system consists of modifying the existing river intake and expanding pumping capacity, building more than 30 miles of drinking water pipeline, reservoir storage facilities on Cooper Mountain, and a new WTP in Sherwood.

For more information about the WWSP, visit www.ourreliablewater.org or call 503.941.4570.