

Willamette Water Supply

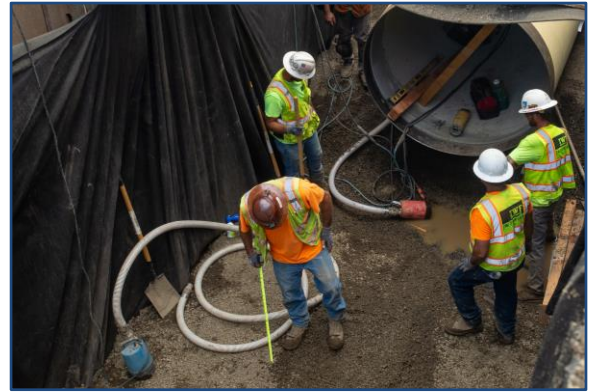
Our Reliable Water Future

Pipeline and Water Storage Tanks Construction

Construction began in March 2022 on the Scholls Ferry Road Area Pipeline Project (PLM_5.3) and the South Beaverton Area Water Storage Tanks (RES_1.0). The Hoffman Fowler Construction Manager/General Contractor team leads the joint construction project. Construction is coordinated to reduce impacts on nearby neighbors and the traveling public. Construction completion is anticipated to be early 2025.

Scholls Ferry Road Area Pipeline Project (PLM_5.3)

Consisting of approximately 20,000 linear feet of 66-inch diameter, welded steel pipe, the alignment begins near the intersection of SW Tile Flat and SW Grabhorn Roads where it connects to the PLM_5.2 pipeline. The pipeline alignment then follows Grabhorn Road to the water storage tank site at the SW Grabhorn and SW Stonecreek Drive intersection and continues west on private property until it reaches the existing Bonneville Power Administration (BPA) corridor, where it moves north following the BPA corridor to SW Farmington Road. North of Farmington Road, the pipeline alignment extends north through private property, connecting to the South Hillsboro Pipeline Project (PLW_1.0).



This pipeline segment is approximately 3.75 miles.

South Beaverton Area Water Storage Tanks (RES_1.0)

Two 15-million-gallon water storage tanks will be built near the SW Grabhorn Road and SW Stonecreek Drive intersection. Construction of the easternmost water storage tank is being done in coordination with the PLM_5.3 project. The westerly water tank construction has been deferred to approximately 2035.



Each storage tank will hold 15 million gallons of water.

Our Future Water Supply

The WWSP is a partnership between Tualatin Valley Water District, the City of Hillsboro and the City of Beaverton to develop the mid-Willamette River at Wilsonville as an additional water supply source and will be paid for by those ratepayers. This new system, when operational in 2026, will provide a reliable water supply for the region while also helping water system operators balance supply during times of drought or other supply interruptions, and recover more quickly after a large natural disaster.

Learn More

OurReliableWater.org
503-941-4570
info@ourreliablewater.org

