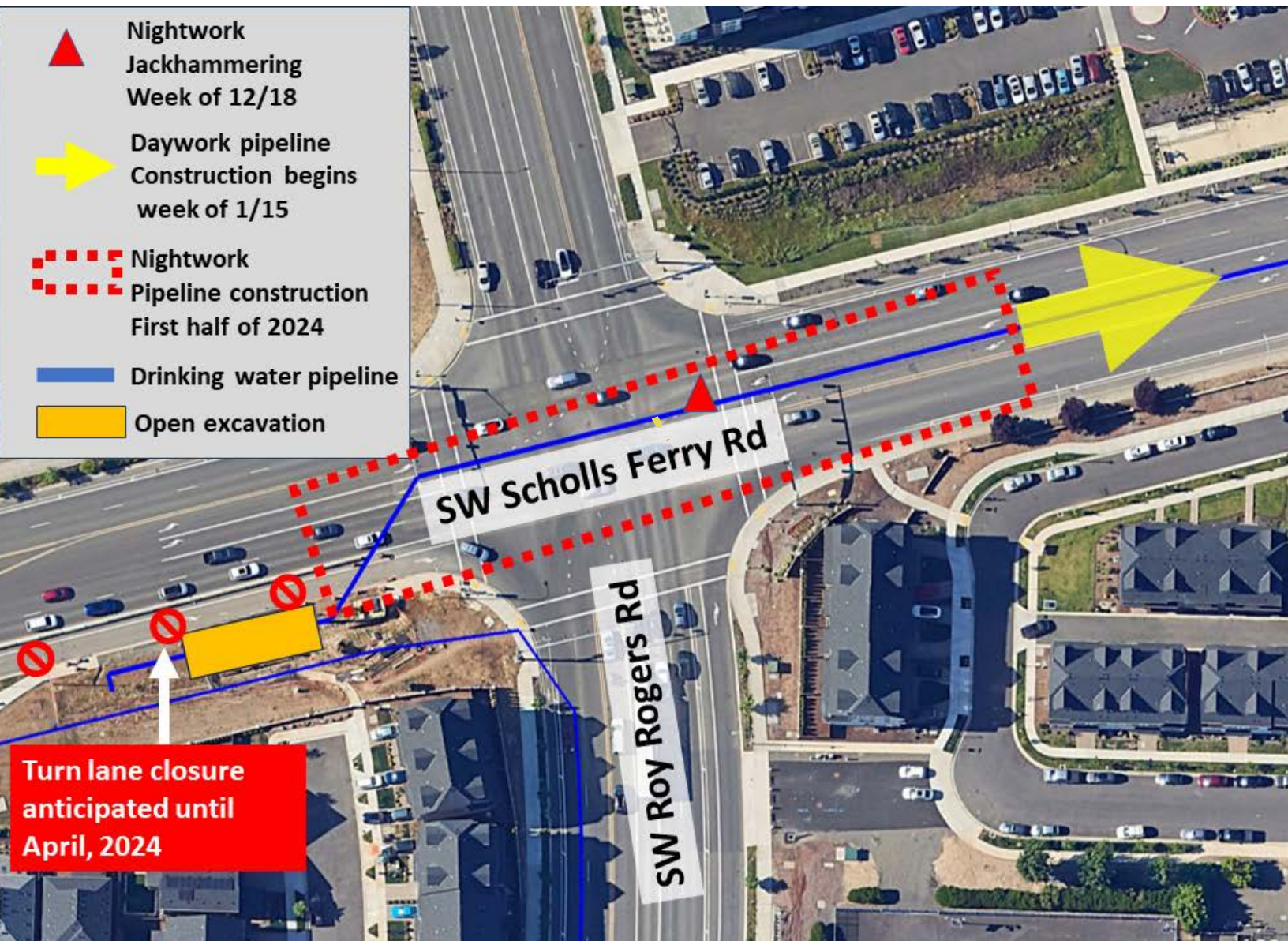


# SW Scholls Ferry Road Pipeline Installation Continues Near SW Roy Rogers Road - Nightwork Jackhammering Planned

Work around the intersection of SW Roy Rogers Road and SW Scholls Ferry Road continues as crews intermittently perform both nightwork and daywork in the area. Nightwork jackhammering is planned the week of 12/18 due to the team encountering heavy rock underground. Work hours are 8 p.m. to 5 a.m. Monday through Friday.

## Expect Regular Nightwork

Due to the high traffic counts in the area, nightwork is necessary. **Night work reduces the duration of construction, reduces traffic impacts and has less of an impact on local businesses.** What could be finished in two months of work at night could take up to a year to perform during the day. Nightwork setup is easier, safer to set up barricades and less time consuming. Crews can receive deliveries and operate equipment more efficiently, and the team spends more time getting the job done so we can restore the road back to normal more quickly. We're working hard to minimize the noise generated during the nighttime hours. Those fronting Scholls Ferry Road can expect vibration resulting from construction when activities are nearby. This night work is an important element in our project to install seismically resilient drinking water pipelines to protect customers' water supply.



**Willamette Water Supply**  
*Our Reliable Water Future*

### Learn More:

503-941-4570  
info@ourreliablewater.org  
www.OurReliableWater.org/mpe  
City of Beaverton 1610 am radio

# Heads Up!

## SW Scholls Ferry Road Pipeline Installation Continues Near SW Roy Rogers Road - Nightwork Jackhammering Planned [Map and additional information inside](#)

**The Willamette Water Supply System (WWSS) MPE\_1.0** project is a partnership between the Tualatin Valley Water District (TVWD), City of Hillsboro, and City of Beaverton to build a new seismically resilient drinking water system by 2026. The project combines planned improvements by TVWD with WWSS and the City of Beaverton water construction projects. The combined project maximizes cost-effectiveness and reduces community and environmental construction impacts. Those living, traveling, working, and shopping along portions of SW Scholls Ferry Road, SW Hall Boulevard, SW Cascade Avenue, SW Allen Boulevard and Western Avenue can expect various construction activities from the fall of 2021 until the fall of 2024.

**Willamette Water Supply**  
*Our Reliable Water Future*

Visit: [www.ourreliablewater.org/mpe](http://www.ourreliablewater.org/mpe) or call 503-941-4570.

