

## Our Future Water Supply

The Willamette Water Supply System Commission (WWSS Commission) is an Oregon intergovernmental entity formed by Tualatin Valley Water District (TVWD), the City of Hillsboro, and the City of Beaverton. The WWSS Commission was formed to build the Willamette Water Supply System (WWSS) in response to planned growth in their service areas. TVWD has been designated the Managing Agency for the WWSS Commission, and TVWD operates the Willamette Water Supply Program (WWSP) to plan, design, and construct the WWSS. The WWSS will provide an additional resilient water supply for Washington County. When complete, the WWSS will be one of Oregon’s most seismically-resilient water systems—built to better withstand natural disasters, protect public health, and speed regional economic recovery through restoring critical services more quickly. The new system will be completed by 2026.

# Willamette Water Supply *Monthly Progress Report*

## Our Reliable Water

Month End **October 2022**

### WWSS Permitting and Compliance

Nearly 500 individual permits and approvals from 28 different agencies and jurisdictions are needed to construct the Willamette Water Supply System (WWSS). Each of these approvals and permits includes conditions that govern construction of the WWSS and help avoid, minimize, and mitigate impacts to the environment.

To help facilitate successful issuance of permits and approvals, Willamette Water Supply Program (WWSP) member agencies began meeting with regulatory agencies and stakeholders early in the preliminary design phase of the WWSP in 2013. The goal of these meetings was to familiarize resource agencies and stakeholders with the program, listen to concerns and suggestions, and solicit input towards developing an effective approach to on-time permit acquisition.

Permit acquisition began with permits that apply to the WWSS as a whole. These “system-wide” permits can involve a lengthy review period by regulatory agencies. Applications for these permits were based on preliminary design of the WWSS. The original permits were issued in 2018 and 2019.

Other permits required to construct the WWSS are more project-specific and are sought prior to or at the start of the construction phase of each project. To date, over 400 permits and approvals have been acquired. Permit acquisition will continue through 2023 and into 2024.

After permits are obtained, the WWSP permitting team supports compliance by monitoring construction and verifying that permit conditions and other regulatory requirements are met. Some projects will require long-term monitoring after construction to document success of on-site restoration and identify maintenance needs, if any. Project-specific monitoring plans are being prepared for each project with long-term monitoring requirements.

### Major WWSS Permitting Milestones

- 2014** | WWSP Member Agencies begin Meeting with Resource Agencies and Stakeholders
- July 2018** | Service Provider Letter (SPL) Issued by Clean Water Services
- October 2018** | National Marine Fisheries Service (Endangered Species Act Section 7) Approval Obtained & Oregon Department of Environmental Quality (CWA Section 401) Approval Obtained
- November 2018** | Oregon State Historic Preservation Office (National Historic Preservation Act Section 106) Approval Obtained
- December 2018** | Clean Water Act 404 Permit Issued by U.S. Army Corps of Engineers (USACE)
- May 2019** | Removal/Fill Permit Issued by Oregon Department of State Lands (DSL)
- 2019-2024** | Application and Review Process for Local Land Use Permits for Individual Project Segments (including for temporary facilities for commissioning)
- 2019-2024** | Application and Review Process for Construction Permits for Individual Project Segments
- 2019-2026 & Beyond** | Post-Construction Activities to Demonstrate Compliance with Permit Conditions

## Project of the Month

The WWSP is well underway with many projects currently in the construction phase and the remaining projects completed. The photos below highlight the progress on the Tualatin Sherwood Area Pipeline Project (PLM\_4.0). Additional information on the project is available at <https://www.ourreliablewater.org/tualatin-sherwood-area-pipeline-project/>.



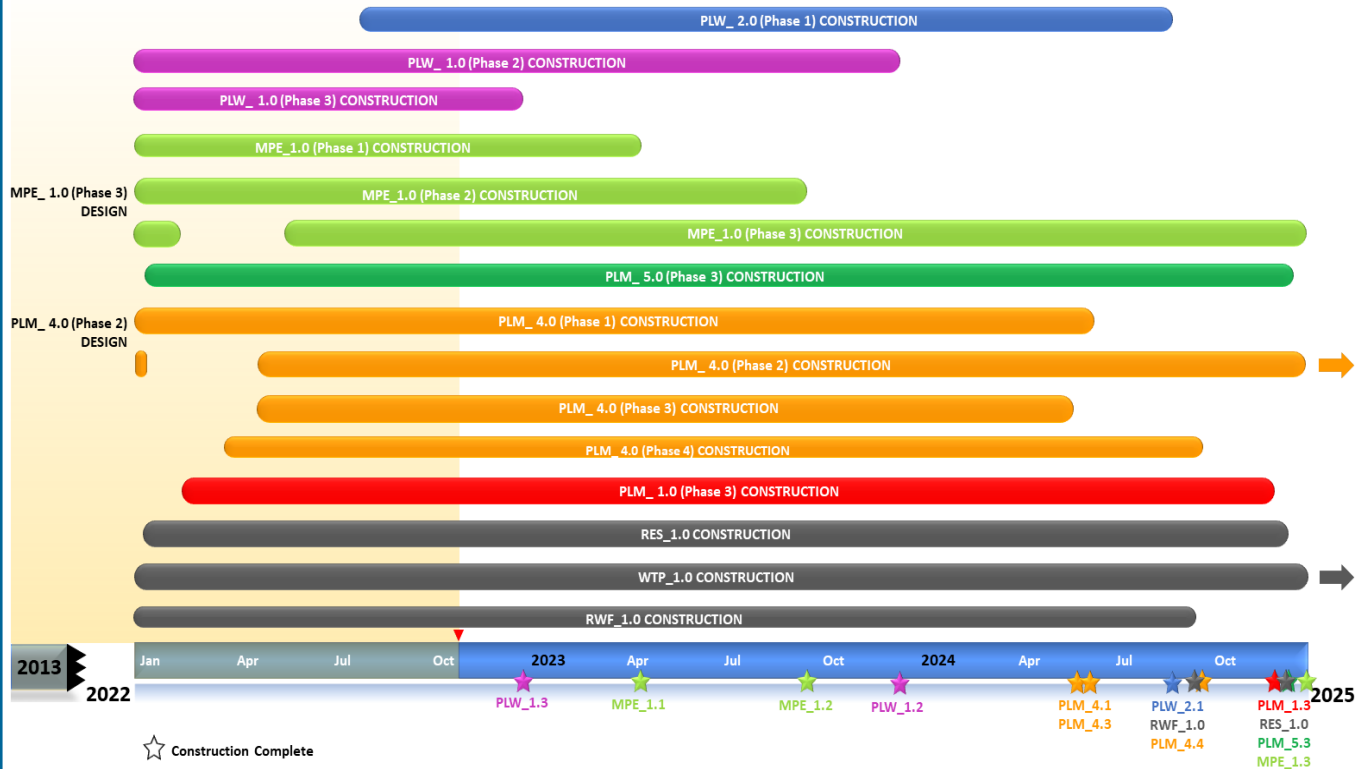
Lowering an auger into the launch pit.



Installing 66" carrier pipe into a 84" casing.

## Schedule Summary

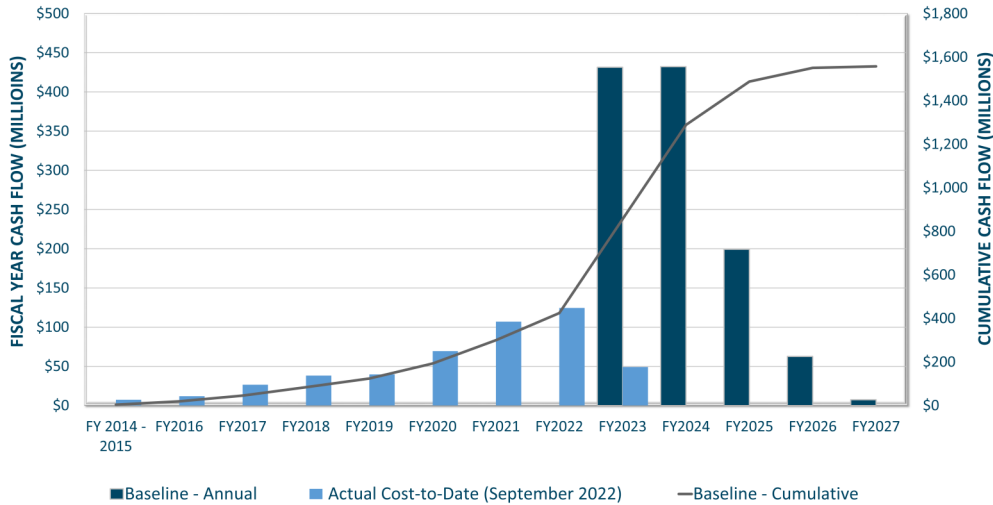
WWSP design and planning began in 2013; the Willamette Water Supply System is expected to be in service by July 2026. Below are the major milestones and activities forecasted from 2022 to 2025\*. The WWSP team is committed to on-time delivery. See page 4 for descriptions of the projects referenced below.



\*The actual duration of projects continues to be refined and is subject to change.

## Forecast Cost Summary

The graph below illustrates the projected WWSP cash flow by fiscal year (FY July 1 to June 30)\*. The cumulative cash flow establishes the budgeted \$1.6 billion, which accounts for actual and current projected costs, including projected escalation in the cost of labor, materials, and equipment required to build WWSP projects.



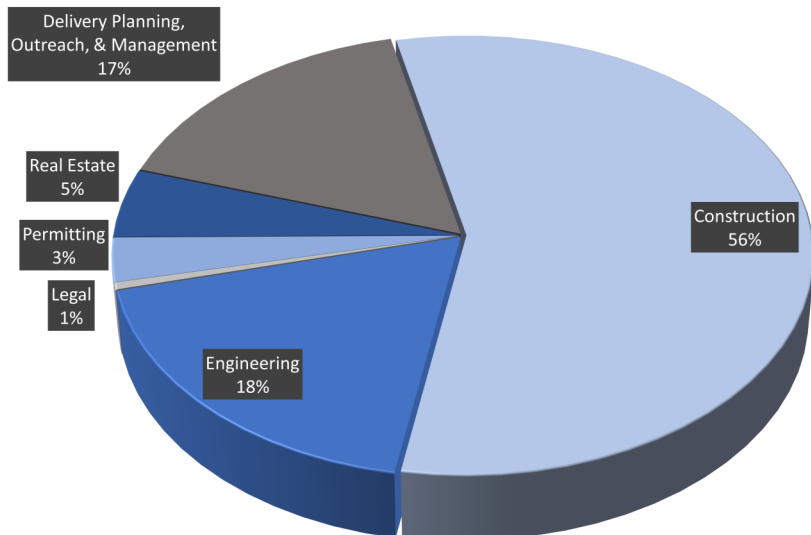
Costs to date for FY 2023 are \$49.1 million. Cumulative costs are projected to be \$834 million through the end of FY 2023.

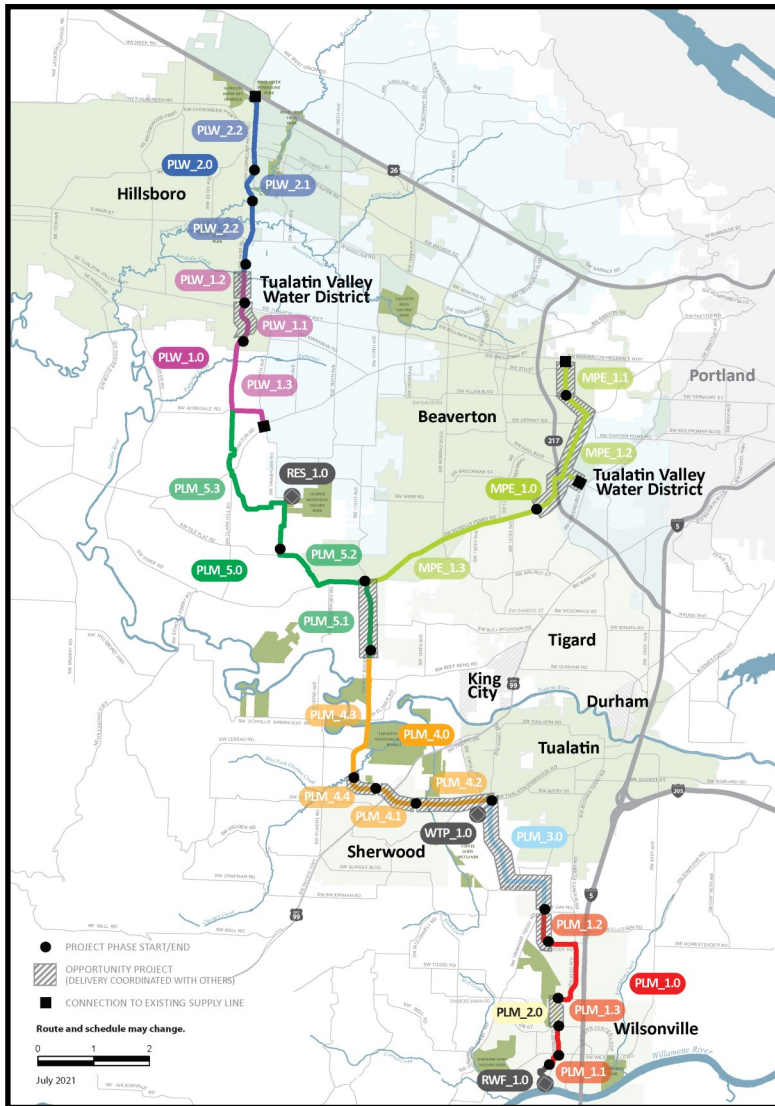
\*Current program forecast at completion may vary from baseline cumulative budget due to interim approved changes.

## Cumulative Cost Summary

WWSP cumulative costs are tracked and updated monthly. The chart below summarizes the distribution of cumulative costs through September 2022.

**Cumulative Water Supply Program costs to date are approximately \$473.9 million, with the majority spent on planning, engineering, and construction.**





**PLW\_2.0 Cornelius Pass Pipeline Project**  
(Frances Road to Highway 26)

*Description:* 3.3-mile water pipeline along Cornelius Pass Rd. from Frances St. to Hwy 26 with Phase 1 consisting of 1/2 mile of pipeline beginning at Orenco Woods Nature Park; connects to existing supply lines for City of Hillsboro and TVWD.  
*Status:* Phase 1: Construction; Phase 2: Deferred

**PLW\_1.0 South Hillsboro Area Pipeline Project**  
(Farmington Road to Frances Street)

*Description:* 4-mile water pipeline from SW Farmington Rd. at SW 209th Ave. to Cornelius Pass Rd. at Frances St.  
*Status:* Phase 1: Complete; Phase 2: Construction; Phase 3: Construction

**MPE\_1.0 Metzger Pipeline East Project**  
(Roy Rogers Road to Beaverton Hillsdale Hwy)

*Description:* 7.3-mile water pipeline to be built along SW Scholls Ferry Rd. between SW Roy Rogers Rd. and Allen Blvd.; connects to Metzger service area at SW Oleson Rd. and TVWD's system.  
*Status:* Phase 1: Construction; Phase 2: Construction; Phase 3: Construction

**RES\_1.0 South Beaverton Area Water Storage Tanks** (Storage Tanks)

*Description:* One 15-million gallon storage tank located on Cooper Mountain.  
*Status:* Construction

**PLM\_5.0 Scholls Area Pipeline Project**  
(North of Beef Bend Road to Rosedale Road)

*Description:* 7-mile water pipeline from SW Roy Rogers Rd. 0.5-mile north of SW Beef Bend Rd. to SW Rosedale Rd.  
*Status:* Phase 1: Complete; Phase 2: Complete; Phase 3: Construction

**PLM\_4.0 Tualatin-Sherwood Area Pipeline Project**  
(SW 124th Avenue to north of Beef Bend Road)

*Description:* 5.3-mile water pipeline from 124th Ave. at SW Tualatin Sherwood Rd. along SW Roy Rogers Rd. to 0.5 miles north of SW Beef Bend Rd.  
*Status:* Phase 1: Construction; Phase 2: Construction; Phase 3: Construction; Phase 4: Construction

**PLM\_3.0 124th Avenue Partnership Project**  
(SW 124th Avenue Extension)

*Description:* 2.7-mile water pipeline from Grahams Ferry Rd. at Day Rd. to 124th Ave. at SW Tualatin Sherwood Rd.  
*Status:* Complete

**PLM\_2.0 Kinsman Road Partnership Project**  
(Kinsman Road Extension)

*Description:* 0.6-mile water pipeline along Kinsman Rd. between Barber St. and Boeckman Rd.  
*Status:* Complete

**PLM\_1.0 Wilsonville Area Pipeline Project**  
(WRWTP to Day Road)

*Description:* 3.3-mile water pipeline from WRWTP to intersection of SW Garden Acres Rd. at Day Rd.  
*Status:* Phase 1: Complete; Phase 2: Complete; Phase 3: Construction

**WTP\_1.0 Willamette Water Supply System Water Treatment Plant**  
(Water Treatment Plant (WTP))

*Description:* 60-million gallon per day water treatment plant (WTP\_1.0), including a finished water pump station (FPS\_1.0) and a control system (DCS\_1.0) located in Sherwood.

*Status:* Construction (WTP, FPS, DCS)

**RWF\_1.0 Raw Water Facilities Expansion**  
(Raw Water Facilities (RWF) Expansion)

*Description:* Expansion of the existing raw water pump station and intake at the Willamette River WTP (WRWTP) in Wilsonville to 60 million gallons per day of initial capacity for the Willamette Water Supply System.

*Status:* Phase 1: Complete; Phase 2: Construction

The mid-Willamette River at Wilsonville is the supply source for the WWSS. The system consists of modifying the existing river intake and expanding pumping capacity, building more than 30 miles of drinking water pipeline, reservoir storage facilities on Cooper Mountain, and a new WTP in Sherwood.

For more information about the WWSP, visit [www.ourreliablewater.org](http://www.ourreliablewater.org) or call 503.941.4570.