

Our Future Water Supply

The Willamette Water Supply System Commission (WWSS Commission) is an Oregon intergovernmental entity formed by Tualatin Valley Water District (TVWD), the City of Hillsboro, and the City of Beaverton. The WWSS Commission was formed to build the Willamette Water Supply System (WWSS) in response to planned growth in their service areas. TVWD has been designated the Managing Agency for the WWSS Commission, and TVWD operates the Willamette Water Supply Program (WWSP) to plan, design, and construct the WWSS. The WWSS will provide an additional resilient water supply for Washington County. When complete, the WWSS will be one of Oregon’s most seismically-resilient water systems—built to better withstand natural disasters, protect public health, and speed regional economic recovery through restoring critical services more quickly. The new system will be completed by 2026.

Willamette Water Supply

Our Reliable Water

Monthly Progress Report

Month End August 2022

Project Spotlight: Tualatin-Sherwood Area Pipeline

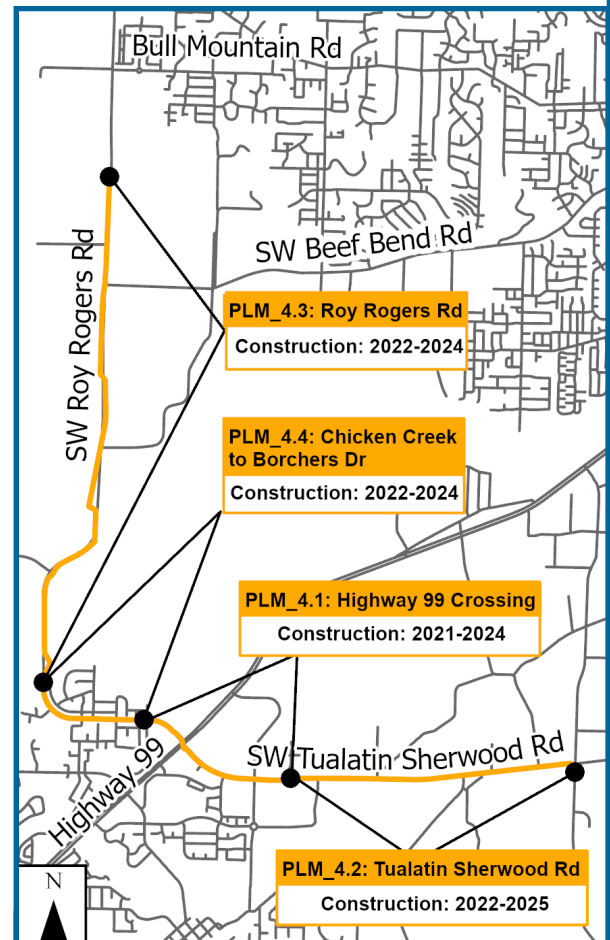
The Tualatin-Sherwood Area Pipeline Project (PLM_4.0) is a 5.3-mile section of the more than 30 miles of Willamette Water Supply System (WWSS) transmission main. The 66-inch-diameter, welded-steel, cement-lined pipe section will be constructed in four phases, all of which will be underway by the end of 2022:

PLM_4.1 (Partnership Project with Washington County): This project includes pipeline installation beneath the Highway 99 and Tualatin-Sherwood Road intersection. County road improvements include widening to five travel lanes, bike lanes, sidewalks, storm drains, and street lighting.

PLM_4.2 (Partnership Project with Washington County): PLM_4.2 includes installing approximately 1.4 miles of 66-inch welded-steel water pipeline beneath two roadways and one railroad.

PLM_4.3: This project includes installing approximately 2.5 miles of pipe, including trenchless pipe installation beneath the Tualatin River and an additional trenchless crossing beneath Chicken Creek.

PLM_4.4 (Partnership Project with Washington County): The WWSP will install approximately 0.5 miles of 66-inch-diameter welded-steel water transmission pipeline. The pipeline will be installed as part of the County’s Roy Rogers Road (Chicken Creek to Borchers Drive) project.



Tualatin-Sherwood Area Pipeline Project (PLM_4.0)

REALIZING THE BENEFITS OF COLLABORATION

The WWSP’s partnership with Washington County on PLM_4.0 demonstrates the power of public sector collaboration and provides many benefits to customers and the community, including:

- ➔ **Reduced Traffic Impacts:** Pipe installation will occur while the County performs the already planned road work, allowing the roadway to be impacted only once for two projects.
- ➔ **Cost Savings:** Partnering with the County enables cost savings for both organizations.

Project of the Month

The WWSP is well underway with many projects currently in the construction phase. The project photos below highlight the progress on the Metzger Pipeline East (MPE) 1.2 project. Additional information on the project is available at <https://www.ourreliablewater.org/mpe/>.



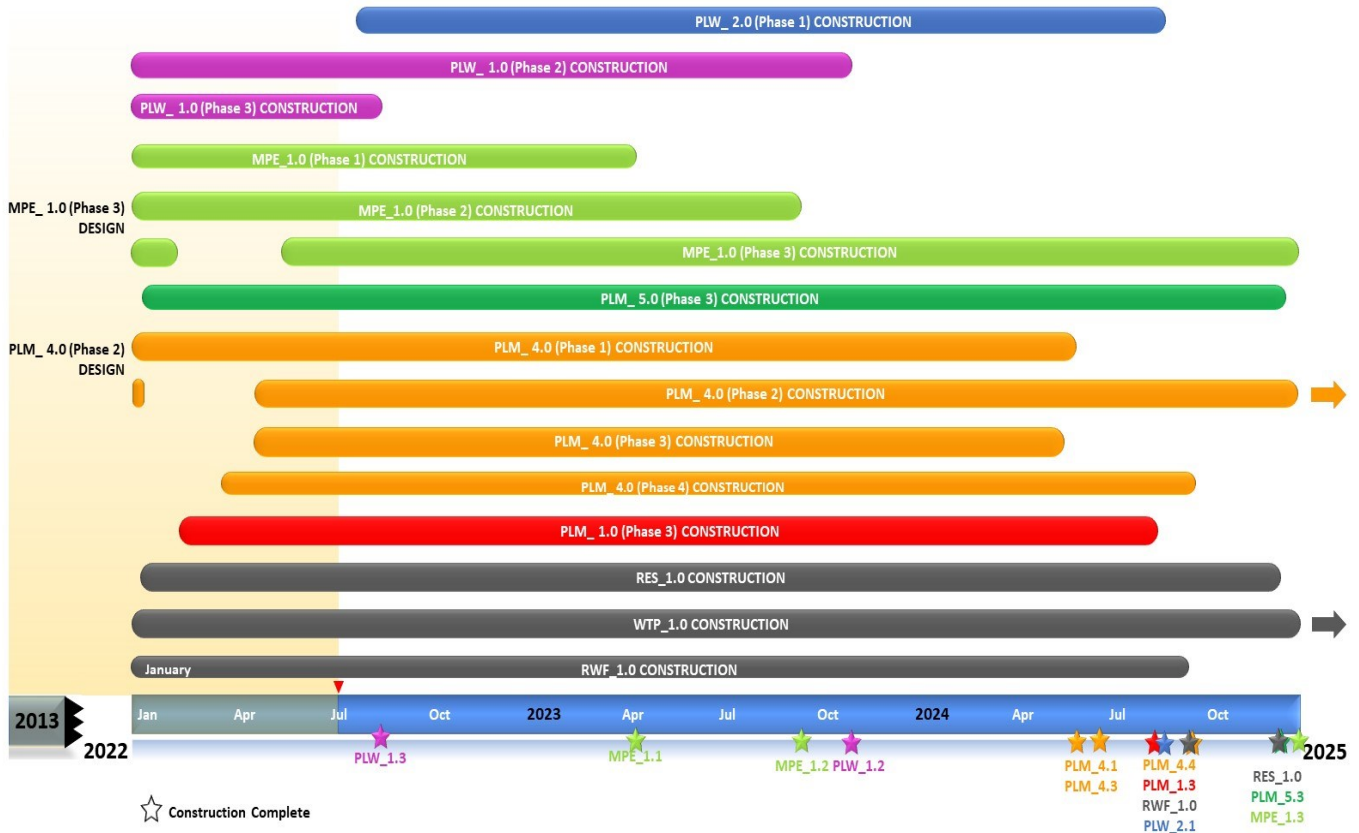
Installation of 48-inch waterline on Scholls Ferry Rd. near Hall Blvd.



Dewatering pumps operating at Drive #1.

Schedule Summary

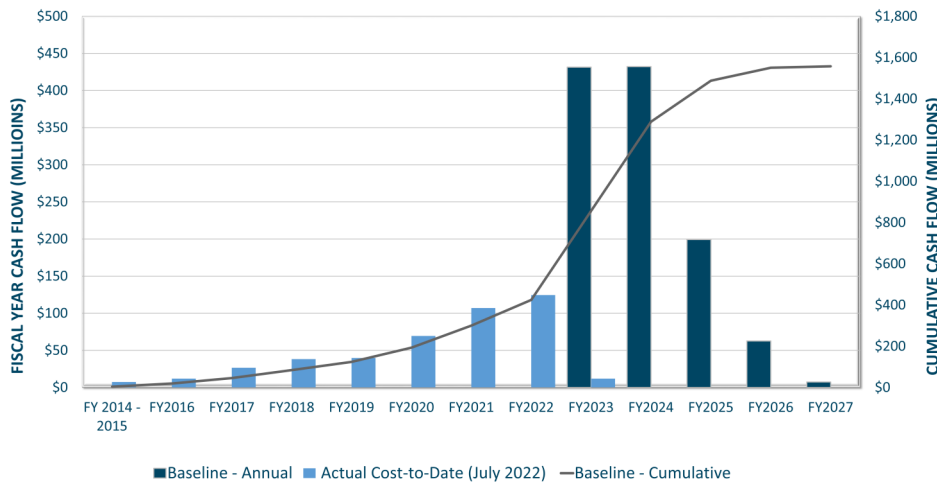
WWSP design and planning began in 2013; the Willamette Water Supply System is expected to be in service by July 2026. Below are the major milestones and activities forecasted from 2022 to 2025*. The WWSP team is committed to on-time delivery. See page 4 for descriptions of the projects referenced below.



*The actual order and duration of projects continues to be refined and is subject to change.

Forecast Cost Summary

The graph below illustrates the projected WWSP cash flow by fiscal year (FY July 1 to June 30)*. The cumulative cash flow establishes the budgeted \$1.6 billion, which accounts for actual and current projected costs, including projected escalation in the cost of labor, materials, and equipment required to build WWSP projects.



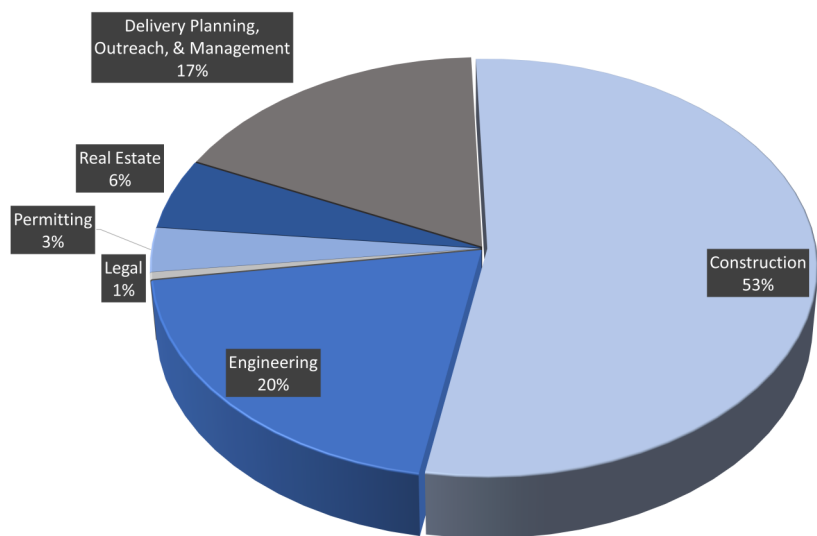
Costs to date for FY 2023 are \$11.9 million. Cumulative costs are projected to be \$844 million through the end of FY 2023.

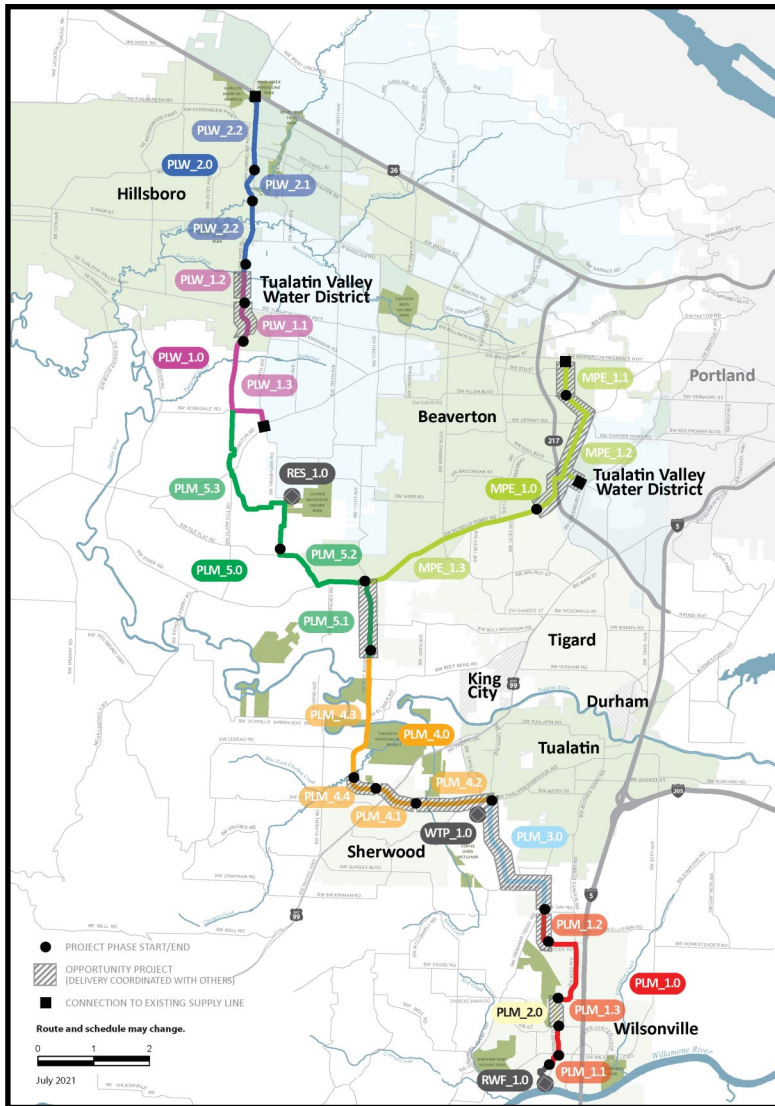
*Current program forecast at completion may vary from baseline cumulative budget due to interim approved changes.

Cumulative Cost Summary

WWSP cumulative costs are tracked and updated monthly. The chart below summarizes the distribution of cumulative costs through July 2022.

Cumulative Water Supply Program costs to date are approximately \$437 million, with the majority spent on planning, engineering, and construction.





PLW_2.0 Cornelius Pass Pipeline Project
(Frances Road to Highway 26)

Description: 3.3-mile water pipeline along Cornelius Pass Rd. from Frances St. to Hwy 26 with Phase 1 consisting of 1/2 mile of pipeline beginning at Orenco Woods Nature Park; connects to existing supply lines for City of Hillsboro and TVWD.

Status: Phase 1: Construction; Phase 2: Deferred

PLW_1.0 South Hillsboro Area Pipeline Project
(Farmington Road to Frances Street)

Description: 4-mile water pipeline from SW Farmington Rd. at SW 209th Ave. to Cornelius Pass Rd. at Frances St.

Status: Phase 1: Complete; Phase 2: Construction; Phase 3: Construction

MPE_1.0 Metzger Pipeline East Project
(Roy Rogers Road to Beaverton Hillsdale Hwy)

Description: 7.3-mile water pipeline to be built along SW Scholls Ferry Rd. between SW Roy Rogers Rd. and Allen Blvd.; connects to Metzger service area at SW Oleson Rd. and TVWD's system.

Status: Phase 1: Construction; Phase 2: Construction; Phase 3: Construction

RES_1.0 South Beaverton Area Water Storage Tanks (Storage Tanks)

Description: One 15-million gallon storage tank located on Cooper Mountain.

Status: Construction

PLM_5.0 Scholls Area Pipeline Project
(North of Beef Bend Road to Rosedale Road)

Description: 7-mile water pipeline from SW Roy Rogers Rd. 0.5-mile north of SW Beef Bend Rd. to SW Rosedale Rd.

Status: Phase 1: Complete; Phase 2: Complete; Phase 3: Construction

PLM_4.0 Tualatin-Sherwood Area Pipeline Project
(SW 124th Avenue to north of Beef Bend Road)

Description: 5.3-mile water pipeline from 124th Ave. at SW Tualatin Sherwood Rd. along SW Roy Rogers Rd. to 0.5 miles north of SW Beef Bend Rd.

Status: Phase 1: Construction; Phase 2: Construction; Phase 3: Construction; Phase 4: Construction

PLM_3.0 124th Avenue Partnership Project
(SW 124th Avenue Extension)

Description: 2.7-mile water pipeline from Grahams Ferry Rd. at Day Rd. to 124th Ave. at SW Tualatin Sherwood Rd.

Status: Complete

PLM_2.0 Kinsman Road Partnership Project
(Kinsman Road Extension)

Description: 0.6-mile water pipeline along Kinsman Rd. between Barber St. and Boeckman Rd.

Status: Complete

PLM_1.0 Wilsonville Area Pipeline Project
(WRWTP to Day Road)

Description: 3.3-mile water pipeline from WRWTP to intersection of SW Garden Acres Rd. at Day Rd.

Status: Phase 1: Complete; Phase 2: Complete; Phase 3: Construction

WTP_1.0 Willamette Water Supply System Water Treatment Plant
(Water Treatment Plant (WTP))

Description: 60-million gallon per day water treatment plant (WTP_1.0), including a finished water pump station (FPS_1.0) and a control system (DCS_1.0) located in Sherwood.

Status: Construction (WTP, FPS, DCS)

RWF_1.0 Raw Water Facilities Expansion
(Raw Water Facilities (RWF) Expansion)

Description: Expansion of the existing raw water pump station and intake at the Willamette River WTP (WRWTP) in Wilsonville to 60 million gallons per day of initial capacity for the Willamette Water Supply System.

Status: Phase 1: Complete; Phase 2: Design Complete

The mid-Willamette River at Wilsonville is the supply source for the WWSS. The system consists of modifying the existing river intake and expanding pumping capacity, building more than 30 miles of drinking water pipeline, reservoir storage facilities on Cooper Mountain, and a new WTP in Sherwood.

For more information about the WWSP, visit www.ourreliablewater.org or call 503.941.4570.