

## Our Future Water Supply

The Willamette Water Supply System Commission (WWSS Commission) is an Oregon intergovernmental entity formed by Tualatin Valley Water District (TVWD), the City of Hillsboro, and the City of Beaverton. The WWSS Commission was formed to build the Willamette Water Supply System (WWSS) in response to planned growth in their service areas. TVWD has been designated the Managing Agency for the WWSS Commission, and TVWD operates the Willamette Water Supply Program (WWSP) to plan, design, and construct the WWSS. The WWSS will provide an additional resilient water supply for Washington County. When complete, the WWSS will be one of Oregon's most seismically-resilient water systems—built to better withstand natural disasters, protect public health, and speed regional economic recovery through restoring critical services more quickly. The new system will be completed by 2026.

# Willamette Water Supply

## Our Reliable Water

Monthly Progress Report

Month End June 2022

## Water Treatment Plant Construction is Underway

The Willamette Water Supply Program and Construction Manager/General Contractor (CM/GC) Sundt Construction recently began construction on the Water Treatment Plant (WTP) in Sherwood. The project broke ground in February 2022 with survey, site clearing, site grading, and stockpiling materials, as well as developing the schedule for drilling, blasting, and mass excavation activities. Rock will be crushed, processed, and reused on site as fill, reducing the amount of hauling required on local roadways. Underground piping and facility structural work are anticipated to begin later this year.

In addition to playing a critical role in improving the region's ability to recover after a large earthquake, other benefits include:

- Improving travel for the public—by building a new east-west road crossing 124th Avenue that will connect Tualatin and Sherwood
- Enhancing emergency preparedness—by producing drinking water for emergency responders and the community within 48 hours of a major seismic event
- Providing educational opportunities—through a public overlook of a preserved natural area, and other educational features

The site is geologically stable, and will provide superior seismic resiliency. The new plant will treat Willamette River water through a multiple barrier treatment process to meet drinking water standards. The seismically resilient Water Treatment Plant will initially provide 60 million gallons of water per day, and is designed to expand to a maximum of 120 million gallons per day. To learn more about this project, visit [ourreliablewater.org/water-treatment-plant/](http://ourreliablewater.org/water-treatment-plant/).



GENERAL SITE STRIPPING, SOIL STOCKPILING, AND ROCK STOCKPILING



ADMINISTRATION BUILDING ENTRY COURTYARD (VIEW FACING EAST)

GREENWORKS



EXCAVATING AREA 35 CLEARWELL, AREA 53 PUMP STATION, AND AREA 54 SURGE MITIGATION

## Procurement & Business Opportunities

The WWSP staff are preparing for several upcoming professional services and construction contractor procurements. Listed below are active procurements and upcoming events and procurements. Procurement opportunities are also published at <http://www.ourreliablewater.org/business-opportunities>.

### Current Procurements

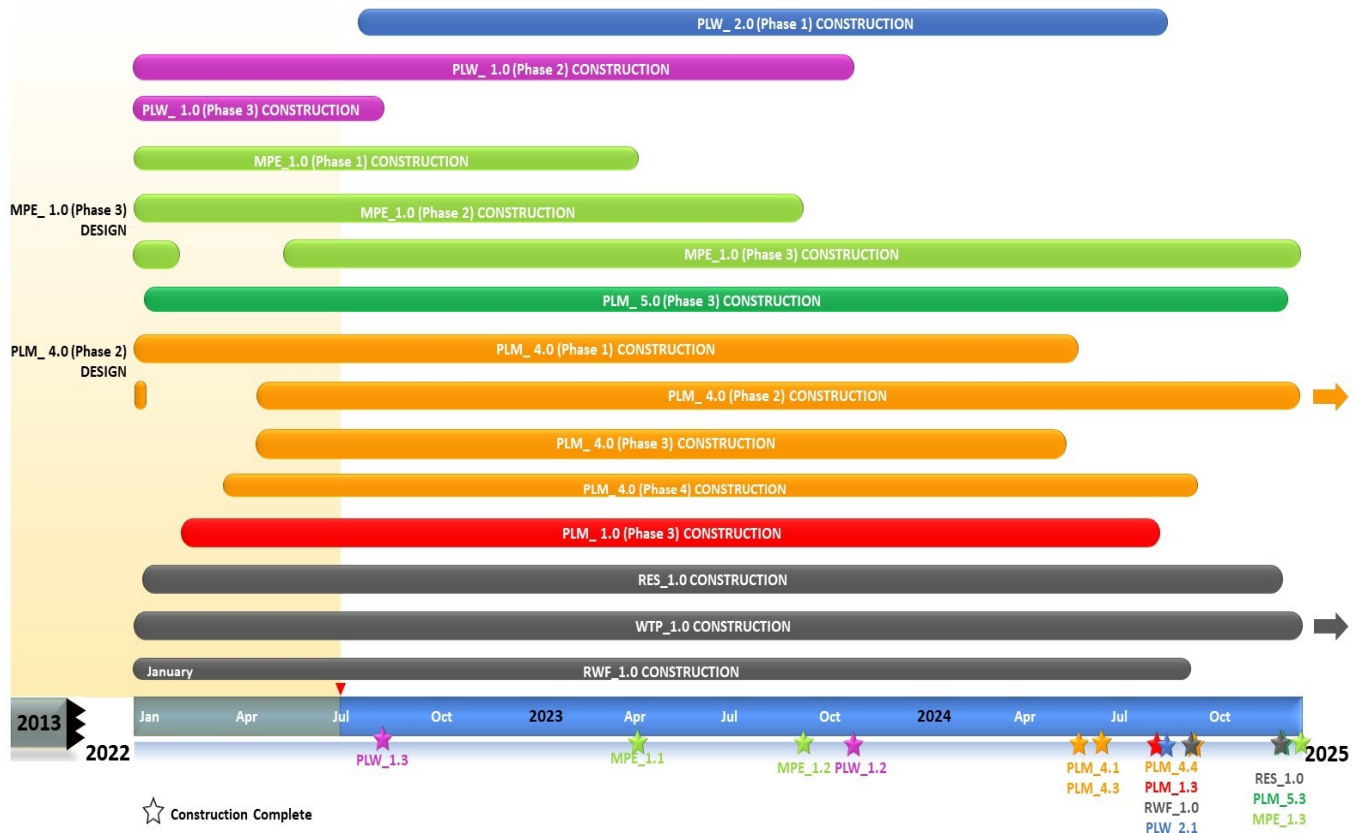
- N/A

### Upcoming Procurements

- N/A

## Schedule Summary

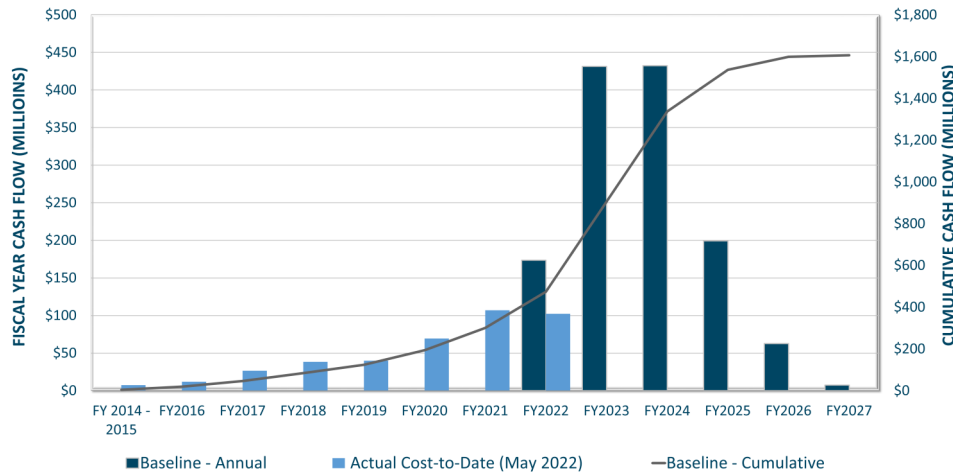
WWSP design and planning began in 2013; the Willamette Water Supply System is expected to be in service by July 2026. Below are the major milestones and activities forecasted from 2022 to 2025\*. The WWSP team is committed to on-time delivery. See page 4 for descriptions of the projects referenced below.



\*The actual order and duration of projects continues to be refined and is subject to change.

## Forecast Cost Summary

The graph below illustrates the projected WWSP cash flow by fiscal year (FY July 1 to June 30)\*. The cumulative cash flow establishes the budgeted \$1.6 billion, which accounts for actual and current projected costs, including projected escalation in the cost of labor, materials, and equipment required to build WWSP projects.



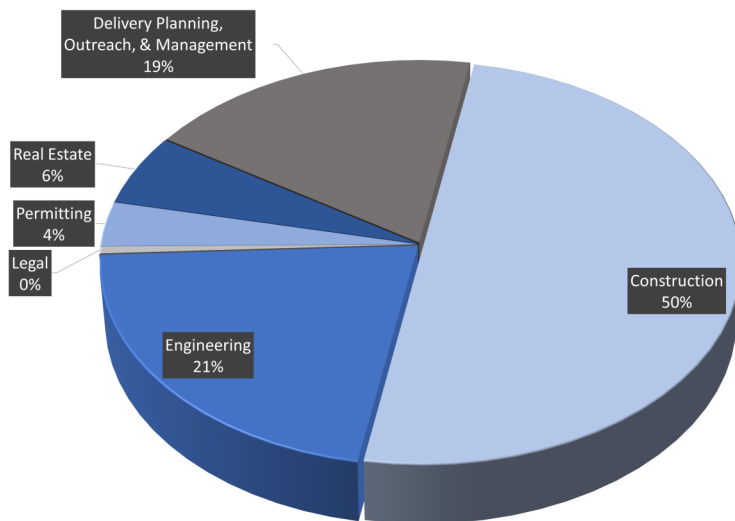
Costs to date for FY 2022 are \$102 million. Cumulative costs are projected to be \$435 million through the end of FY 2022.

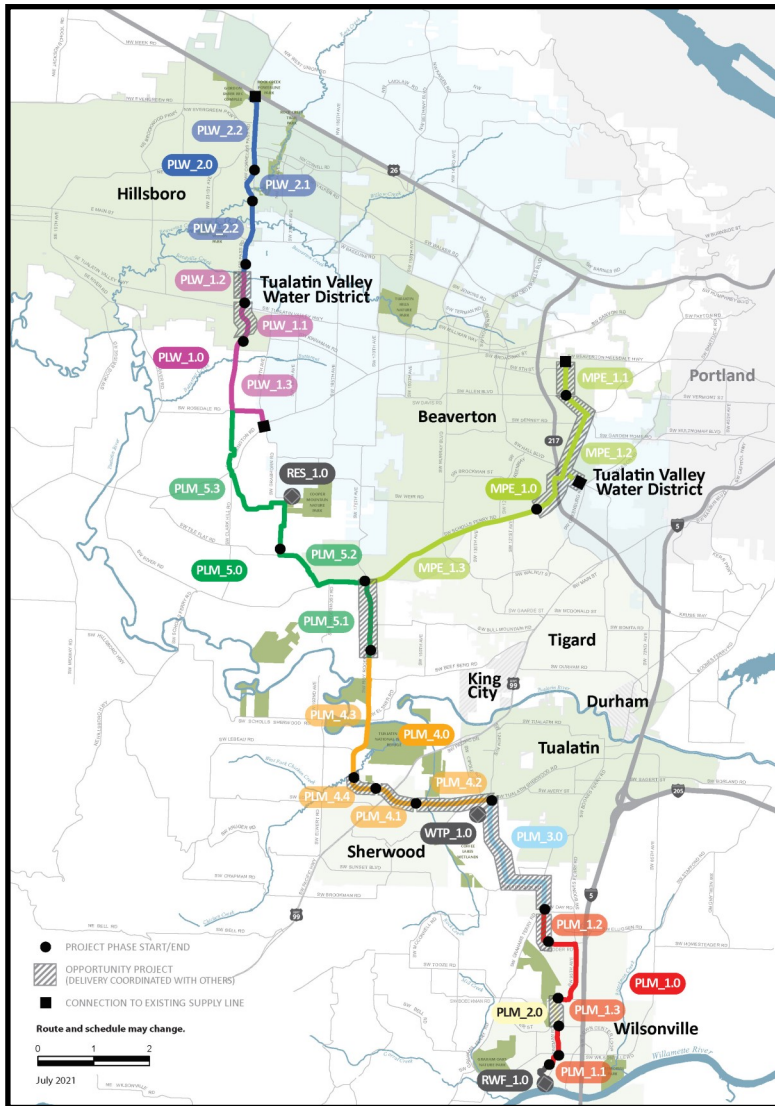
\*Current program forecast at completion may vary from baseline cumulative budget due to interim approved changes.

## Cumulative Cost Summary

WWSP cumulative costs are tracked and updated monthly. The chart below summarizes the distribution of cumulative costs through May 2022.

**Cumulative Water Supply Program costs to date are approximately \$402 million, with the majority spent on planning, engineering, and construction.**





**PLW\_2.0 Cornelius Pass Pipeline Project**  
(Frances Road to Highway 26)

*Description:* 3.3-mile water pipeline along Cornelius Pass Rd. from Frances St. to Hwy 26 with Phase 1 consisting of 1/2 mile of pipeline beginning at Orenco Woods Nature Park; connects to existing supply lines for City of Hillsboro and TVWD.

*Status:* Phase 1: Design Complete; Phase 2: Deferred

**PLW\_1.0 South Hillsboro Area Pipeline Project**  
(Farmington Road to Frances Street)

*Description:* 4-mile water pipeline from SW Farmington Rd. at SW 209th Ave. to Cornelius Pass Rd. at Frances St.

*Status:* Phase 1: Complete; Phase 2: Construction; Phase 3: Construction

**MPE\_1.0 Metzger Pipeline East Project**  
(Roy Rogers Road to Beaverton Hillsdale Hwy)

*Description:* 7.3-mile water pipeline to be built along SW Scholls Ferry Rd. between SW Roy Rogers Rd. and Allen Blvd.; connects to Metzger service area at SW Oleson Rd. and TVWD's system.

*Status:* Phase 1: Construction; Phase 2: Construction; Phase 3: Construction

**RES\_1.0 South Beaverton Area Water Storage Tanks** (Storage Tanks)

*Description:* One 15-million gallon storage tank located on Cooper Mountain.

*Status:* Construction

**PLM\_5.0 Scholls Area Pipeline Project**  
(North of Beef Bend Road to Rosedale Road)

*Description:* 7-mile water pipeline from SW Roy Rogers Rd. 0.5-mile north of SW Beef Bend Rd. to SW Rosedale Rd.

*Status:* Phase 1: Complete; Phase 2: Complete; Phase 3: Construction

**PLM\_4.0 Tualatin-Sherwood Area Pipeline Project**  
(SW 124th Avenue to north of Beef Bend Road)

*Description:* 5.3-mile water pipeline from 124th Ave. at SW Tualatin Sherwood Rd. along SW Roy Rogers Rd. to 0.5 miles north of SW Beef Bend Rd.

*Status:* Phase 1: Construction; Phase 2: Construction; Phase 3: Construction; Phase 4: Construction

**PLM\_3.0 124th Avenue Partnership Project**  
(SW 124th Avenue Extension)

*Description:* 2.7-mile water pipeline from Grahams Ferry Rd. at Day Rd. to 124th Ave. at SW Tualatin Sherwood Rd.

*Status:* Complete

**PLM\_2.0 Kinsman Road Partnership Project**  
(Kinsman Road Extension)

*Description:* 0.6-mile water pipeline along Kinsman Rd. between Barber St. and Boeckman Rd.

*Status:* Complete

**PLM\_1.0 Wilsonville Area Pipeline Project**  
(WRWTP to Day Road)

*Description:* 3.3-mile water pipeline from WRWTP to intersection of SW Garden Acres Rd. at Day Rd.

*Status:* Phase 1: Complete; Phase 2: Complete; Phase 3: Construction

**WTP\_1.0 Willamette Water Supply System Water Treatment Plant**  
(Water Treatment Plant (WTP))

*Description:* 60-million gallon per day water treatment plant (WTP\_1.0), including a finished water pump station (FPS\_1.0) and a control system (DCS\_1.0) located in Sherwood.

*Status:* Construction (WTP, FPS, DCS)

**RWF\_1.0 Raw Water Facilities Expansion**  
(Raw Water Facilities (RWF) Expansion)

*Description:* Expansion of the existing raw water pump station and intake at the Willamette River WTP (WRWTP) in Wilsonville to 60 million gallons per day of initial capacity for the Willamette Water Supply System.

*Status:* Phase 1: Construction; Phase 2: Design Complete

The mid-Willamette River at Wilsonville is the supply source for the WWSS. The system consists of modifying the existing river intake and expanding pumping capacity, building more than 30 miles of drinking water pipeline, reservoir storage facilities on Cooper Mountain, and a new WTP in Sherwood.

For more information about the WWSP, visit [www.ourreliablewater.org](http://www.ourreliablewater.org) or call 503.941.4570.