

## Our Future Water Supply

The Willamette Water Supply System Commission (WWSS Commission) is an Oregon intergovernmental entity formed by Tualatin Valley Water District (TVWD), the City of Hillsboro, and the City of Beaverton. The WWSS Commission was formed to build the Willamette Water Supply System (WWSS) in response to planned growth in their service areas. TVWD has been designated the Managing Agency for the WWSS Commission, and TVWD operates the Willamette Water Supply Program (WWSP) to plan, design, and construct the WWSS. The WWSS will provide an additional resilient water supply for Washington County. When complete, the WWSS will be one of Oregon's most seismically-resilient water systems—built to better withstand natural disasters, protect public health, and speed regional economic recovery through restoring critical services more quickly. The new system will be completed by 2026.

# Willamette Water Supply

## Our Reliable Water

Monthly Progress Report

Month End May 2022

## Raw Water Facilities Phase 1 Complete

The Willamette Water Supply Program, working with general contractor Kiewit, has successfully completed Phase 1 of the Raw Water Facilities Project. In coordination with the City of Wilsonville, this project is an expansion of the existing Raw Water Pump Station and intake infrastructure at the Willamette River Water Treatment Plant. The expansion establishes an initial Willamette Water Supply System (WWSS) intake capacity of 60 million gallons per day.

### Phase 1 work included:

- Replacement of existing fish screens and installation of protection piles within the river. Larger, more modern fish screens allow increased flow to accommodate increased demand while still providing protection for aquatic species.
- Seismic upgrades to the existing raw water intake pipeline between the fish screens and pump station.
- Riverbank stabilization directly behind the pump station to mitigate slope failure during a seismic event.
- Intensive structural modifications to the existing pump station building to provide resiliency during a major seismic event.
- A 240-foot-long, 70-foot-deep, 84-inch-diameter trenchless crossing below Arrowhead Creek and associated restoration work.
- A new 66-inch-diameter raw water pipeline from the Raw Water Pump Station, through Arrowhead Creek Park, connecting to new WWSS water transmission piping that will ultimately send raw water to the new WWSS treatment plant.
- Restoration and new public amenities within the park.
- Installation of 190, 70-foot-deep, reinforced concrete foundation piles in preparation for Phase 2 structures.
- Upper site rough grading, including over 40,000 cubic yards of spoils removal, for Phase 2 construction.
- Construction of 1,400 feet of new 8-inch-diameter potable water line and appurtenances for the City of Wilsonville.
- Successful coordination with City of Wilsonville and operations staff.



Sending Shaft Riser Manway Vault and CAV vault



New Concrete Seismic Walls at Raw Water Pump Station

## Procurement & Business Opportunities

The WWSP staff are preparing for several upcoming professional services and construction contractor procurements. Listed below are active procurements and upcoming events and procurements. Procurement opportunities are also published at <http://www.ourreliablewater.org/business-opportunities>.

### Current Procurements

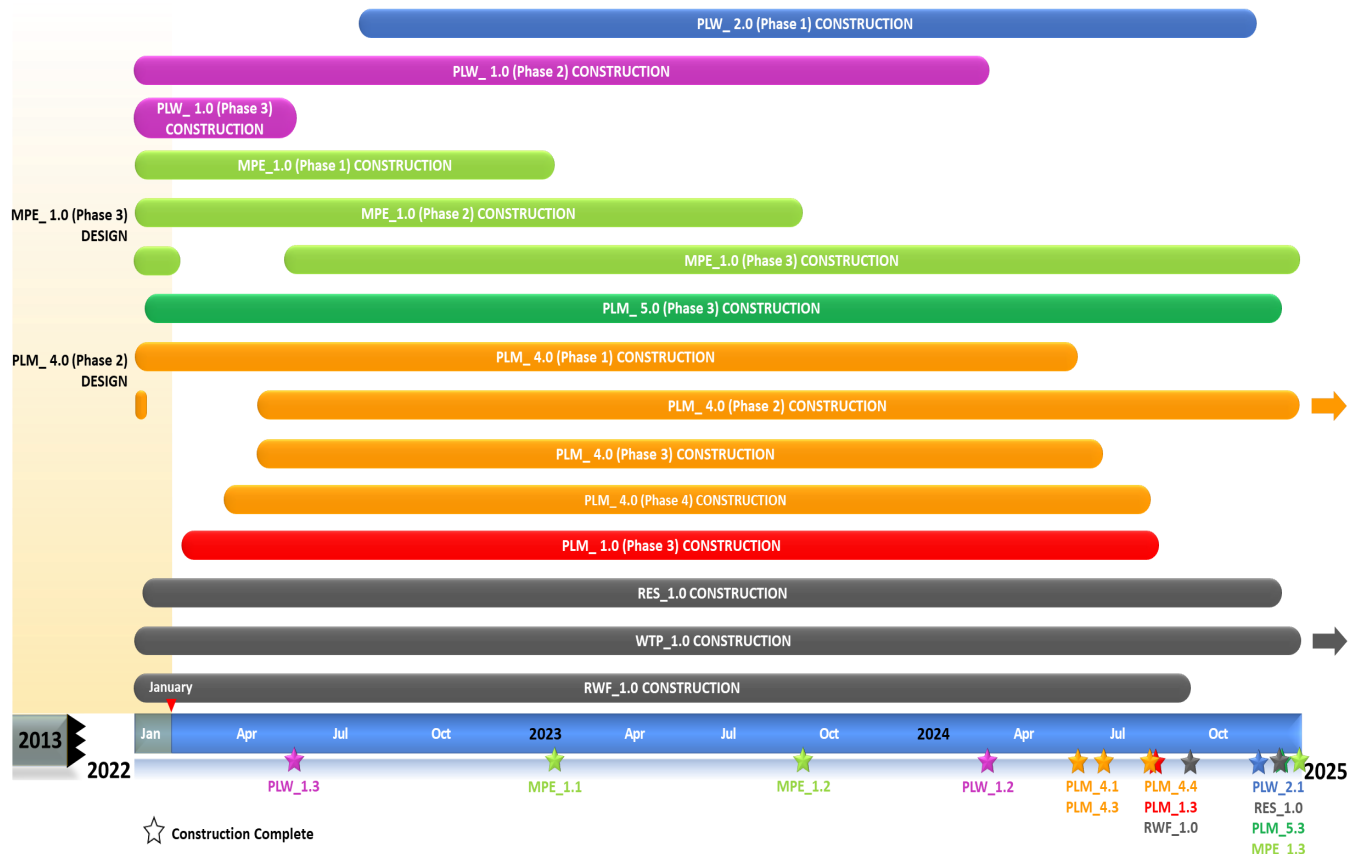
- RWF\_1.0 Guaranteed Maximum Price 2 (GMP 2) for Construction Manager/General Contractor (CMGC) (Quarter 2, 2022)

### Upcoming Procurements

- N/A

## Schedule Summary

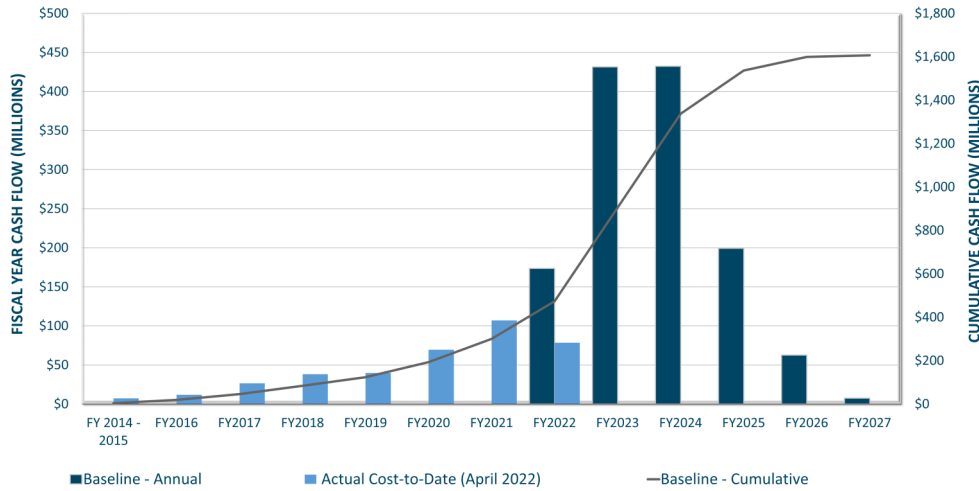
WWSP design and planning began in 2013; the Willamette Water Supply System is expected to be in service by July 2026. Below are the major milestones and activities forecasted from 2022 to 2025\*. The WWSP team is committed to on-time delivery. See page 4 for descriptions of the projects referenced below.



\*The actual order and duration of projects continues to be refined and is subject to change.

## Forecast Cost Summary

The graph below illustrates the projected WWSP cash flow by fiscal year (FY July 1 to June 30)\*. The cumulative cash flow establishes the budgeted \$1.6 billion, which accounts for actual and current projected costs, including projected escalation in the cost of labor, materials, and equipment required to build WWSP projects.



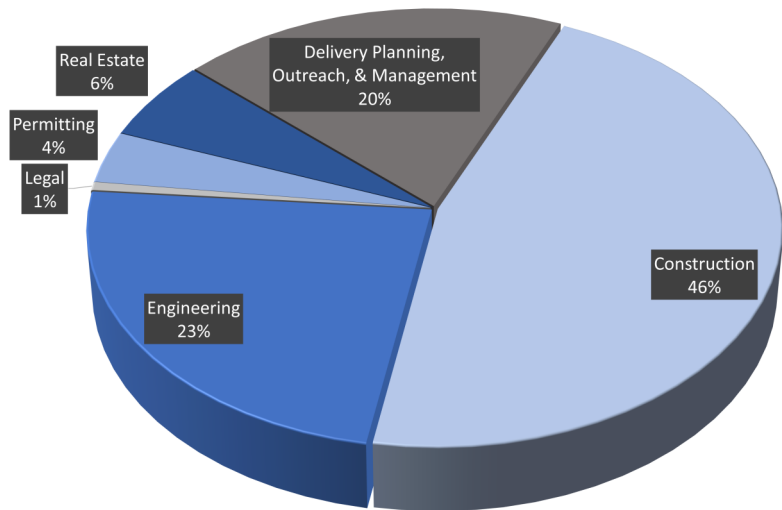
Costs to date for FY 2022 are \$79 million. Cumulative costs are projected to be \$437 million through the end of FY 2022.

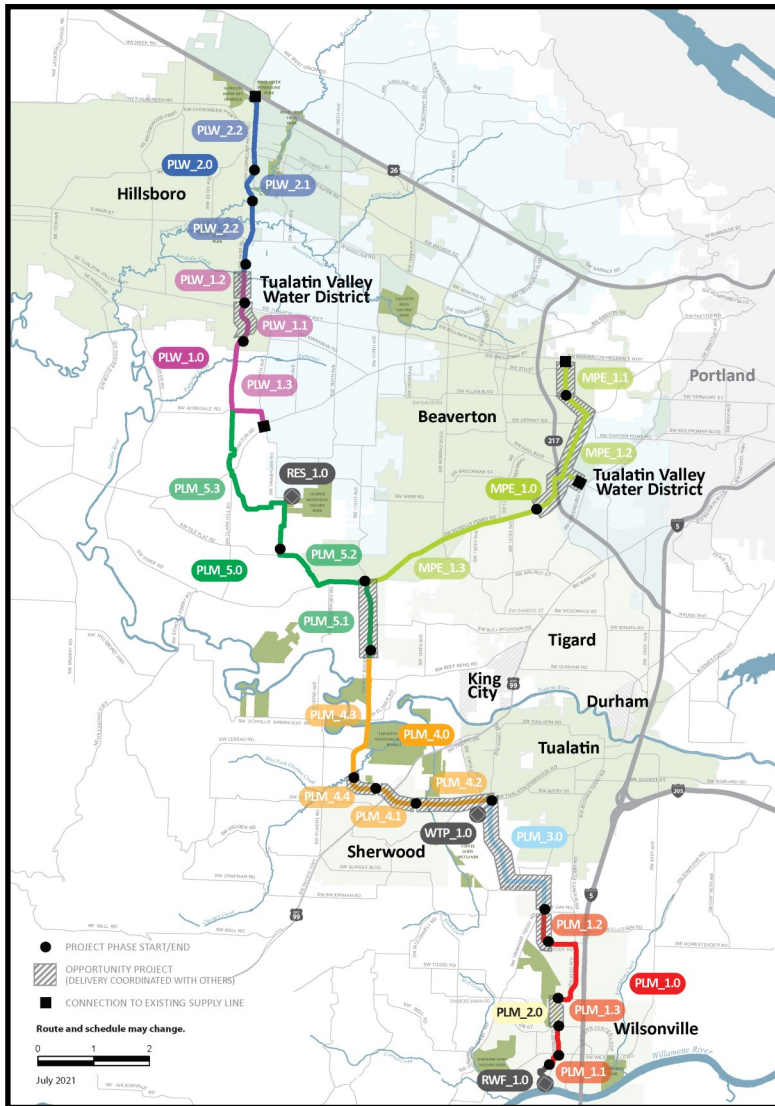
\*Current program forecast at completion may vary from baseline cumulative budget due to interim approved changes.

## Cumulative Cost Summary

WWSP cumulative costs are tracked and updated monthly. The chart below summarizes the distribution of cumulative costs through April 2022.

**Cumulative Water Supply Program costs to date are approximately \$379 million, with the majority spent on planning, engineering, and construction.**





**PLW\_2.0 Cornelius Pass Pipeline Project**  
(Frances Road to Highway 26)

*Description:* 3.3-mile water pipeline along Cornelius Pass Rd. from Frances St. to Hwy 26 with Phase 1 consisting of 1/2 mile of pipeline beginning at Orenco Woods Nature Park; connects to existing supply lines for City of Hillsboro and TVWD.

*Status:* Phase 1: Design Complete; Phase 2: Deferred

**PLW\_1.0 South Hillsboro Area Pipeline Project**  
(Farmington Road to Frances Street)

*Description:* 4-mile water pipeline from SW Farmington Rd. at SW 209th Ave. to Cornelius Pass Rd. at Frances St.

*Status:* Phase 1: Complete; Phase 2: Construction; Phase 3: Construction

**MPE\_1.0 Metzger Pipeline East Project**  
(Roy Rogers Road to Beaverton Hillsdale Hwy)

*Description:* 7.3-mile water pipeline to be built along SW Scholls Ferry Rd. between SW Roy Rogers Rd. and Allen Blvd.; connects to Metzger service area at SW Oleson Rd. and TVWD's system.

*Status:* Phase 1: Construction; Phase 2: Construction; Phase 3: Design Complete

**RES\_1.0 South Beaverton Area Water Storage Tanks** (Storage Tanks)

*Description:* One 15-million gallon storage tank located on Cooper Mountain.

*Status:* Construction

**PLM\_5.0 Scholls Area Pipeline Project**  
(North of Beef Bend Road to Rosedale Road)

*Description:* 7-mile water pipeline from SW Roy Rogers Rd. 0.5-mile north of SW Beef Bend Rd. to SW Rosedale Rd.

*Status:* Phase 1: Complete; Phase 2: Complete; Phase 3: Construction

**PLM\_4.0 Tualatin-Sherwood Area Pipeline Project**  
(SW 124th Avenue to north of Beef Bend Road)

*Description:* 5.3-mile water pipeline from 124th Ave. at SW Tualatin Sherwood Rd. along SW Roy Rogers Rd. to 0.5 miles north of SW Beef Bend Rd.

*Status:* Phase 1: Construction; Phase 2: Design Complete; Phase 3: Construction; Phase 4: Construction

**PLM\_3.0 124th Avenue Partnership Project**  
(SW 124th Avenue Extension)

*Description:* 2.7-mile water pipeline from Grahams Ferry Rd. at Day Rd. to 124th Ave. at SW Tualatin Sherwood Rd.

*Status:* Complete

**PLM\_2.0 Kinsman Road Partnership Project**  
(Kinsman Road Extension)

*Description:* 0.6-mile water pipeline along Kinsman Rd. between Barber St. and Boeckman Rd.

*Status:* Complete

**PLM\_1.0 Wilsonville Area Pipeline Project**  
(WRWTP to Day Road)

*Description:* 3.3-mile water pipeline from WRWTP to intersection of SW Garden Acres Rd. at Day Rd.

*Status:* Phase 1: Complete; Phase 2: Complete; Phase 3: Construction

**WTP\_1.0 Willamette Water Supply System Water Treatment Plant**  
(Water Treatment Plant (WTP))

*Description:* 60-million gallon per day water treatment plant (WTP\_1.0), including a finished water pump station (FPS\_1.0) and a control system (DCS\_1.0) located in Sherwood.

*Status:* Construction (WTP, FPS, DCS)

**RWF\_1.0 Raw Water Facilities Expansion**  
(Raw Water Facilities (RWF) Expansion)

*Description:* Expansion of the existing raw water pump station and intake at the Willamette River WTP (WRWTP) in Wilsonville to 60 million gallons per day of initial capacity for the Willamette Water Supply System.

*Status:* Phase 1: Complete; Phase 2: Design Complete

The mid-Willamette River at Wilsonville is the supply source for the WWSS. The system consists of modifying the existing river intake and expanding pumping capacity, building more than 30 miles of drinking water pipeline, reservoir storage facilities on Cooper Mountain, and a new WTP in Sherwood.

For more information about the WWSP, visit [www.ourreliablewater.org](http://www.ourreliablewater.org) or call 503.941.4570.