

Our Future Water Supply

The Willamette Water Supply System Commission (WWSS Commission) is an Oregon intergovernmental entity formed by Tualatin Valley Water District (TVWD), the City of Hillsboro, and the City of Beaverton. The WWSS Commission was formed to build the Willamette Water Supply System (WWSS) in response to planned growth in their service areas. TVWD has been designated the Managing Agency for the WWSS Commission, and TVWD operates the Willamette Water Supply Program (WWSP) to plan, design, and construct the WWSS. The WWSS will provide an additional resilient water supply for Washington County. When complete, the WWSS will be one of Oregon's most seismically-resilient water systems—built to better withstand natural disasters, protect public health, and speed regional economic recovery through restoring critical services more quickly. The new system will be completed by 2026.

Willamette Water Supply

Our Reliable Water

Monthly Progress Report

Month End March 2022

WWSS Construction is Ramping Up

Construction of the Willamette Water Supply System (WWSS) is ramping up in 2022, with nine projects already under construction and six additional projects entering the construction phase this year. Construction includes 20 miles of earthquake resilient pipeline, a new water treatment plant, and installation of a pre-stressed concrete water reservoir.

Below is an overview of some of the projects entering construction this year:

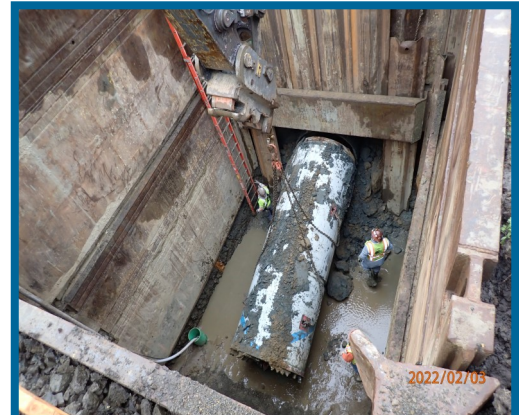
Cornelius Pass Road Pipeline Project

(PLW_2.1) Phase 1. The project includes approximately 3,300 linear feet of 48-inch pipe within the Orenco Woods Nature Park. Nearly 900 feet of the pipe length will be constructed beneath the eastern edge of the Orenco Woods Nature Park, and north through the old rail corridor to Cornelius Pass Road.

Scholls Ferry Area Pipeline (PLM_5.3) / South Beaverton Area Water Storage Tank (RES_1.0). A 15-million-gallon water tank will store treated water from the new WWSS Water Treatment Plant. PLM_5.3 is an approximately 3.8-mile-long section of pipeline that will connect to the South Hillsboro Pipeline Project.

Willamette Water Supply System 2022 Program Update

The Willamette Water Supply Program is on track to construct Oregon's most resilient water system. For an update on Program accomplishments to date, visit https://www.youtube.com/watch?v=654H6_5QdyE



MPE_1.2—Highway 217 Tunnel Crossing

Metzer Pipeline East Project (MPE_1.3).

The project consists of over 6.8 miles of 48-inch pipeline. MPE_1.3 will enter the construction phase in the second quarter of 2022.

Tualatin Sherwood Area Pipeline Project

(PLM_4.0). This 5.3-mile pipeline, about half of which is a partnership with Washington County to complete road widening work in tandem with pipeline construction, began construction in 2021 in and near the City of Sherwood.

Water Treatment Plant (WTP_1.0). The seismically resilient Water Treatment Plant will initially provide 60 million gallons of water per day, and is designed to expand to a maximum of 120 million gallons per day.

Wilsonville Area Pipeline Project (PLM_1.3)

Phase 3. Construction of the PLM_1.3 pipeline includes approximately 12,170 linear feet of 66-inch pipe that ties together already installed portions of pipeline through Wilsonville.

Procurement & Business Opportunities

The WWSP staff are preparing for several upcoming professional services and construction contractor procurements. Listed below are active procurements and upcoming events and procurements. Procurement opportunities are also published at <http://www.ourreliablewater.org/business-opportunities>.

Current Procurements

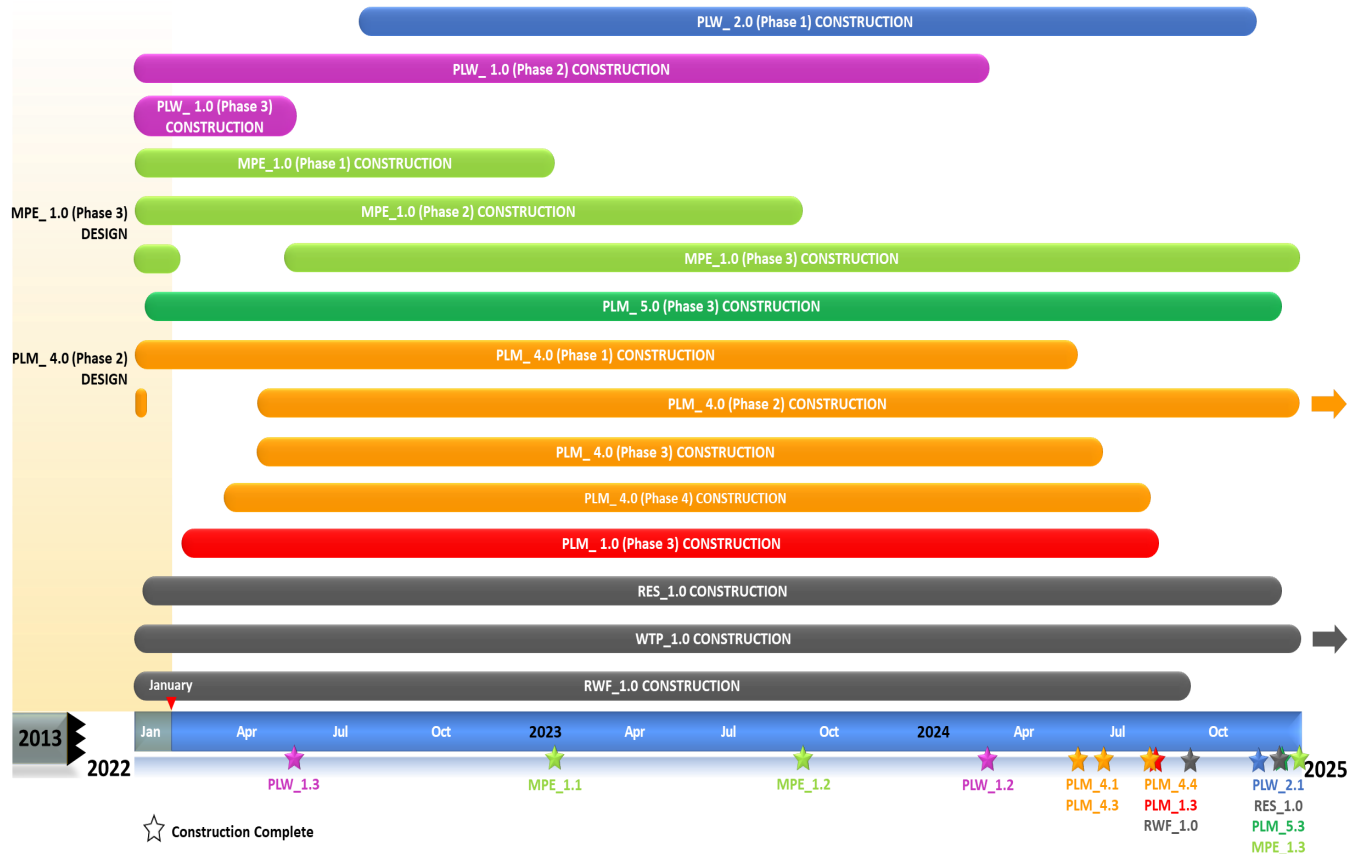
- N/A

Upcoming Procurements

- PLW_2.1 Request for Proposal (RFP) for Construction (Quarter 2, 2022)
- RWF_1.0 Guaranteed Maximum Price 2 (GMP 2) for Construction Manager/General Contractor (CMGC) (Quarter 2, 2022)

Schedule Summary

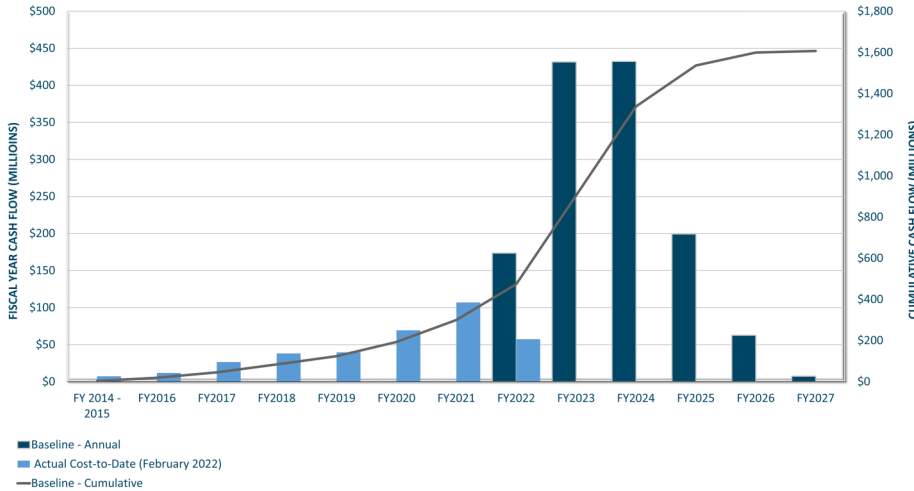
WWSP design and planning began in 2013; the Willamette Water Supply System is expected to be in service by July 2026. Below are the major milestones and activities forecasted from 2022 to 2025*. The WWSP team is committed to on-time delivery. See page 4 for descriptions of the projects referenced below.



*The actual order and duration of projects continues to be refined and is subject to change.

Forecast Cost Summary

The graph below illustrates the projected WWSP cash flow by fiscal year (FY July 1 to June 30)*. The cumulative cash flow establishes the budgeted \$1.6 billion, which accounts for actual and current projected costs, including projected escalation in the cost of labor, materials, and equipment required to build WWSP projects.



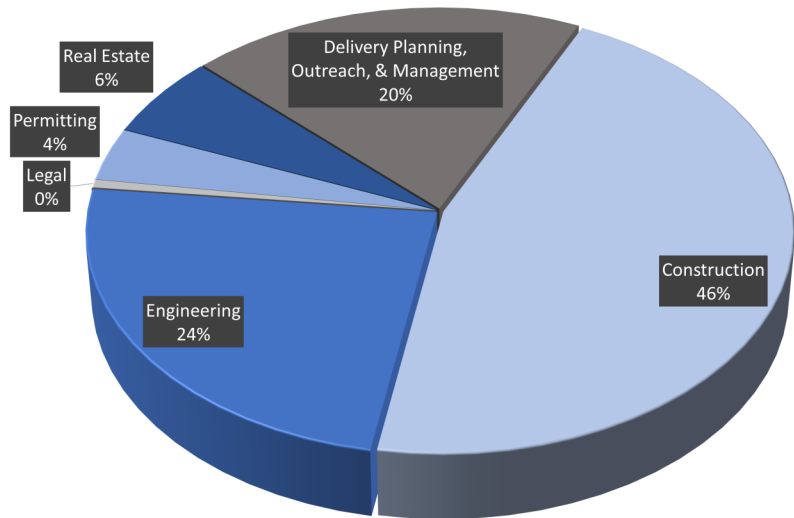
Costs to date for FY 2022 are \$57 million. Cumulative costs are projected to be \$444 million through the end of FY 2022.

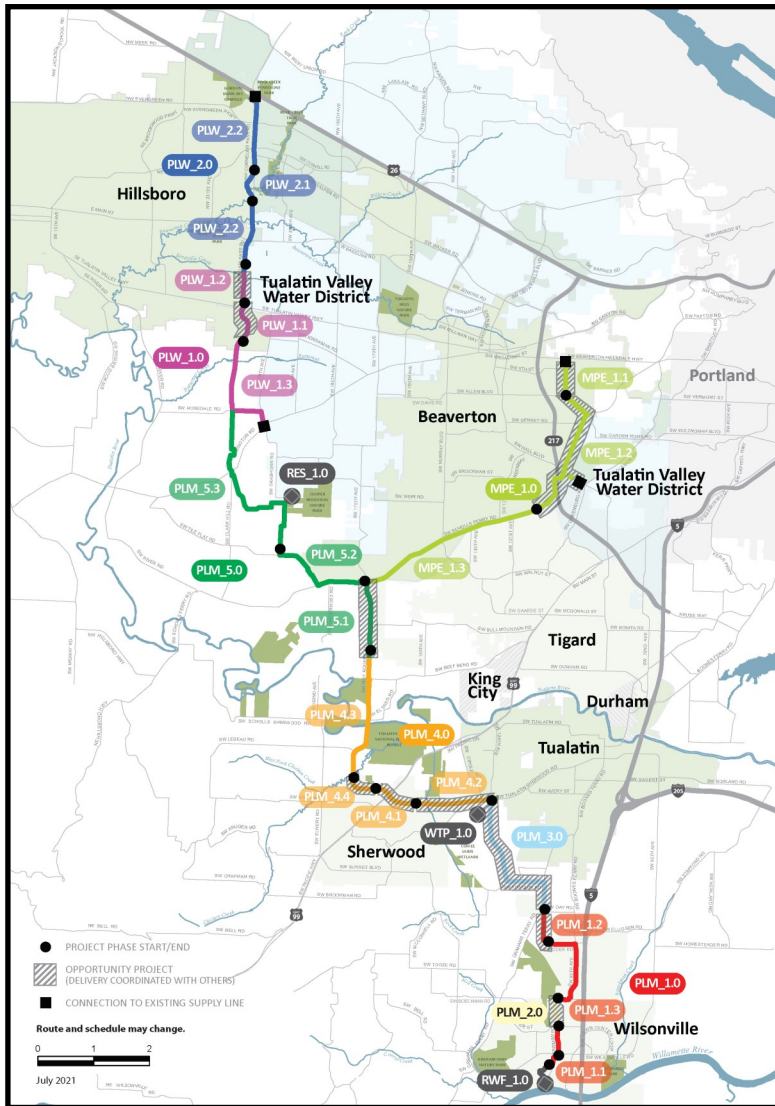
*Current program forecast at completion may vary from baseline cumulative budget due to interim approved changes.

Cumulative Cost Summary

WWSP cumulative costs are tracked and updated monthly. The chart below summarizes the distribution of cumulative costs through February 2022.

Cumulative Water Supply Program costs to date are approximately \$358 million, with the majority spent on planning, engineering, and construction.





PLW_2.0 Cornelius Pass Pipeline Project
(Frances Road to Highway 26)

Description: 3.3-mile water pipeline along Cornelius Pass Rd. from Frances St. to Hwy 26 with Phase 1 consisting of 1/2 mile of pipeline beginning at Orenco Woods Nature Park; connects to existing supply lines for City of Hillsboro and TVWD.

Status: Phase 1: Design Complete; Phase 2: Deferred

PLW_1.0 South Hillsboro Area Pipeline Project
(Farmington Road to Frances Street)

Description: 4-mile water pipeline from SW Farmington Rd. at SW 209th Ave. to Cornelius Pass Rd. at Frances St.

Status: Phase 1: Complete; Phase 2: Construction; Phase 3: Construction

MPE_1.0 Metzger Pipeline East Project
(Roy Rogers Road to Beaverton Hillsdale Hwy)

Description: 7.3-mile water pipeline to be built along SW Scholls Ferry Rd. between SW Roy Rogers Rd. and Allen Blvd.; connects to Metzger service area at SW Oleson Rd. and TVWD's system.

Status: Phase 1: Construction; Phase 2: Construction; Phase 3: Design Complete

RES_1.0 South Beaverton Area Water Storage Tanks (Storage Tanks)

Description: One 15-million gallon storage tank located on Cooper Mountain.

Status: Construction

PLM_5.0 Scholls Area Pipeline Project
(North of Beef Bend Road to Rosedale Road)

Description: 7-mile water pipeline from SW Roy Rogers Rd. 0.5-mile north of SW Beef Bend Rd. to SW Rosedale Rd.

Status: Phase 1: Complete; Phase 2: Complete; Phase 3: Construction

PLM_4.0 Tualatin-Sherwood Area Pipeline Project
(SW 124th Avenue to north of Beef Bend Road)

Description: 5.3-mile water pipeline from 124th Ave. at SW Tualatin Sherwood Rd. along SW Roy Rogers Rd. to 0.5 miles north of SW Beef Bend Rd.

Status: Phase 1: Construction; Phase 2: Design Complete; Phase 3: Construction; Phase 4: Construction

PLM_3.0 124th Avenue Partnership Project
(SW 124th Avenue Extension)

Description: 2.7-mile water pipeline from Grahams Ferry Rd. at Day Rd. to 124th Ave. at SW Tualatin Sherwood Rd.

Status: Complete

PLM_2.0 Kinsman Road Partnership Project
(Kinsman Road Extension)

Description: 0.6-mile water pipeline along Kinsman Rd. between Barber St. and Boeckman Rd.

Status: Complete

PLM_1.0 Wilsonville Area Pipeline Project
(WRWTP to Day Road)

Description: 3.3-mile water pipeline from WRWTP to intersection of SW Garden Acres Rd. at Day Rd.

Status: Phase 1: Complete; Phase 2: Complete; Phase 3: Construction

WTP_1.0 Willamette Water Supply System Water Treatment Plant
(Water Treatment Plant (WTP))

Description: 60-million gallon per day water treatment plant (WTP_1.0), including a finished water pump station (FPS_1.0) and a control system (DCS_1.0) located in Sherwood.

Status: Construction (WTP, FPS, DCS)

RWF_1.0 Raw Water Facilities Expansion
(Raw Water Facilities (RWF) Expansion)

Description: Expansion of the existing raw water pump station and intake at the Willamette River WTP (WRWTP) in Wilsonville to 60 million gallons per day of initial capacity for the Willamette Water Supply System.

Status: Phase 1: Construction; Phase 2: Design Complete

The mid-Willamette River at Wilsonville is the supply source for the WWSS. The system consists of modifying the existing river intake and expanding pumping capacity, building more than 30 miles of drinking water pipeline, reservoir storage facilities on Cooper Mountain, and a new WTP in Sherwood.

For more information about the WWSP, visit www.ourreliablewater.org or call 503.941.4570.