

Our Future Water Supply

The Willamette Water Supply System Commission (WWSS Commission) is an Oregon intergovernmental entity formed by Tualatin Valley Water District (TVWD), the City of Hillsboro, and the City of Beaverton. The WWSS Commission was formed to build the Willamette Water Supply System (WWSS) in response to planned growth in their service areas. TVWD has been designated the Managing Agency for the WWSS Commission, and TVWD operates the Willamette Water Supply Program (WWSP) to plan, design, and construct the WWSS. The WWSS will provide an additional resilient water supply for Washington County. When complete, the WWSS will be one of Oregon's most seismically-resilient water systems—built to better withstand natural disasters, protect public health, and speed regional economic recovery through restoring critical services more quickly. The new system will be completed by 2026.



Willamette Water Supply

Our Reliable Water

SEMI-ANNUAL, Q3/Q4 2021

BUSINESS UTILIZATION REPORT

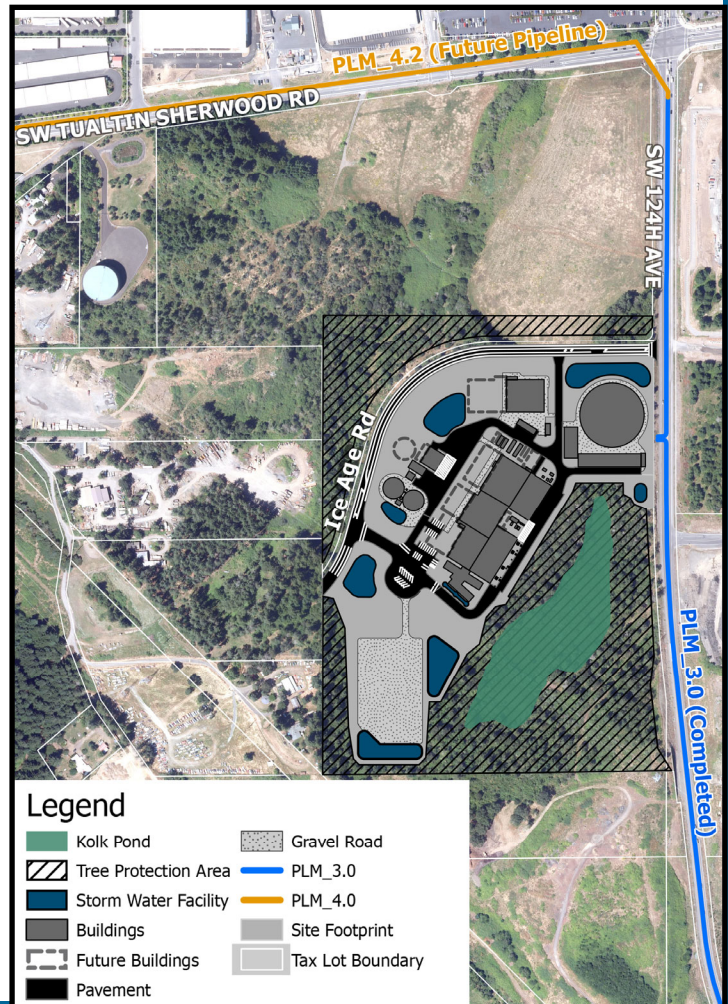
Water Treatment Plant Procurement Awarded

Sundt Construction, Inc., the Construction Manager/General Contractor (CM/GC) for the Willamette Water Supply System's Water Treatment Plant Project (WTP_1.0), finalized Guaranteed Maximum Price 1 (GMP 1). Construction of the new seismically resilient water treatment plant, located in Sherwood near SW 124th Avenue and Tualatin-Sherwood Road, will occur over the next few years.



To develop GMP 1, work was divided into 67 work categories, which provided bidding opportunities for numerous qualified businesses. Approximately 50 new businesses are anticipated to play a role in implementing the work contained in GMP 1. GMP 1 includes erosion control, tree protection, tree removal, earthwork, underground yard piping, temporary electrical, long-lead equipment purchases, structural concrete, structural steel, miscellaneous metals, framing and drywall, flooring, painting, roofing, windows, doors, and hardware, electrical and controls, fire alarm, security, fire sprinkler, HVAC (Heating, Ventilation, and Air Conditioning), plumbing, process piping, process equipment installation, among other needs. A second GMP (GMP 2) for final road construction, landscaping, fencing, and finished water commissioning is anticipated during the second quarter of 2023.

WTP_1.0 will initially produce up to 60 million gallons of water per day (mgd), is designed to expand to a maximum of 120 mgd, and plays a critical role in improving the region's ability to recover after a large earthquake. Construction begins in April 2022 and will continue through March 2026.



Storage Tank and PLM_5.3 Pipeline Procurements Awarded

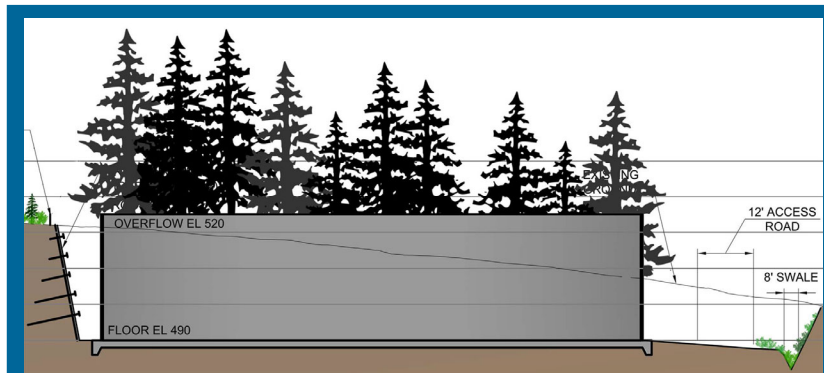
Hoffman-Fowler, LLC, the Construction Manager/General Contractor (CM/GC) for the Willamette Water Supply System's Water Storage Tank (RES_1.0) and Scholls Area Pipeline (PLM_5.3), finalized its GMP for construction and awarded subcontracts.



The storage tank project is located southeast of the SW Grabhorn Road and SW Stonecreek Drive intersection on Cooper Mountain. The GMP includes 24 separate work categories for the upcoming work. Construction began in March and will continue into early 2025. Approximately 23 new businesses are anticipated to play a role in implementing the work contained in the GMP.

Key elements of the work include:

- One 15-million-gallon circular pre-stressed concrete storage reservoir
- Site grading, including extensive rock blasting and excavation
- Soil nail and rock bolt reinforcement walls
- Approximately 21,000 feet of 66-inch diameter welded pipe
- One trenchless crossing approximately 140 feet in length
- Three BPA high voltage overhead transmission line crossings
- Five creek or stream crossings with in-water work window restrictions



RES_1.0 Storage Tank Rendering

Upcoming Procurement Schedule

The following is a list of ongoing and anticipated procurement opportunities:

QUARTER 2 2022

- **Raw Water Facilities Project (RWF_1.0)** Guaranteed Maximum Price 2 (GMP2) CM/GC GMP by Kiewit Infrastructure West Co.
- **Cornelius Pass Road Pipeline Project (PLW_2.1)** Construction Request for Proposal (RFP)

Interested in Doing Business with the WWSP?

Businesses can get involved by:

- 1) Submitting a response to an advertised Request for Proposal (RFP) or Invitation to Bid (ITB) as a qualified prime contractor.
- 2) Becoming a subcontractor or vendor to an existing prime contractor.
- 3) Getting involved with procurements for goods or services for one of the opportunity projects led by a partner agency (such as Washington County) participating with the WWSP.

RFP and ITB opportunities are advertised in the *Daily Journal of Commerce Oregon* and listed on the Business Opportunities page at <http://www.ourreliablewater.org/contracting-opportunities/>

Busy 2022 on Tap for Construction

Though construction has been underway since 2016, construction begins to ramp up in 2022. Several new work areas break ground, and work continues on many other projects. The increase in construction activity presents opportunities for businesses interested in providing goods and services for many contractors performing work. Businesses should contact contractors directly to learn about opportunities.

A directory of businesses awarded work is listed on the Awarded Contracts table at <http://www.ourreliablewater.org/contracting-opportunities/> for the local business community to look up which companies are performing work. In addition, information for the prequalified pipeline contractors can be found at <http://www.ourreliablewater.org/wordpress/wp-content/uploads/2022/03/Pipeline-Business-Opportunities031122.pdf>.

Needs for each project vary, with each contractor selecting their own subcontractors to support construction. Some of the goods and services that will be needed from the business community include, but are not limited to: traffic control, equipment rentals, erosion/sediment control, concrete, welding, fuels and oils, equipment maintenance services, portable toilets, truck drivers, signage, pavement/road construction, and aggregate supplies.

2022 construction includes:

- Complete pipeline installation on PLW_1.3
- Progress construction of RWF_1.0, Phase 2 construction to begin by fall 2022
- Progress pipe installation on PLM_4.1 (in partnership with Washington County), MPE_1.1 (in partnership with City of Beaverton), and MPE_1.2
- Begin construction on the RES_1.0 and WTP_1.0 facility projects
- Break ground on eight pipeline projects that include PLM_1.3, PLM_4.2, PLM_4.3, PLM_4.4, PLM_5.3, PLW_1.2, PLW_2.1, and MPE_1.3



Pipe installation for PLW_1.3

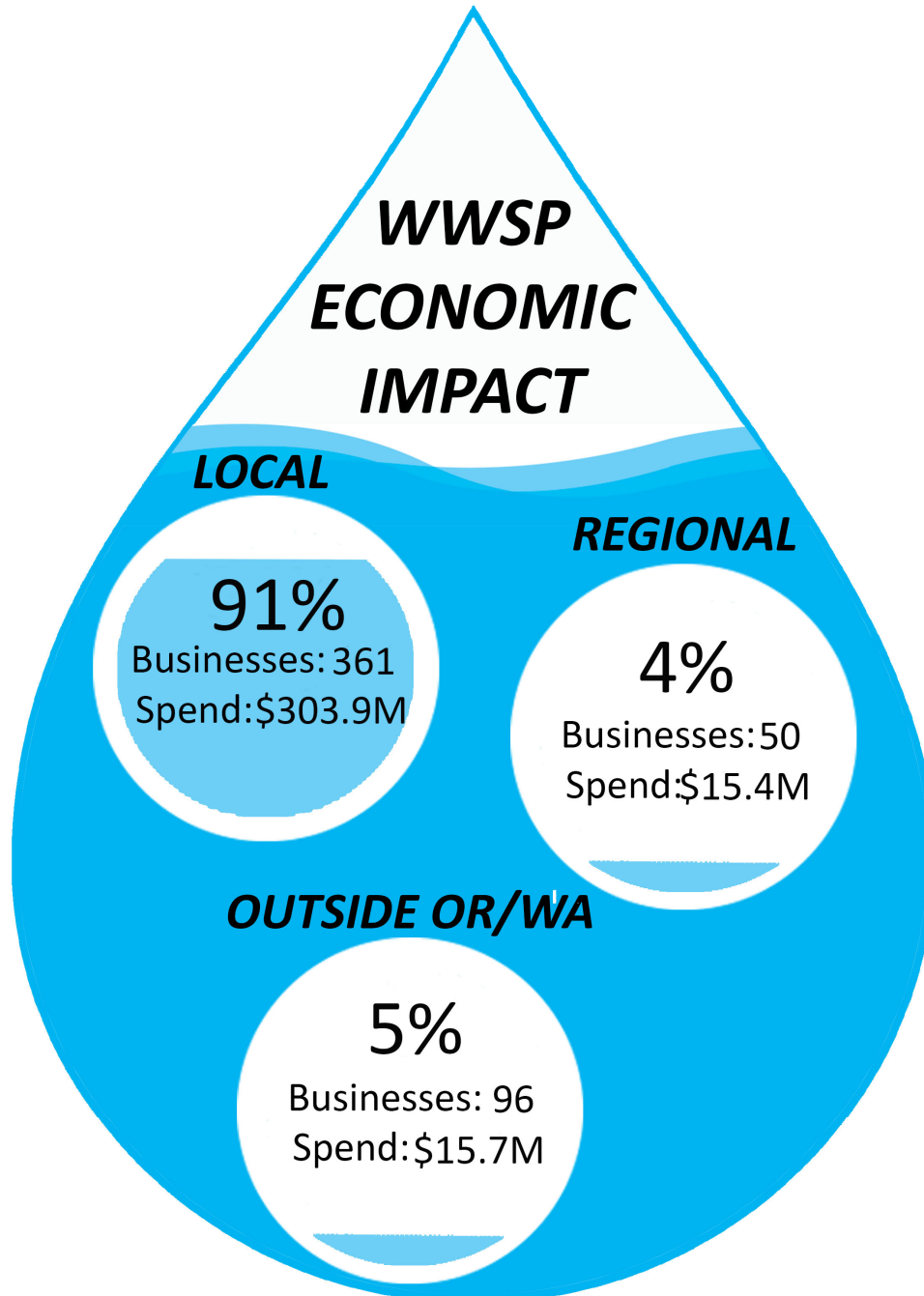
WIFIA Savings Enabling Investment in Area's Economy

The Tualatin Valley Water District (TVWD), City of Hillsboro, and City of Beaverton estimate saving more than \$435 million through the US Environmental Protection Agency (EPA) Water Infrastructure Finance and Innovation Act (WIFIA) loan program. The WIFIA loans support capital investments to help advance projects that will deliver significant public health and environmental benefits while also saving ratepayers money, supporting the local economy, and creating jobs.

TVWD and City of Hillsboro loans support construction for the Willamette Water Supply System. In addition, the City of Beaverton has secured WIFIA funding to support portions of its WWSS needs along with other water system improvements throughout the city. These federal loans have benefits over traditional borrowing methods (e.g., bonds), such as flexible terms that include lower interest rates and fees, a 35-year payback period, a longer interest-only period, and funds available for managing changes.

WWSP Economic Contribution Summary

The WWSP is positively contributing to the Oregon and Washington regional economy with more than \$319 million spent to date. Approximately 361 local businesses (located in counties within 50 miles of the WWSP project site) and 50 regional businesses (located outside the local area but within Oregon or Washington) have participated in the WWSP. The 96 other businesses that are located outside Oregon and Washington are also contributing a positive effect on the local economy, as many of their employees live and work in the local area and generate local benefits through the purchase of goods, services, and other activities.



Data through Q4 2021