

Our Future Water Supply

The Willamette Water Supply System Commission (WWSS Commission) is an Oregon intergovernmental entity formed by Tualatin Valley Water District (TVWD), the City of Hillsboro, and the City of Beaverton. The WWSS Commission was formed to build the Willamette Water Supply System (WWSS) in response to planned growth in their service areas. TVWD has been designated the Managing Agency for the WWSS Commission, and TVWD operates the Willamette Water Supply Program (WWSP) to plan, design, and construct the WWSS. The WWSS will provide an additional resilient water supply for Washington County. When complete, the WWSS will be one of Oregon’s most seismically-resilient water systems—built to better withstand natural disasters, protect public health, and speed regional economic recovery through restoring critical services more quickly. The new system will be completed by 2026.

Willamette Water Supply *Monthly Progress Report*

Our Reliable Water

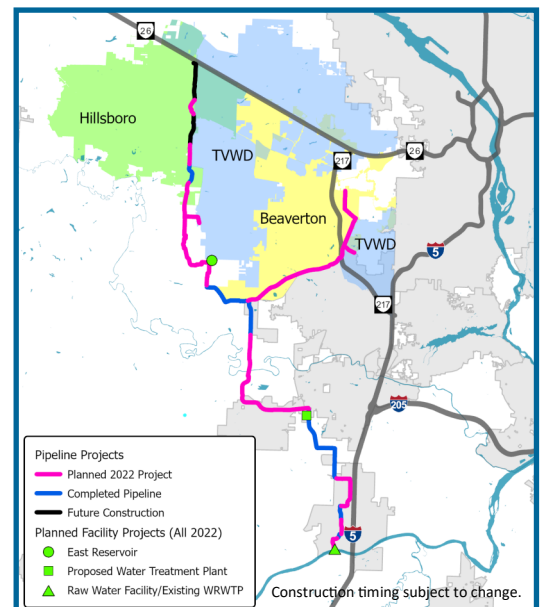
Month End January 2022

WWSS Construction Front and Center in 2022

In 2022, Willamette Water Supply System (WWSS) activities will focus almost entirely on construction as design efforts wrap up on a few remaining projects. Below is an overview of some of the planned activities and milestones for this year (See page 4 for descriptions of the projects referenced below):

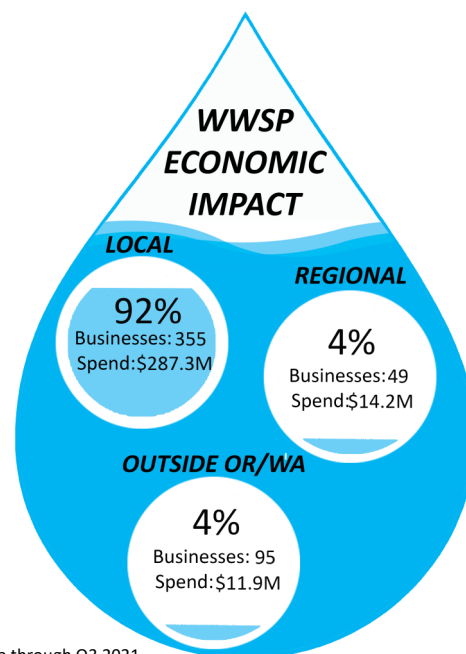
- Complete pipeline installation on PLW_1.3 (approximately 10,800 linear feet of pipe).
- Progress construction of RWF_1.0 (Phase 1 complete in spring 2022; Phase 2 construction to begin by fall 2022).
- Progress pipe installation on three projects: PLM_4.1 (in partnership with Washington County), MPE_1.1 (in partnership with City of Beaverton), and MPE_1.2.
- Begin construction on two facility projects: RES_1.0 and WTP_1.0.
- Begin construction on eight pipeline projects: PLM_1.3, PLM_4.2*, PLM_4.3, PLM_4.4*, PLM_5.3, PLW_1.2*, PLW_2.1, and MPE_1.3.
- Continue real estate acquisitions, land use, permitting, and community outreach.

*Washington County partnership project



2022 continuing and planned construction

WWSP Economic Contribution Summary



Data through Q3 2021

The WWSP is positively contributing to the local and regional economy with over \$301.5 million spent through Q3 2021. Approximately 355 local businesses (located in counties within 50 miles of the WWSP project site) and 49 regional businesses (located outside the local area but within Oregon and Washington) have provided goods and services to the program. The 95 other businesses that are located outside Oregon and Washington are also contributing to the local economy, as many of their employees live and work in the local area and generate local benefits through the purchase of goods, services, and other activities.

Procurement & Business Opportunities

The WWSP staff are preparing for several upcoming professional services and construction contractor procurements. Listed below are active procurements and upcoming events and procurements. Procurement opportunities are also published at <http://www.ourreliablewater.org/business-opportunities>.

Current Procurements

- N/A

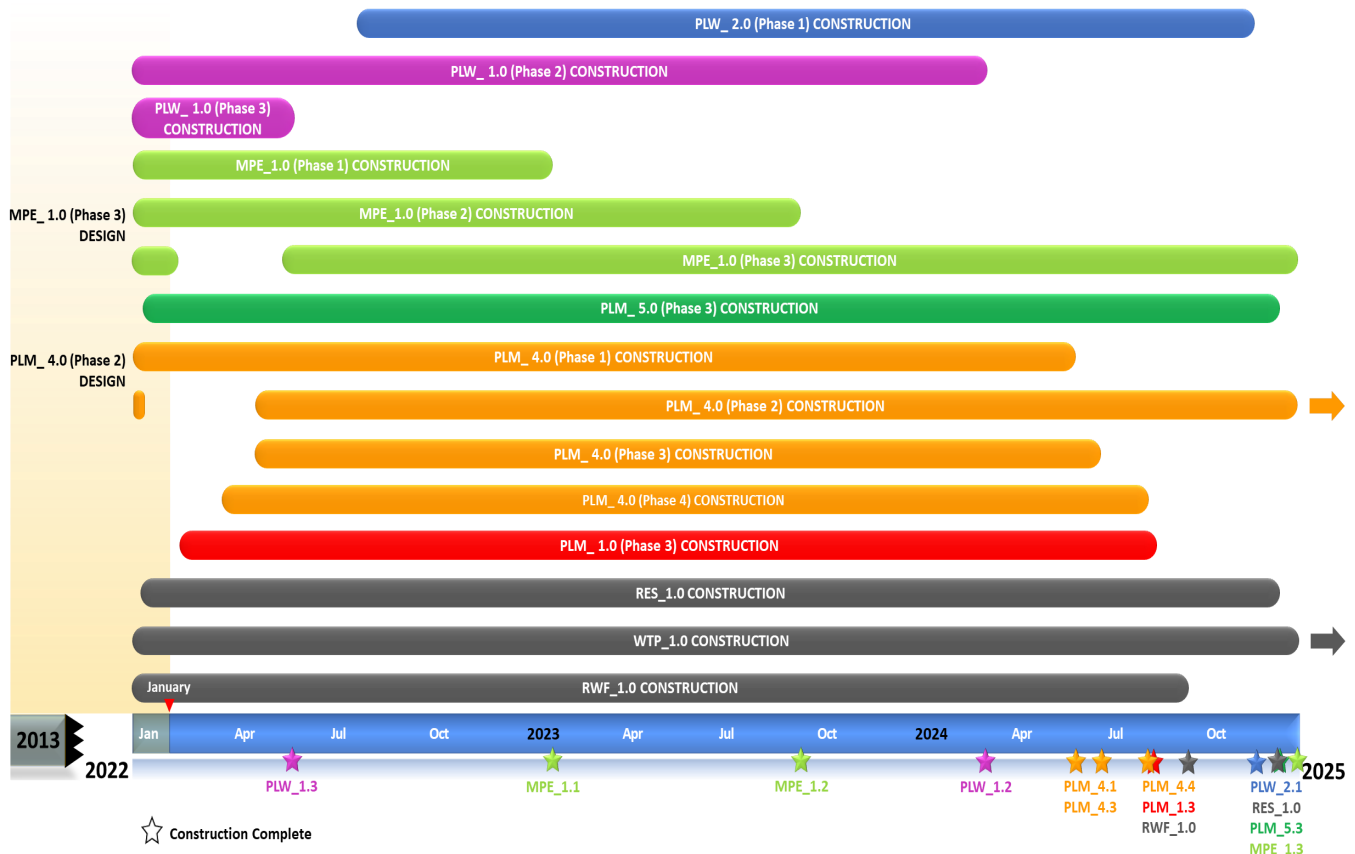
Upcoming Procurements

- PLM_4.2 Invitation to Bid (ITB) for Construction* (Quarter 1, 2022)
- MPE_1.3 ITB for Construction (Quarter 1, 2022)
- RWF_1.0 Guaranteed Maximum Price 2 (GMP 2) for Construction Manager/General Contractor (CMGC) (Quarter 2, 2022)
- PLW_2.1 Request for Proposal (RFP) for Construction (Quarter 2, 2022)

*by Washington County

Schedule Summary

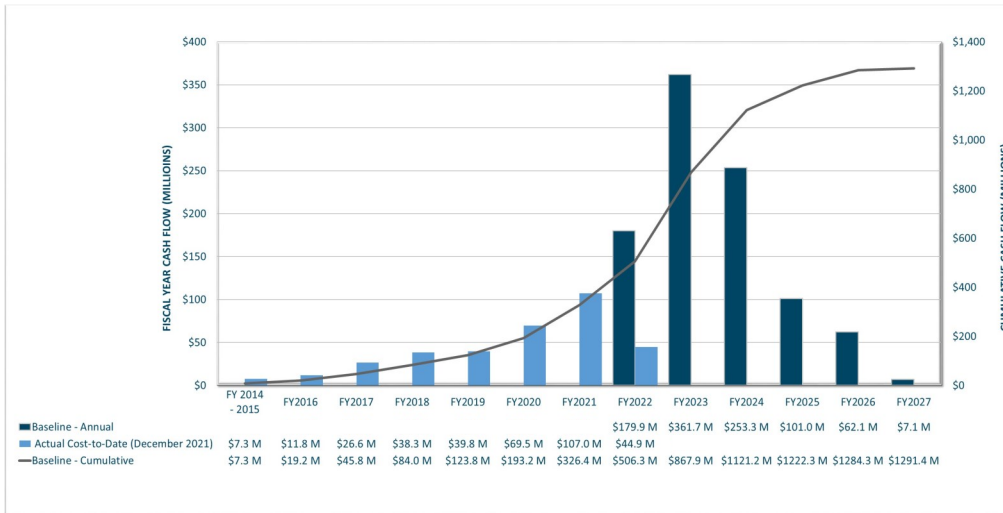
WWSP design and planning began in 2013; the Willamette Water Supply System is expected to be in service by July 2026. Below are the major milestones and activities forecasted from 2022 to 2025*. The WWSP team is committed to on-time delivery. See page 4 for descriptions of the projects referenced below.



*The actual order and duration of projects continues to be refined and is subject to change.

Forecast Cost Summary

The graph below illustrates the projected WWSP cash flow by fiscal year (FY July 1 to June 30)*. The cumulative cash flow establishes the budgeted \$1.3 billion, which accounts for actual and current projected costs, including projected escalation in the cost of labor, materials, and equipment required to build WWSP projects.



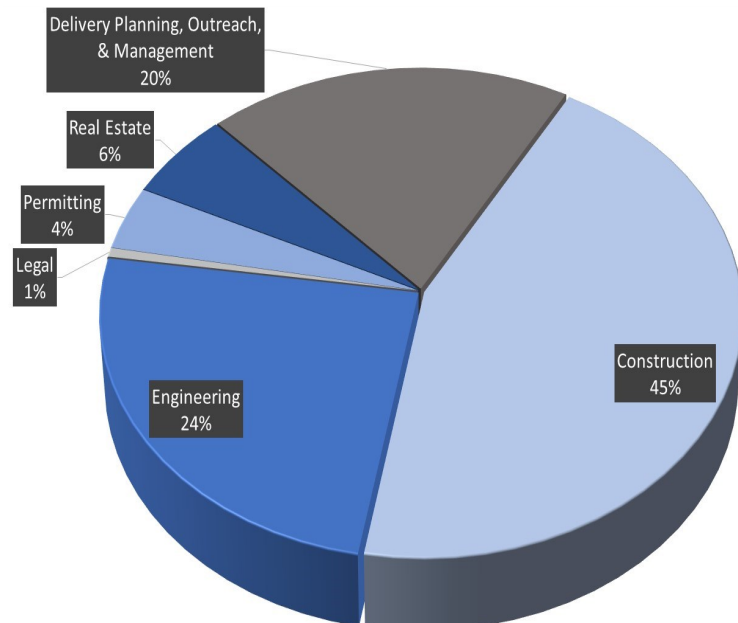
Costs to date for FY 2022 are \$45 million. Cumulative costs are projected to be \$480 million through the end of FY 2022.

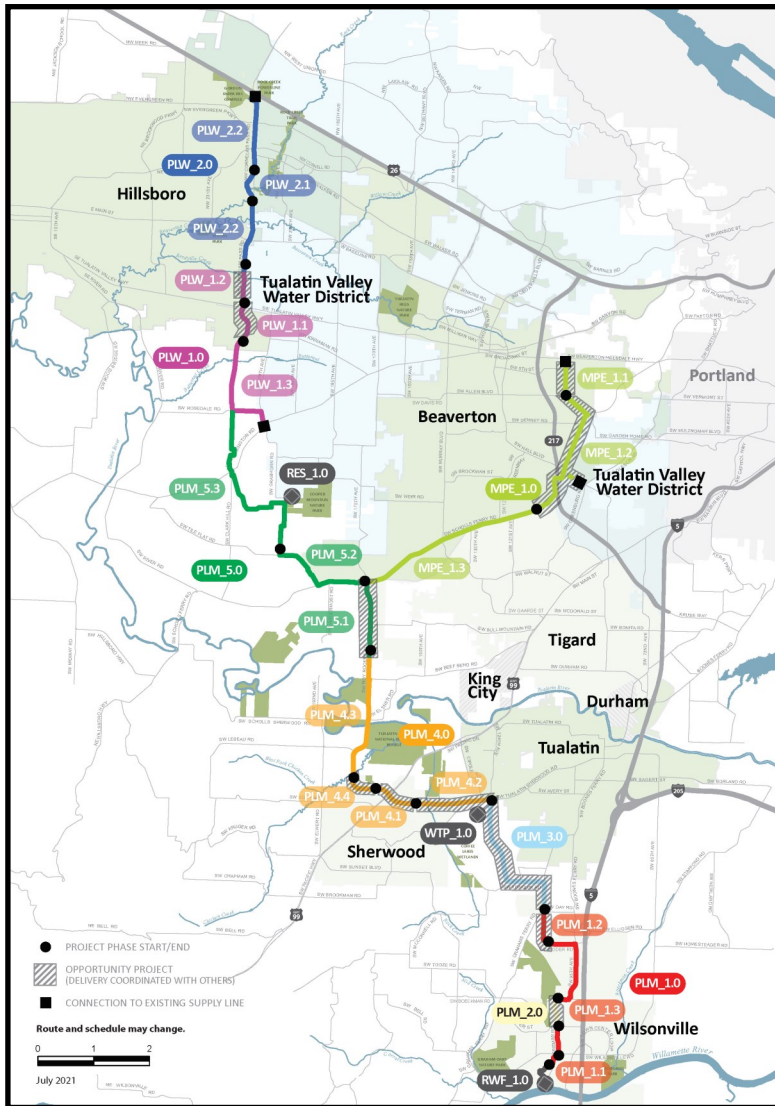
*Current program forecast at completion may vary from baseline cumulative budget due to interim approved changes.

Cumulative Cost Summary

WWSP cumulative costs are tracked and updated monthly. The chart below summarizes the distribution of cumulative costs through December 2021.

Cumulative Water Supply Program costs to date are approximately \$345 million, with the majority spent on planning, engineering, and construction.





PLW_2.0 Cornelius Pass Pipeline Project
(Frances Road to Highway 26)

Description: 3.3-mile water pipeline along Cornelius Pass Rd. from Frances St. to Hwy 26 with Phase 1 consisting of 1/2 mile of pipeline beginning at Orenco Woods Nature Park; connects to existing supply lines for City of Hillsboro and TVWD.

Status: Phase 1: Design Complete; Phase 2: Deferred

PLW_1.0 South Hillsboro Area Pipeline Project
(Farmington Road to Frances Street)

Description: 4-mile water pipeline from SW Farmington Rd. at SW 209th Ave. to Cornelius Pass Rd. at Frances St.

Status: Phase 1: Complete; Phase 2: Construction; Phase 3: Construction

MPE_1.0 Metzger Pipeline East Project
(Roy Rogers Road to Beaverton Hillsdale Hwy)

Description: 7.3-mile water pipeline to be built along SW Scholls Ferry Rd. between SW Roy Rogers Rd. and Allen Blvd.; connects to Metzger service area at SW Oleson Rd. and TVWD's system.

Status: Phase 1: Construction; Phase 2: Construction; Phase 3: Design

RES_1.0 South Beaverton Area Water Storage Tanks (Storage Tanks)

Description: One 15-million gallon storage tank located on Cooper Mountain.

Status: Construction

PLM_5.0 Scholls Area Pipeline Project
(North of Beef Bend Road to Rosedale Road)

Description: 7-mile water pipeline from SW Roy Rogers Rd. 0.5-mile north of SW Beef Bend Rd. to SW Rosedale Rd. at SW 209th Ave.

Status: Phase 1: Complete; Phase 2: Complete; Phase 3: Construction

PLM_4.0 Tualatin-Sherwood Area Pipeline Project
(SW 124th Avenue to north of Beef Bend Road)

Description: 5.2-mile water pipeline from 124th Ave. at SW Tualatin Sherwood Rd. along SW Roy Rogers Rd. to 0.5 miles north of SW Beef Bend Rd.

Status: Phase 1: Construction; Phase 2: Design Complete; Phase 3: Design Complete; Phase 4: Design Complete

PLM_3.0 124th Avenue Partnership Project
(SW 124th Avenue Extension)

Description: 2.7-mile water pipeline from Grahams Ferry Rd. at Day Rd. to 124th Ave. at SW Tualatin Sherwood Rd.

Status: Complete

PLM_2.0 Kinsman Road Partnership Project
(Kinsman Road Extension)

Description: 0.6-mile water pipeline along Kinsman Rd. between Barber St. and Boeckman Rd.

Status: Complete

PLM_1.0 Wilsonville Area Pipeline Project
(WRWTP to Day Road)

Description: 3.3-mile water pipeline from WRWTP to intersection of SW Garden Acres Rd. at Day Rd.

Status: Phase 1: Complete; Phase 2: Complete; Phase 3: Design Complete

WTP_1.0 Willamette Water Supply System Water Treatment Plant
(Water Treatment Plant (WTP))

Description: 60-million gallon per day water treatment plant (WTP_1.0), including a finished water pump station (FPS_1.0) and a control system (DCS_1.0) located in Sherwood.

Status: Construction (WTP, FPS, DCS)

RWF_1.0 Raw Water Facilities Expansion
(Raw Water Facilities (RWF) Expansion)

Description: Expansion of the existing raw water pump station and intake at the Willamette River WTP (WRWTP) in Wilsonville to 60 million gallons per day of initial capacity for the Willamette Water Supply System.

Status: Phase 1: Construction; Phase 2: Design Complete

The mid-Willamette River at Wilsonville is the supply source for the WWSS. The system consists of modifying the existing river intake and expanding pumping capacity, building more than 30 miles of drinking water pipeline, reservoir storage facilities on Cooper Mountain, and a new WTP in Sherwood.

For more information about the WWSP, visit www.ourreliablewater.org or call 503.941.4570.