

Our Future Water Supply

The Willamette Water Supply System Commission (WWSS Commission) is an Oregon intergovernmental entity formed by Tualatin Valley Water District (TVWD), the City of Hillsboro, and the City of Beaverton. The WWSS Commission was formed to build the Willamette Water Supply System (WWSS) in response to planned growth in their service areas. TVWD has been designated the Managing Agency for the WWSS Commission, and TVWD operates the Willamette Water Supply Program (WWSP) to plan, design, and construct the WWSS. The WWSS will provide an additional resilient water supply for Washington County. When complete, the WWSS will be one of Oregon's most seismically-resilient water systems—built to better withstand natural disasters, protect public health, and speed regional economic recovery through restoring critical services more quickly. The new system will be completed by 2026.

Willamette Water Supply *Monthly Progress Report*

Our Reliable Water

Month End **November 2021**

Willamette Intake Facilities Commission Tours

In 2018, the Willamette Intake Facilities (WIF) Commission was established among Tualatin Valley Water District and the cities of Hillsboro, Beaverton, Sherwood, Tigard, and Wilsonville. The Commission is responsible for oversight of construction, management, and operation of the WIF system in a prudent, economic, and efficient manner.

The WIF system includes the fish screens, intake pipe, caisson, pump station building, and other jointly owned equipment in or near the Willamette River at the existing Willamette River Water Treatment Plant in Wilsonville. These WIF components are the starting point for the Willamette Water Supply System (WWSS), and construction is occurring to improve these as part of the Raw Water Facilities (RWF_1.0) project.

In December 2020, Willamette Water Supply Program (WWSP) staff conducted a video tour of the RWF_1.0 project site to provide a glimpse into the construction of seismic resiliency measures. The tour highlighted construction activities at the end of 2020 and profiled the massive riverbank stabilization effort to protect the regional water intake from a future seismic event. The video tour was presented to the WIF Commission Board at its October 2021 meeting (accessible via

YouTube at <https://youtu.be/ITdtMrbZRIE>), and to the public shortly thereafter on the Program website www.ourreliablewater.org to help educate the public about this important work.

In October 2021, a second COVID-compliant video tour of the RWF_1.0 project was conducted and then shown to the WIF Commission at its Board meeting on October 25, 2021. The video tour (accessible via YouTube at <https://youtu.be/aCoWh09Lptl>) highlights the replacement of the intake screens and structural work that will increase the reliability and resiliency of the WIF. The WIF provides for the safe and reliable drawing of water from the Willamette River. It is the source of raw water for the Willamette River Water Treatment Plant now (which serves Wilsonville and Sherwood), and for the Willamette Water Supply System in the future.



WIF Commission riverbank stabilization tour



WIF Commission intake/RWF_1.0 tour

The video is on the Program website at www.ourreliablewater.org to inform the public of the important seismic resiliency work that is critical to meeting our mission of providing a reliable and resilient water supply to our customers. The video also contains a brief summary of the regional water supply planning and coordination efforts happening among the WIF Commission members.

Procurement & Business Opportunities

The WWSP staff are preparing for several upcoming professional services and construction contractor procurements. Listed below are active procurements and upcoming events and procurements. Procurement opportunities are also published at <http://www.ourreliablewater.org/business-opportunities>.

Current Procurements

- PLW_1.2 Invitation to Bid (ITB) for Construction*

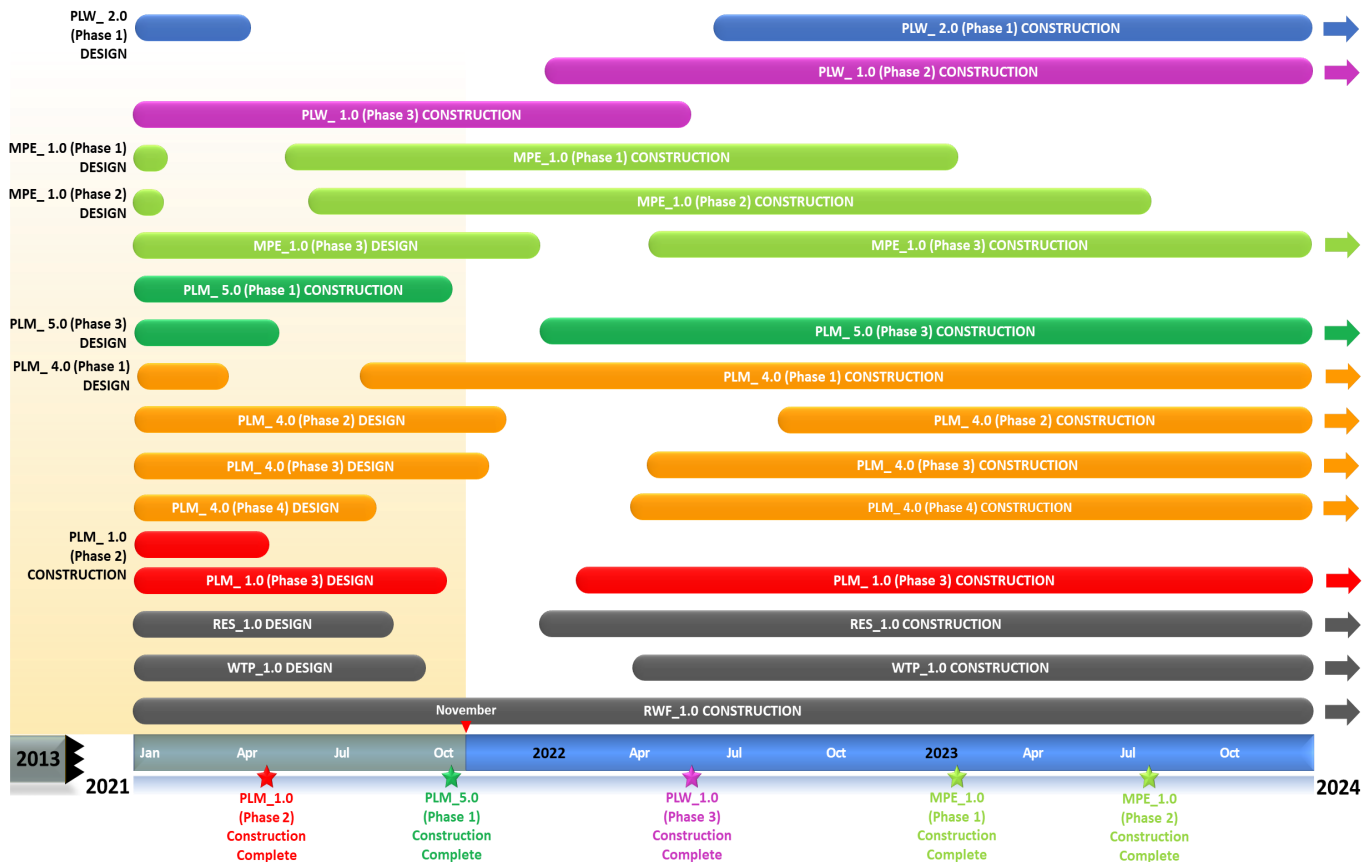
Upcoming Procurements

- PLM_4.4 ITB for Construction* (Quarter 4, 2021)
- PLM_1.3 Request for Proposal (RFP) for Construction (Quarter 4, 2021)
- PLM_4.3 ITB for Construction (Quarter 4, 2021)

*by Washington County

Schedule Summary

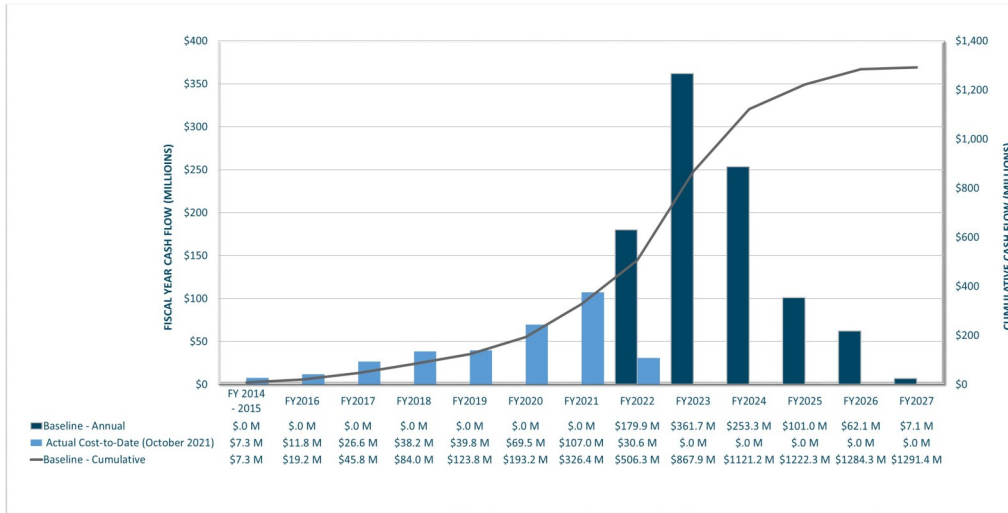
WWSP design and planning began in 2013; the Willamette Water Supply System is expected to be in service by July 2026. Below are the major milestones and activities forecasted from 2021 to 2024*. The WWSP team is committed to on-time delivery. See page 4 for descriptions of the projects referenced below.



*The actual order and duration of projects continues to be refined and is subject to change.

Forecast Cost Summary

The graph below illustrates the projected WWSP cash flow by fiscal year (FY July 1 to June 30)*. The cumulative cash flow establishes the budgeted \$1.3 billion, which accounts for actual and current projected costs, including projected escalation in the cost of labor, materials, and equipment required to build WWSP projects.



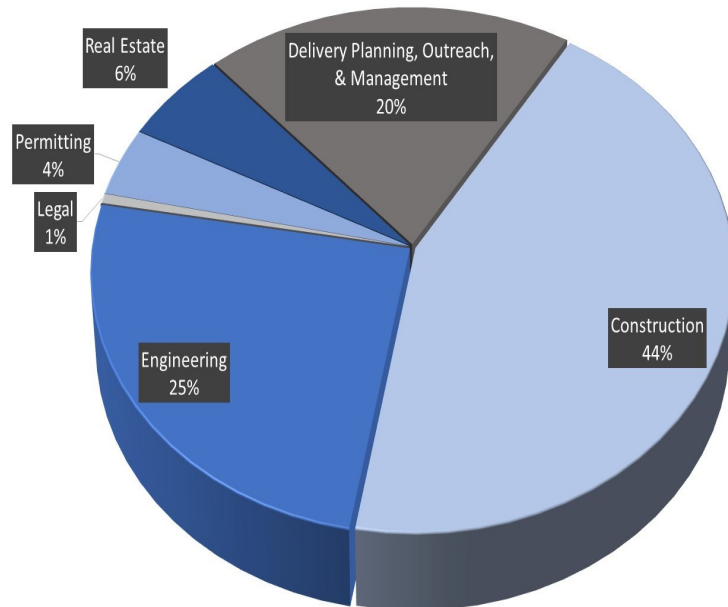
Costs to date for FY 2022 are \$31 million. Cumulative costs are projected to be \$480 million through the end of FY 2022.

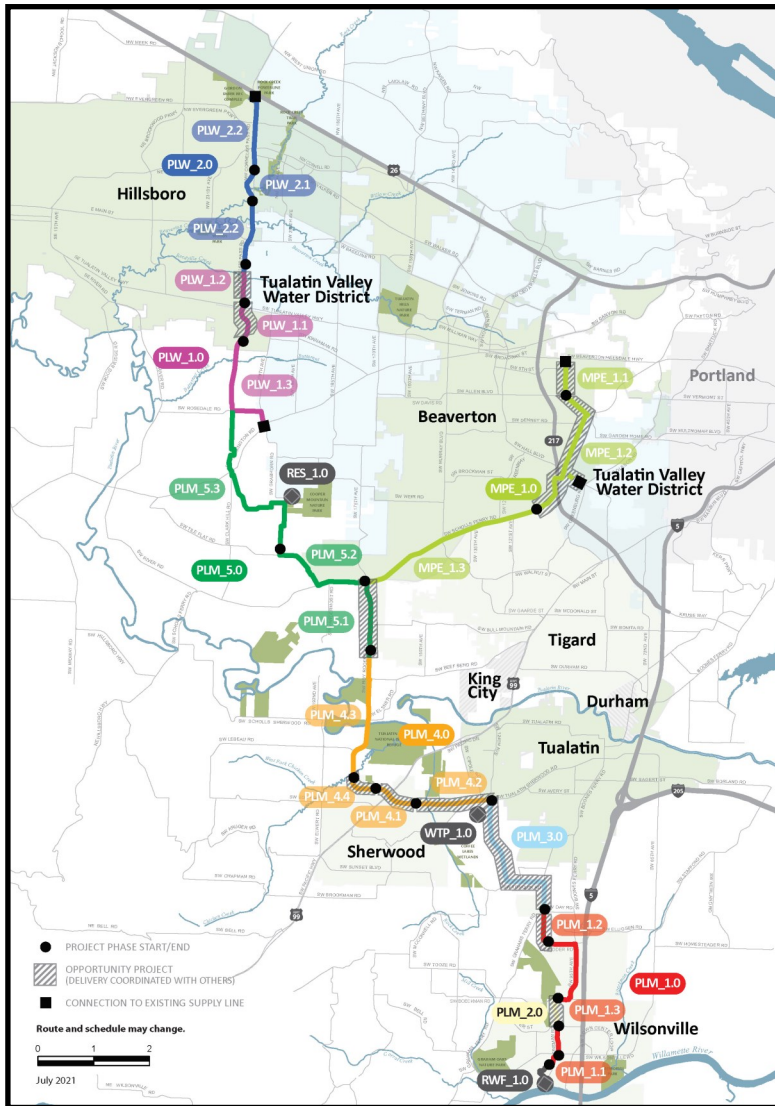
*Current program forecast at completion may vary from baseline cumulative budget due to interim approved changes.

Cumulative Cost Summary

WWSP cumulative costs are tracked and updated monthly. The chart below summarizes the distribution of cumulative costs through October 2021.

Cumulative Water Supply Program costs to date are approximately \$331 million, with the majority spent on planning, engineering, and construction.





PLW_2.0 Cornelius Pass Pipeline Project
(Frances Road to Highway 26)

Description: 3.3-mile water pipeline along Cornelius Pass Rd. from Frances St. to Hwy 26 with Phase 1 consisting of 1/2 mile of pipeline beginning at Orenco Woods Nature Park; connects to existing supply lines for City of Hillsboro and TVWD.

Status: Phase 1: Design Complete; Phase 2: Deferred

PLW_1.0 South Hillsboro Area Pipeline Project
(Farmington Road to Frances Street)

Description: 4-mile water pipeline from SW Farmington Rd. at SW 209th Ave. to Cornelius Pass Rd. at Frances St.

Status: Phase 1: Complete; Phase 2: Design Complete; Phase 3: Construction

MPE_1.0 Metzger Pipeline East Project
(Roy Rogers Road to Beaverton Hillsdale Hwy)

Description: 7.3-mile water pipeline to be built along SW Scholls Ferry Rd. between SW Roy Rogers Rd. and Allen Blvd.; connects to Metzger service area at SW Oleson Rd. and TVWD's system.

Status: Phase 1: Construction; Phase 2: Construction; Phase 3: Design

RES_1.0 South Beaverton Area Water Storage Tanks (Storage Tanks)

Description: One 15-million gallon storage tank located on Cooper Mountain.

Status: Design Complete

PLM_5.0 Scholls Area Pipeline Project
(North of Beef Bend Road to Rosedale Road)

Description: 7-mile water pipeline from SW Roy Rogers Rd. 0.5-mile north of SW Beef Bend Rd. to SW Rosedale Rd. at SW 209th Ave.

Status: Phase 1: Construction; Phase 2: Complete; Phase 3: Design Complete

PLM_4.0 Tualatin-Sherwood Area Pipeline Project
(SW 124th Avenue to north of Beef Bend Road)

Description: 5.2-mile water pipeline from 124th Ave. at SW Tualatin Sherwood Rd. along SW Roy Rogers Rd. to 0.5 miles north of SW Beef Bend Rd.

Status: Phase 1: Construction; Phase 2: Design; Phase 3: Design; Phase 4: Design Complete

PLM_3.0 124th Avenue Partnership Project
(SW 124th Avenue Extension)

Description: 2.7-mile water pipeline from Grahams Ferry Rd. at Day Rd. to 124th Ave. at SW Tualatin Sherwood Rd.

Status: Complete

PLM_2.0 Kinsman Road Partnership Project
(Kinsman Road Extension)

Description: 0.6-mile water pipeline along Kinsman Rd. between Barber St. and Boeckman Rd.

Status: Complete

PLM_1.0 Wilsonville Area Pipeline Project
(WRWTP to Day Road)

Description: 3.3-mile water pipeline from WRWTP to intersection of SW Garden Acres Rd. at Day Rd.

Status: Phase 1: Complete; Phase 2: Complete; Phase 3: Design Complete

WTP_1.0 Willamette Water Supply System Water Treatment Plant
(Water Treatment Plant (WTP))

Description: 60-million gallon per day water treatment plant (WTP_1.0), including a finished water pump station (FPS_1.0) and a control system (DCS_1.0) located in Sherwood.

Status: Design Complete (WTP, FPS, DCS)

RWF_1.0 Raw Water Facilities Expansion
(Raw Water Facilities (RWF) Expansion)

Description: Expansion of the existing raw water pump station and intake at the Willamette River WTP (WRWTP) in Wilsonville to 60 million gallons per day of initial capacity for the Willamette Water Supply System.

Status: Phase 1: Construction; Phase 2: Design Complete

The mid-Willamette River at Wilsonville is the supply source for the WWSS. The system consists of modifying the existing river intake and expanding pumping capacity, building more than 30 miles of drinking water pipeline, reservoir storage facilities on Cooper Mountain, and a new WTP in Sherwood.

For more information about the WWSP, visit www.ourreliablewater.org or call 503.941.4570.