

Our Future Water Supply

The Willamette Water Supply System Commission (WWSS Commission) is an Oregon intergovernmental entity formed by Tualatin Valley Water District (TVWD), the City of Hillsboro, and the City of Beaverton. The WWSS Commission was formed to build the Willamette Water Supply System (WWSS) in response to planned growth in their service areas. TVWD has been designated the Managing Agency for the WWSS Commission, and TVWD operates the Willamette Water Supply Program (WWSP) to plan, design, and construct the WWSS. The WWSS will provide an additional resilient water supply for Washington County. When complete, the WWSS will be one of Oregon's most seismically-resilient water systems—built to better withstand natural disasters, protect public health, and speed regional economic recovery through restoring critical services more quickly. The new system will be completed by 2026.

Willamette Water Supply *Monthly Progress Report*

Our Reliable Water

Month End September 2021

WWSS Raw Water Facilities diving operations

The Willamette Water Supply System (WWSS) Raw Water Facilities (RWF_1.0) project will modify the existing raw water pump station and intake infrastructure at the Willamette River Water Treatment Plant (WRWTP) in Wilsonville. Pre-construction activities commenced with Harbor Offshore, a subcontractor to Kiewit Infrastructure West, Co., wherein a pre-activity meeting was held. The meeting provided the project team (which includes WWSS staff and contractors, Veolia, City of Wilsonville staff, and others) an overview of the upcoming, time-sensitive work within the Willamette River, including anticipated timeframe, risks, and required coordination with the U.S. Coast Guard, Clackamas County, and the City of Wilsonville.

During the mid-September Willamette River in-water-work window, Harbor Offshore will replace the existing fish screens on the Willamette Intake Facilities intake and install new steel protection piles. The new screens will allow additional water to be withdrawn from the Willamette River to accommodate the planned WWSS capacity while protecting fish.

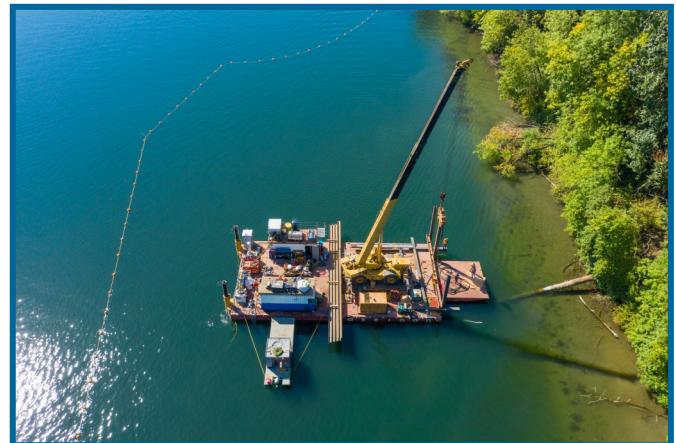
The protection piles will be installed in the riverbed from a barge-mounted crane moored in the river and will protect the screens from trees and other floating debris. This work will be noisy, may cause vibration noticeable to neighbors, and require boat traffic to be diverted around the work zone.

Harbor Offshore mobilized to the site in early September and the work is anticipated to take several weeks to complete.



In mid-September, Harbor Offshore mobilized a barge adjacent to the intake structure and set up a buoy boundary. A dive station and fuel equipment were also set up for daily activities.

Aerial view of the Harbor Offshore barge installing fish screen protection piles



Procurement & Business Opportunities

The WWSP staff are preparing for several upcoming professional services and construction contractor procurements. Listed below are active procurements and upcoming events and procurements. Procurement opportunities are also published at <http://www.ourreliablewater.org/business-opportunities>.

Current Procurements

- WTP_1.0 Guaranteed Maximum Price (GMP) for Construction (Quarter 3, 2021)

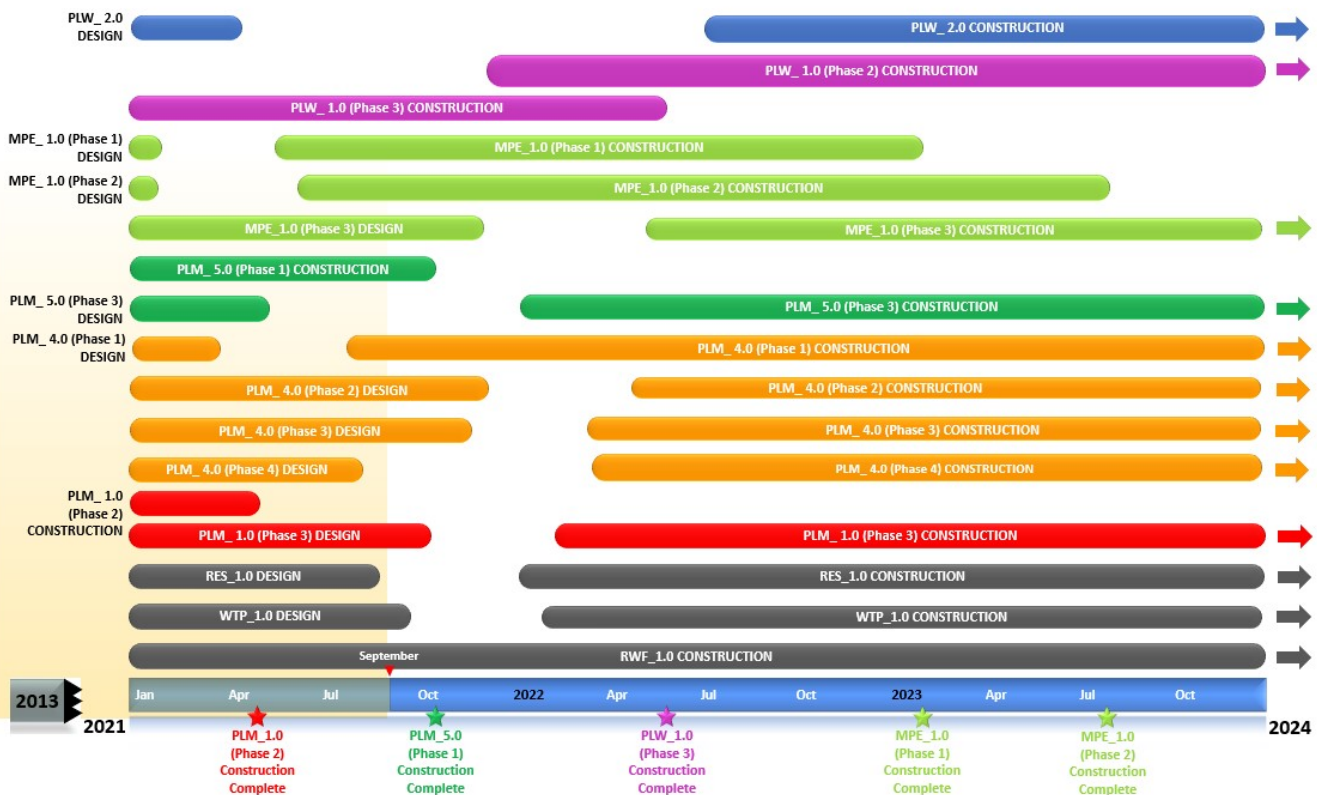
Upcoming Procurements

- PLM_4.4 Invitation to Bid (ITB) for Construction* (Quarter 4, 2021)
- PLM_1.3 Request for Proposal (RFP) for Construction (Quarter 4, 2021)
- PLW_1.2 ITB for Construction* (Quarter 4, 2021)
- PLM_4.3 ITB for Construction (Quarter 4, 2021)

*by Washington County

Schedule Summary

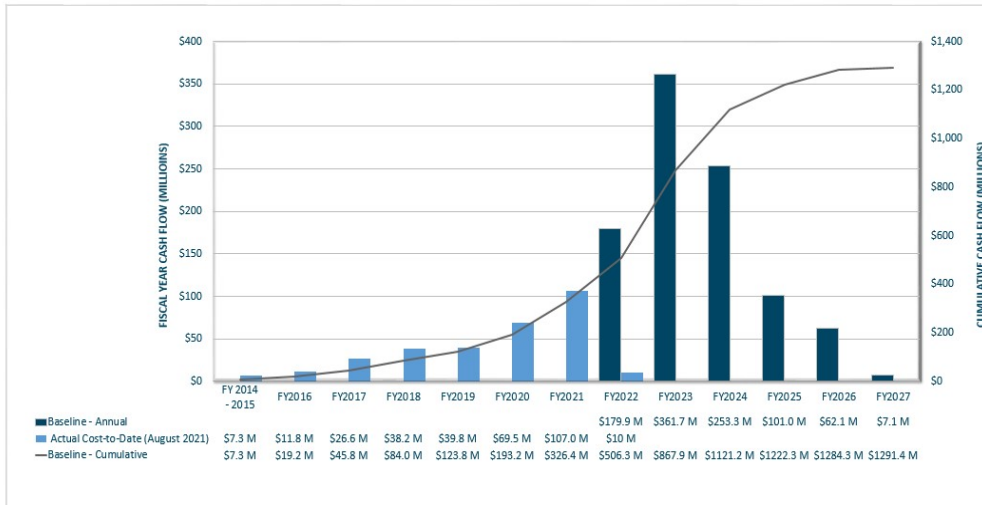
WWSP design and planning began in 2013; the Willamette Water Supply System is expected to be in service by July 2026. Below are the major milestones and activities forecasted from 2021 to 2024*. The WWSP team is committed to on-time delivery. See page 4 for descriptions of the projects referenced below.



*The actual order and duration of projects continues to be refined and is subject to change.

Forecast Cost Summary

The graph below illustrates the projected WWSP cash flow by fiscal year (FY July 1 to June 30)*. The cumulative cash flow establishes the budgeted \$1.3 billion, which accounts for actual and current projected costs, including projected escalation in the cost of labor, materials, and equipment required to build WWSP projects.



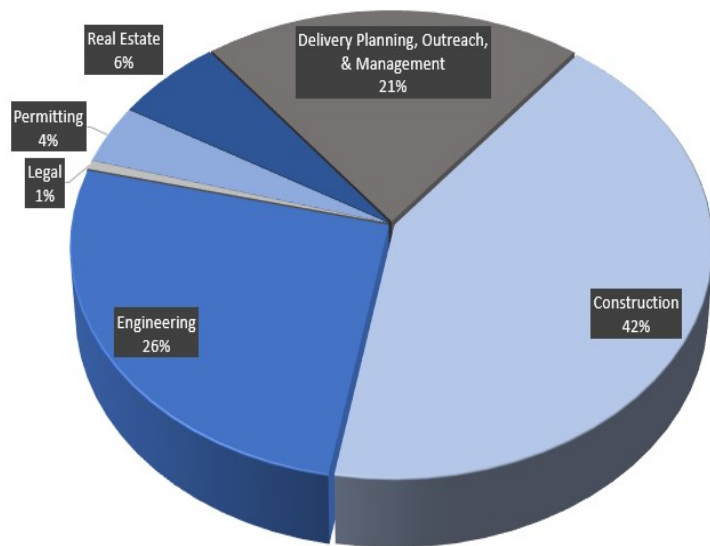
Costs to date for FY 2022 are \$10 million. Cumulative costs are projected to be \$480 million through the end of FY 2022.

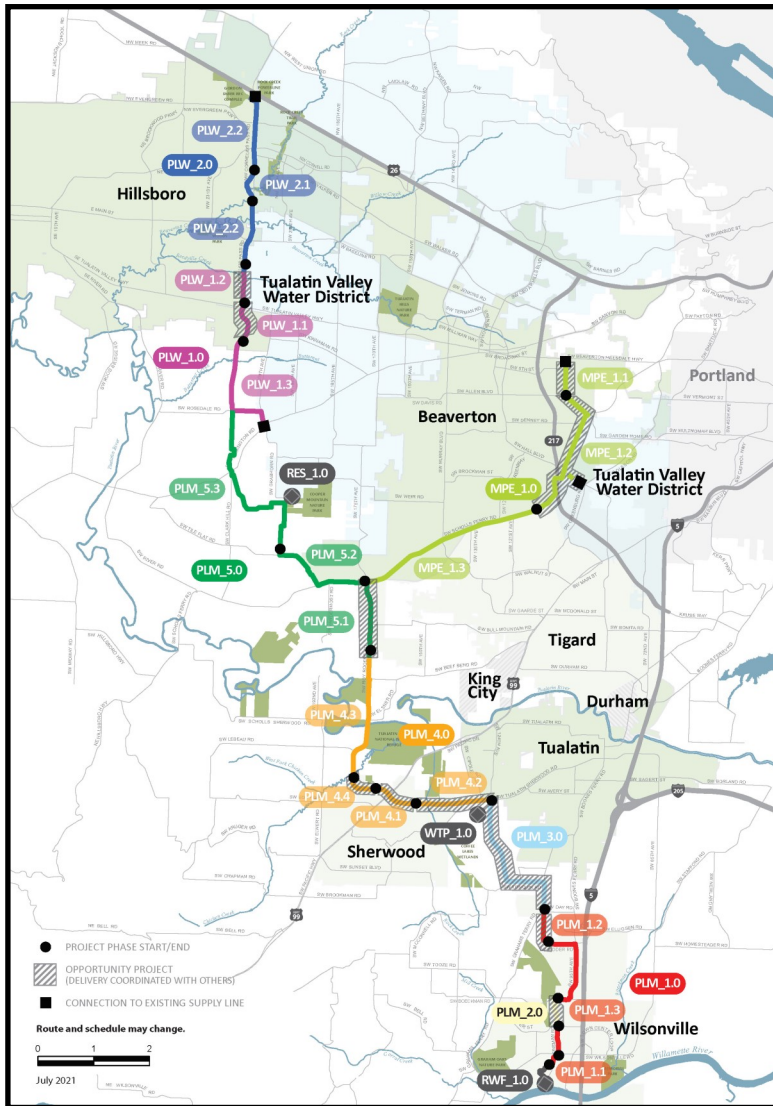
*Current program forecast at completion may vary from baseline cumulative budget due to interim approved changes.

Cumulative Cost Summary

WWSP cumulative costs are tracked and updated monthly. The chart below summarizes the distribution of cumulative costs through August 2021.

Cumulative Water Supply Program costs to date are approximately \$310 million, with the majority spent on planning, engineering, and construction.





PLW_2.0 Cornelius Pass Pipeline Project
(Frances Road to Highway 26)

Description: 3.3-mile water pipeline along Cornelius Pass Rd. from Frances St. to Hwy 26; connects to existing supply lines for City of Hillsboro and TVWD.
Status: Design (a portion deferred until 2029)

PLW_1.0 South Hillsboro Area Pipeline Project
(Farmington Road to Frances Street)

Description: 4-mile water pipeline from SW Farmington Rd. at SW 209th Ave. to Cornelius Pass Rd. at Frances St.
Status: Phase 1: Complete; Phase 2: Design Complete; Phase 3: Construction

MPE_1.0 Metzger Pipeline East Project
(Roy Rogers Road to Beaverton Hillsdale Hwy)

Description: 7.3-mile water pipeline to be built along SW Scholls Ferry Rd. between SW Roy Rogers Rd. and Allen Blvd.; connects to Metzger service area at SW Oleson Rd. and TVWD's system.
Status: Phase 1: Construction; Phase 2: Construction; Phase 3: Design

RES_1.0 South Beaverton Area Water Storage Tanks
(Storage Tanks)

Description: One 15-million gallon storage tank located on Cooper Mountain.
Status: Design

PLM_5.0 Scholls Area Pipeline Project
(North of Beef Bend Road to Rosedale Road)

Description: 7-mile water pipeline from SW Roy Rogers Rd. 0.5-mile north of SW Beef Bend Rd. to SW Rosedale Rd. at SW 209th Ave.
Status: Phase 1: Construction; Phase 2: Complete; Phase 3: Design

PLM_4.0 Tualatin-Sherwood Area Pipeline Project
(SW 124th Avenue to north of Beef Bend Road)

Description: 5.2-mile water pipeline from 124th Ave. at SW Tualatin Sherwood Rd. along SW Roy Rogers Rd. to 0.5 miles north of SW Beef Bend Rd.
Status: Phase 1: Construction; Phase 2: Design; Phase 3: Design; Phase 4: Design

PLM_3.0 124th Avenue Partnership Project
(SW 124th Avenue Extension)

Description: 2.7-mile water pipeline from Grahams Ferry Rd. at Day Rd. to 124th Ave. at SW Tualatin Sherwood Rd.
Status: Complete

PLM_2.0 Kinsman Road Partnership Project
(Kinsman Road Extension)

Description: 0.6-mile water pipeline along Kinsman Rd. between Barber St. and Boeckman Rd.
Status: Complete

PLM_1.0 Wilsonville Area Pipeline Project
(WRWTP to Day Road)

Description: 3.3-mile water pipeline from WRWTP to intersection of SW Garden Acres Rd. at Day Rd.
Status: Phase 1: Complete; Phase 2: Complete; Phase 3: Design

WTP_1.0 Willamette Water Supply System Water Treatment Plant
(Water Treatment Plant (WTP))

FPS_1.0 *Description:* 60-million gallon per day water treatment plant (WTP_1.0), including a finished water pump station (FPS_1.0) and a control system (DCS_1.0) located in Sherwood.

DCS_1.0 *Status:* Design (WTP, FPS, DCS)

RWF_1.0 Raw Water Facilities Expansion
(Raw Water Facilities (RWF) Expansion)

Description: Expansion of the existing raw water pump station and intake at the Willamette River WTP (WRWTP) in Wilsonville to 60 million gallons per day of initial capacity for the Willamette Water Supply System.
Status: Phase 1: Construction; Phase 2: Design Complete

The mid-Willamette River at Wilsonville is the supply source for the WWSS. The system consists of modifying the existing river intake and expanding pumping capacity, building more than 30 miles of drinking water pipeline, reservoir storage facilities on Cooper Mountain, and a new WTP in Sherwood.

For more information about the WWSP, visit www.ourreliablewater.org or call 503.941.4570.

For additional schedule information, go to page 3 of this report, or www.ourreliablewater.org.