

## Our Future Water Supply

The Willamette Water Supply System Commission (WWSS Commission) is an Oregon intergovernmental entity formed by Tualatin Valley Water District (TVWD), the City of Hillsboro, and the City of Beaverton. The WWSS Commission was formed to build the Willamette Water Supply System (WWSS) in response to planned growth in their service areas. TVWD has been designated the Managing Agency for the WWSS Commission, and TVWD operates the Willamette Water Supply Program (WWSP) to plan, design, and construct the WWSS. The WWSS will provide an additional resilient water supply for Washington County. When complete, the WWSS will be one of Oregon’s most seismically-resilient water systems—built to better withstand natural disasters, protect public health, and speed regional economic recovery through restoring critical services more quickly. The new system will be completed by 2026.

# Willamette Water Supply

## Our Reliable Water

Monthly Progress Report

Month End August 2021

### WWSP Real Estate Property Acquisition

Construction of the Willamette Water Supply System (WWSS) requires the procurement of property for the above and below ground water infrastructure. In addition to the 30 miles of underground pipeline, the above ground facilities include a river intake facility, a water treatment plant, and water storage tanks. Property is also needed for temporary construction uses and permanent needs to access, operate, and maintain the system.

WWSS staff have prioritized installing the pipeline within the public right-of-way (ROW) where possible. When outside the public ROW, the required rights to construct, operate, and maintain the pipeline are obtained from other public or private landowners. Where practical, WWSS has coordinated with other partner agencies on planned roadway projects to deliver road and pipeline work within the public ROW, which has reduced

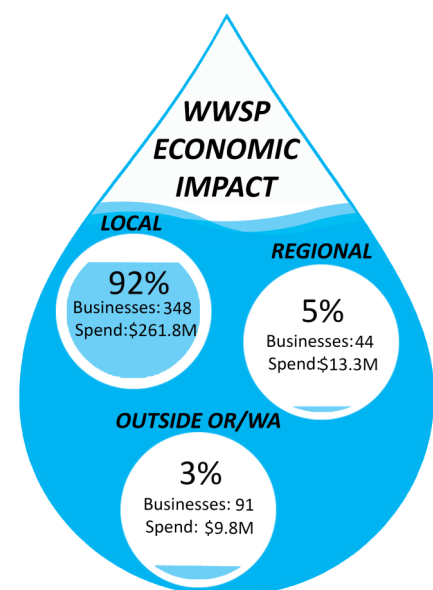
the overall number and cost of property acquisitions and decreased impacts to private landowners.

The Willamette Water Supply Program (WWSP) follows the Uniform Act and obtains authorization to acquire each property through the WWSS Commission Board of Commissioners. The WWSP’s procedures and practices were designed to support the following objectives:

- Acquire necessary property rights to build and maintain pipelines and facilities.
- Acquire property rights in a manner that minimizes hardships to landowners and tenants to the extent practicable.
- Conduct property acquisitions fairly and consistently.
- Maintain required records for all real property interest transactions.

### WWSP Economic Contribution

The WWSP is positively contributing to the Oregon and Washington regional economy with more than \$285 million spent through June 30, 2021. Approximately 348 local businesses (located in counties within 50 miles of the WWSS project site) and 44 regional businesses (located outside the local area but within Oregon or Washington) have participated in the WWSP. The 91 other businesses that are located outside Oregon and Washington are also contributing a positive effect on the local economy, as many of their employees live and work in the local area and generate local benefits through the purchase of goods, services, and other activities.



Data through Q2 2021

## Procurement & Business Opportunities

The WWSP staff are preparing for several upcoming professional services and construction contractor procurements. Listed below are active procurements and upcoming events and procurements. Procurement opportunities are also published at <http://www.ourreliablewater.org/business-opportunities>.

### Upcoming Procurements

- WTP\_1.0 Guaranteed Maximum Price (GMP) for Construction (Quarter 3, 2021)

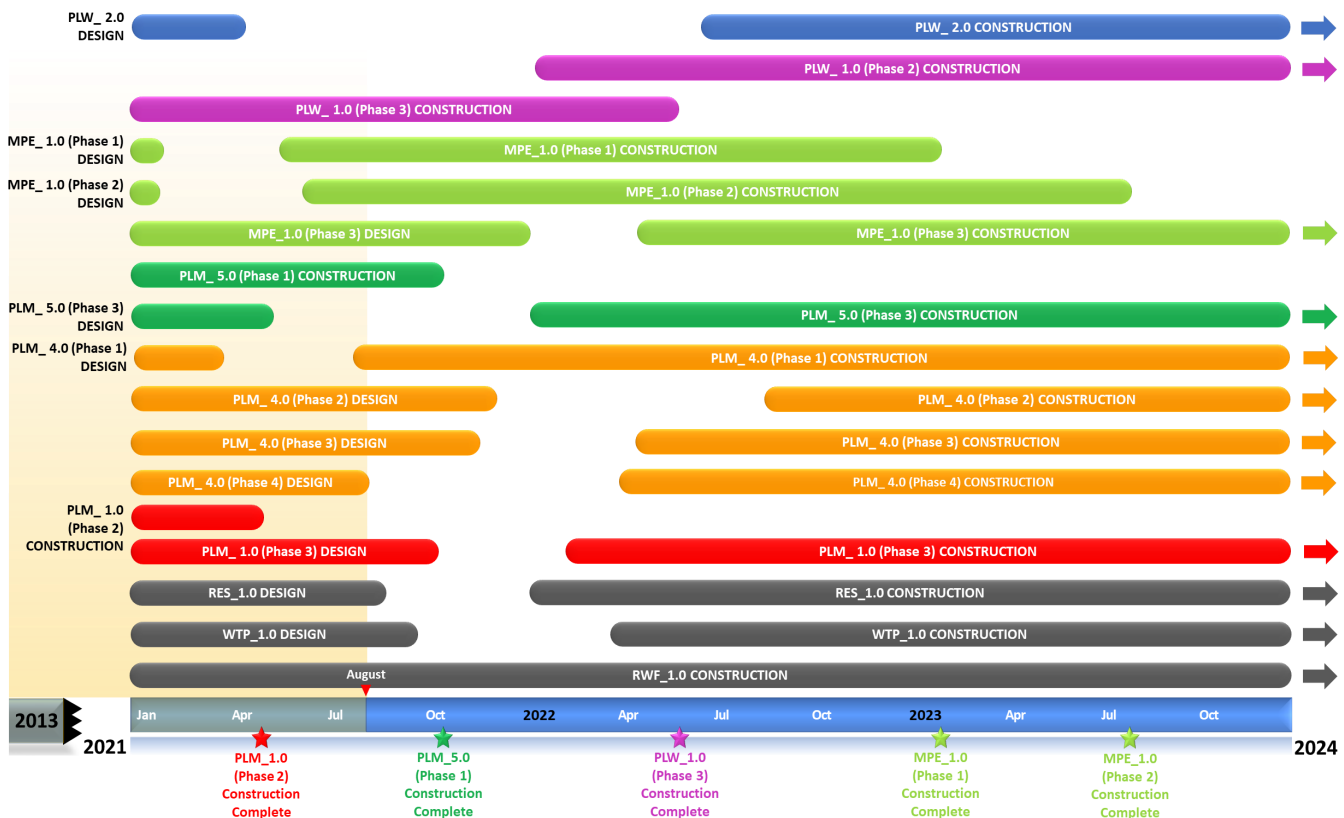
### Upcoming Procurements

- PLM\_4.4 Invitation to Bid (ITB) for Construction\* (Quarter 4, 2021)
- PLM\_1.3 Request for Proposal (RFP) for Construction (Quarter 4, 2021)
- PLW\_1.2 ITB for Construction\* (Quarter 4, 2021)
- PLM\_4.3 RFP for Construction (Quarter 4, 2021)

\*by Washington County

## Schedule Summary

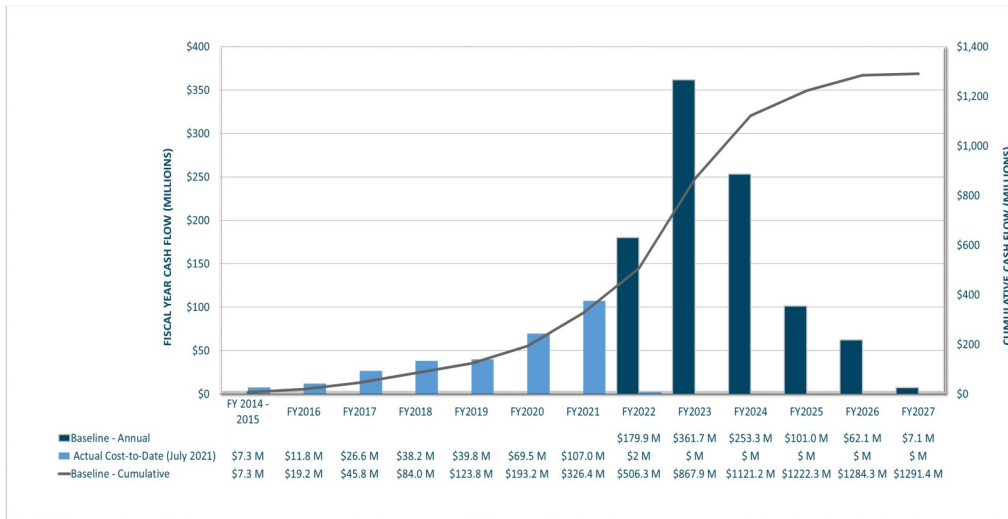
WWSP design and planning began in 2013; the Willamette Water Supply System is expected to be in service by July 2026. Below are the major milestones and activities forecasted from 2021 to 2024\*. The WWSP team is committed to on-time delivery. See page 4 for descriptions of the projects referenced below.



\*The actual order and duration of projects continues to be refined and is subject to change.

## Forecast Cost Summary

The graph below illustrates the projected WWSP cash flow by fiscal year (FY July 1 to June 30)\*. The cumulative cash flow establishes the budgeted \$1.3 billion, which accounts for actual and current projected costs, including projected escalation in the cost of labor, materials, and equipment required to build WWSP projects.



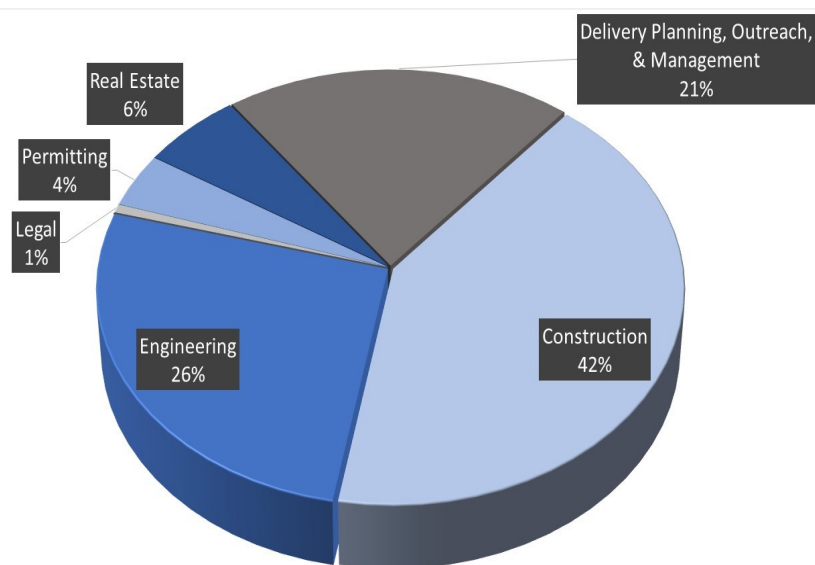
Costs to date for FY 2022 are \$2 million. Cumulative costs are projected to be \$480 million through the end of FY 2022.

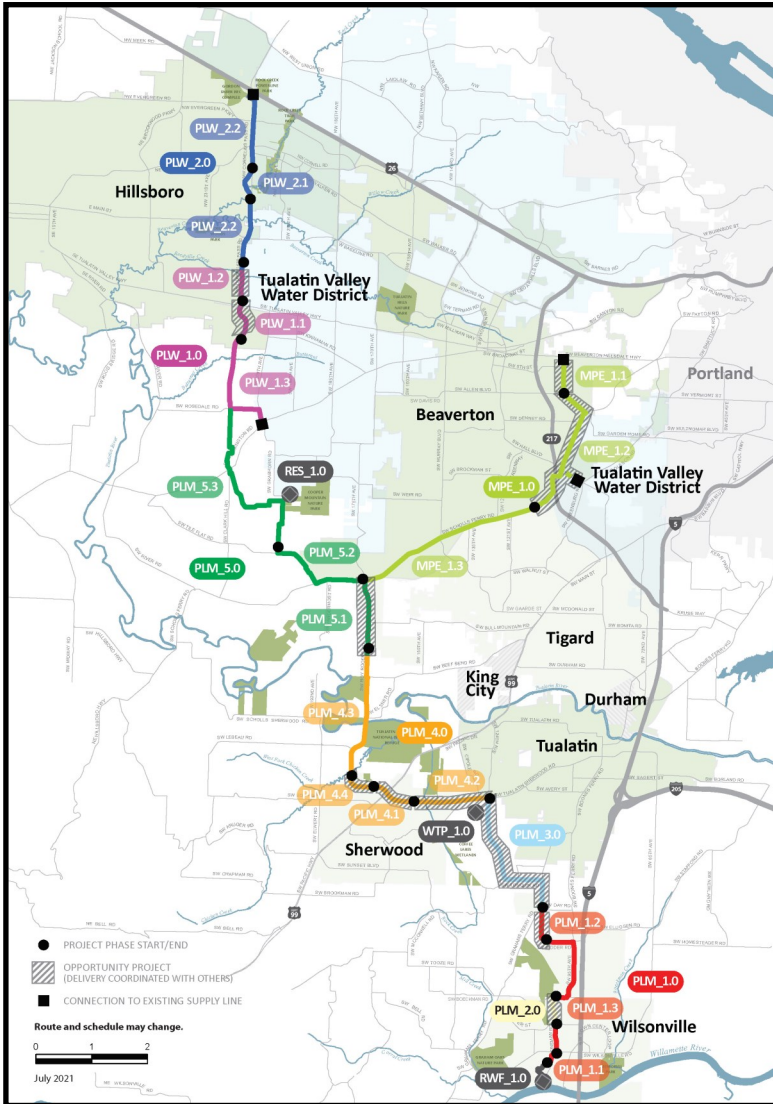
\*Current program forecast at completion may vary from baseline cumulative budget due to interim approved changes.

## Cumulative Cost Summary

WWSP cumulative costs are tracked and updated monthly. The chart below summarizes the distribution of cumulative costs through July 2021.

**Cumulative Water Supply Program costs to date are approximately \$302 million, with the majority spent on planning, engineering, and construction.**





**PLW\_2.0 Cornelius Pass Pipeline Project**  
(Frances Road to Highway 26)

*Description:* 3.3-mile water pipeline along Cornelius Pass Rd. from Frances St. to Hwy 26; connects to existing supply lines for City of Hillsboro and TVWD.  
*Status:* Design (a portion deferred until 2029)

**PLW\_1.0 South Hillsboro Area Pipeline Project**  
(Farmington Road to Frances Street)

*Description:* 4-mile water pipeline from SW Farmington Rd. at SW 209th Ave. to Cornelius Pass Rd. at Frances St.  
*Status:* Phase 1: Complete; Phase 2: Design Complete; Phase 3: Construction

**MPE\_1.0 Metzger Pipeline East Project**  
(Roy Rogers Road to Beaverton Hillsdale Hwy)

*Description:* 7.3-mile water pipeline to be built along SW Scholls Ferry Rd. between SW Roy Rogers Rd. and Allen Blvd.; connects to Metzger service area at SW Oleson Rd. and TVWD's system.  
*Status:* Phase 1: Construction; Phase 2: Construction; Phase 3: Design

**RES\_1.0 South Beaverton Area Water Storage Tanks**  
(Storage Tanks)

*Description:* One 15-million gallon storage tank located on Cooper Mountain.  
*Status:* Design

**PLM\_5.0 Scholls Area Pipeline Project**  
(North of Beef Bend Road to Rosedale Road)

*Description:* 7-mile water pipeline from SW Roy Rogers Rd. 0.5-mile north of SW Beef Bend Rd. to SW Rosedale Rd. at SW 209th Ave.  
*Status:* Phase 1: Construction; Phase 2: Complete; Phase 3: Design

**PLM\_4.0 Tualatin-Sherwood Area Pipeline Project**  
(SW 124th Avenue to north of Beef Bend Road)

*Description:* 5.2-mile water pipeline from 124th Ave. at SW Tualatin Sherwood Rd. along SW Roy Rogers Rd. to 0.5 miles north of SW Beef Bend Rd.  
*Status:* Phase 1: Construction; Phase 2: Design; Phase 3: Design; Phase 4: Design

**PLM\_3.0 124th Avenue Partnership Project**  
(SW 124th Avenue Extension)

*Description:* 2.7-mile water pipeline from Grahams Ferry Rd. at Day Rd. to 124th Ave. at SW Tualatin Sherwood Rd.  
*Status:* Complete

**PLM\_2.0 Kinsman Road Partnership Project**  
(Kinsman Road Extension)

*Description:* 0.6-mile water pipeline along Kinsman Rd. between Barber St. and Boeckman Rd.  
*Status:* Complete

**PLM\_1.0 Wilsonville Area Pipeline Project**  
(WRWTP to Day Road)

*Description:* 3.3-mile water pipeline from WRWTP to intersection of SW Garden Acres Rd. at Day Rd.  
*Status:* Phase 1: Complete; Phase 2: Construction; Phase 3: Design

**WTP\_1.0 Willamette Water Supply System Water Treatment Plant**  
(Water Treatment Plant (WTP))

*Description:* 60-million gallon per day water treatment plant (WTP\_1.0), including a finished water pump station (FPS\_1.0) and a control system (DCS\_1.0) located in Sherwood.

*Status:* Design (WTP, FPS, DCS)

**RWF\_1.0 Raw Water Facilities Expansion**  
(Raw Water Facilities (RWF) Expansion)

*Description:* Expansion of the existing raw water pump station and intake at the Willamette River WTP (WRWTP) in Wilsonville to 60 million gallons per day of initial capacity for the Willamette Water Supply System.

*Status:* Phase 1: Construction; Phase 2: Design Complete

The mid-Willamette River at Wilsonville is the supply source for the WWSS. The system consists of modifying the existing river intake and expanding pumping capacity, building more than 30 miles of drinking water pipeline, reservoir storage facilities on Cooper Mountain, and a new WTP in Sherwood.

For more information about the WWSP, visit [www.ourreliablewater.org](http://www.ourreliablewater.org) or call 503.941.4570.

For additional schedule information, go to page 3 of this report, or [www.ourreliablewater.org](http://www.ourreliablewater.org).