

Our Future Water Supply

The Willamette Water Supply System Commission (WWSS Commission) is an Oregon intergovernmental entity formed by Tualatin Valley Water District (TVWD), the City of Hillsboro, and the City of Beaverton. The WWSS Commission was formed to build the Willamette Water Supply System (WWSS) in response to planned growth in their service areas. TVWD has been designated the Managing Agency for the WWSS Commission, and TVWD operates the Willamette Water Supply Program (WWSP) to plan, design, and construct the WWSS. The WWSS will provide an additional resilient water supply for Washington County. When complete, the WWSS will be one of Oregon’s most seismically-resilient water systems—built to better withstand natural disasters, protect public health, and speed regional economic recovery through restoring critical services more quickly. The new system will be completed by 2026.

Willamette Water Supply

Our Reliable Water

Monthly Progress Report

Month End February 2021

What is a Geographic Information System?

You’ve probably come across the term geographic information system or GIS. It’s all around us—from monitoring and mapping vehicles to locating and focusing on customers—GIS is everywhere we turn. If you’ve ever used Google maps, you’ve used GIS. It is used in many different ways for the Willamette Water Supply System (WWSS) in planning, design, and construction. Below are a few of the GIS uses for the WWSS:

Outreach/communications - Producing an interactive map to view current and future construction activities including flyovers of each project and interactive links (see image below and <http://www.ourreliablewater.org/gis/>).

Map exhibits - Preparing maps/graphics for reports, memos, board meetings, public events, meetings, and presentations.

Web applications - Viewing and managing environmental and real estate data, alignments, properties, and easements and some times linking to other websites.

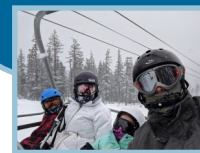
Construction/operations - Tracking maintenance through a work order system to visually see assets on a map, viewing maintenance history, and documenting new inspections or other activities.

Meet WWSS’s GIS Expert



Scott Fortman, the Willamette Water Supply Program’s GIS analyst, is responsible for day-to-day GIS

activities that keep visual and spatial data available for the team delivering the \$1.3 billion water infrastructure project. Stemming from a love of geography and his father’s *Thomas Guide* maps, Scott graduated from the University of California Santa Barbara and moved to Oregon shortly after. He spent his early career in Operations and Field Customer Service, eventually finding his true passion through InfraMap implementation and becoming a GIS Technician in 2014. Outside of GIS, Scott spends most of his time with family “...getting out on the trail for a week, peaking a few mountains and jumping into some lakes.”



2021 Construction
2022 Construction
2023 Construction
2024 Construction
Road closures/Detours

RWF_1.0

The Project is an expansion of the existing raw water pump station and intake infrastructure at the Willamette River Water Treatment Plant. The expansion will result in a WWSS capacity of 60 mgd. Major project elements include new vertical turbine pumps with variable frequency drives, electrical facilities, water surge protection, backup power, raw water pipeline at the WRWTP site, and seismic improvements.

Procurement & Business Opportunities

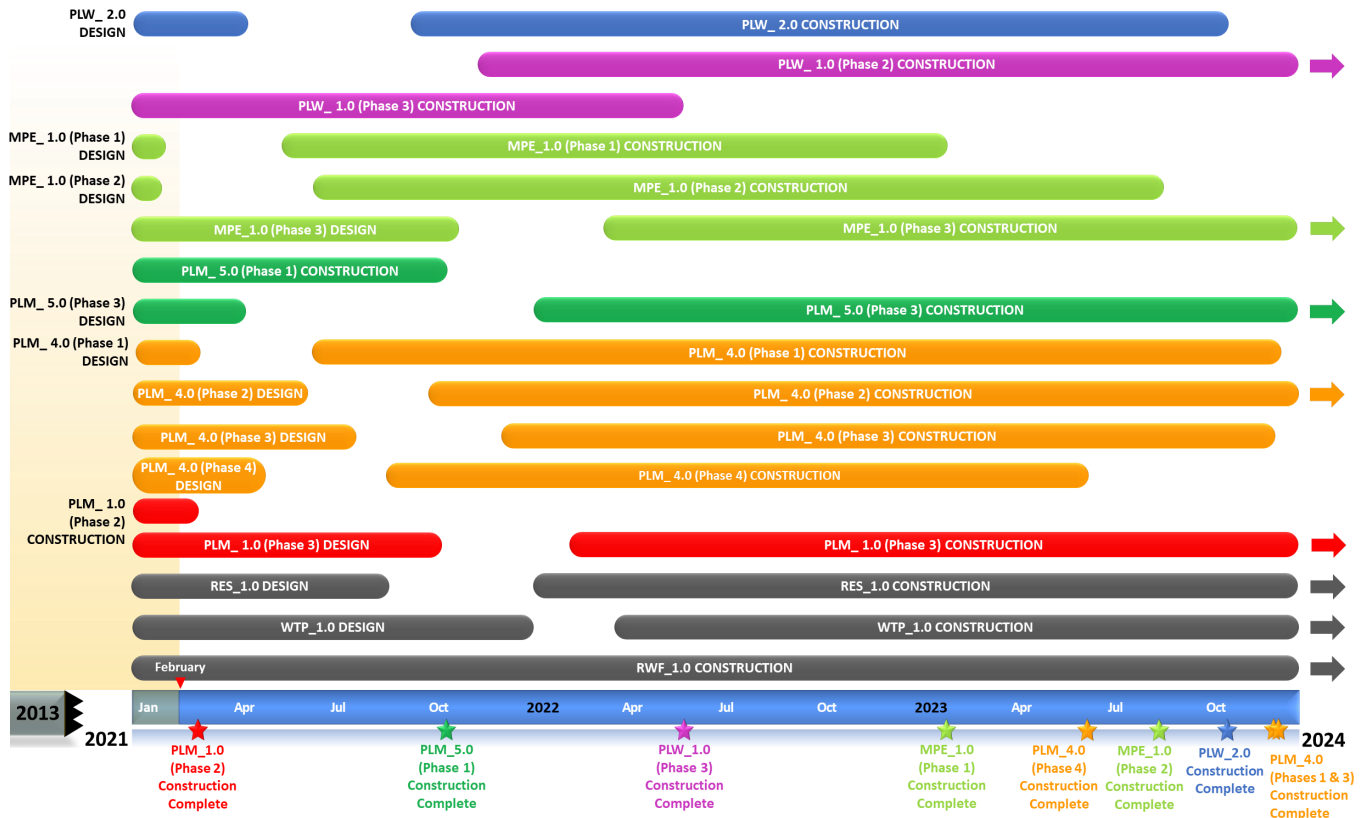
The WWSP staff are preparing for several upcoming professional services and construction contractor procurements. Listed below are active procurements and upcoming events and procurements. Procurement opportunities are also published at <http://www.ourreliablewater.org/business-opportunities>.

Upcoming Procurements

- MPE_1.2 Request for Proposal (RFP) for Construction (Quarter 1, 2021)
- MPE_1.1 Invitation to Bid (ITB) for Construction by City of Beaverton (Quarter 1, 2021)
- PLM_4.1 ITB for Construction by Washington County (Quarter 1, 2021)
- PLW_2.0 RFP for Construction (Quarter 2, 2021)
- PLM_4.4 ITB for Construction by Washington County (Quarter 2, 2021)
- PLM_4.2 ITB for Construction by Washington County (Quarter 3, 2021)
- PLM_4.3 RFP for Construction (Quarter 3, 2021)

Schedule Summary

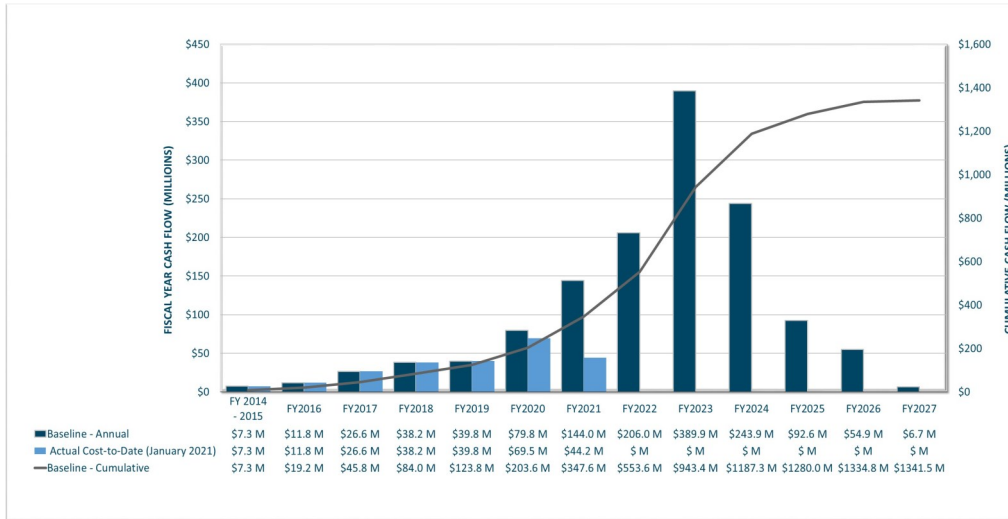
WWSP design and planning began in 2013; the Willamette Water Supply System is expected to be in service by July 2026. Below are the major milestones and activities forecasted from 2021 to 2024*. The WWSP team is committed to on-time delivery. See page 4 for descriptions of the projects referenced below.



*The actual order and duration of projects continues to be refined and is subject to change.

Forecast Cost Summary

The graph below illustrates the projected WWSP cash flow by fiscal year (FY July 1 to June 30)*. The cumulative cash flow establishes the budgeted \$1.3 billion, which accounts for actual and current projected costs, including projected escalation in the cost of labor, materials, and equipment required to build WWSP projects.



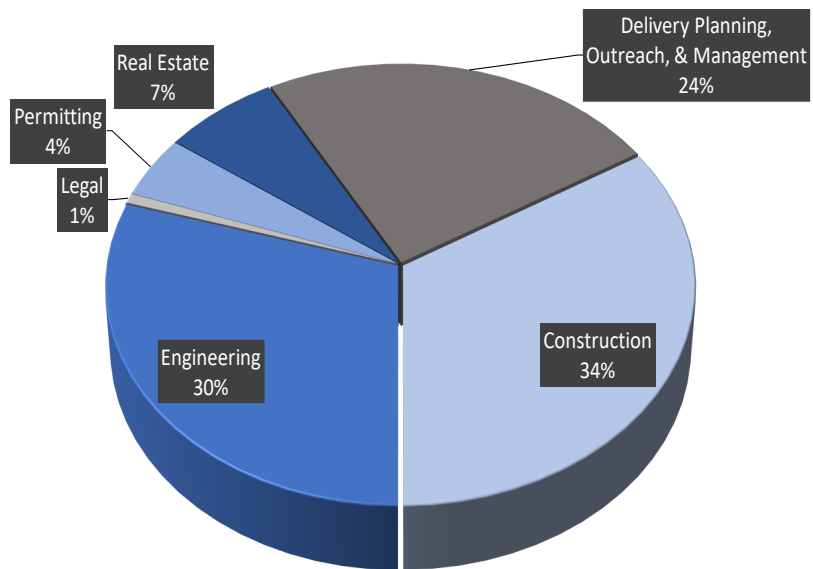
Costs to date for FY 2021 are \$44 million. Cumulative costs are projected to be \$337 million through the end of FY 2021.

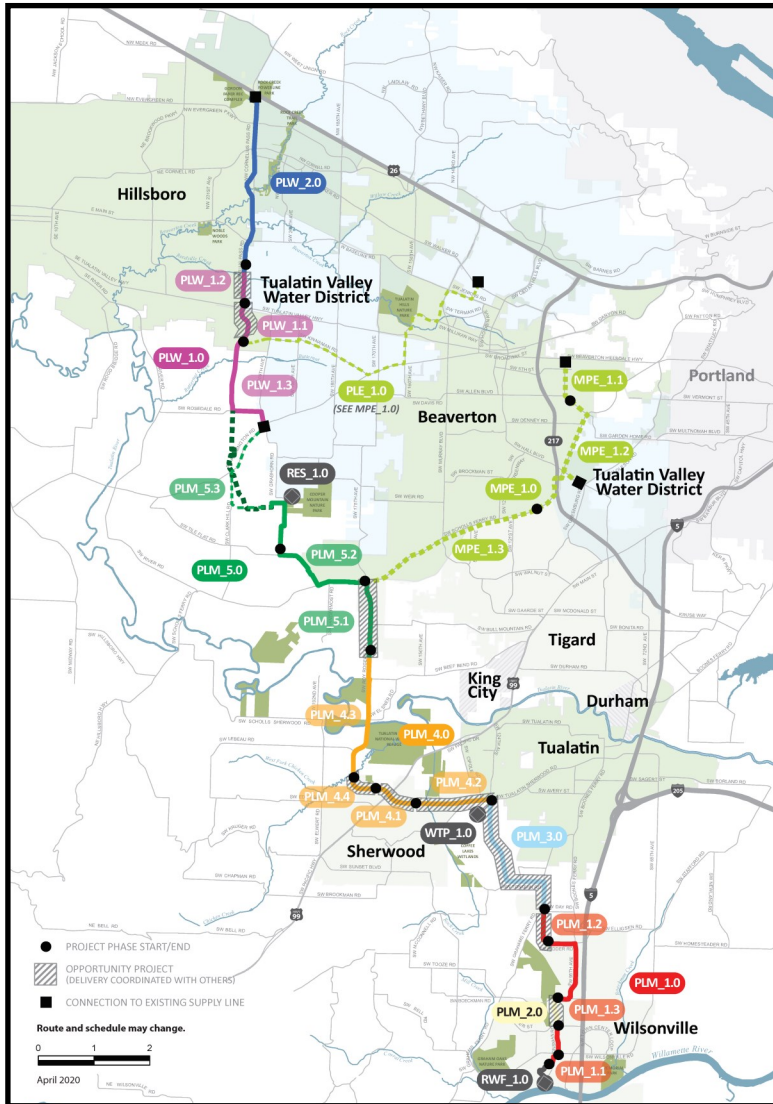
*Data continues to be refined and is subject to change.

Cumulative Cost Summary

WWSP cumulative costs are tracked and updated monthly. The chart below summarizes the distribution of cumulative costs through January 2021.

Cumulative Water Supply Program costs to date are approximately \$237 million, with the majority spent on planning, engineering, construction, and real estate activities.





PLW_2.0 Cornelius Pass Pipeline Project
(Frances Road to Highway 26)

Description: 3.3-mile water pipeline along Cornelius Pass Rd. from Frances St. to Hwy 26; connects to existing supply lines for City of Hillsboro and TVWD.
Status: Design

PLW_1.0 South Hillsboro Area Pipeline Project
(Farmington Road to Frances Street)

Description: 4-mile water pipeline from SW Farmington Rd. at SW 209th Ave. to Cornelius Pass Rd. at Frances St.
Status: Phase 1: Complete; Phase 2: Design; Phase 3: Construction

MPE_1.0 Metzger Pipeline East Project
(Roy Rogers Road to Beaverton Hillsdale Hwy)

Description: 7.3-mile water pipeline to be built in lieu of PLE_1.0 along SW Scholls Ferry Rd. between SW Roy Rogers Rd. and Allen Blvd.; connects to Metzger service area at SW Oleson Rd. and TVWD's system.
Status: Phase 1: Design; Phase 2: Design; Phase 3: Design

RES_1.0 South Beaverton Area Water Storage Tanks
(Storage Tanks)

Description: Two 15-million gallon storage tanks located on Cooper Mountain.
Status: Design

PLM_5.0 Scholls Area Pipeline Project
(North of Beef Bend Road to Farmington Road)

Description: 7-mile water pipeline from SW Roy Rogers Rd. 0.5-mile north of SW Beef Bend Rd. to SW Farmington Rd. at SW 209th Ave.
Status: Phase 1: Construction; Phase 2: Complete; Phase 3: Design

PLM_4.0 Tualatin-Sherwood Area Pipeline Project
(SW 124th Avenue to north of Beef Bend Road)

Description: 5.2-mile water pipeline from 124th Ave. at SW Tualatin Sherwood Rd. along SW Roy Rogers Rd. to 0.5 miles north of SW Beef Bend Rd.
Status: Phase 1: Design; Phase 2: Design; Phase 3: Design; Phase 4: Design

PLM_3.0 124th Avenue Partnership Project
(SW 124th Avenue Extension)

Description: 2.7-mile water pipeline from Grahams Ferry Rd. at Day Rd. to 124th Ave. at SW Tualatin Sherwood Rd.
Status: Complete

PLM_2.0 Kinsman Road Partnership Project
(Kinsman Road Extension)

Description: 0.6-mile water pipeline along Kinsman Rd. between Barber St. and Boeckman Rd.
Status: Complete

PLM_1.0 Wilsonville Area Pipeline Project
(WRWTP to Day Road)

Description: 3.3-mile water pipeline from WRWTP to intersection of SW Garden Acres Rd. at Day Rd.
Status: Phase 1: Complete; Phase 2: Construction; Phase 3: Design

WTP_1.0 Willamette Water Supply System Water Treatment Plant
(Water Treatment Plant (WTP))

Description: 60-million gallon per day water treatment plant (WTP_1.0), including a finished water pump station (FPS_1.0) and a control system (DCS_1.0) located in Sherwood.

Status: Design (WTP, FPS, DCS)

RWF_1.0 Raw Water Facilities Expansion
(Raw Water Facilities (RWF) Expansion)

Description: Expansion of the existing raw water pump station and intake at the Willamette River WTP (WRWTP) in Wilsonville to 60 million gallons per day of initial capacity for the Willamette Water Supply System.

Status: Phase 1: Construction; Phase 2: Design Complete

The mid-Willamette River at Wilsonville is the supply source for the WWSS. The system consists of modifying the existing river intake and expanding pumping capacity, building more than 30 miles of drinking water pipeline, reservoir storage facilities on Cooper Mountain, and a new WTP in Sherwood.

For more information about the WWSP, visit www.ourreliablewater.org or call 503.941.4570.

For additional schedule information, go to page 3 of this report, or www.ourreliablewater.org.