



# Willamette Water Supply

*Our Reliable Water Future*

Riggs Road neighbors

February 3, 2021

# Tonight's Topics

- Program Overview
  - What's under construction
- Scholls Ferry Area alignment (PLM\_5.3)
  - Why a change was needed
  - The preferred alignment
  - Where we are with design and construction
- Specifics for Riggs Road





# PROGRAM OVERVIEW

# Water Supply Program

1. Modified water intake
2. New water treatment plant
3. 30+ miles of large diameter pipeline
4. Water storage tanks



*Operational in 2026*

*Project cost estimate: \$1.3 billion*



# *Preparing for the future*

*Metro predicts more than 200,000 additional people living in Washington County by 2040.\**

\*Based on 2016 Metro forecast. (2016 Pop. 566,000)





# *Building a secure drinking water future*



- ✓ *Earthquake resilient*
- ✓ *Alternative source during a drought*
- ✓ *Back-up if one source has water quality issues*



## Projects Complete

PLW 1.1 – South Hillsboro

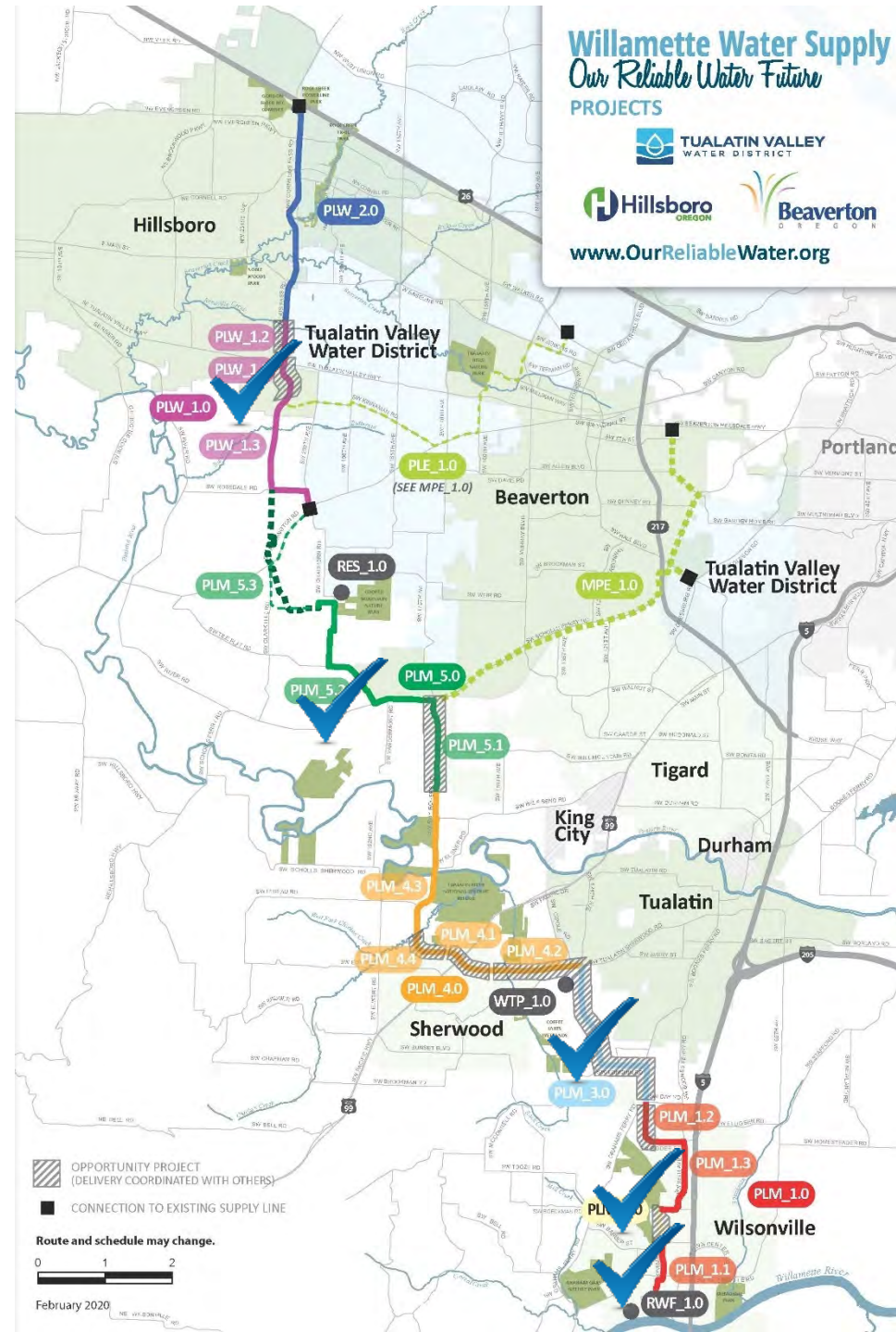
PLM 5.2 – Scholls Ferry Rd  
to Grabhorn Rd

PLM 3.0 – 124<sup>th</sup> Ave

PLM 2.0 – Kinsman Rd

PLM 1.1 – Wilsonville Rd\*

\* nearly complete







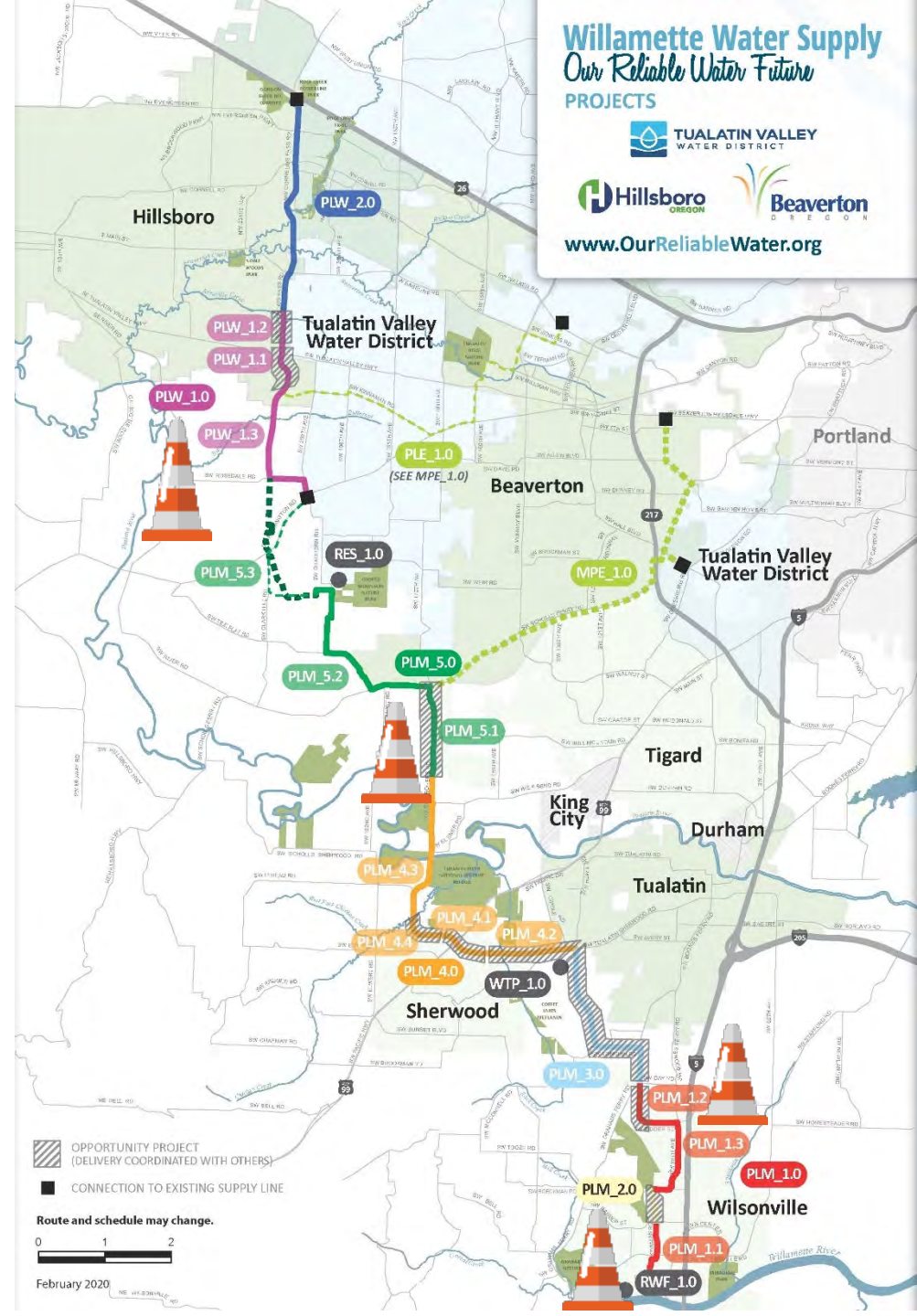
# Projects under Construction

PLW 1.3 – South Hillsboro, Rosedale Road, 209<sup>th</sup>

PLM 5.1 – Roy Rogers Road

PLM 1.2 – Garden Acres

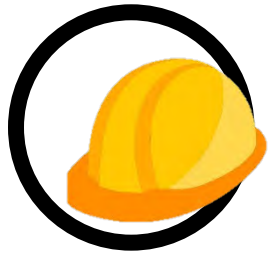
RWF 1.0 – Raw Water Facility





# South Hillsboro Pipeline Construction





# 2021 NEW Construction Projects

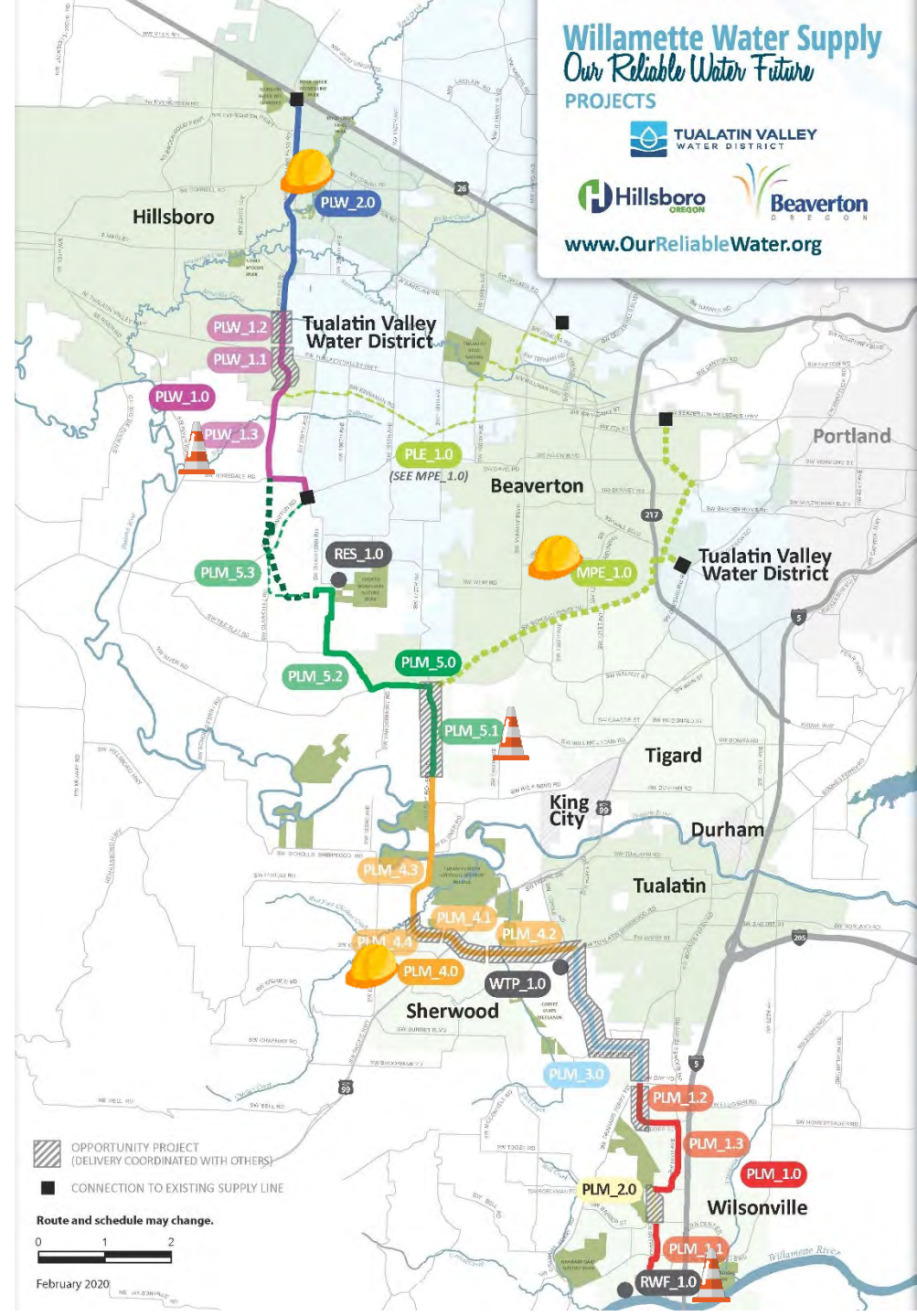
## PLM 4.0 – Tualatin Sherwood Area

- PLM 4.1 Highway 99 Crossing
- PLM 4.2 Tualatin-Sherwood Rd
- PLM 4.3 Roy Rogers Road
- PLM 4.4 Chicken Creek to Borchers

## MPE 1.0 – Metzger Pipeline East

- MPE 1.1 Phase 1
- MPE 1.2 Phase 2

## PLW 2.0 – Cornelius Pass Road (Frances to Sunset Hwy)







## **SCHOLLS FERRY AREA ALIGNMENT (PLM\_5.3)**



# Study Area

## Areas of Concern

- Clark Hill Road
- Farmington Road

## Why refinement?

- Significant seismic risks requires extensive ground stabilization measures



# Alignment Analysis

- Seismic stability
- Environmental impacts
- Community impacts
- Construction feasibility
- Opportunities to partner or coordinate with Washington County



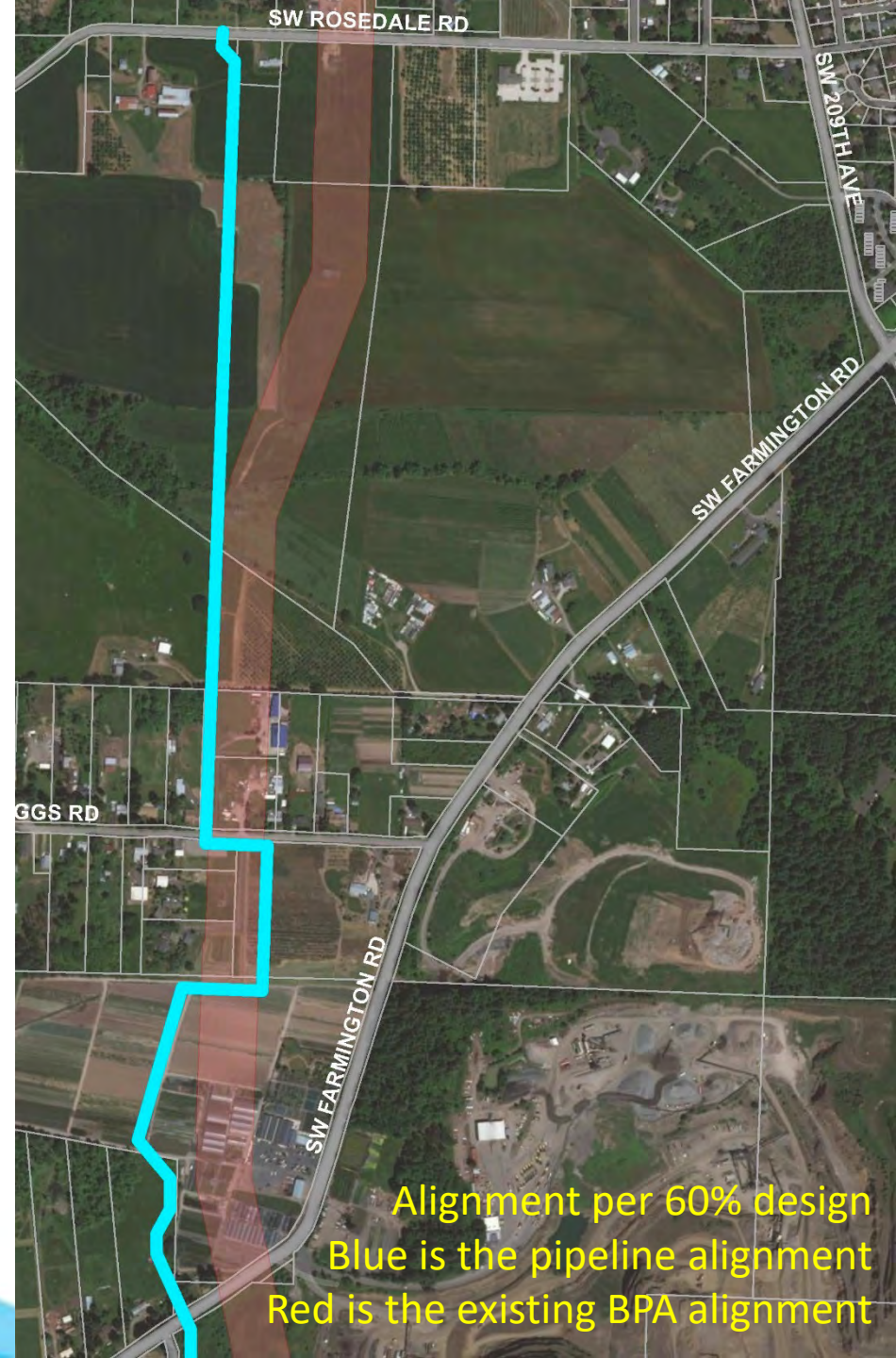
# Preferred Alignment





# North of Farmington Rd

- Fixed connection points
  - Rosedale Road
  - TVWD pump station at 209<sup>th</sup>/Farmington Road
- Challenges
  - Private septic systems
  - BPA alignment
  - Residential and business considerations





# Riggs Road Crossing

- Alignment crosses Riggs Road – south to north
- Easements needed from four property owners



# Where are we today?



[This Photo](#) by Unknown Author is licensed under [CC BY-NC](#)

- ✓ 90% design complete
- ✓ Easement discussions started
- ✓ Washington Co. land use application submitted
- ✓ CMGC contractor on board

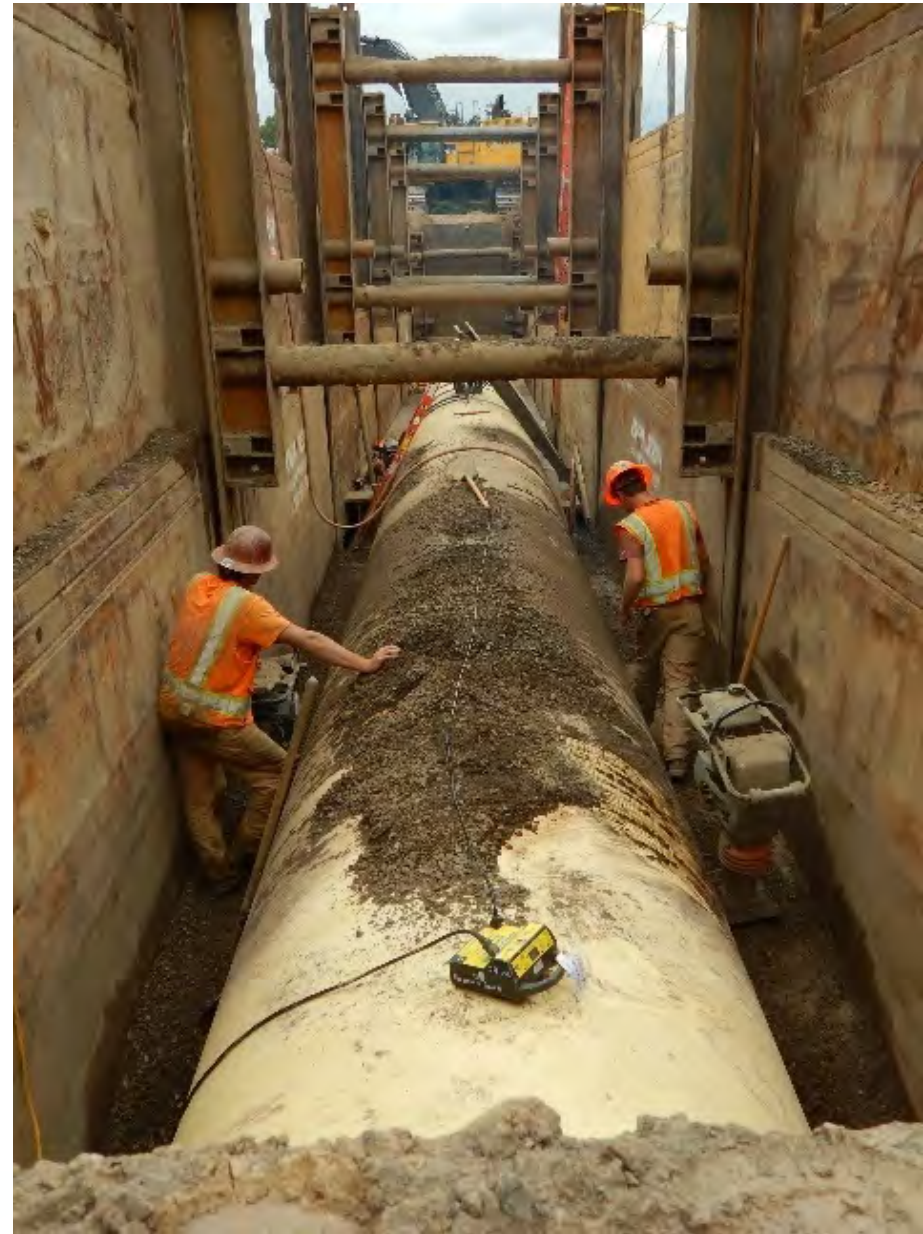
## Spring 2021

- Washington Co. land use approval (anticipated)
- 100% design complete



# Construction

- Anticipated 2022 – 2025
- Combined with water storage tanks
- Grabhorn Road closures
- Trenchless crossing of Farmington Road
- Schedule constraints
  - In-water work windows
  - Wet weather ground considerations



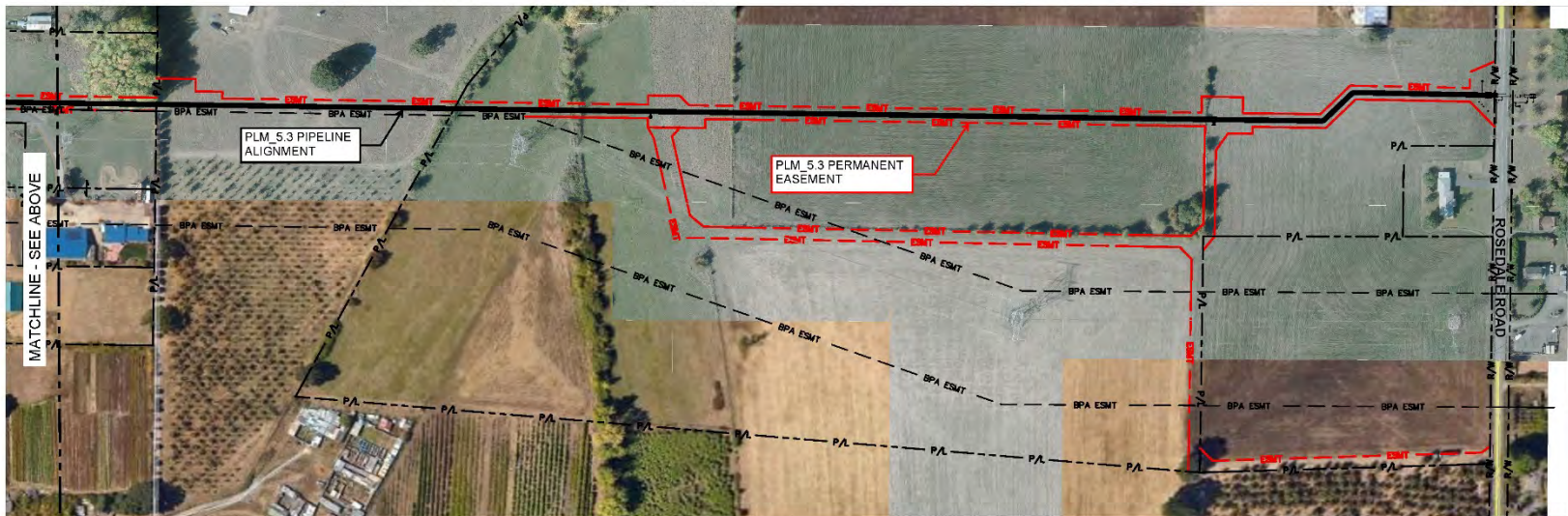
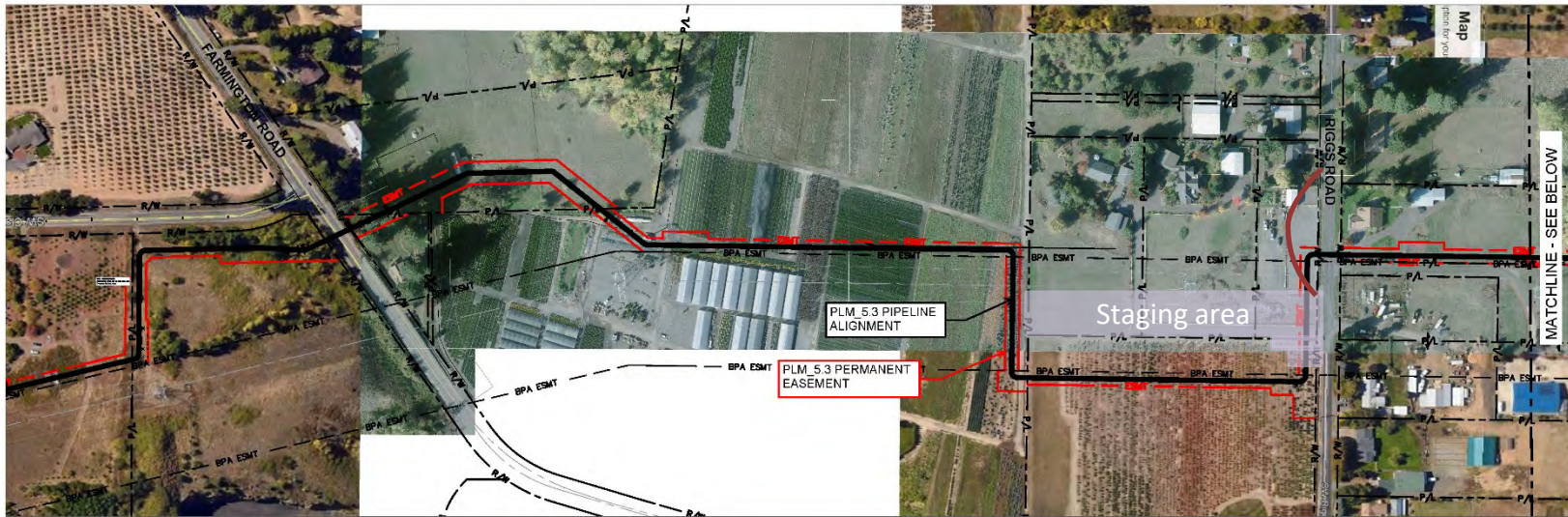
# Riggs Road Construction

- Road will remain open – controlled by flaggers OR shoofly detour to get around work zone
- Driveways remain accessible
- Staging area south side of Riggs Road
- Construction vehicles on Riggs Road to access staging area and pipeline alignment





# NOT TO SCALE – FOR ILLUSTRATIVE PURPOSES ONLY



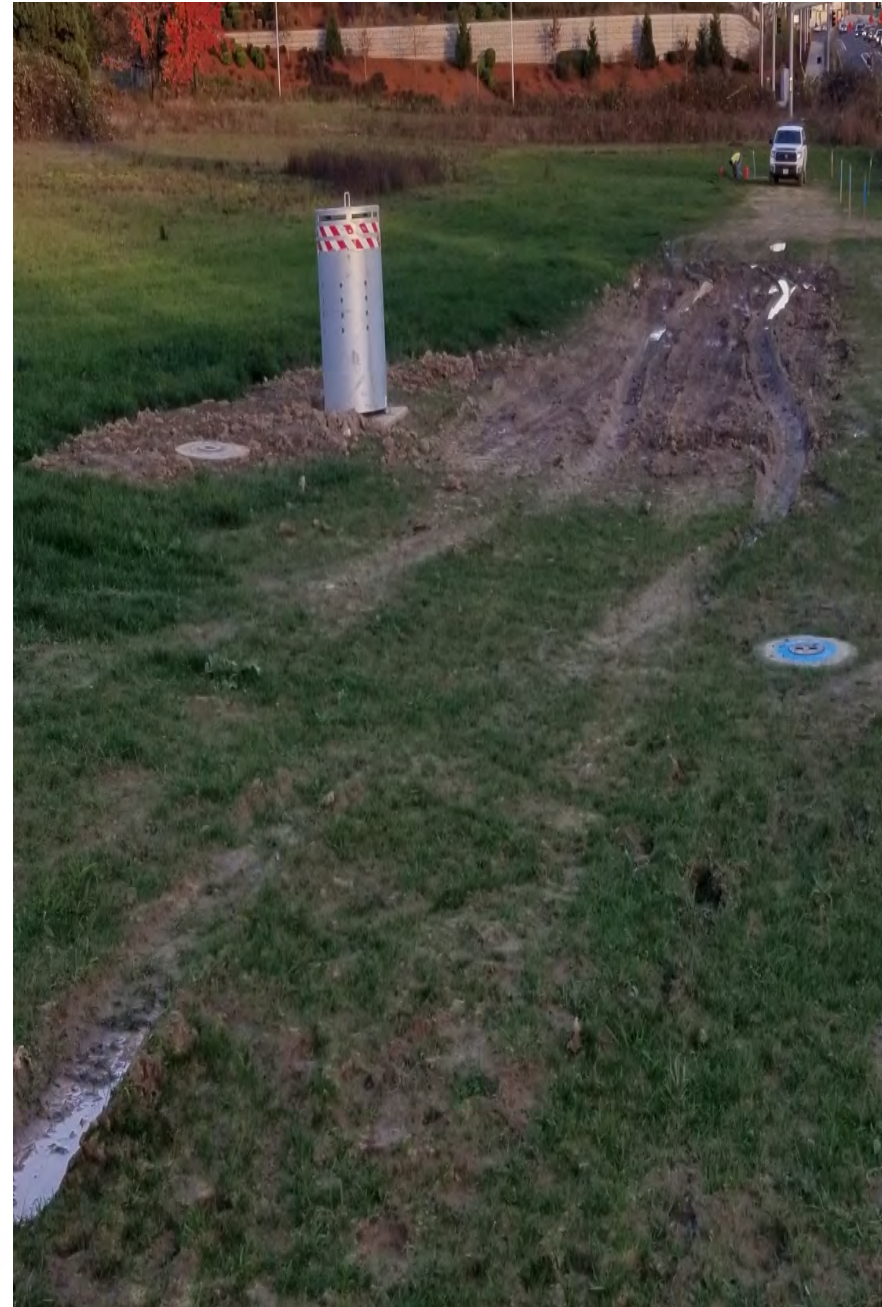
JANUARY 26, 2021

PLM\_5.3 ALIGNMENT: FARMINGTON ROAD TO ROSEDALE ROAD



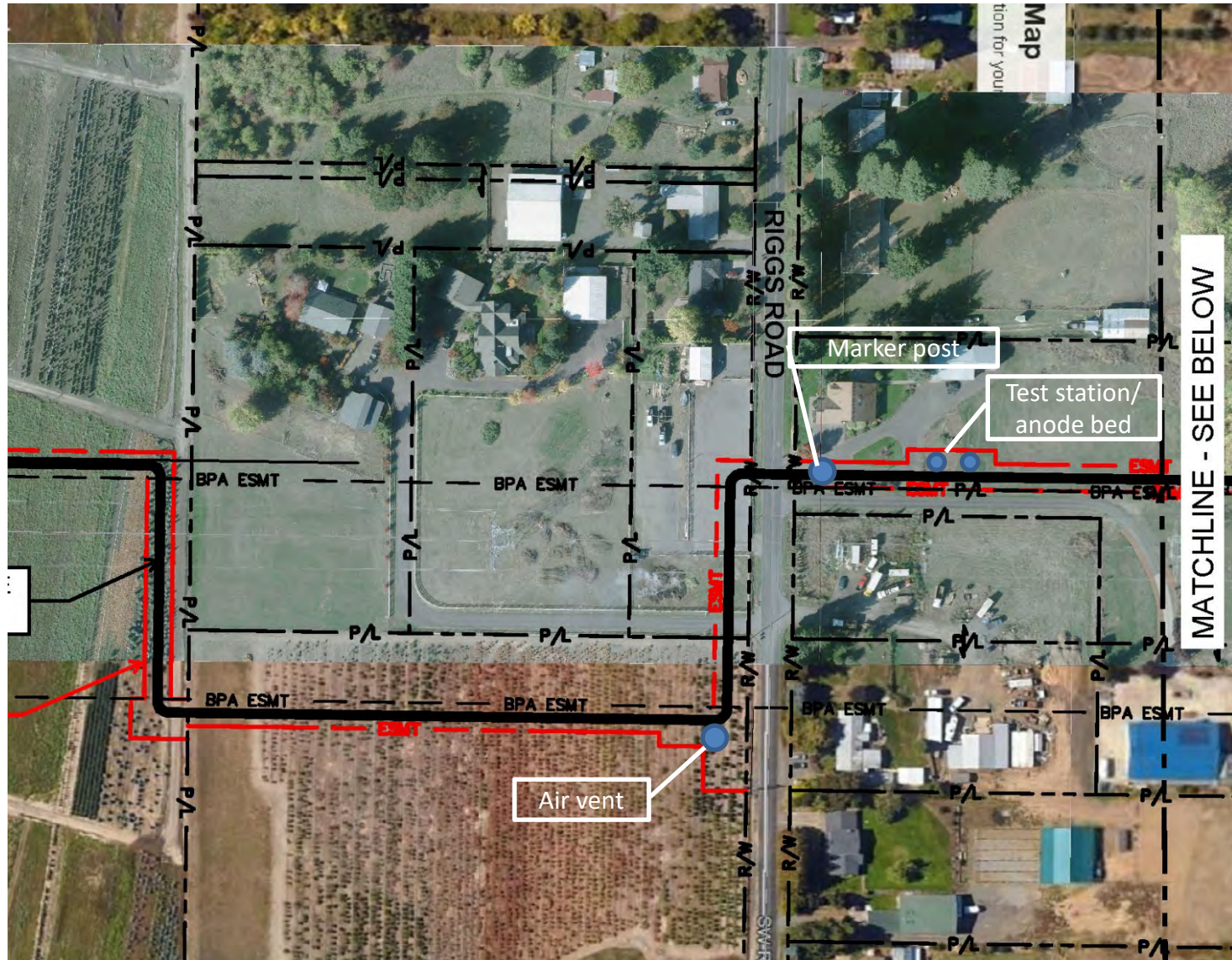
# Post-construction

- Vault on the south side of Riggs Road
- Marker post on the north side of Riggs Road
- Test station and anode bed along alignment north of Riggs Road
- Gravel access road in permanent easement
- Infrequent access road use by WWSS operations





NOT TO SCALE – FOR ILLUSTRATIVE PURPOSES ONLY







**QUESTIONS?**

**THANK YOU!**

**Kimi Sloop**  
**503-941-4570**

[info@ourreliablewater.org](mailto:info@ourreliablewater.org)  
[www.ourreliablewater.org](http://www.ourreliablewater.org)