

Our Future Water Supply

The Willamette Water Supply System Commission (WWSS Commission) is an Oregon intergovernmental entity formed by Tualatin Valley Water District (TVWD), the City of Hillsboro, and the City of Beaverton. The WWSS Commission was formed to build the Willamette Water Supply System (WWSS) in response to planned growth in their service areas. TVWD has been designated the Managing Agency for the WWSS Commission, and TVWD operates the Willamette Water Supply Program (WWSP) to plan, design, and construct the WWSS. The WWSS will provide an additional resilient water supply for Washington County. When complete, the WWSS will be one of Oregon's most seismically-resilient water systems—built to better withstand natural disasters, protect public health, and speed regional economic recovery through restoring critical services more quickly. The new system will be completed by 2026.

Willamette Water Supply

Monthly Progress Report

Our Reliable Water

Month End November 2020

Wilsonville Area Pipeline Project Phase 1 Final Construction

The Wilsonville Area Pipeline Project is a 3.3-mile water pipeline from the Willamette River Water Treatment Plant (WRWTP) property to the intersection of SW Garden Acres Road and Day Road. **Phase 1** (PLM_1.1) entailed 0.26 miles of 66-inch diameter pipeline that extends from just east of Arrowhead Creek to just south of Wilsonville Road.

In November, the last piece of pipe was installed for this milestone project, which



PLM_1.1 final construction and restoration

was constructed primarily on private property and beneath a creek. The project included temporarily bypassing Coffee Lake Creek within a culvert to enable installation of pipe beneath the creek. It was also constructed beneath a City of Wilsonville sewer main and finished water main; both remained in service throughout construction with the help of a contractor-designed support system.

The installation of pipe across Industrial Way was managed through a traffic control plan that allowed continuous traffic flow for a nearby trucking transport company, a nursery, a water treatment plant, and a concrete plant. Restoration of the local nursery included placement of topsoil for the nursery to continue planting small vegetation.

Phase 2 (PLM_1.2), a partner project with the City of Wilsonville's Garden Acres Road Project, is currently in construction and is anticipated to be complete by early 2021.

Phase 3 (PLM_1.3) is currently in design and scheduled to begin construction early 2022.

Metzger Pipeline East Project's Three Phases

The Metzger Pipeline East (MPE) Project is a 7.3-mile water pipeline that will follow SW Scholls Ferry Road between SW Roy Rogers Road and Allen Boulevard. It will connect to TVWD's Metzger service area. It will be built with the City of Beaverton (COB_1.0) 16-inch pipeline for efficiency, cost savings, and to reduce the duration of impacts to the public.

Phase 1 (MPE_1.1) consists of 0.7-miles of 48-inch and (COB_1.1) 16-inch diameter pipeline along Allen Boulevard and Western Avenue. Construction will include crossing a railroad and, for COB_1.1, a connection to the City of Beaverton pipeline at the Beaverton-Hillsdale Highway. Construction is scheduled to begin early 2021.

Phase 2 (MPE_1.2) consists of 3.3-miles of 48-inch, 24-inch, and (COB_1.2) 16-inch diameter pipeline along SW Scholls Ferry Road between Allen Boulevard and Greenway Park. Construction will include crossing underneath two creeks, two railroads, and Highway 217—all using trenchless pipeline methods. Construction of the pipeline is anticipated mid-2021.

Phase 3 (MPE_1.3) consists of 3.4-miles of 48-inch diameter pipeline along Scholls Ferry Road, connecting to PLM_5.1 on Roy Rogers Road and ending at Greenway Park. Construction is scheduled to begin in 2022.

Visit www.ourreliablewater.org/mpe for more information.

Procurement & Business Opportunities

The WWSP staff are preparing for several upcoming professional services and construction contractor procurements. Listed below are active procurements and upcoming events and procurements. Procurement opportunities are also published at <http://www.ourreliablewater.org/business-opportunities>.

Active Procurements

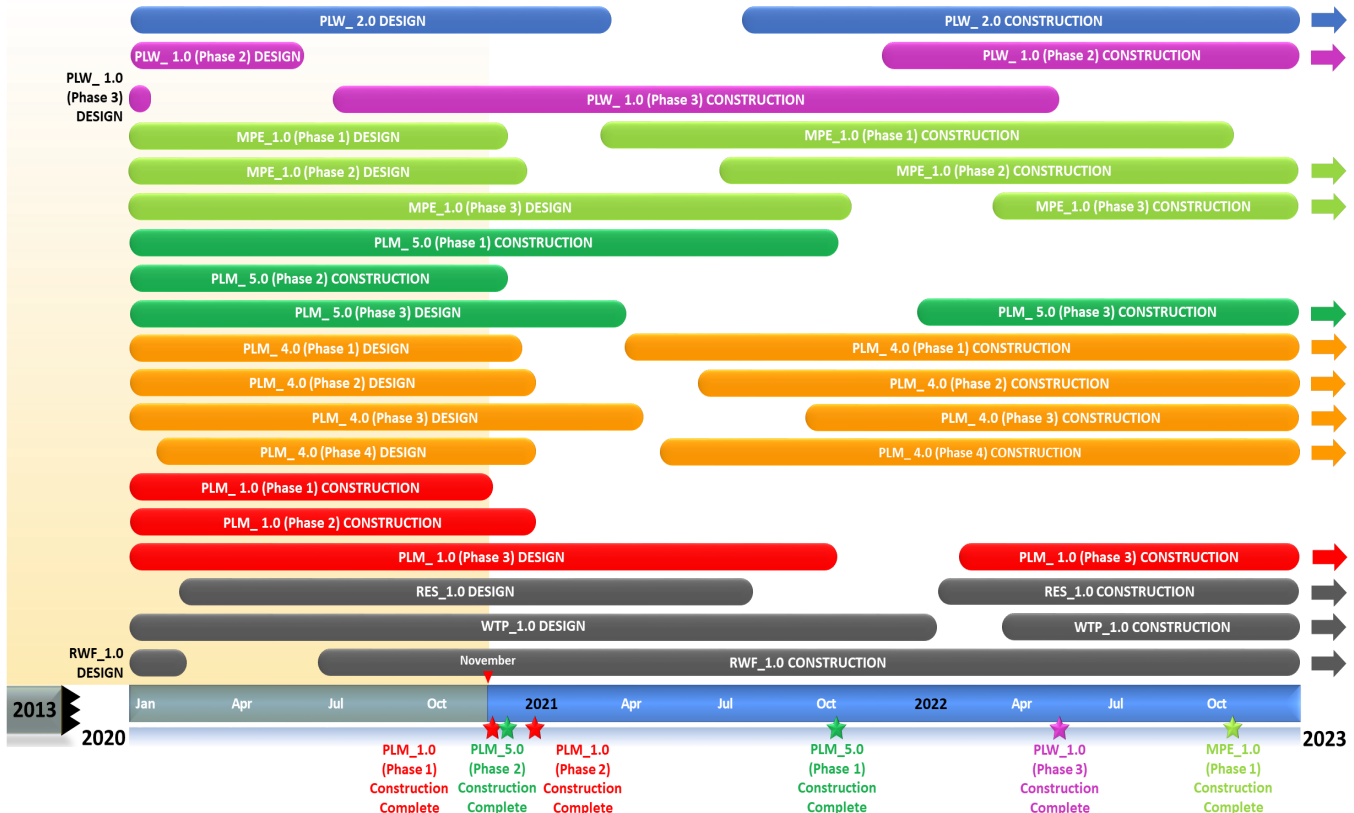
- Metzger Pipeline East (MPE_1.1) Construction Invitation to Bid (ITB) by City of Beaverton (Quarter 4, 2020)

Upcoming Procurements

- Tualatin-Sherwood Area Pipeline (PLM_4.1) Construction ITB by Washington County (Quarter 1, 2021)
- Metzger Pipeline East (MPE_1.2) Best Value Notice for Construction Contract (Quarter 1, 2021)
- Tualatin-Sherwood Area Pipeline (PLM_4.2) Construction ITB by Washington County (Quarter 1, 2021)
- Tualatin-Sherwood Area Pipeline (PLM_4.4) Construction ITB by Washington County (Quarter 1, 2021)

Schedule Summary

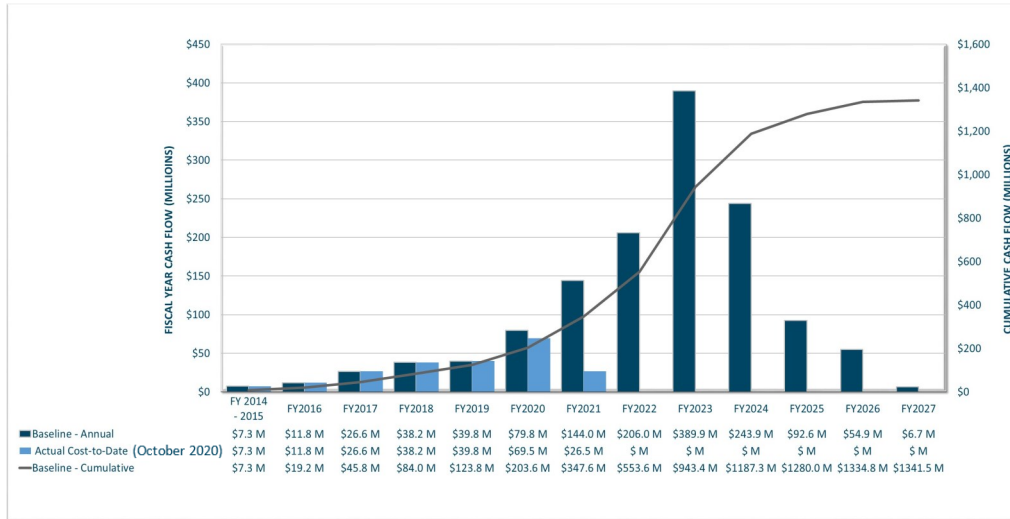
WWSP design and planning began in 2013; the Willamette Water Supply System is expected to be in service by July 2026. Below are the major milestones and activities forecasted from 2020 to 2023*. The WWSP team is committed to on-time delivery. See page 4 for descriptions of the projects referenced below.



*The actual order and duration of projects continues to be refined and is subject to change.

Forecast Cost Summary

The graph below illustrates the projected WWSP cash flow by fiscal year (FY July 1 to June 30)*. The cumulative cash flow establishes the budgeted \$1.3 billion, which accounts for actual and current projected costs, including projected escalation in the cost of labor, materials, and equipment required to build WWSP projects.



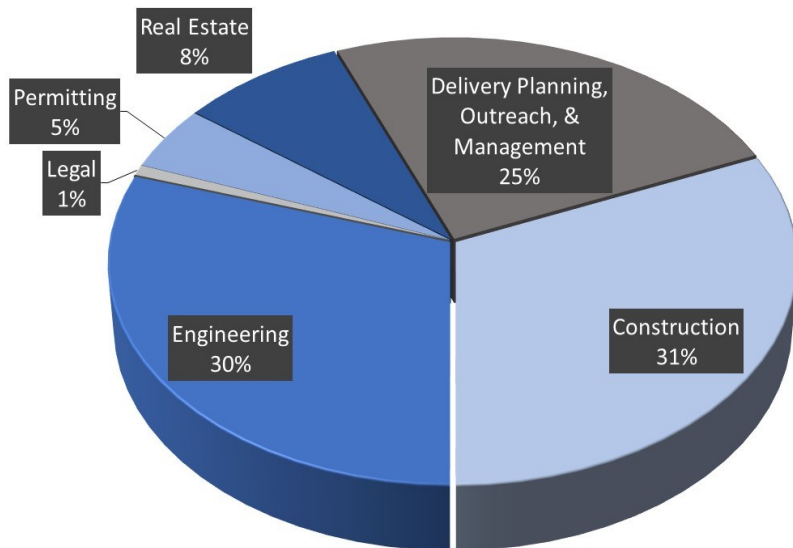
Costs to date for FY 2021 are \$27 million. Cumulative costs are projected to be \$337 million through the end of FY 2021.

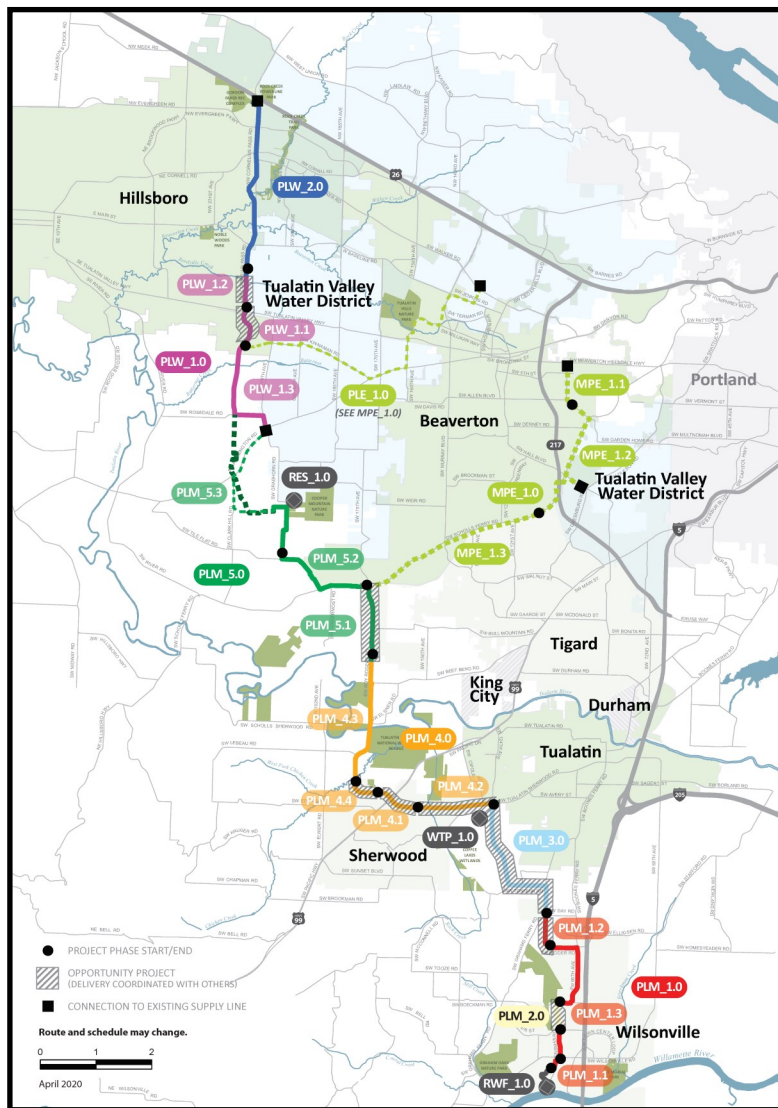
**Data continues to be refined and is subject to change.*

Cumulative Cost Summary

WWSP cumulative costs are tracked and updated monthly. The chart below summarizes the distribution of cumulative costs through October 2020.

Cumulative Water Supply Program costs to date are approximately \$220 million, with the majority spent on planning, engineering, construction, and real estate activities.





PLW_2.0 Cornelius Pass Pipeline Project
(Frances Road to Highway 26)

Description: 3.3-mile water pipeline along Cornelius Pass Rd. from Frances St. to Hwy 26; connects to existing supply lines for City of Hillsboro and TVWD.
Status: Design

PLW_1.0 South Hillsboro Area Pipeline Project
(Farmington Road to Frances Street)

Description: 4-mile water pipeline from SW Farmington Rd. at SW 209th Ave. to Cornelius Pass Rd. at Frances St.
Status: Phase 1: Complete; Phase 2: Design; Phase 3: Construction

MPE_1.0 Metzger Pipeline East Project
(Roy Rogers Road to Beaverton Hillsdale Hwy)

Description: 7.3-mile water pipeline to be built in lieu of PLE_1.0 along SW Scholls Ferry Rd. between SW Roy Rogers Rd. and Allen Blvd.; connects to Metzger service area at SW Oleson Rd. and TVWD's system.
Status: Phase 1: Design; Phase 2: Design; Phase 3: Design

RES_1.0 South Beaverton Area Water Storage Tanks
(Storage Tanks)

Description: Two 15-million gallon storage tanks located on Cooper Mountain.
Status: Design

PLM_5.0 Scholls Area Pipeline Project
(North of Beef Bend Road to Farmington Road)

Description: 7-mile water pipeline from SW Roy Rogers Rd. 0.5-mile north of SW Beef Bend Rd. to SW Farmington Rd. at SW 209th Ave.
Status: Phase 1: Construction; Phase 2: Construction; Phase 3: Design

PLM_4.0 Tualatin-Sherwood Area Pipeline Project
(SW 124th Avenue to north of Beef Bend Road)

Description: 5.2-mile water pipeline from 124th Ave. at SW Tualatin Sherwood Rd. along SW Roy Rogers Rd. to 0.5 miles north of SW Beef Bend Rd.
Status: Phase 1: Design; Phase 2: Design; Phase 3: Design; Phase 4: Design

PLM_3.0 124th Avenue Partnership Project
(SW 124th Avenue Extension)

Description: 2.7-mile water pipeline from Grahams Ferry Rd. at Day Rd. to 124th Ave. at SW Tualatin Sherwood Rd.
Status: Complete

PLM_2.0 Kinsman Road Partnership Project
(Kinsman Road Extension)

Description: 0.6-mile water pipeline along Kinsman Rd. between Barber St. and Boeckman Rd.
Status: Complete

PLM_1.0 Wilsonville Area Pipeline Project
(WRWTP to Day Road)

Description: 3.3-mile water pipeline from WRWTP to intersection of SW Garden Acres Rd. at Day Rd.
Status: Phase 1: Construction; Phase 2: Construction; Phase 3: Design

WTP_1.0 Willamette Water Supply System Water Treatment Plant
(Water Treatment Plant (WTP))

Description: 60-million gallon per day water treatment plant (WTP_1.0), including a finished water pump station (FPS_1.0) and a control system (DCS_1.0) located near Sherwood.

Status: Design (WTP, FPS, DCS)

RWF_1.0 Raw Water Facilities Expansion
(Raw Water Facilities (RWF) Expansion)

Description: Expansion of the existing raw water pump station and intake at the Willamette River WTP (WRWTP) in Wilsonville to 60 million gallons per day of initial capacity for the Willamette Water Supply System.

Status: Design

The mid-Willamette River at Wilsonville is the supply source for the WWSS. The system consists of modifying the existing river intake and expanding pumping capacity, building more than 30 miles of drinking water pipeline, reservoir storage facilities on Cooper Mountain, and a new WTP in Sherwood.

For more information about the WWSP, visit www.ourreliablewater.org or call 503.941.4570.

For additional schedule information, go to page 3 of this report, or www.ourreliablewater.org.