

**Our Future Water Supply**

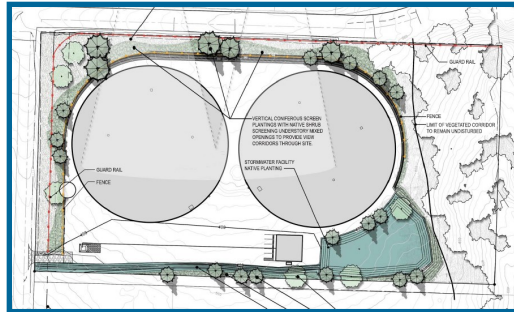
The Willamette Water Supply System Commission (WWSS Commission) is an Oregon intergovernmental entity formed by Tualatin Valley Water District (TVWD), the City of Hillsboro, and the City of Beaverton. The WWSS Commission was formed to build the Willamette Water Supply System (WWSS) in response to planned growth in their service areas. TVWD has been designated the Managing Agency for the WWSS Commission, and TVWD operates the Willamette Water Supply Program (WWSP) to plan, design, and construct the WWSS. The WWSS will provide an additional resilient water supply for Washington County. When complete, the WWSS will be one of Oregon’s most seismically-resilient water systems—built to better withstand natural disasters, protect public health, and speed regional economic recovery through restoring critical services more quickly. The new system will be completed by 2026.

**Willamette Water Supply**  
*Our Reliable Water*

Monthly Progress Report

Month End September 2020

**South Beaverton Area Water Storage Tanks**



RES\_1.0 layout from preliminary design

The South Beaverton Area Water Storage Tanks (RES\_1.0) project consists of two new 15 million gallon (MG), pre-stressed concrete water tanks. They will be located east of SW Grabhorn Road and south of SW Stonecreek Drive on Cooper Mountain, near the western edge of the City of Beaverton. The water tanks will store treated water from the new Willamette Water Supply System (WWSS) Water Treatment Plant (WTP\_1.0). From the tanks, water will be delivered by gravity to homes and businesses within the TVWD and the cities of Hillsboro and Beaverton service areas.

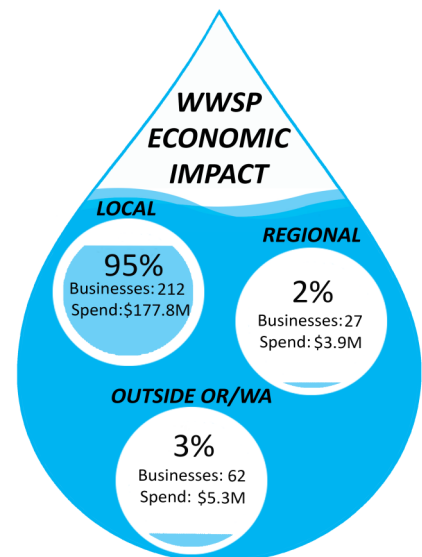
A Construction Manager/ General Contractor (CM/GC) contracting approach will be used to deliver the RES\_1.0 project in conjunction with the Scholls Area Pipeline (PLM\_5.3) project. This approach allows the Willamette Water Supply Program (WWSP) to streamline construction activities, efficiently coordinate among specialty contractors, minimize site and schedule constraints, and manage rock removal.

The selected CM/GC contractor will divide work into several bidding opportunities for qualified businesses to submit competitive bids or proposals. The bidding results will be used to prepare a guaranteed maximum price (GMP) for the project. Under this approach, the selected CM/GC contractor will manage overall procurement and construction with oversight from WWSP staff. The CM/GC contractor will also be required to competitively bid work it proposes to self-perform.

The RES\_1.0 CM/GC Request for Proposal (RFP) has been issued. Construction is anticipated to start at the beginning of 2022.

**WWSP Economic Contribution**

The WWSP is positively contributing to the Oregon and Washington regional economy with more than \$185 million spent through June 30, 2020. Approximately 212 local businesses (located in counties within 50 miles of the WWSP project site) and 27 regional businesses (located outside the local area but within Oregon or Washington) have participated in the Program. The 62 other businesses that are located outside Oregon and Washington are also contributing a positive effect on the local economy, as many of their employees live and work in the local area and generate local benefits through the purchase of goods, services, and other activities.



Data through Q2 2020

## Procurement & Business Opportunities

The WWSP staff are preparing for several upcoming professional services and construction contractor procurements. Listed below are active procurements and upcoming events and procurements. Procurement opportunities are also published at <http://www.ourreliablewater.org/business-opportunities>.

### Active Procurements

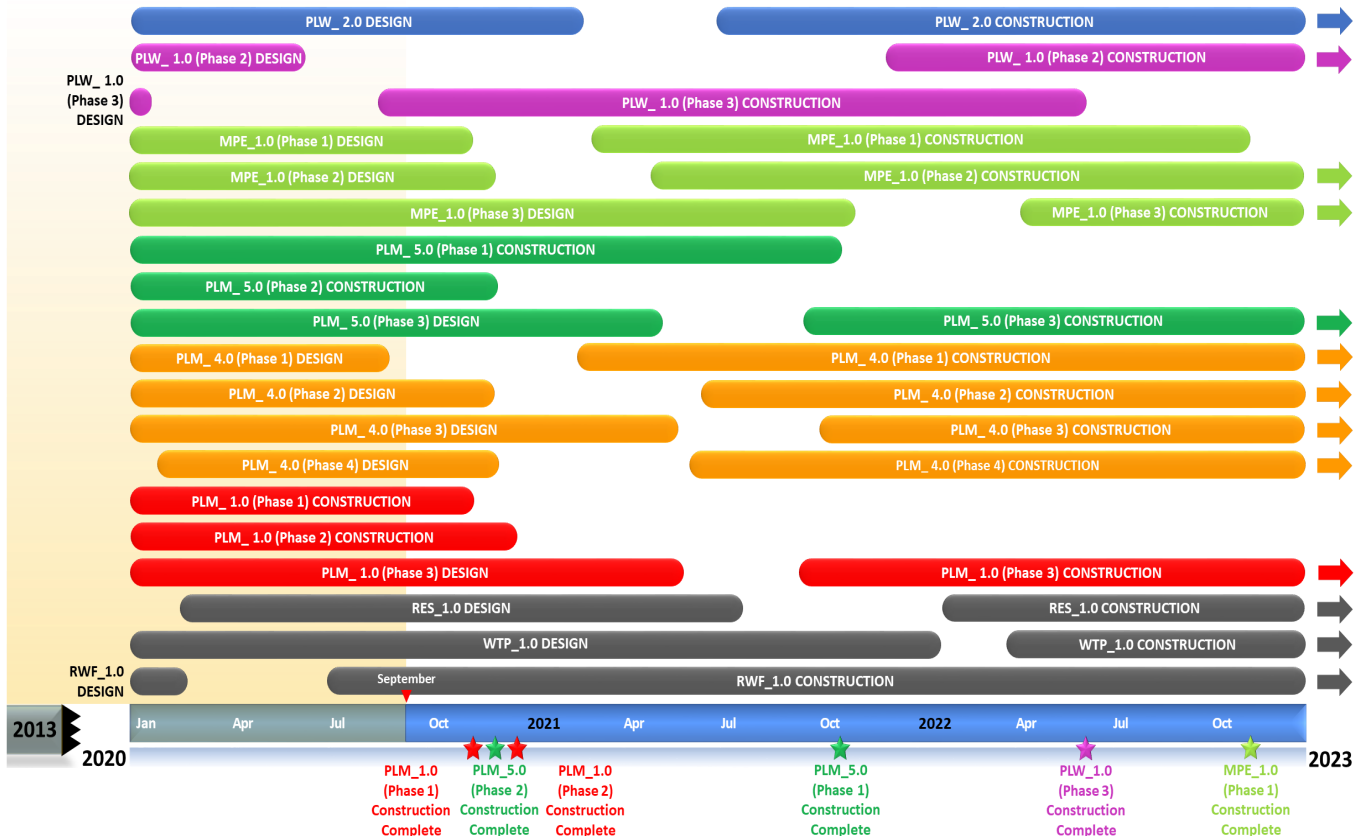
- South Beaverton Area Water Storage Tanks (RES\_1.0)/Scholls Area Pipeline (PLM\_5.3) Construction Manager/General Contractor (CM/GC) Request for Proposal (RFP) (Quarter 3, 2020)

### Upcoming Procurements

- Tualatin-Sherwood Area Pipeline (PLM\_4.1) Construction Invitation to Bid (ITB) by Washington County (Quarter 4, 2020)
- Metzger Pipeline East (MPE\_1.1) Construction ITB by City of Beaverton (Quarter 4, 2020)
- Metzger Pipeline East (MPE\_1.2) Design Request for Proposal (RFP) (Quarter 4, 2020)

## Schedule Summary

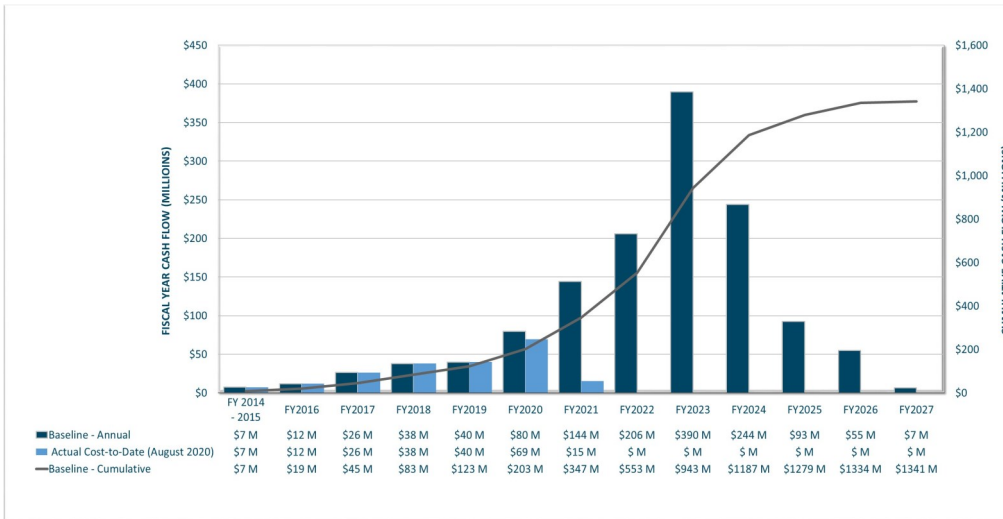
WWSP design and planning began in 2013; the Willamette Water Supply System is expected to be in service by July 2026. Below are the major milestones and activities forecasted from 2020 to 2023\*. The WWSP team is committed to on-time delivery. See page 4 for descriptions of the projects referenced below.



\*The actual order and duration of projects continues to be refined and is subject to change.

## Forecast Cost Summary

The graph below illustrates the projected WWSP cash flow by fiscal year (FY July 1 to June 30)\*. The cumulative cash flow establishes the budgeted \$1.3 billion, which accounts for actual and current projected costs, including projected escalation in the cost of labor, materials, and equipment required to build WWSP projects.



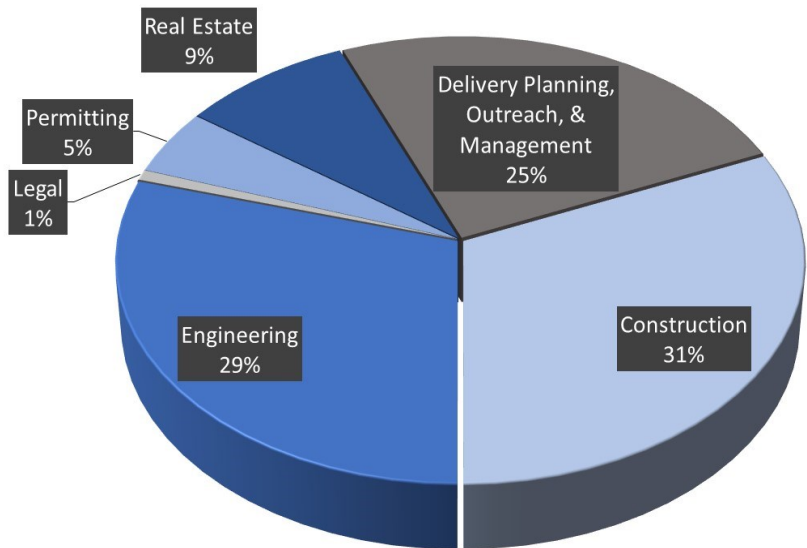
Costs to date for FY 2021 are \$15 million. Cumulative costs are projected to be \$347 million through the end of FY 2021.

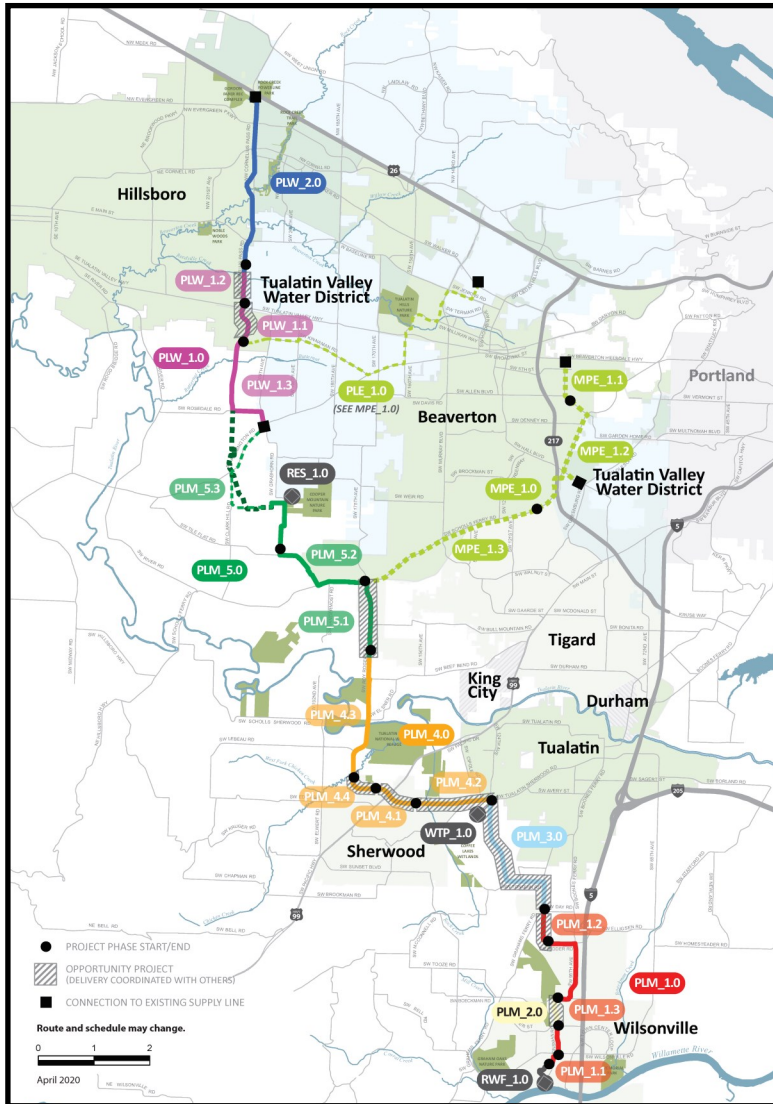
*\*Data continues to be refined and is subject to change.*

## Cumulative Cost Summary

WWSP cumulative costs are tracked and updated monthly. The chart below summarizes the distribution of cumulative costs through August 2020.

**Cumulative Water Supply Program costs to date are approximately \$207 million, with the majority spent on planning, engineering, construction, and real estate activities.**





- WTP\_1.0 Willamette Water Supply System Water Treatment Plant (Water Treatment Plant (WTP))**  
*Description:* 60-million gallon per day water treatment plant (WTP\_1.0), including a finished water pump station (FPS\_1.0) and a control system (DCS\_1.0) located near Sherwood.  
*Status:* Design Phase (WTP/FPS Construction Start: 03/2022) Design Phase (DCS Construction Start: 03/2022)
- FPS\_1.0**
- DCS\_1.0**
- RWF\_1.0 Raw Water Facilities Expansion (Raw Water Facilities (RWF) Expansion)**  
*Description:* Expansion of the existing raw water pump station and intake at the Willamette River WTP (WRWTP) in Wilsonville to 60 million gallons per day of initial capacity for the Willamette Water Supply System.  
*Status:* Design Phase (Construction Start: 06/2020)

The mid-Willamette River at Wilsonville is the supply source for the WWSS. The system consists of modifying the existing river intake and expanding pumping capacity, building more than 30 miles of drinking water pipeline, reservoir storage facilities on Cooper Mountain, and a new WTP in Sherwood.

For more information about the WWSP, visit [www.ourreliablewater.org](http://www.ourreliablewater.org) or call 503.941.4570.

**PLW\_2.0 Cornelius Pass Pipeline Project (Frances Road to Highway 26)**  
*Description:* 3.3-mile water pipeline along Cornelius Pass Rd. from Frances St. to Hwy 26; connects to existing supply lines for City of Hillsboro and TVWD.  
*Status:* Design Phase (Construction Start: 06/2021)

**PLW\_1.0 South Hillsboro Area Pipeline Project (Farmington Road to Frances Street)**  
*Description:* 4-mile water pipeline from SW Farmington Rd. at SW 209th Ave. to Cornelius Pass Rd. at Frances St.  
*Status:* Construction Phase (Phase 1: Complete; Phase 2 Start: 11/2021; Phase 3 Complete: 05/2022)

**MPE\_1.0 Metzger Pipeline East Project (Roy Rogers Road to Beaverton Hillsdale Hwy)**  
*Description:* 7.3-mile water pipeline to be built in lieu of PLE\_1.0 along SW Scholls Ferry Rd. between SW Roy Rogers Rd. and Allen Blvd.; connects to Metzger service area at SW Oleson Rd. and TVWD's system.  
*Status:* Design Phase (Construction Start Phase 1: 02/2021; Phase 2: 04/2021; Phase 3: 03/2022)

**RES\_1.0 South Beaverton Area Water Storage Tanks (Storage Tanks)**  
*Description:* Two 15-million gallon storage tanks located on Cooper Mountain.  
*Status:* Design Phase (Construction Start: 01/2022)

**PLM\_5.0 Scholls Area Pipeline Project (North of Beef Bend Road to Farmington Road)**  
*Description:* 7-mile water pipeline from SW Roy Rogers Rd. 0.5-mile north of SW Beef Bend Rd. to SW Farmington Rd. at SW 209th Ave.  
*Status:* Construction Phase (Phase 1 Complete: 10/2021; Phase 2 Complete: 11/2020; Phase 3 Start: 10/2021)

**Tualatin-Sherwood Area Pipeline Project (SW 124th Avenue to north of Beef Bend Road)**  
*Description:* 5.2-mile water pipeline from 124th Ave. at SW Tualatin Sherwood Rd. along SW Roy Rogers Rd. to 0.5 miles north of SW Beef Bend Rd.  
*Status:* Design Phase (Phase 1 Construction Start: 02/2021; Phase 2 Start: 06/2021; Phase 3 Start: 9/2021; Phase 4 Start: 05/2021)

**124th Avenue Partnership Project (SW 124th Avenue Extension)**  
*Description:* 2.7-mile water pipeline from Grahams Ferry Rd. at Day Rd. to 124th Ave. at SW Tualatin Sherwood Rd.  
*Status:* Complete

**Kinsman Road Partnership Project (Kinsman Road Extension)**  
*Description:* 0.6-mile water pipeline along Kinsman Rd. between Barber St. and Boeckman Rd.  
*Status:* Complete

**Wilsonville Area Pipeline Project (WRWTP to Day Road)**  
*Description:* 3.3-mile water pipeline from WRWTP to the intersection of SW Garden Acres Rd. at Day Rd.  
*Status:* Construction Phase (Phase 1 Complete: 10/2020; Phase 2 Complete: 12/2022; Phase 3 Start: 9/2021)