

**Willamette Water Supply**  
*Our Reliable Water*

The background features several overlapping, wavy blue lines that create a sense of water or a landscape. The colors range from a light sky blue to a deeper cerulean blue.

# Morey's Landing HOA

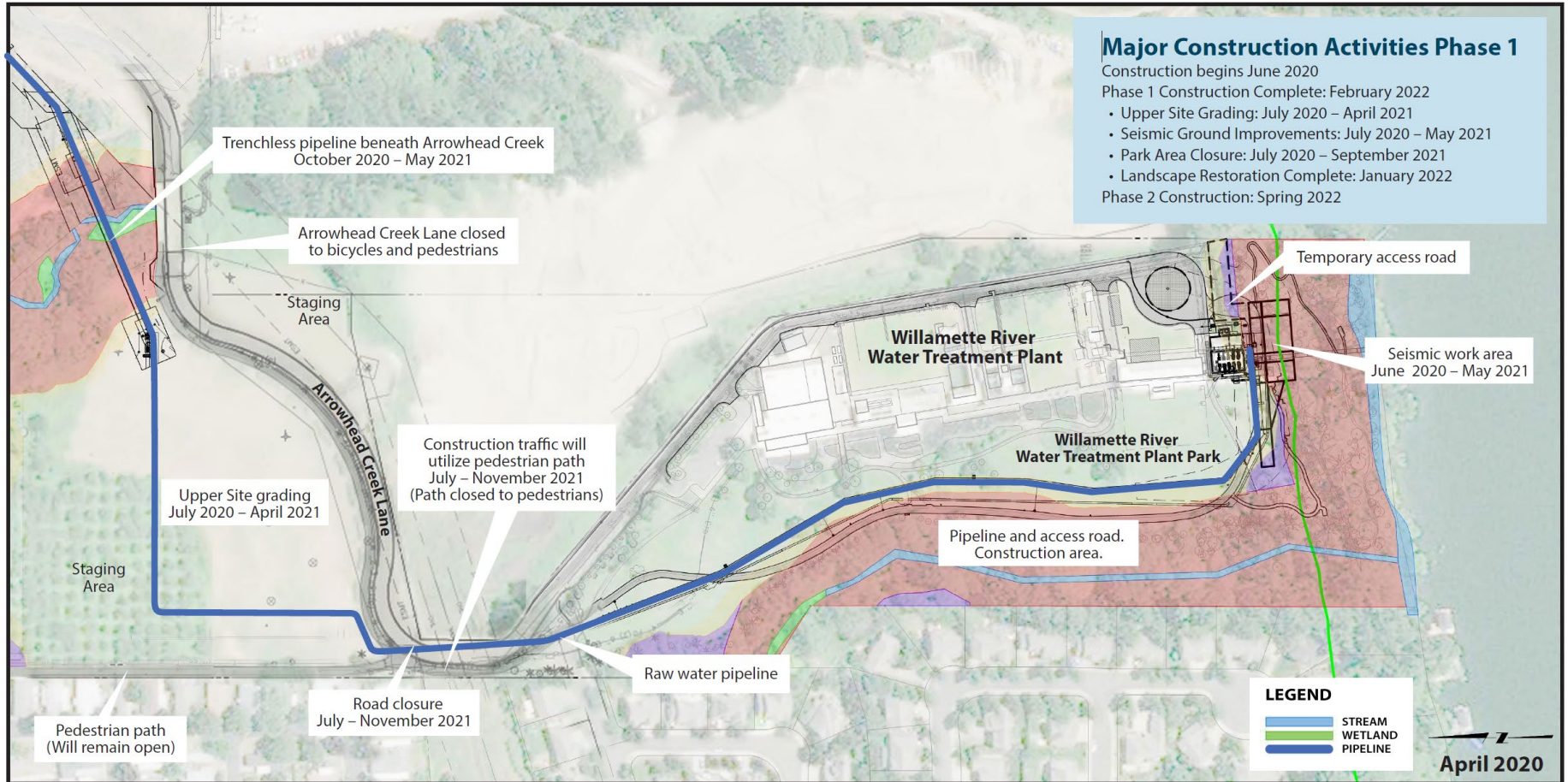
Tuesday, February 5, 2020

# Raw Water Facilities Components

In coordination with the City of Wilsonville:

- **Improved pump station**
- **Seismically reinforce the Willamette River bank**
- **Increased intake capacity**
- **New electrical building and standby power**
- **A new raw water pipeline**

# Raw Water Facilities




# Outreach Plan

Drafted outreach plan and short-term action plan in coordination with City staff

RWF_1.0 DRAFT OUTREACH EFFORT 1.31.18		
Short Term Tasks (Oct.-Dec. 31)	Date	Lead
Delora to send documents in the public realm. Met with each council members about IGA. November 20 will be first time IGA becomes public.	ASAP	Delora
Draft one pager describing impacts including: <ul style="list-style-type: none"> <li>• Marlys point of contact</li> <li>• 8-5 M-F</li> <li>• Avoid Thanksgiving and the day after</li> <li>• Willamette Water Supply identified as project owner</li> <li>• Geotech and survey work for next two months</li> </ul>	ASAP	Marlys/David
One pager review	Aiming for Friday, Nov. 27	Jenn, Delora, Mark
Mail one pager to every residence in Morey's Landing NA boundary (plus HOA contact)	No later than Oct. 30	Marlys/David
Knock on doors of most directly impacted neighbors and distribute one pager	November 2, 3	Marlys, David
Press release about park impacts with both logos	November 2, 3	Mark to draft, Marlys as contact
Draft and post temporary signs at entrance to the park at parking lot, where trail intersections Jobsy lane, and Brockway Street; more permanent signs installed Friday, Nov. 17	By November 2, 3	Marlys/David/Mark
Attend upcoming Morey's Landing HOA board meeting (first Tuesday of every month at 6 p.m. at WRWTP); November 7	Tuesday, November 7 (if time available on agenda)	Mark to make initial contact then loop in Marlys
LONGER TERM (early 2018)		
Finalize WIF fact sheet/map	Date	Lead
Set up RWF project page on WWSP website and share with City of Wilsonville and post fact sheet/ map (WIF website to be hosted by TVWD)	After WGG group negotiating the WIF IGA	Marlys/David; final drafts with Niki
	After WGG group negotiating the WIF IGA	After RWF fact sheet is complete and approved



# Public Outreach Activities to Date



**Willamette Water Supply**  
Our Reliable Water

**Willamette River Water Treatment Plant Park Survey Work**

The Willamette Water Supply Program, in coordination with the City of Wilsonville, plans to conduct survey work and geotechnical testing in the Willamette River Water Treatment Plant Park.

You may notice drill rigs in the park, in the Water Treatment Plant parking area, and near the western edge of the park near the end of the Tonquin Ice Age Trail. There may also be occasional blocked access to the pathway. We apologize for any inconvenience to neighbors, and seek to keep the park open for use.

Results of this work helps us plan future water facility improvements.

Work is scheduled for completion by January 1, 2018.

For your safety, please stay away from equipment and related hazards that are clearly marked.

Geotechnical drilling includes:



- Drill rigs conduct soil sampling Monday through Friday, between 8 a.m. and 5 p.m.
- Drill rigs are stationed at each boring location for one or two days
- Drill rigs are fenced-off for safety at night after work hours
- Drilling does not occur on national or school holidays, such as Veterans Day, Thanksgiving, etc.

Survey work includes:

- Staff survey the site on foot and may mark the ground with paint or install small stakes

Visit [www.OurReliableWater.org/ourwater/](http://www.OurReliableWater.org/ourwater/) to see a map of the geotechnical boring locations.

**Learn More**  
[OurReliableWater.org](http://OurReliableWater.org)  
 503-941-4570  
[info@ourreliablewater.org](mailto:info@ourreliablewater.org)

A drill rig will soon be sampling soils in the Willamette River Water Treatment Plant Park.

**Our Future Water Supply**

Tualatin Valley Water District (TVWD) and the City of Hillsboro are partnering with the City of Wilsonville and others to develop the mid-Willamette River at Hillsboro as an additional water supply. When completed in 2028, this new system will be one of Oregon's most seasonally-resilient drinking water systems—built to better withstand natural disasters, protect public health, and provide a stable water supply for present and future generations. TVWD and City of Hillsboro ratepayers are paying for this project.

**Willamette Water Supply**  
Our Reliable Water

**Willamette River Water Treatment Plant Park Survey Work**

The Willamette Water Supply Program, in coordination with the City of Wilsonville, plans to conduct survey work and geotechnical testing in the Willamette River Water Treatment Plant Park.


You may notice drill rigs in the park, in the Water Treatment Plant parking area, and near the western edge of the park near the end of the Tonquin Ice Age Trail. There may also be occasional blocked access to the pathway. We apologize for any inconvenience to neighbors, and seek to keep the park open for use.

Results of this work helps us plan future water facility improvements.

Work is scheduled for completion by January 1, 2018.

For your safety, please stay away from equipment and related hazards that are clearly marked.

**Learn More**  
[www.OurReliableWater.org](http://www.OurReliableWater.org) | 503-941-4570 | [info@ourreliablewater.org](mailto:info@ourreliablewater.org)

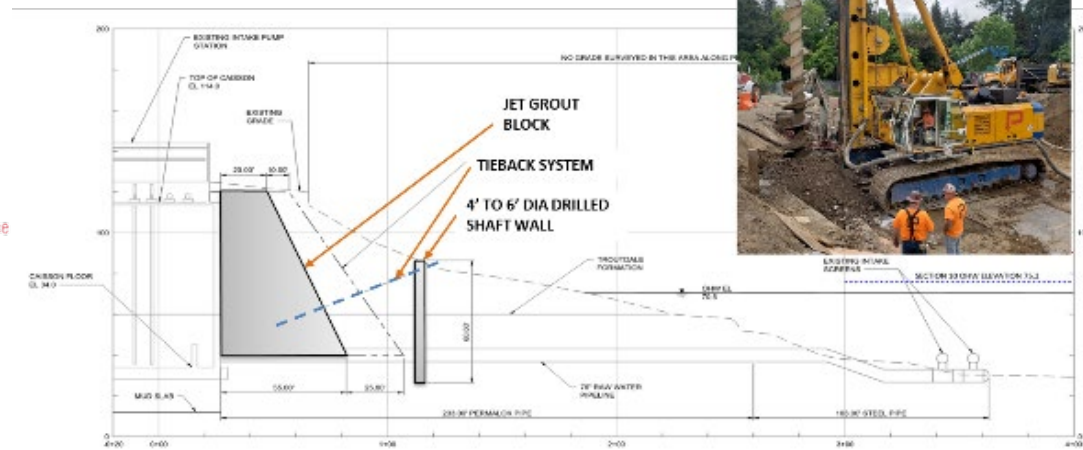
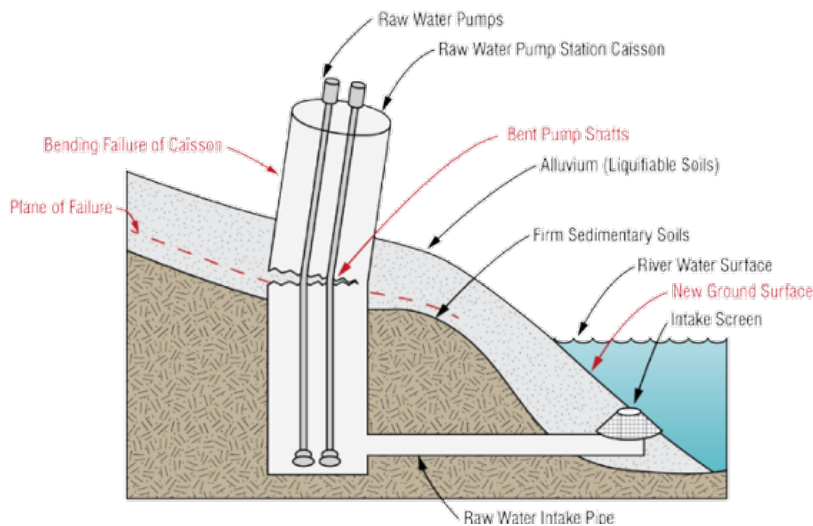


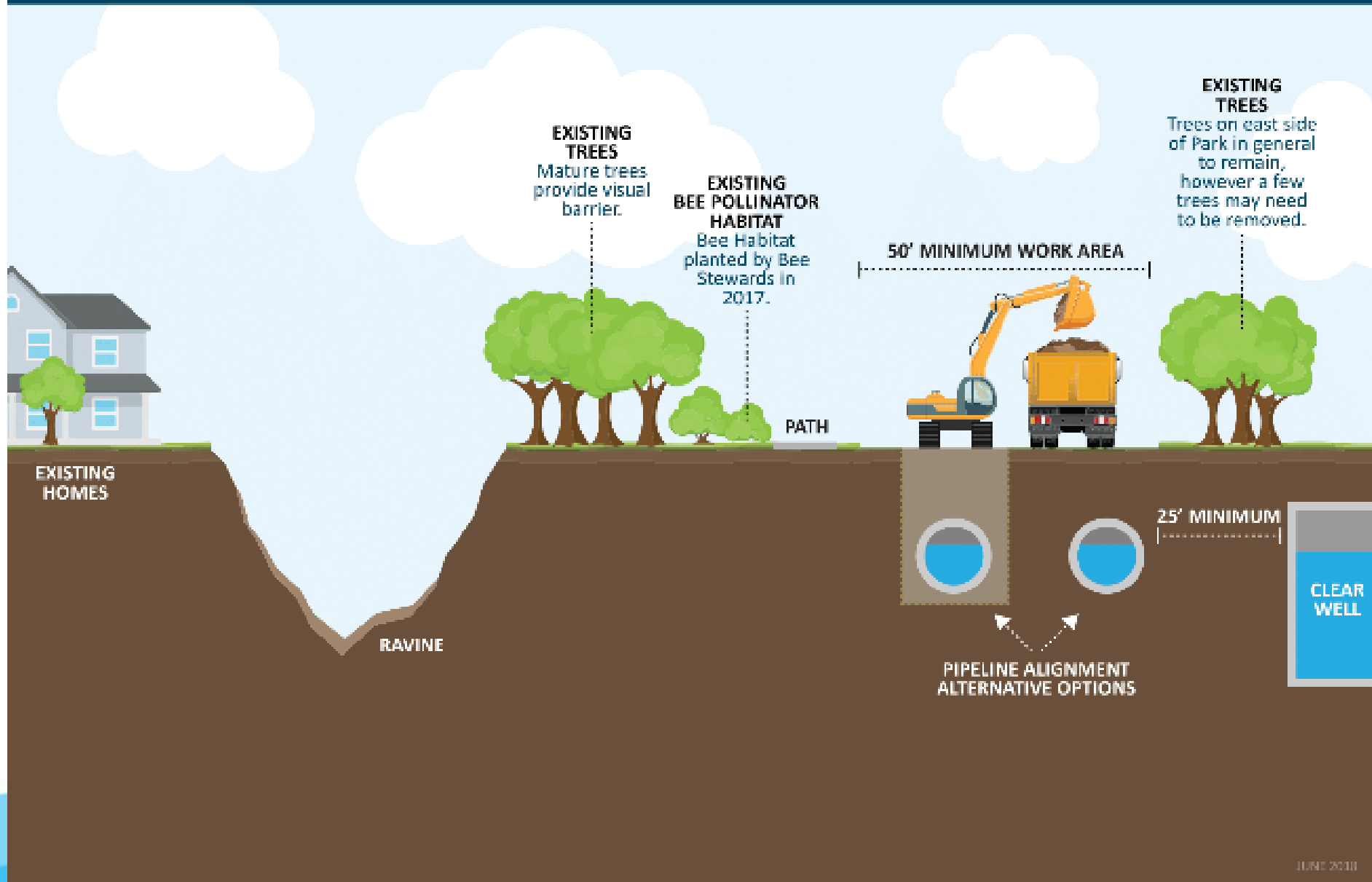
- Met with Wilsonville Parks Board 2018 and 2019
- Sent mailers in advance of site work
- Conducted door knocking
- Attended Morey's Landing HOA meeting in 2017 and 2019
- Wrote and published Joint press release and Boones Ferry Messenger articles
- Posted park signs
- Land use approval

# Raw Water Facilities

Subduction earthquake (long-duration ground shaking): existing conditions

Lateral displacement of caisson





Email [marlys@tvwd.org](mailto:marlys@tvwd.org)

Hotline 503-941-4570

Website [www.ourreliablewater.org](http://www.ourreliablewater.org)

YouTube Willamette Water 

Twitter @WillametteWater 

