

Our Future Water Supply

The Willamette Water Supply System Commission (WWSS Commission) is an Oregon intergovernmental entity formed by Tualatin Valley Water District (TVWD), the City of Hillsboro, and the City of Beaverton. The WWSS Commission was formed to build the Willamette Water Supply System (WWSS) in response to planned growth in their service areas. TVWD has been designated the Managing Agency for the WWSS Commission, and TVWD operates the Willamette Water Supply Program (WWSP) to plan, design, and construct the WWSS. The WWSS will provide an additional resilient water supply for Washington County. When complete, the WWSS will be one of Oregon’s most seismically-resilient water systems—built to better withstand natural disasters, protect public health, and speed regional economic recovery through restoring critical services more quickly. The new system will be completed by 2026.

Willamette Water Supply

Our Reliable Water

Monthly Progress Report

Month End January 2020

2020: Advancing Construction

The Willamette Water Supply Program continues to transition more projects from design to construction in 2020. Staff are focused on meeting critical design schedules to advance construction of the overall system. Below is an overview of some of the planned activities and milestones in 2020:

- Break ground on the first phase of construction for the Raw Water Facilities.
- Begin construction on three projects and near completion of construction on four projects.
- Progress design of the Water Treatment Plant and 10 other projects.
- Continue real estate acquisitions and land-use permitting.

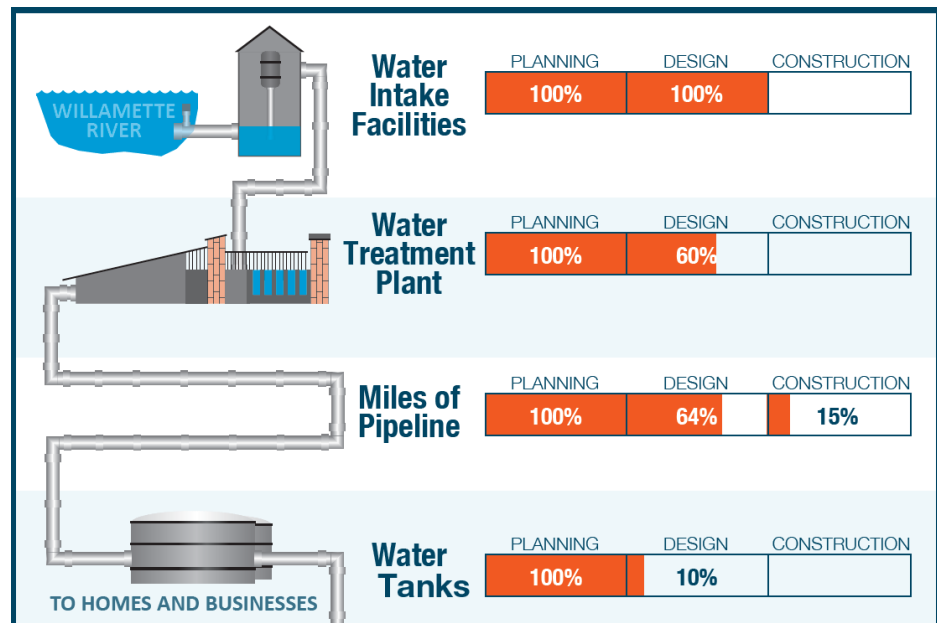
- Continue community outreach through open houses, booths at community activities, and business outreach events.



Installation of pipe for Scholls Area Pipeline Project (Phase 2)

Delivery Progress

Leadership is committed to designing and building an additional source of quality drinking water to supply to residents and businesses by 2026. With the help of qualified designers and contractors, work on the WWSS is proceeding on time. Below is an illustration of progress (percentage complete) from inception to the beginning of 2020.



Procurement & Business Opportunities

The WWSP staff are preparing for several upcoming professional services and construction contractor procurements. Listed below are active procurements and upcoming events and procurements. Procurement opportunities are also published at <http://www.ourreliablewater.org/business-opportunities>.

Active Procurements

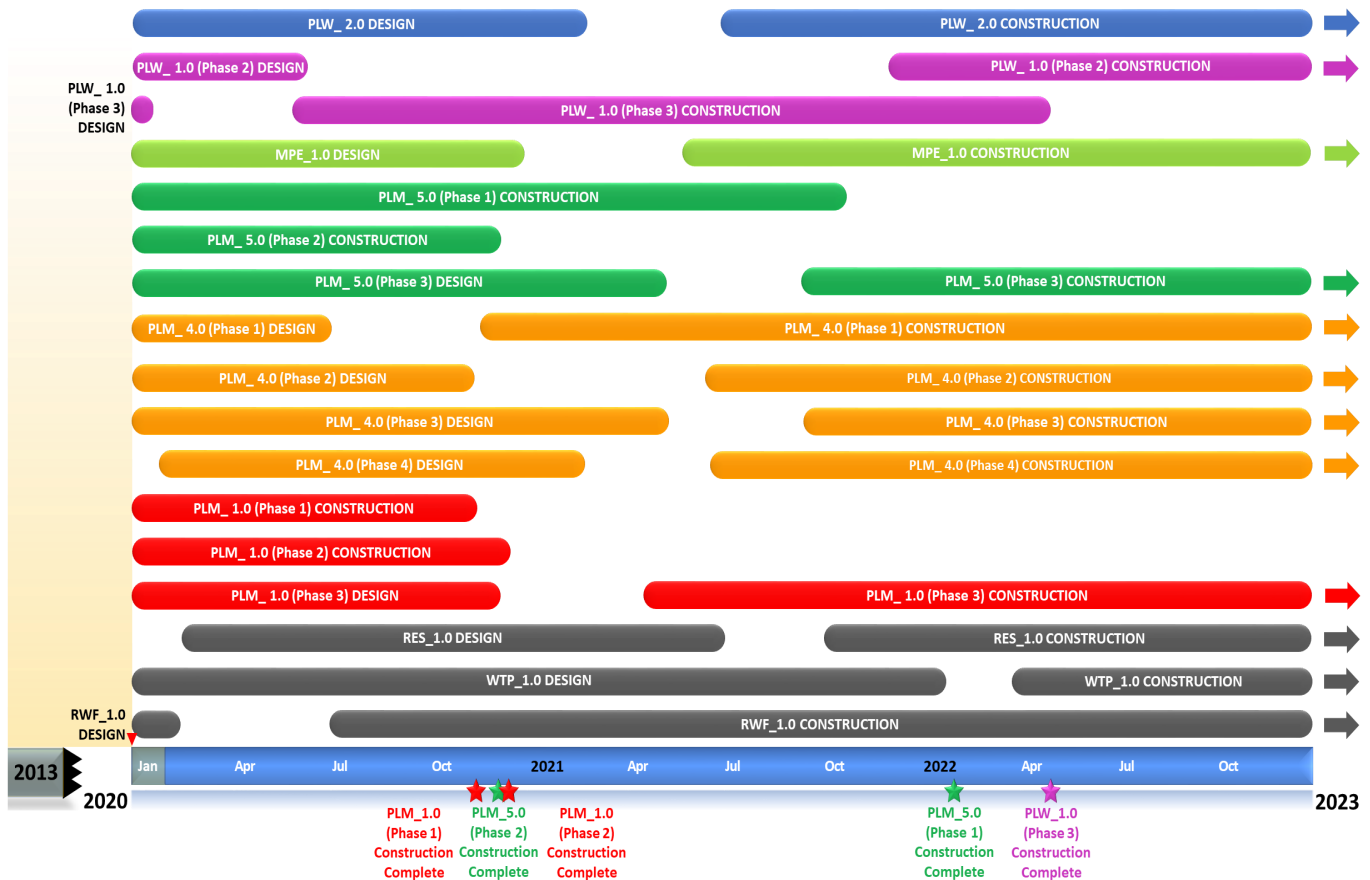
- Raw Water Facilities (RWF_1.0) Phase 1 Construction Guaranteed Maximum Price (GMP) (Quarter 1, 2020)
- South Hillsboro Area Pipeline (PLW_1.3) Construction Request for Proposal (RFP) (Quarter 1, 2020)

Upcoming Procurements

- Tualatin-Sherwood Area Pipeline (PLM_4.1) Construction Invitation to Bid (ITB) by Washington County (Quarter 3, 2020)

Schedule Summary

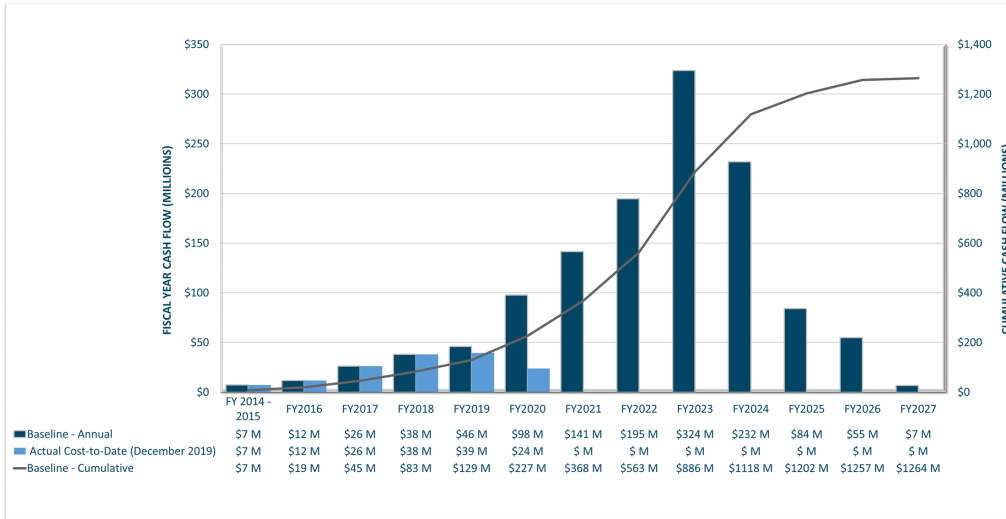
WWSP design and planning began in 2013; the Willamette Water Supply System is expected to be in service by July 2026. Below are the major milestones and activities forecasted from 2020 to 2023*. The WWSP team is committed to on-time delivery. See page 4 for descriptions of the projects referenced below.



*The actual order and duration of projects continues to be refined and is subject to change.

Forecast Cost Summary

The graph below illustrates the projected WWSP cash flow by fiscal year (FY July 1 to June 30)*. The cumulative cash flow establishes the budgeted \$1.3 billion, which accounts for actual and current projected costs, including projected escalation in the cost of labor, materials, and equipment required to build WWSP projects.



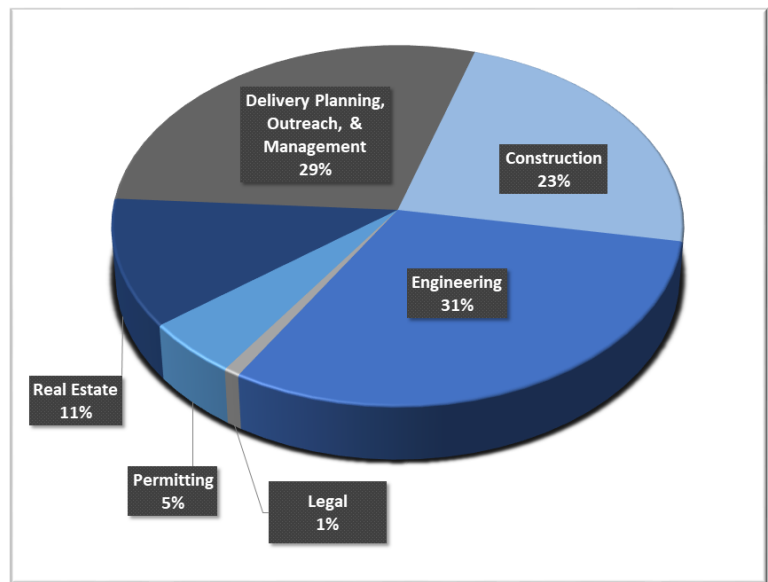
Costs to date for FY 2020 are \$24 million. Cumulative costs are projected to be \$227 million through the end of FY 2020.

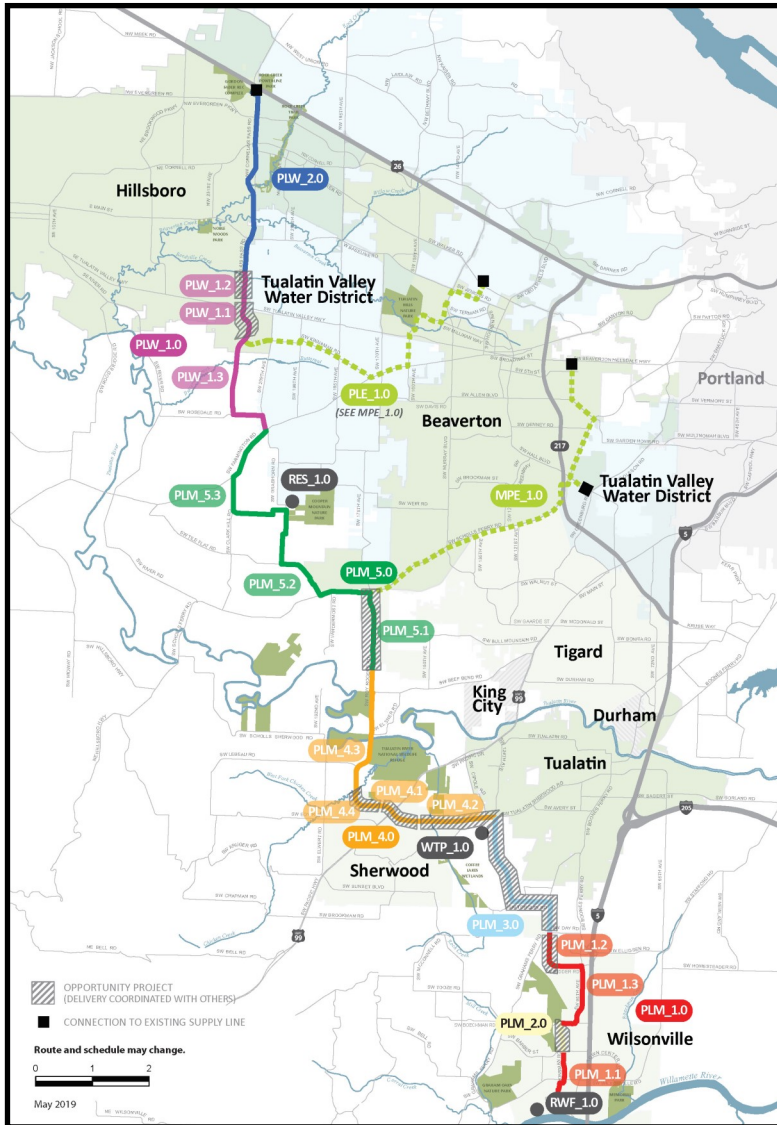
**Data continues to be refined and is subject to change.*

Cumulative Cost Summary

WWSP cumulative costs are tracked and updated monthly. The chart below summarizes the distribution of cumulative costs through December 2019.

Cumulative Water Supply Program costs to date are approximately \$147 million, with the majority spent on planning, engineering, construction, and real estate activities.





WTP_1.0 Willamette Water Supply System Water Treatment Plant (Water Treatment Plant (WTP))

Description: 60-million gallon per day water treatment plant (WTP_1.0), including a finished water pump station (FPS_1.0) and a control system (DCS_1.0) located near Sherwood.

Status: Design Phase (WTP/FPS Construction Start: 03/2022)
Design Phase (DCS Construction Start: 03/2022)

RWF_1.0 Raw Water Facilities Expansion (Raw Water Facilities (RWF) Expansion)

Description: Expansion of the existing raw water pump station and intake at the Willamette River WTP (WRWTP) in Wilsonville to 60 million gallons per day of initial capacity for the Willamette Water Supply System.
Status: Design Phase (Construction Start: 06/2020)

The mid-Willamette River at Wilsonville is the supply source for the WWSS. The system consists of modifying the existing river intake and expanding pumping capacity, building more than 30 miles of drinking water pipeline, reservoir storage facilities on Cooper Mountain, and a new WTP in Sherwood.

PLW_2.0 Cornelius Pass Pipeline Project (Frances Road to Highway 26)

Description: 3.3-mile water pipeline along Cornelius Pass Rd. from Frances St. to Hwy 26; connects to existing supply lines for City of Hillsboro and TVWD.
Status: Design Phase (Construction Start: 06/2021)

PLW_1.0 South Hillsboro Area Pipeline Project (Farmington Road to Frances Street)

Description: 3.9-mile water pipeline from SW Farmington Rd. at SW 209th Ave. to Cornelius Pass Rd. at Frances St.; and also east on Kinnaman Rd. between Cornelius Pass Rd. and SW 209th Ave.
Status: Construction Phase (Phase 1: Complete; Phase 2 Start: 11/2021; Phase 3 Start: 05/2020)

MPE_1.0 Metzger Pipeline East Project (Roy Rogers Road to Beaverton Hillsdale Hwy)

Description: 7.3-mile water pipeline to be built in lieu of PLE_1.0 along SW Scholls Ferry Rd. between SW Roy Rogers Rd. and Allen Blvd.; connects to Metzger service area at SW Oleson Rd. and TVWD's system.
Status: Design Phase (Construction Start: 05/2021)

RES_1.0 South Beaverton Area Water Storage Tanks (Storage Tanks)

Description: Two 15-million gallon storage tanks located on Cooper Mountain.
Status: Planning Phase (Design Start: 02/2020)

PLM_5.0 Scholls Area Pipeline Project (North of Beef Bend Road to Farmington Road)

Description: 7.2-mile water pipeline from SW Roy Rogers Rd. 0.5-mile north of SW Beef Bend Rd. to SW Farmington Rd. at SW 209th Ave.
Status: Construction Phase (Phase 1 Complete: 10/2021; Phase 2 Complete: 11/2020; Phase 3 Start: 09/2021)

PLM_4.0 Tualatin-Sherwood Area Pipeline Project (SW 124th Avenue to north of Beef Bend Road)

Description: 5.3-mile water pipeline from 124th Ave. at SW Tualatin Sherwood Rd. along SW Roy Rogers Rd. to 0.5 miles north of SW Beef Bend Rd.
Status: Design Phase (Phase 1 Construction Start: 11/2020; Phase 2 Start: 06/2021; Phase 3 Start: 9/2021; Phase 4 Start: 6/2021)

PLM_3.0 124th Avenue Partnership Project (SW 124th Avenue Extension)

Description: 2.7-mile water pipeline from Grahams Ferry Rd. at Day Rd. to 124th Ave. at SW Tualatin Sherwood Rd.
Status: Complete

PLM_2.0 Kinsman Road Partnership Project (Kinsman Road Extension)

Description: 0.5-mile water pipeline along Kinsman Rd. between Barber St. and Boeckman Rd.
Status: Complete

PLM_1.0 Wilsonville Area Pipeline Project (WRWTP to Day Road)

Description: 3.3-mile water pipeline from WRWTP to the intersection of SW Garden Acres Rd. at Day Rd.
Status: Construction Phase (Phase 1 Complete: 10/2020; Phase 2 Complete: 11/2020; Phase 3 Start: 04/2021)