

Our Future Water Supply

Tualatin Valley Water District (TVWD), the cities of Hillsboro and Beaverton, collectively referred to as the Partners, have identified the Willamette Water Supply System as the best option for future delivery of drinking water to their service areas in Washington County. Development of the Willamette Water Supply System is being led by the Partners. Other water providers in the region are also looking at their options for future participation. The mid-Willamette River at Wilsonville will be the new water supply source for the Willamette Water Supply System. Although current demands are met through other sources, the addition of a new source will provide improved water supply reliability and system resiliency. Developing an additional water supply through a partnership prepares the region's plans for responsible growth within the urban growth boundary.

Willamette Water Supply Monthly Progress Report

Our Reliable Water

Month End **December 2019**

2019 Year in Reflection



Celebrated TVWD and City of Hillsboro WIFIA loan closings with US Senator Merkley

2019 was a year of action and big news. The City of Beaverton joined as one of the Willamette Water Supply Program (WWSP) partners and will receive up to five million gallons of water per day when the system is operational. The Water Infrastructure Finance and Innovation Act (WIFIA) loans closed, which is expected to save ratepayers

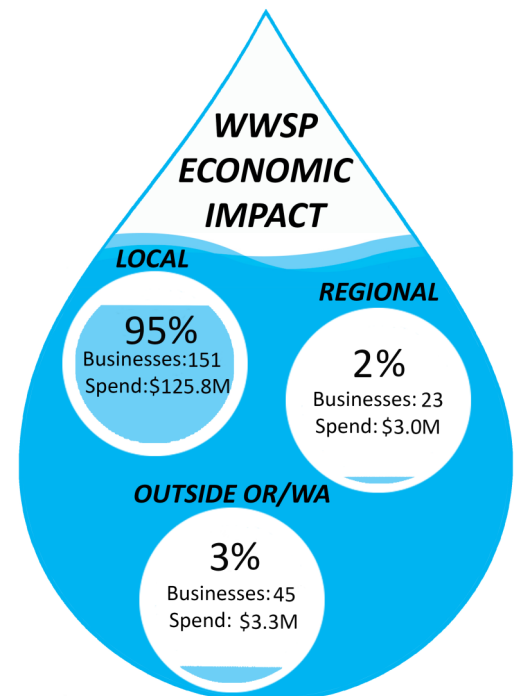
a combined \$263.6 million compared to typical bond financing. The future Water Treatment Plant property located in the City of Sherwood's Tonquin Employment Area was purchased and annexed into Sherwood. Below are additional achievements in 2019:

- Advanced design of the Raw Water Facilities, Water Treatment Plant, and 11 other projects
- Completed two construction projects (PLW_1.1 and PLM_3.0)
- Began and progressed construction of four projects
- Continued real estate acquisitions and obtaining land use permits
- Continued community outreach through open houses, booths at community activities, and business outreach events

WWSP Economic Contribution Summary

The WWSP is positively contributing to the Oregon and Washington regional economy with nearly \$130 million spent through the third quarter of 2019. Approximately 151 local businesses (located in counties within 50 miles of the WWSP project site) and 23 regional businesses (located outside the local area but within Oregon and Washington) have provided goods and services to the program. The 45 other businesses that are located outside Oregon and Washington are also contributing to the local economy, as many of their employees live and work in the local area and generate local benefits through the purchase of goods, services, and other activities. For more information, go to:

www.ourreliablewater.org/business-utilization-info/.



Data through Q3 2019

Procurement & Business Opportunities

The WWSP staff are preparing for several upcoming professional services and construction contractor procurements. Listed below are active procurements and upcoming events and procurements. Procurement opportunities are also published at <http://www.ourreliablewater.org/business-opportunities>.

Active Procurements

- N/A

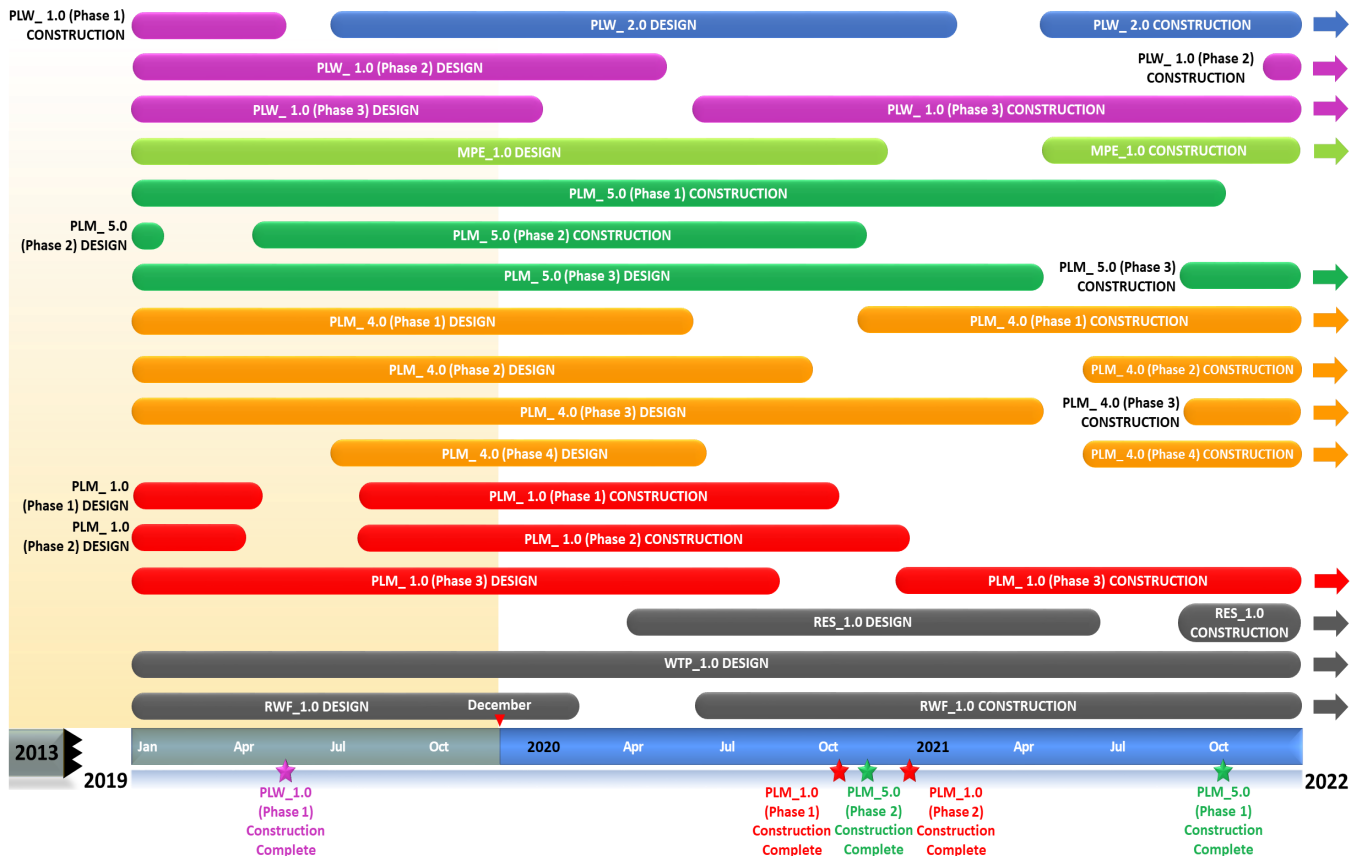
Upcoming Procurements

- Raw Water Facilities (RWF_1.0) Guaranteed Maximum Price (GMP) (Quarter 1, 2020)
- South Hillsboro Area Pipeline (PLW_1.3) Construction Request for Proposal (RFP) (Quarter 1, 2020)*

*Procurement method contingent upon public comment and WWSS Board approval

Schedule Summary

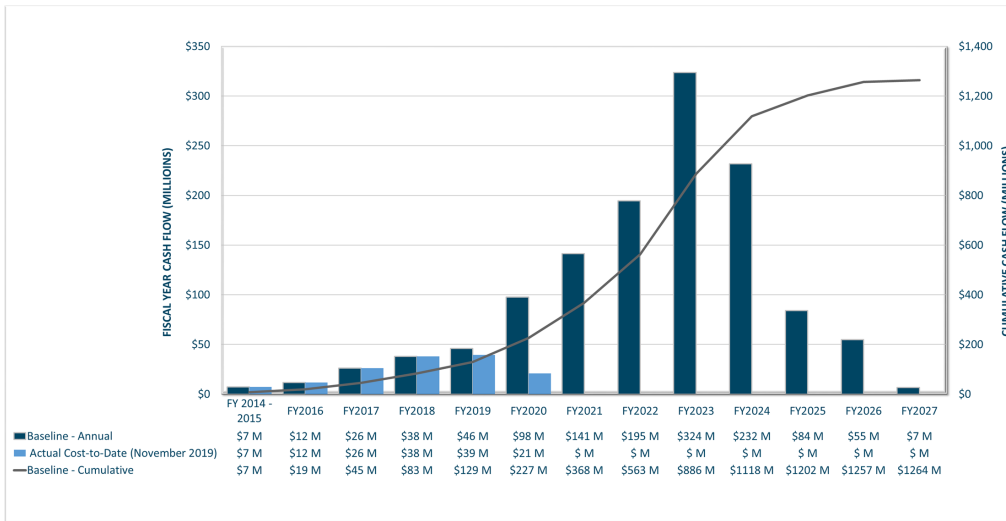
WWSP design and planning began in 2013; the Willamette Water Supply System is expected to be in service by July 2026. Below are the major milestones and activities forecasted from 2019 to 2022*. The WWSP team is committed to on-time delivery. See page 4 for descriptions of the projects referenced below.



*The actual order and duration of projects continues to be refined and is subject to change.

Forecast Cost Summary

The graph below illustrates the projected WWSP cash flow by fiscal year (FY July 1 to June 30)*. The cumulative cash flow establishes the budgeted \$1.3 billion, which accounts for actual and current projected costs, including projected escalation in the cost of labor, materials, and equipment required to build WWSP projects.



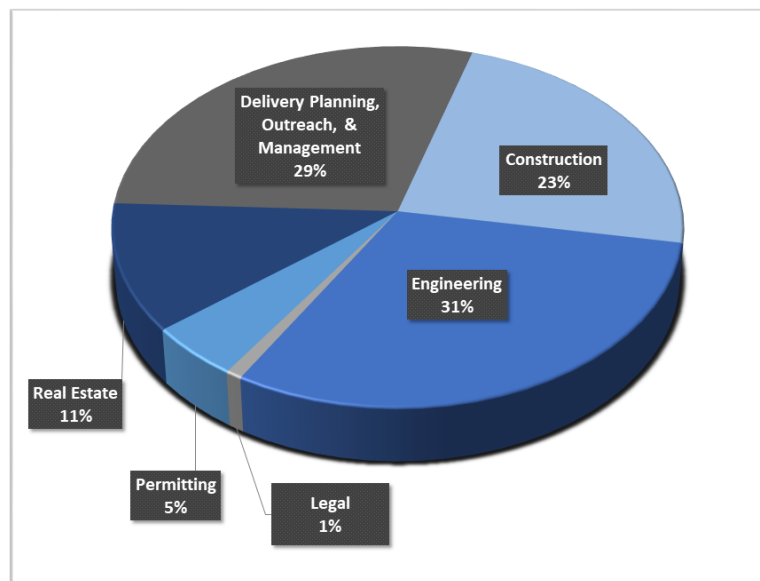
Costs to date for FY 2020 are \$21 million. Cumulative costs are projected to be \$227 million through the end of FY 2020.

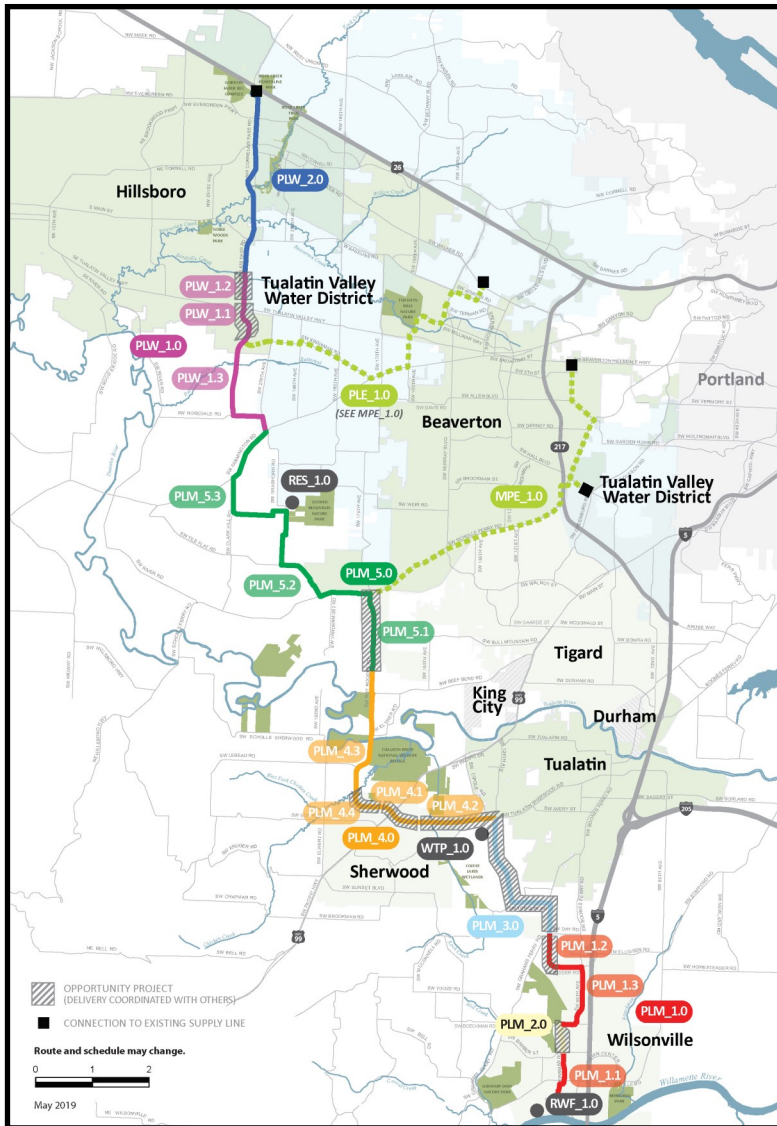
*Data continues to be refined and is subject to change.

Cumulative Cost Summary

WWSP cumulative costs are tracked and updated monthly. The chart below summarizes the distribution of cumulative costs through November 2019.

Cumulative Water Supply Program costs to date are approximately \$143 million, with the majority spent on planning, engineering, construction, and real estate activities.





WTP_1.0 Willamette Water Supply System Water Treatment Plant (Water Treatment Plant (WTP))

Description: 60-million gallon per day water treatment plant (WTP_1.0), including a finished water pump station (FPS_1.0) and a control system (DCS_1.0) located near Sherwood.

Status: Design Phase (WTP/FPS Construction Start: 03/2022)
Design Phase (DCS Construction Start: 03/2022)

RWF_1.0 Raw Water Facilities Expansion (Raw Water Facilities (RWF) Expansion)

Description: Expansion of the existing raw water pump station and intake at the Willamette River WTP (WRWTP) in Wilsonville to 60 million gallons per day of initial capacity for the Willamette Water Supply System.

Status: Design Phase (Construction Start: 06/2020)

For more information about the WWSP, visit www.ourreliablewater.org or call 503.941.4570.

PLW_2.0 Cornelius Pass Pipeline Project (Frances Road to Highway 26)

Description: 3.3-mile water pipeline along Cornelius Pass Rd. from Frances St. to Hwy 26; connects to existing supply lines for City of Hillsboro and TVWD.

Status: Design Phase (Construction Start: 06/2021)

PLW_1.0 South Hillsboro Area Pipeline Project (Farmington Road to Frances Street)

Description: 3.9-mile water pipeline from SW Farmington Rd. at SW 209th Ave. to Cornelius Pass Rd. at Frances St.; also east on Kinnaman Rd. between Cornelius Pass Rd. and SW 209th Ave.

Status: Construction Phase (Phase 1: Complete; Phase 3 Construction Start: 05/2020)

MPE_1.0 Metzger Pipeline East Project (Roy Rogers Road to Beaverton Hillsdale Hwy)

Description: 7.3-mile water pipeline to be built in lieu of PLE_1.0 along SW Scholls Ferry Rd. between SW Roy Rogers Rd. and Allen Blvd.; connects to Metzger service area at SW Oleson Rd. and TVWD's system.

Status: Design Phase (Construction Start: 04/2021)

RES_1.0 South Beaverton Area Water Storage Tanks (Storage Tanks)

Description: Two 15-million gallon storage tanks located on Cooper Mountain.

Status: Planning Phase (Design Start: 02/2020)

PLM_5.0 Scholls Area Pipeline Project (North of Beef Bend Road to Farmington Road)

Description: 7.2-mile water pipeline from SW Roy Rogers Rd. 0.5-mile north of SW Beef Bend Rd. to SW Farmington Rd. at SW 209th Ave.

Status: Construction Phase (Phase 1 Complete: 10/2021; Phase 2 Complete: 11/2020; Phase 3 Start: 09/2021)

PLM_4.0 Tualatin-Sherwood Area Pipeline Project (SW 124th Avenue to north of Beef Bend Road)

Description: 5.3-mile water pipeline from 124th Ave. at SW Tualatin Sherwood Rd. along SW Roy Rogers Rd. to 0.5 miles north of SW Beef Bend Rd.

Status: Design Phase (Phase 1 Construction Start: 11/2020)

PLM_3.0 124th Avenue Partnership Project (SW 124th Avenue Extension)

Description: 2.7-mile water pipeline from Grahams Ferry Rd. at Day Rd. to 124th Ave. at SW Tualatin Sherwood Rd.

Status: Complete

PLM_2.0 Kinsman Road Partnership Project (Kinsman Road Extension)

Description: 0.5-mile water pipeline along Kinsman Rd. between Barber St. and Boeckman Rd.

Status: Complete

PLM_1.0 Wilsonville Area Pipeline Project (WRWTP to Day Road)

Description: 3.3-mile water pipeline from WRWTP to the intersection of SW Garden Acres Rd. at Day Rd.

Status: Construction Phase (Phase 1 Complete: 10/2020; Phase 2 Complete: 12/2020; Phase 3 Start: 12/2020)