

Our Future Water Supply

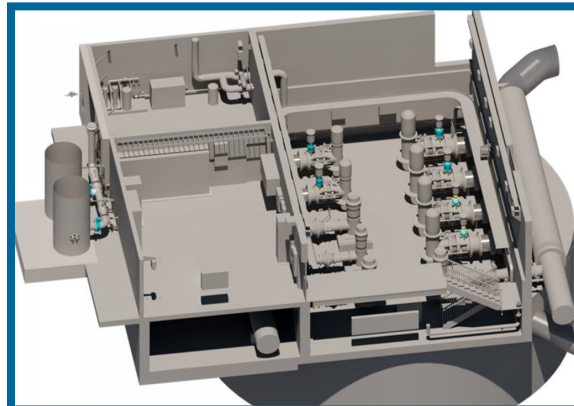
Tualatin Valley Water District (TVWD), the cities of Hillsboro and Beaverton, collectively referred to as the Partners, have identified the Willamette Water Supply System as the best option for future delivery of drinking water to their service areas in Washington County. Development of the Willamette Water Supply System is being led by the Partners. Other water providers in the region are also looking at their options for future participation. The mid-Willamette River at Wilsonville will be the new water supply source for the Willamette Water Supply System. Although current demands are met through other sources, the addition of a new source will provide improved water supply reliability and system resiliency. Developing an additional water supply through a partnership prepares the region's plans for responsible growth within the urban growth boundary.

Willamette Water Supply *Monthly Progress Report*

Our Reliable Water

Month End **October 2019**

Raw Water Facilities Design Reaches 90 Percent Complete



WWSS Raw Water Facilities pump room design

The Willamette Water Supply System (WWSS) Raw Water Facilities (RWF_1.0) project will modify the existing raw water pump station and intake infrastructure at the Willamette River Water Treatment Plant (WRWTP) in Wilsonville. The design consultant, Black & Veatch, recently completed the 90 percent design. The next major design

milestone, 100 percent design, is scheduled for completion in early 2020. In collaboration with the Construction Manager/General Contractor (CM/GC), Kiewit Infrastructure West Co. (Kiewit), the RWF team will continue to progress design while finalizing the project's procurement plan for a guaranteed maximum price (GMP). The GMP will include various work packages that will identify several opportunities for qualified businesses to competitively bid.

Kiewit will advertise the upcoming bidding in early 2020. Kiewit and the RWF_1.0 team are reaching out to interested vendors, subcontractors, and suppliers about initial timing and scope for upcoming construction opportunities. An outreach workshop is scheduled November 19 from 10am to 12pm at TVWD, 1850 SW 170th Ave., Beaverton, OR 97003.

WWSS Partners Celebrate Closing Cost-Saving EPA Loans

In October, WWSS partners celebrated closing on two U.S. Environmental Protection Agency (EPA) Water Infrastructure Finance and Innovation Act (WIFIA) loans—one to TVWD, and the other to the City of Hillsboro—marking the first time WIFIA has granted financing for two individual borrowers partnering on a joint project.

U.S. Senator Jeff Merkley; Chris Hladick, Region 10 EPA Administrator; Bernice Bagnall, TVWD Board President; and Steve Calloway, Mayor of Hillsboro, were featured speakers at the celebration.

The WIFIA loans will provide approximately \$388 million for TVWD and \$251 million for the City of Hillsboro, respectively. The WWSS is Oregon's largest locally funded infra-



WWSS partners celebrate cost saving U.S. EPA WIFIA loan closing ([YouTube video](#))

structure project, with a projected cost of \$1.3 billion. The WIFIA loans will fund almost half the cost and save TVWD ratepayers an estimated \$138.4 million and City of Hillsboro ratepayers an estimated \$125.2 million compared to typical bond financing.

Procurement & Business Opportunities

The Willamette Water Supply Program (WWSP) staff are preparing for several upcoming professional services and construction contractor procurements. Listed below are active procurements and upcoming events and procurements. Procurement opportunities are also published at <http://www.ourreliablewater.org/business-opportunities>.

Active Procurements

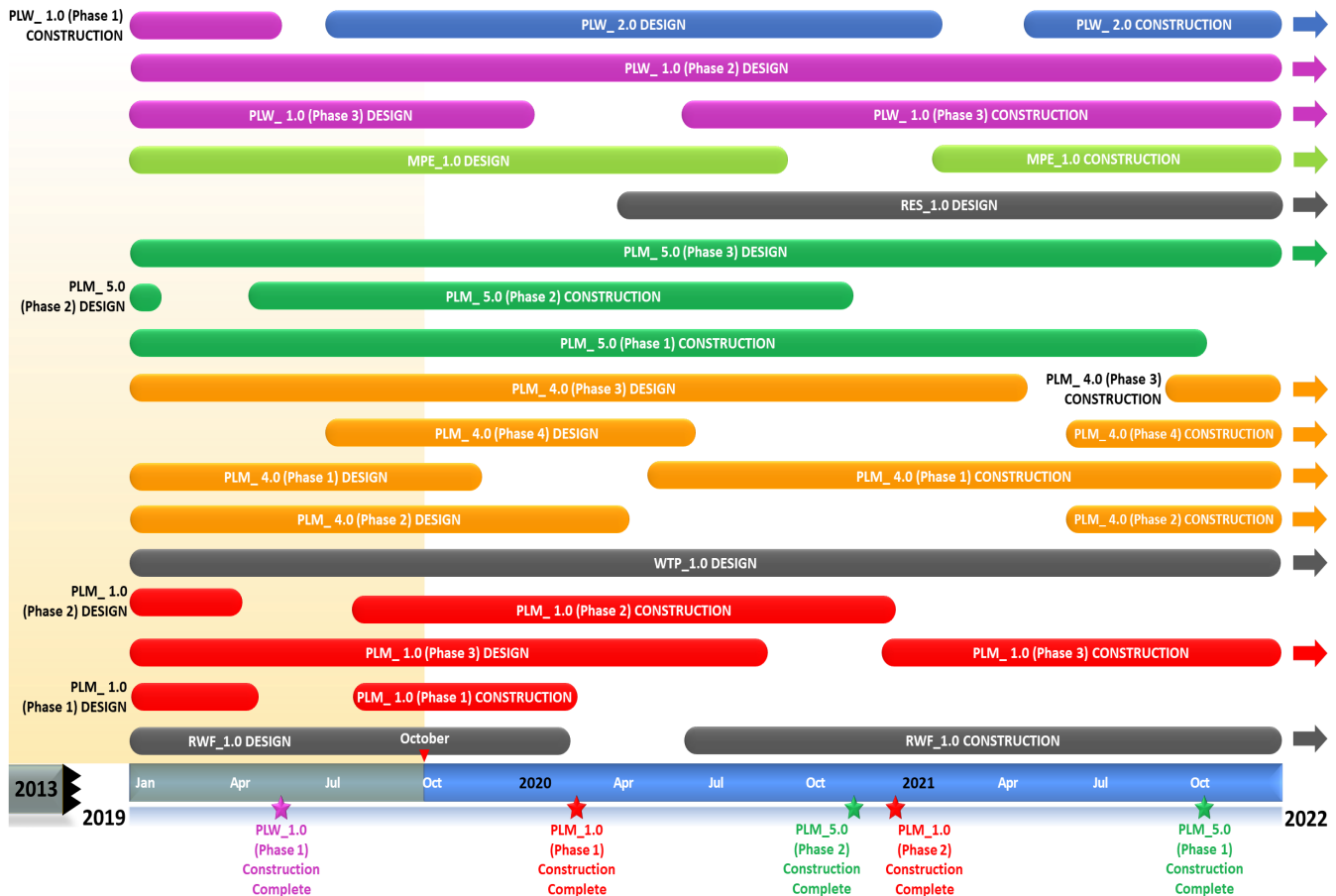
- South Beaverton Area Water Storage Tanks (RES_1.0) Design Request for Proposal (RFP) (in progress)

Upcoming Procurements

- Raw Water Facilities (RWF_1.0) Guaranteed Maximum Price (GMP) (Quarter 1, 2020)

Schedule Summary

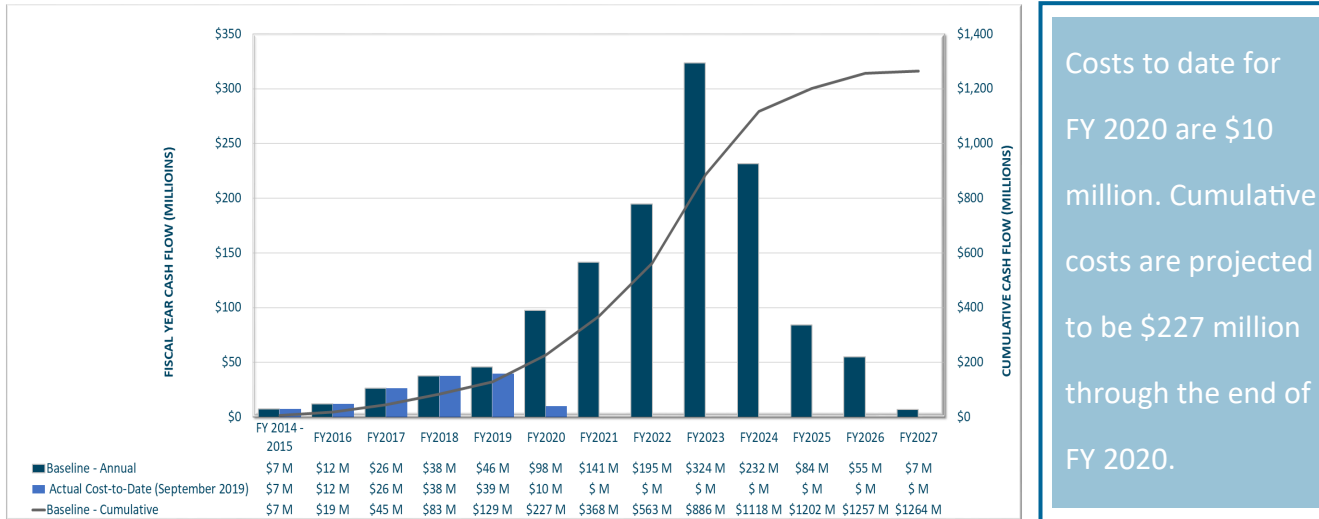
WWSP design and planning began in 2013; the Willamette Water Supply System is expected to be in service by July 2026. Below are the major milestones and activities forecasted from 2019 to 2022*. The WWSP team is committed to on-time delivery. See page 4 for descriptions of the projects referenced below.



*The actual order and duration of projects continues to be refined and is subject to change.

Forecast Cost Summary

The graph below illustrates the projected WWSP cash flow by fiscal year (FY July 1 to June 30)*. The cumulative cash flow establishes the budgeted \$1.3 billion, which accounts for actual and current projected costs, including projected escalation in the cost of labor, materials, and equipment required to build WWSP projects.

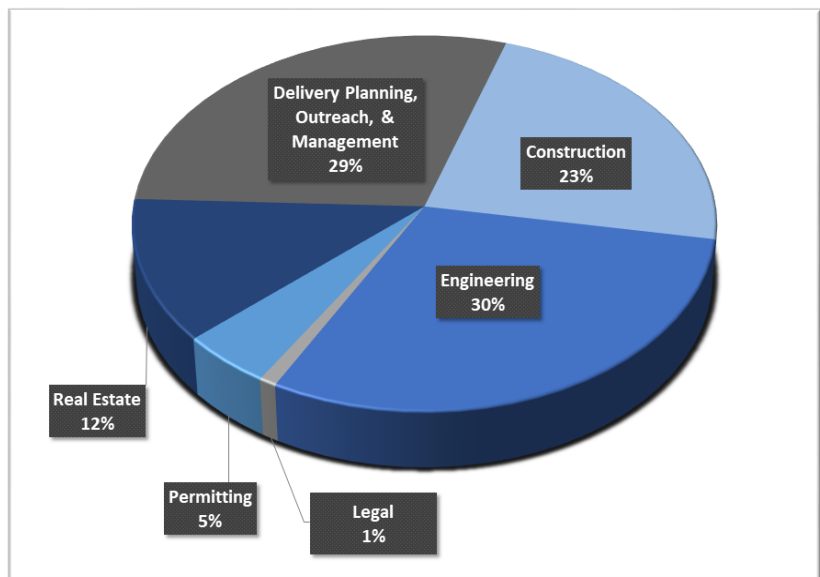


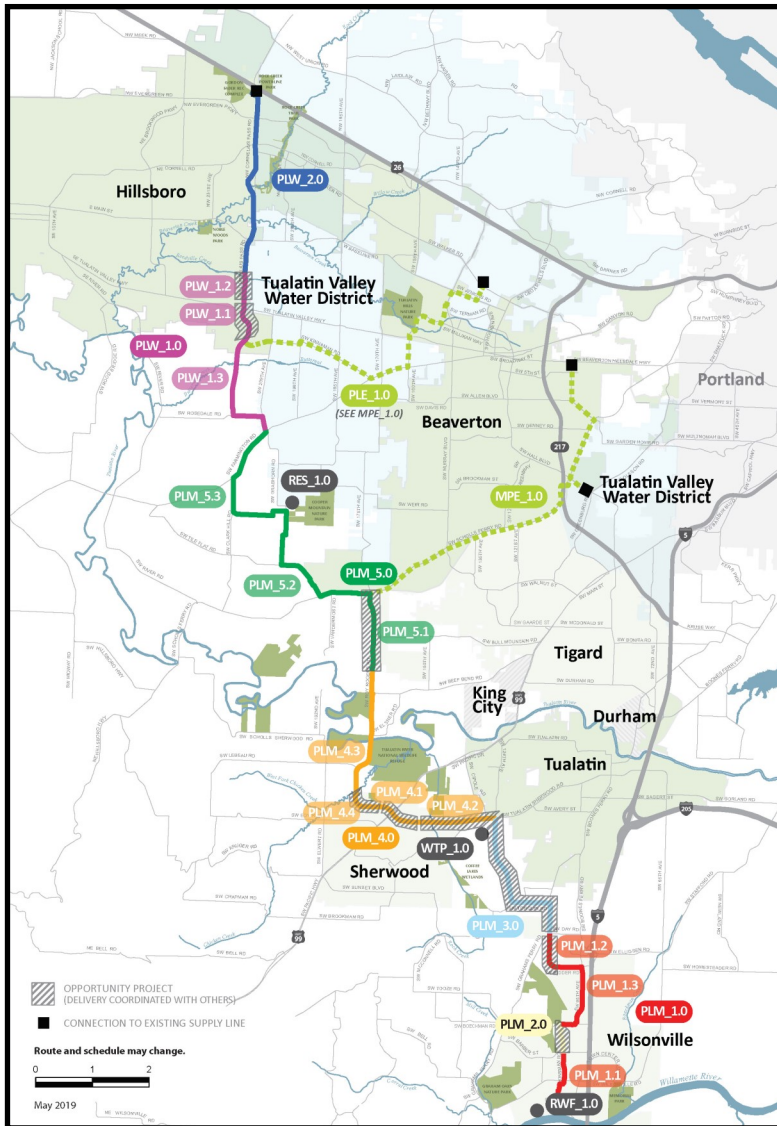
*Data continues to be refined and is subject to change.

Cumulative Cost Summary

WWSP cumulative costs are tracked and updated monthly. The chart below summarizes the distribution of cumulative costs through September 2019.

Cumulative Water Supply Program costs to date are approximately \$132 million, with the majority spent on planning, engineering, construction, and real estate activities.





WTP_1.0 Willamette Water Supply System Water Treatment Plant (Water Treatment Plant (WTP))

Description: 60-million gallon per day water treatment plant (WTP_1.0), including a finished water pump station (FPS_1.0) and a control system (DCS_1.0) located near Sherwood.

Status: Design Phase (WTP/FPS Construction Start: 03/2022)
Design Phase (DCS Construction Start: 03/2022)

RWF_1.0 Raw Water Facilities Expansion (Raw Water Facilities (RWF) Expansion)

Description: Expansion of the existing raw water pump station and intake at the Willamette River WTP (WRWTP) in Wilsonville to 60 million gallons per day of initial capacity for the Willamette Water Supply System.

Status: Design Phase (Construction Start: 06/2020)

For more information about the WWSP, visit www.ourreliablewater.org or call 503.941.4570.

PLW_2.0 Cornelius Pass Pipeline Project (Frances Road to Highway 26)

Description: 3.3-mile water pipeline along Cornelius Pass Rd. from Frances St. to Hwy 26; connects to existing supply lines for City of Hillsboro and TVWD.

Status: Design Phase (Construction Start: 06/2021)

PLW_1.0 South Hillsboro Area Pipeline Project (Farmington Road to Frances Street)

Description: 3.9-mile water pipeline from SW Farmington Rd. at SW 209th Ave. to Cornelius Pass Rd. at Frances St.; also east on Kinnaman Rd. between Cornelius Pass Rd. and SW 209th Ave.

Status: Construction Phase (Phase 1: Complete; Phase 3 Construction Start: 06/2020)

MPE_1.0 Metzger Pipeline East Project (Roy Rogers Road to Beaverton Hillsdale Hwy)

Description: 7.3-mile water pipeline to be built in lieu of PLE_1.0 along SW Scholls Ferry Rd. between SW Roy Rogers Rd. and Allen Blvd.; connects to Metzger service area at SW Oleson Rd. and TVWD's system.

Status: Design Phase (Construction Start: 01/2021)

RES_1.0 South Beaverton Area Water Storage Tanks (Storage Tanks)

Description: Two 15-million gallon storage tanks located on Cooper Mountain.

Status: Planning Phase (Design Start: 02/2020)

PLM_5.0 Scholls Area Pipeline Project (North of Beef Bend Road to Farmington Road)

Description: 7.2-mile water pipeline from SW Roy Rogers Rd. 0.5-mile north of SW Beef Bend Rd. to SW Farmington Rd. at SW 209th Ave.

Status: Construction Phase (Phase 1 Complete: 10/2021; Phase 2 Complete: 11/2020)

PLM_4.0 Tualatin-Sherwood Area Pipeline Project (SW 124th Avenue to north of Beef Bend Road)

Description: 5.3-mile water pipeline from 124th Ave. at SW Tualatin Sherwood Rd. along SW Roy Rogers Rd. to 0.5 miles north of SW Beef Bend Rd.

Status: Design Phase (Phase 1 Construction Start: 04/2020)

PLM_3.0 124th Avenue Partnership Project (SW 124th Avenue Extension)

Description: 2.7-mile water pipeline from Grahams Ferry Rd. at Day Rd. to 124th Ave. at SW Tualatin Sherwood Rd.

Status: Complete

PLM_2.0 Kinsman Road Partnership Project (Kinsman Road Extension)

Description: 0.5-mile water pipeline along Kinsman Rd. between Barber St. and Boeckman Rd.

Status: Complete

PLM_1.0 Wilsonville Area Pipeline Project (WRWTP to Day Road)

Description: 3.3-mile water pipeline from WRWTP to the intersection of SW Garden Acres Rd. at Day Rd.

Status: Construction Phase (Phase 1 Complete: 02/2020; Phase 2 Complete: 12/2020)