

## Our Future Water Supply

Tualatin Valley Water District (TVWD), the cities of Hillsboro and Beaverton, collectively referred to as the Partners, have identified the Willamette Water Supply System as the best option for future delivery of drinking water to their service areas in Washington County. Development of the Willamette Water Supply System is being led by the Partners. Other water providers in the region are also looking at their options for future participation. The mid-Willamette River at Wilsonville will be the new water supply source for the Willamette Water Supply System. Although current demands are met through other sources, the addition of a new source will provide improved water supply reliability and system resiliency. Developing an additional water supply through a partnership prepares the region's plans for responsible growth within the urban growth boundary.

# Willamette Water Supply *Monthly Progress Report*

## Our Reliable Water

Month End **September 2019**

### South Beaverton Area Water Storage Tanks

The Willamette Water Supply Program's (WWSP) top priority is providing safe, reliable drinking water. Water storage is a critical part of the water distribution system. Two large water tanks will be constructed that will store treated water from the new Willamette Water Supply System (WWSS) Water Treatment Plant (WTP\_1.0). From the tanks, water will be delivered to homes and businesses within the Tualatin Valley Water District (TVWD) and the cities of Hillsboro and Beaverton service areas. Each tank will store up to 15 million gallons of water for emergencies and day-to-day operations. Because the water tanks are so vital to the overall system, they will be designed to stringent seismic standards with extra safety features. Some of these features include:

- Seismic cables to connect tank walls and foundations.
- Pre-stressed concrete to make sure tank walls do not crack during an earthquake.
- Sensor valves on inlet and outlet pipes that can be closed to prevent water loss through broken pipes/leaks in the system that could drain the tank.
- Pipe connections that are flexible, making them less likely to break.

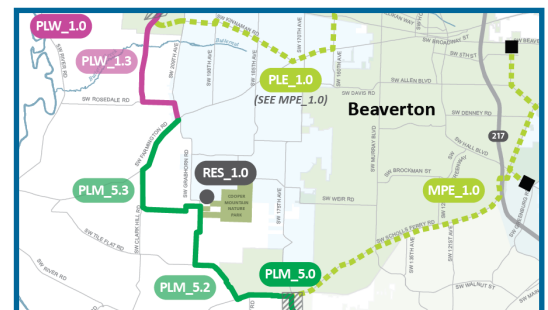
The South Beaverton Area Water Storage Tanks (RES\_1.0) Design Request for Proposal (RFP) will be released later this year. Construction is anticipated to start mid-2022.

**SOUTH BEAVERTON AREA WATER STORAGE TANKS** RES\_1.0

STORAGE TANKS

---

CONSTRUCTION: 2022 - 2024



### WWSS Contractor Prequalification Process

The WWSP is currently prequalifying prime contractors to bid on upcoming water transmission pipeline construction. WWSS construction involves large-diameter, mortar-lined, welded steel pipe that requires special expertise for installation. The contractors will be selected based on factors that include experience with similar pipeline construction, safety records, and ability to perform the work. For more information, visit

<http://www.ourreliablewater.org/contracting-opportunities/>

#### Upcoming Pipeline Opportunities in 2020

<b>PLW_1.3</b>	<b>South Hillsboro Area Pipeline Project (Phase 3)</b>	<b>Quarter 1</b>
<b>PLM_4.1</b>	<b>Tualatin-Sherwood Area Pipeline Project (Phase 1)</b>	<b>Quarter 2</b>
<b>PLM_1.3</b>	<b>Wilsonville Area Pipeline Project (Phase 3)</b>	<b>Quarter 2</b>
<b>MPE_1.0</b>	<b>Metzger Pipeline East Project</b>	<b>Quarter 4</b>

## Procurement & Business Opportunities

The Willamette Water Supply Program (WWSP) staff are preparing for several upcoming professional services and construction contractor procurements. Listed below are active procurements and upcoming events and procurements. Procurement opportunities are also published at <http://www.ourreliablewater.org/business-opportunities>.

### Active Procurements

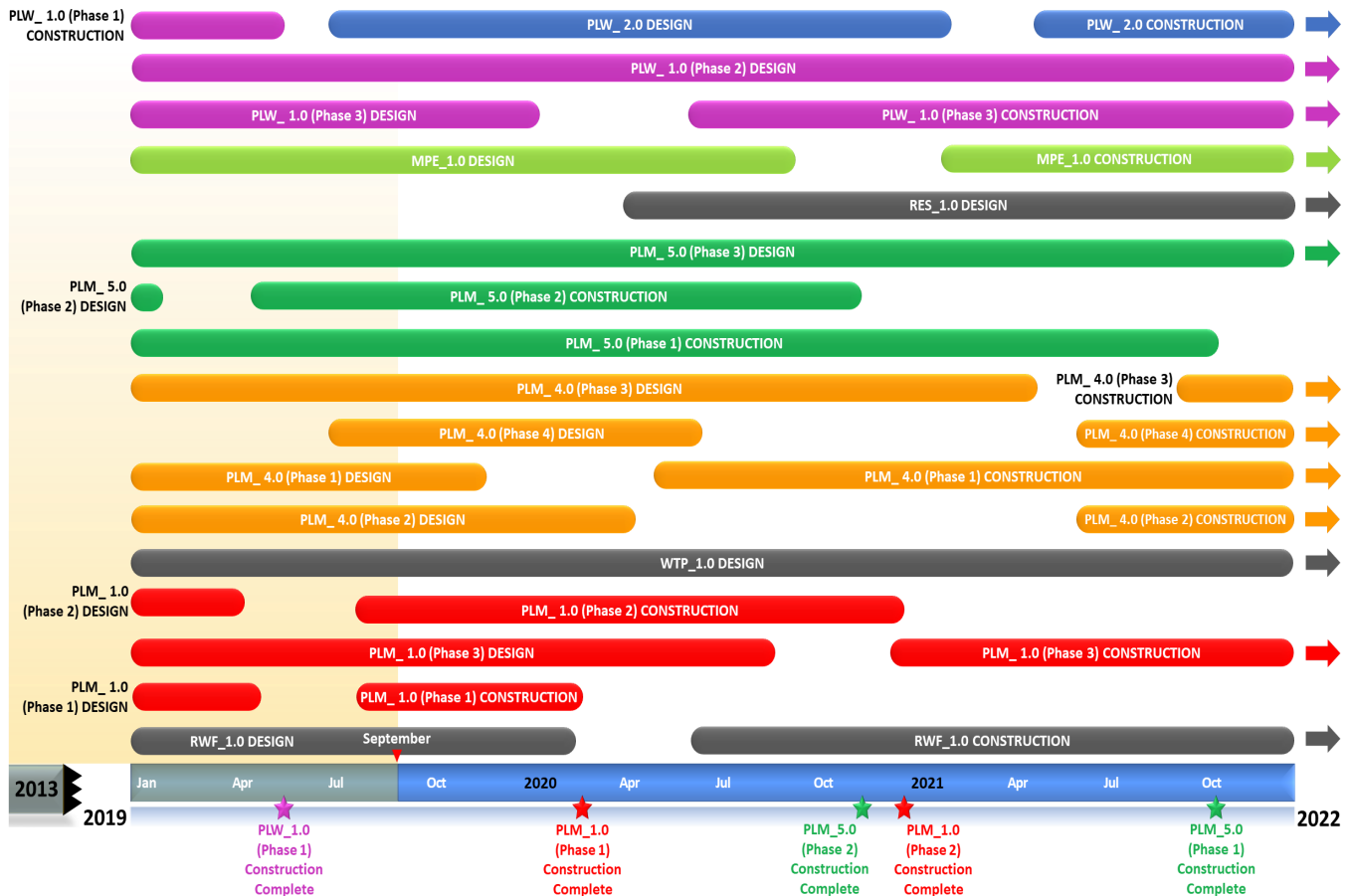
- Water Transmission Pipeline Construction Services, Pipeline Construction Contractor Prequalification, Request for Qualifications (RFQ) (Quarter 4, 2019)

### Upcoming Procurements

- South Beaverton Area Water Storage Tanks (RES\_1.0) Design Request for Proposal (RFP) (Quarter 4, 2019)
- Raw Water Facilities (RWF\_1.0) Guaranteed Maximum Price (GMP) (Quarter 4, 2019)

## Schedule Summary

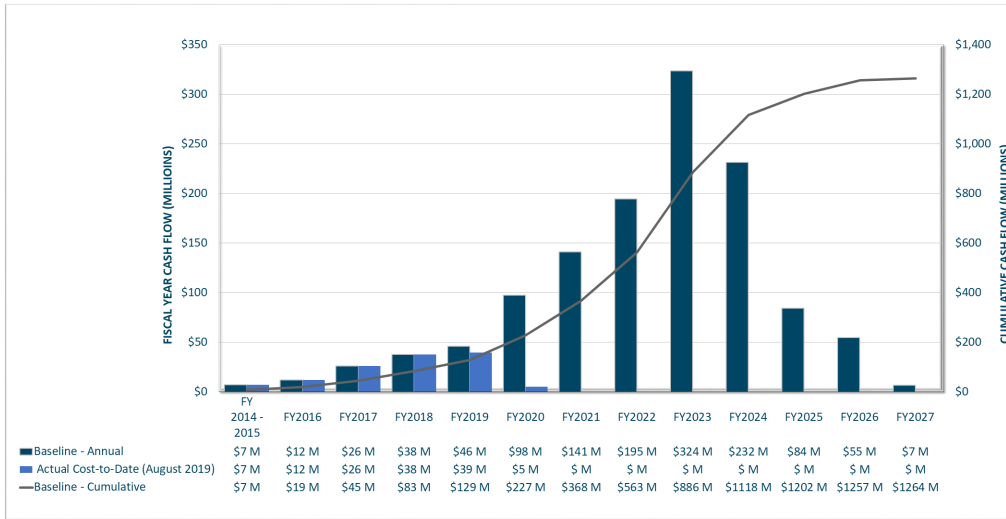
WWSP design and planning began in 2013; the Willamette Water Supply System is expected to be in service by July 2026. Below are the major milestones and activities forecasted from 2019 to 2022\*. The WWSP team is committed to on-time delivery. See page 4 for descriptions of the projects referenced below.



\*The actual order and duration of projects continues to be refined and is subject to change.

## Forecast Cost Summary

The graph below illustrates the projected WWSP cash flow by fiscal year (FY July 1 to June 30)\*. The cumulative cash flow establishes the budgeted \$1.3 billion, which accounts for actual and current projected costs, including projected escalation in the cost of labor, materials, and equipment required to build WWSP projects.



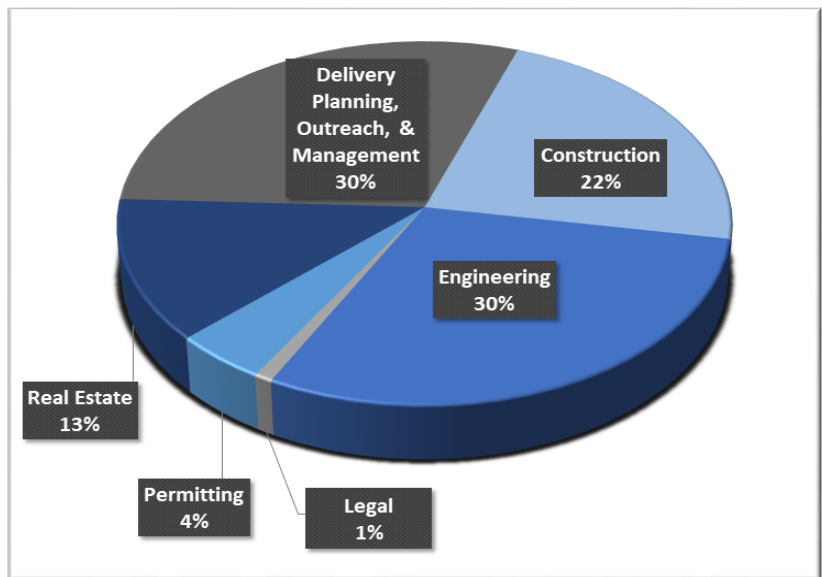
Costs to date for FY 2020 are \$5 million. Cumulative costs are projected to be \$227 million through the end of FY 2020.

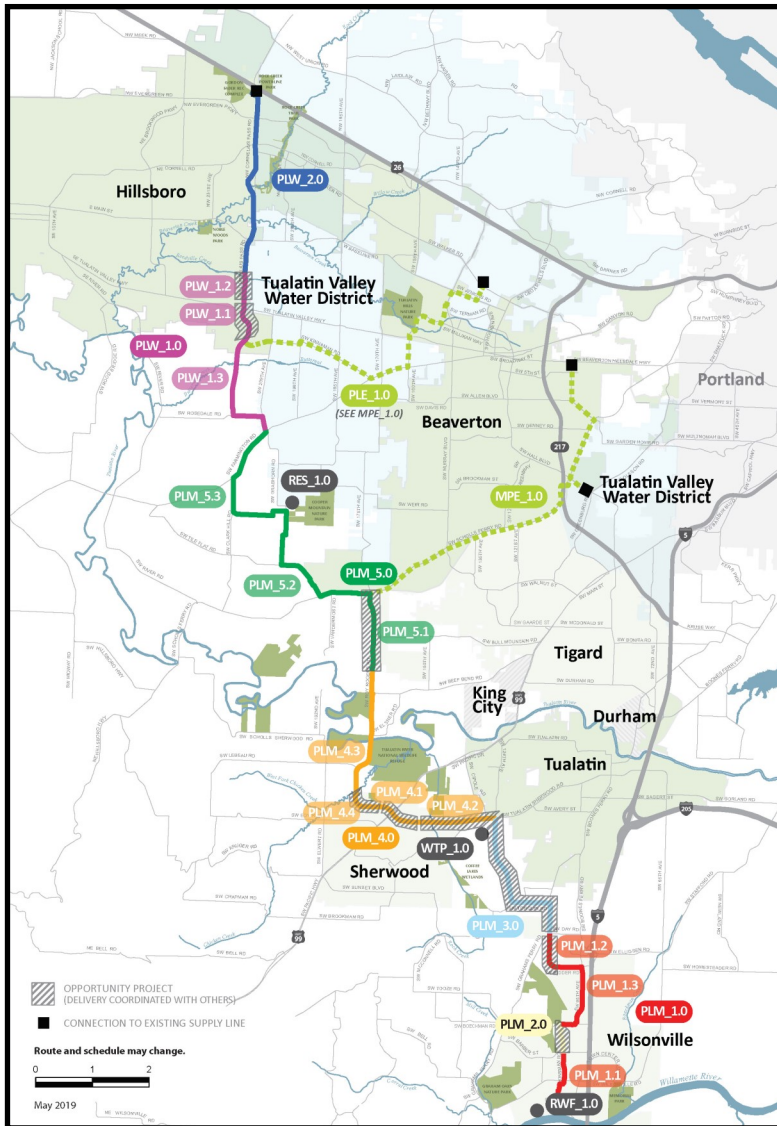
\*Data continues to be refined and is subject to change.

## Cumulative Cost Summary

WWSP cumulative costs are tracked and updated monthly. The chart below summarizes the distribution of cumulative costs through August 2019.

**Cumulative Water Supply Program costs to date are approximately \$127 million, with the majority spent on planning, engineering, construction, and real estate activities.**





**WTP\_1.0 Willamette Water Supply System Water Treatment Plant (Water Treatment Plant (WTP))**

*Description:* 60-million gallon per day water treatment plant (WTP\_1.0), including a finished water pump station (FPS\_1.0) and a control system (DCS\_1.0) located near Sherwood.

*Status:* Design Phase (WTP/FPS Construction Start: 03/2022)  
Design Phase (DCS Construction Start: 03/2022)

**RWF\_1.0 Raw Water Facilities Expansion (Raw Water Facilities (RWF) Expansion)**

*Description:* Expansion of the existing raw water pump station and intake at the Willamette River WTP (WRWTP) in Wilsonville to 60 million gallons per day of initial capacity for the Willamette Water Supply System.

*Status:* Design Phase (Construction Start: 06/2020)

*For more information about the WWSP, visit [www.ourreliablewater.org](http://www.ourreliablewater.org) or call 503.941.4570.*

**PLW\_2.0 Cornelius Pass Pipeline Project (Frances Road to Highway 26)**

*Description:* 3.3-mile water pipeline along Cornelius Pass Rd. from Frances St. to Hwy 26; connects to existing supply lines for City of Hillsboro and TVWD.

*Status:* Design Phase (Construction Start: 06/2021)

**PLW\_1.0 South Hillsboro Area Pipeline Project (Farmington Road to Frances Street)**

*Description:* 3.9-mile water pipeline from SW Farmington Rd. at SW 209th Ave. to Cornelius Pass Rd. at Frances St.; also east on Kinnaman Rd. between Cornelius Pass Rd. and SW 209th Ave.

*Status:* Construction Phase (Phase 1: Complete; Phase 3 Construction Start: 06/2020)

**MPE\_1.0 Metzger Pipeline East Project (Roy Rogers Road to Beaverton Hillsdale Hwy)**

*Description:* 7.3-mile water pipeline to be built in lieu of PLE\_1.0 along SW Scholls Ferry Rd. between SW Roy Rogers Rd. and Allen Blvd.; connects to Metzger service area at SW Oleson Rd. and TVWD's system.

*Status:* Design Phase (Construction Start: 01/2021)

**RES\_1.0 South Beaverton Area Water Storage Tanks (Storage Tanks)**

*Description:* Two 15-million gallon storage tanks located on Cooper Mountain.

*Status:* Planning Phase (Design Start: 04/2020)

**PLM\_5.0 Scholls Area Pipeline Project (North of Beef Bend Road to Farmington Road)**

*Description:* 7.2-mile water pipeline from SW Roy Rogers Rd. 0.5-mile north of SW Beef Bend Rd. to SW Farmington Rd. at SW 209th Ave.

*Status:* Construction Phase (Phase 1 Complete: 10/2021; Phase 2 Complete: 11/2020)

**PLM\_4.0 Tualatin-Sherwood Area Pipeline Project (SW 124th Avenue to north of Beef Bend Road)**

*Description:* 5.3-mile water pipeline from 124th Ave. at SW Tualatin Sherwood Rd. along SW Roy Rogers Rd. to 0.5 miles north of SW Beef Bend Rd.

*Status:* Design Phase (Phase 1 Construction Start: 04/2020)

**PLM\_3.0 124th Avenue Partnership Project (SW 124th Avenue Extension)**

*Description:* 2.7-mile water pipeline from Grahams Ferry Rd. at Day Rd. to 124th Ave. at SW Tualatin Sherwood Rd.

*Status:* Complete

**PLM\_2.0 Kinsman Road Partnership Project (Kinsman Road Extension)**

*Description:* 0.5-mile water pipeline along Kinsman Rd. between Barber St. and Boeckman Rd.

*Status:* Complete

**PLM\_1.0 Wilsonville Area Pipeline Project (WRWTP to Day Road)**

*Description:* 3.3-mile water pipeline from WRWTP to the intersection of SW Garden Acres Rd. at Day Rd.

*Status:* Construction Phase (Phase 1 Complete: 02/2020; Phase 2 Complete: 12/2020)