

## Our Future Water Supply

Tualatin Valley Water District (TVWD), the cities of Hillsboro and Beaverton, collectively referred to as the Partners, have identified the Willamette Water Supply System as the best option for future delivery of drinking water to their service areas in Washington County. Development of the Willamette Water Supply System is being led by the Partners. Other water providers in the region are also looking at their options for future participation. The mid-Willamette River at Wilsonville will be the new water supply source for the Willamette Water Supply System. Although current demands are met through other sources, the addition of a new source will provide improved water supply reliability and system resiliency. Developing an additional water supply through a partnership prepares the region's plans for responsible growth within the urban growth boundary.

# Willamette Water Supply

Monthly Progress Report

## Our Reliable Water

Month End August 2019

### Scholls Area Pipeline Project Construction Progress

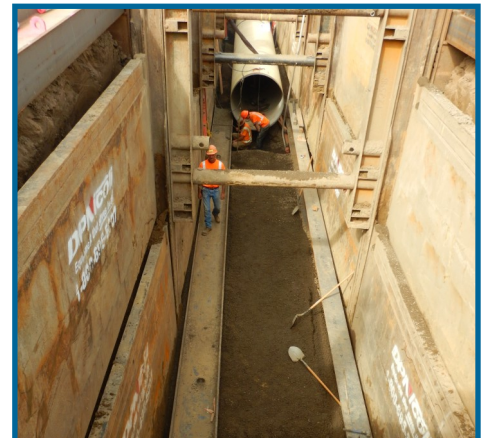
The Scholls Area Pipeline Project includes installation of 7.2 miles of 66-inch diameter pipeline that extends from SW Roy Rogers Road to SW Rosedale Road. Phase 1 (PLM\_5.1) consists of approximately 1.4 miles of pipeline that will be installed in coordination with Washington County's Roy Rogers Road widening project and Clean Water Service's sewer force main project. Tapani, Inc. began bridge and road widening activities earlier this year and has continued roadway work through July. Moore Excavation, Inc., a subcontractor to Tapani, plans to begin installing the Willamette Water Supply System (WWSS) waterline in the next month. Construction for Phase 1 is anticipated to be complete by fall 2021.

Phase 2 (PLM\_5.2) consists of approximately 1.9 miles of pipeline that will be installed from SW Scholls Ferry Road to SW Grabhorn Road. The construction contractor, Emery & Sons, is installing pipe in coordination with Polygon Northwest and the City of Beaverton during construction of the new home developments and associated roadway expansion. Phase 2 construction is anticipated to be complete by late 2020.

### TVWD and Hillsboro Close on WIFIA Loans

TVWD and the City of Hillsboro are financing a portion of the WWSS through the US Environmental Protection Agency (EPA) under the Water Infrastructure Finance and Innovation Act (WIFIA). These flexible loans provide lower interest rates and fees, a 35-year payback period, and a longer interest-only period than traditional borrowing methods (e.g., municipal bonds).

TVWD and the City of Hillsboro submitted separate loan applications totaling \$638.3 million. TVWD closed its WIFIA loan for \$387.8 million on August 2, 2019 at 2.39 percent. The City of Hillsboro closed its WIFIA loan for \$250.6 million on August 16, 2019 at 1.98 percent. The loans will save TVWD an estimated \$138.4 million and Hillsboro an estimated \$125.2 million compared to typical bond financing.



Installation of pipe for Scholls Area Pipeline Project Phase 2 (top & bottom photos)



For more information about WWSS's loan and the WIFIA program, go to:

[WWSP October 2018 Monthly Report](#)

[Water Infrastructure Finance and Innovation Act \(WIFIA\)](#)

## Procurement & Business Opportunities

The Willamette Water Supply Program (WWSP) staff are preparing for several upcoming professional services and construction contractor procurements. Listed below are active procurements and upcoming events and procurements. Procurement opportunities are also published at <http://www.ourreliablewater.org/business-opportunities>.

### Active Procurements

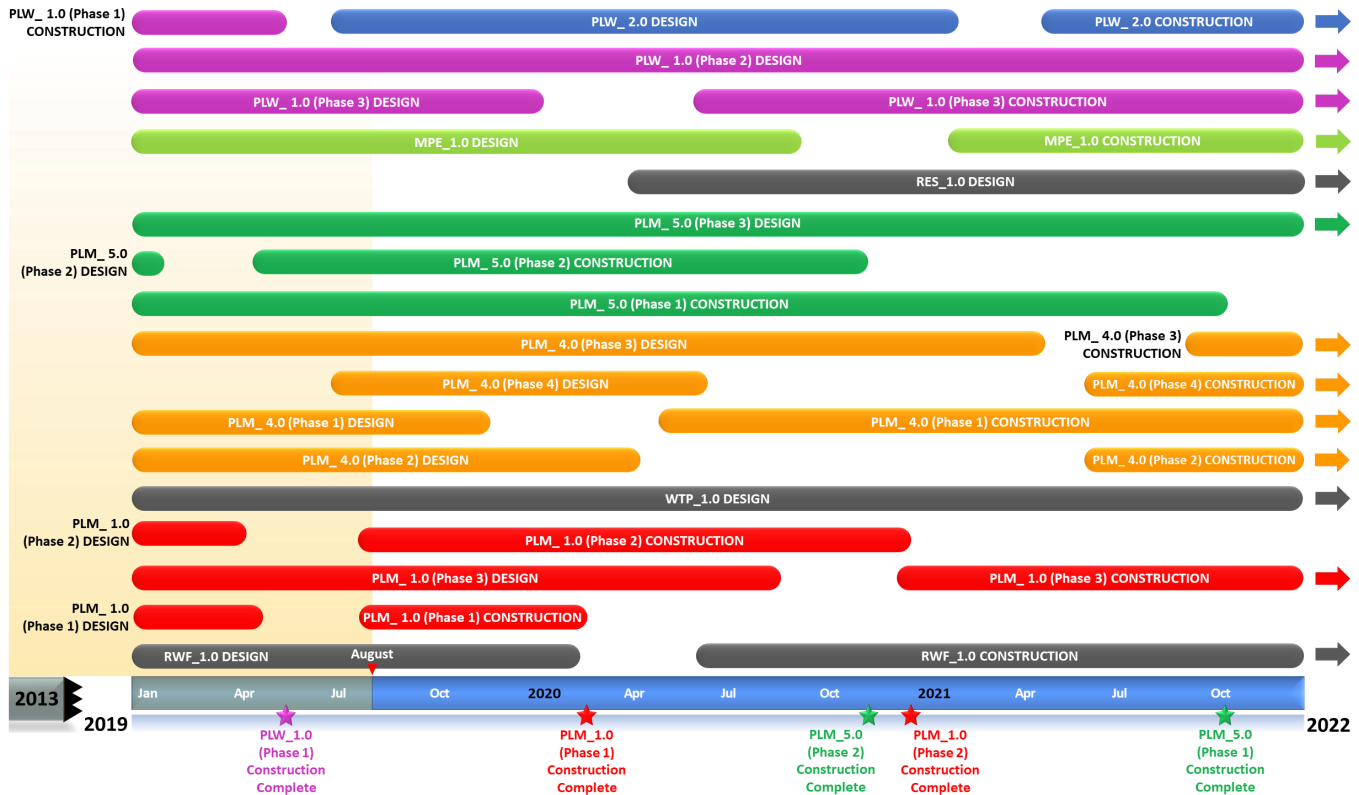
- None at this time

### Upcoming Procurements

- Water Transmission Pipeline Construction Services, Pipeline Construction Contractor Prequalification, Request for Qualifications (RFQ) (Quarter 4, 2019)
- South Beaverton Area Water Storage Tanks (RES\_1.0) Design Request for Proposal (RFP) (Quarter 4, 2019)
- Raw Water Facilities (RWF\_1.0) Guaranteed Maximum Price (GMP) (Quarter 4, 2019)

## Schedule Summary

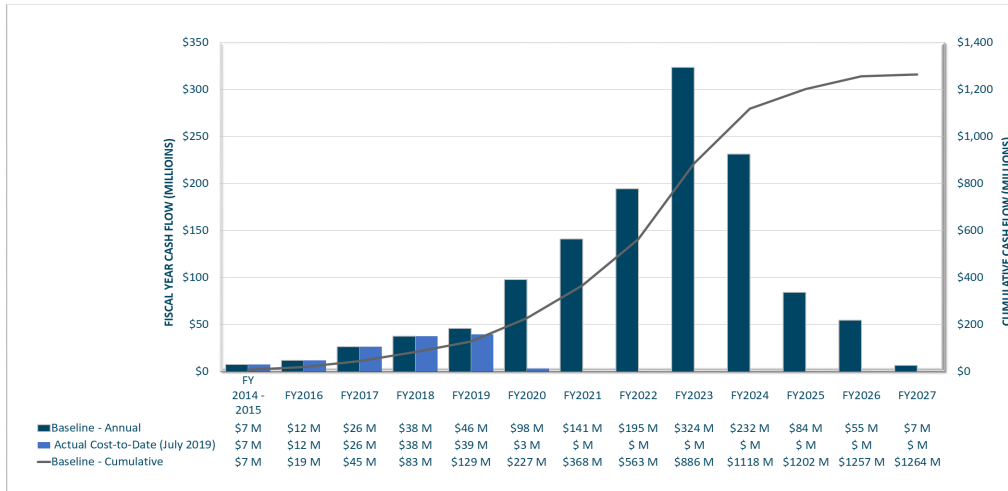
WWSP design and planning began in 2013; the Willamette Water Supply System is expected to be in service by July 2026. Below are the major milestones and activities forecasted from 2019 to 2022\*. The WWSP team is committed to on-time delivery. See page 4 for descriptions of the projects referenced below.



\*The actual order and duration of projects continues to be refined and is subject to change.

## Forecast Cost Summary

The graph below illustrates the projected WWSP cash flow by fiscal year (FY July 1 to June 30)\*. The cumulative cash flow establishes the budgeted \$1.3 billion, which accounts for actual and current projected costs, including projected escalation in the cost of labor, materials, and equipment required to build WWSP projects.



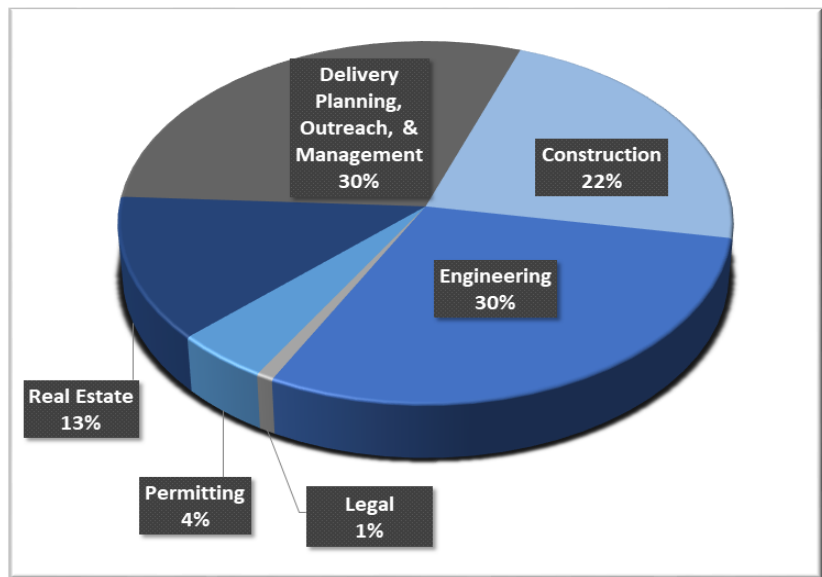
Costs to date for FY 2020 are \$3 million. Cumulative costs are projected to be \$220 million through the end of FY 2020.

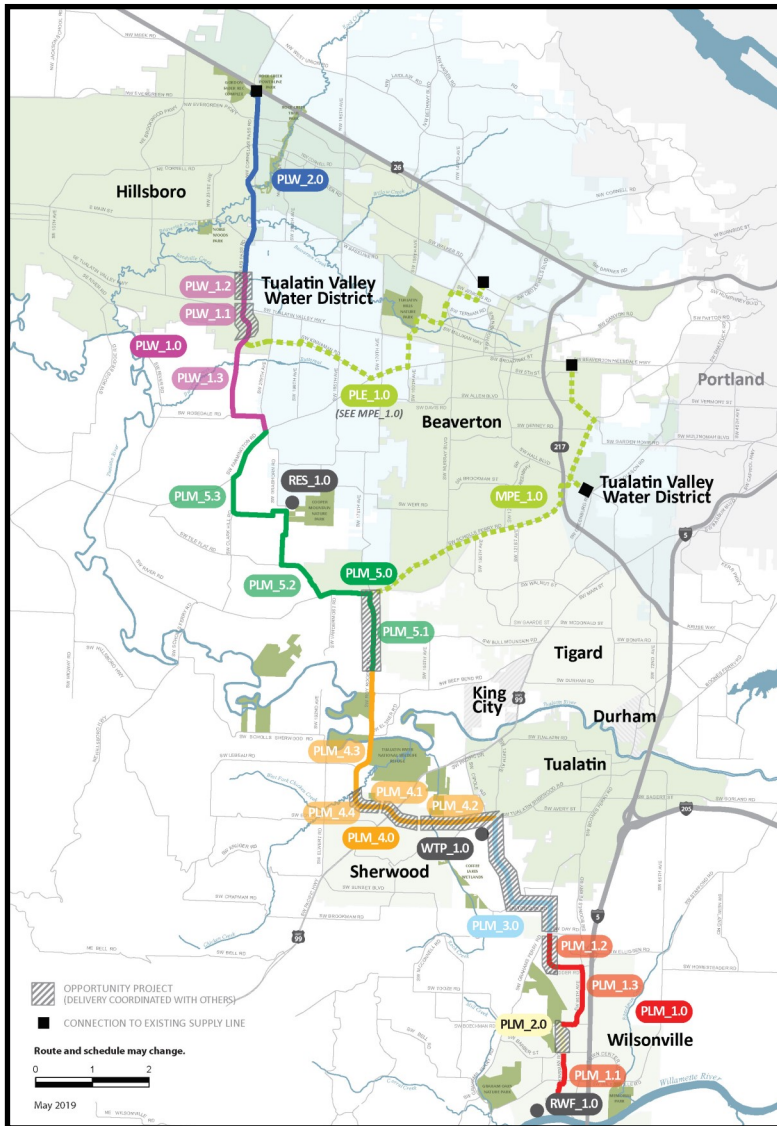
\*Data continues to be refined and is subject to change.

## Cumulative Cost Summary

WWSP cumulative costs are tracked and updated monthly. The chart below summarizes the distribution of cumulative costs through July 2019.

**Cumulative Water Supply Program costs to date are approximately \$125 million, with the majority spent on planning, engineering, construction, and real estate activities.**





**WTP\_1.0 Willamette Water Supply System Water Treatment Plant (Water Treatment Plant (WTP))**

*Description:* 60-million gallon per day water treatment plant (WTP\_1.0), including a finished water pump station (FPS\_1.0) and a control system (DCS\_1.0) located near Sherwood.

*Status:* Design Phase (WTP/FPS Construction Start: 03/2022)  
Design Phase (DCS Construction Start: 03/2022)

**RWF\_1.0 Raw Water Facilities Expansion (Raw Water Facilities (RWF) Expansion)**

*Description:* Expansion of the existing raw water pump station and intake at the Willamette River WTP (WRWTP) in Wilsonville to 60 million gallons per day of initial capacity for the Willamette Water Supply System.

*Status:* Design Phase (Construction Start: 06/2020)

*For more information about the WWSP, visit [www.ourreliablewater.org](http://www.ourreliablewater.org) or call 503.941.4570.*

**PLW\_2.0 Cornelius Pass Pipeline Project (Frances Road to Highway 26)**

*Description:* 3.3-mile water pipeline along Cornelius Pass Rd. from Frances St. to Hwy 26; connects to existing supply lines for City of Hillsboro and TVWD.

*Status:* Design Phase (Construction Start: 06/2021)

**PLW\_1.0 South Hillsboro Area Pipeline Project (Farmington Road to Frances Street)**

*Description:* 3.9-mile water pipeline from SW Farmington Rd. at SW 209th Ave. to Cornelius Pass Rd. at Frances St.; also east on Kinnaman Rd. between Cornelius Pass Rd. and SW 209th Ave.

*Status:* Construction Phase (Phase 1: Complete; Phase 3 Construction Start: 06/2020)

**MPE\_1.0 Metzger Pipeline East Project (Roy Rogers Road to Beaverton Hillsdale Hwy)**

*Description:* 7.3-mile water pipeline to be built in lieu of PLE\_1.0 along SW Scholls Ferry Rd. between SW Roy Rogers Rd. and Allen Blvd.; connects to Metzger service area at SW Oleson Rd. and TVWD's system.

*Status:* Design Phase (Construction Start: 01/2021)

**RES\_1.0 South Beaverton Area Water Storage Tanks (Storage Tanks)**

*Description:* Two 15-million gallon storage tanks located on Cooper Mountain.

*Status:* Planning Phase (Design Start: 04/2020)

**PLM\_5.0 Scholls Area Pipeline Project (North of Beef Bend Road to Farmington Road)**

*Description:* 7.2-mile water pipeline from SW Roy Rogers Rd. 0.5-mile north of SW Beef Bend Rd. to SW Farmington Rd. at SW 209th Ave.

*Status:* Construction Phase (Phase 1 Complete: 10/2021; Phase 2 Complete: 11/2020)

**PLM\_4.0 Tualatin-Sherwood Area Pipeline Project (SW 124th Avenue to north of Beef Bend Road)**

*Description:* 5.3-mile water pipeline from 124th Ave. at SW Tualatin Sherwood Rd. along SW Roy Rogers Rd. to 0.5 miles north of SW Beef Bend Rd.

*Status:* Design Phase (Phase 1 Construction Start: 04/2020)

**PLM\_3.0 124th Avenue Partnership Project (SW 124th Avenue Extension)**

*Description:* 2.7-mile water pipeline from Grahams Ferry Rd. at Day Rd. to 124th Ave. at SW Tualatin Sherwood Rd.

*Status:* Complete

**PLM\_2.0 Kinsman Road Partnership Project (Kinsman Road Extension)**

*Description:* 0.5-mile water pipeline along Kinsman Rd. between Barber St. and Boeckman Rd.

*Status:* Complete

**PLM\_1.0 Wilsonville Area Pipeline Project (WRWTP to Day Road)**

*Description:* 3.3-mile water pipeline from WRWTP to the intersection of SW Garden Acres Rd. at Day Rd.

*Status:* Construction Phase (Phase 1 Complete: 02/2020; Phase 2 Complete: 12/2020)