

Our Future Water Supply

Tualatin Valley Water District (TVWD) and the City of Hillsboro, collectively referred to as the Partners, have identified the Willamette Water Supply System as the best option for future delivery of drinking water to their service areas in Washington County. Development of the Willamette Water Supply System is being led by the Partners. Other water providers in the region are also looking at their options for future participation. The mid-Willamette River at Wilsonville will be the new water supply source for the Willamette Water Supply System. Although current demands are met through other sources, the addition of a new source will provide improved water supply reliability and system resiliency. Developing an additional water supply through a partnership supports the region's plans for responsible growth within the urban growth boundary.

Willamette Water Supply

Our Reliable Water

Monthly Progress Report

Month End June 2019

Chicken Creek Restoration Project

The Scholls Area Pipeline Project team will likely begin construction on the 7.2-mile pipeline that extends from Roy Rogers Road to Farmington Road in June. The space needed for pipeline construction and road improvements requires removal of more than 200 trees. To repurpose this natural resource locally, the Willamette Water Supply Program (WWSP) is donating dozens of cut trees to Clean Water Services, Chicken Creek Restoration Project. The trees, which were selected for this project, will be placed in the restored creek bed to create habitat for fish. In addition to donating the trees, WWSP is also contributing funding to support the restoration to

demonstrate its commitment to environmental stewardship within the watersheds and communities in which it operates.

The Chicken Creek Restoration Project is located within the Tualatin River National Wildlife Refuge near Sherwood, along a tributary to the Tualatin River. This project will return approximately 1.5-miles of Chicken Creek to its historic channel and floodplain. It will benefit steelhead, trout, lamprey, and cutthroat trout, as well as migratory and native birds. Beaver habitat will also be established as part of this long-term restoration effort. To learn more about this project, visit the project website [here](#).



WWSP Leadership Changes

After many successful years in the water industry, Tualatin Valley Water District (TVWD) Chief Executive Officer (CEO) Mark Knudson and Hillsboro Water Director Kevin Hanway are retiring in 2019. Since the beginning, Mark and Kevin provided the vision to establish WWSP and offered strong support for the team's progress. Their leadership and vision have created strong organizations and a highly successful program. Tom Hickmann will take the role of TVWD CEO starting August 1, and Niki Iverson will serve as the new Hillsboro Water Director.

The WWSP's decision-making structure will also evolve this year to a long-term, board-governed commission instead of the current dual-agency approval process. By fall, the new Willamette Water Supply System (WWSS) board will be meeting regularly, working with TVWD leadership to oversee the WWSP and eventually the new transmission, storage, pumping, and treatment system. The day-to-day operations of communications, planning, design, and construction management at the WWSP office will remain unchanged.

Procurement & Business Opportunities

WWSP staff are preparing for several upcoming professional services and construction contractor procurements. Listed below are active procurements and upcoming events and procurements. Procurement opportunities are also published at <http://www.ourreliablewater.org/business-opportunities>.

Active Procurements

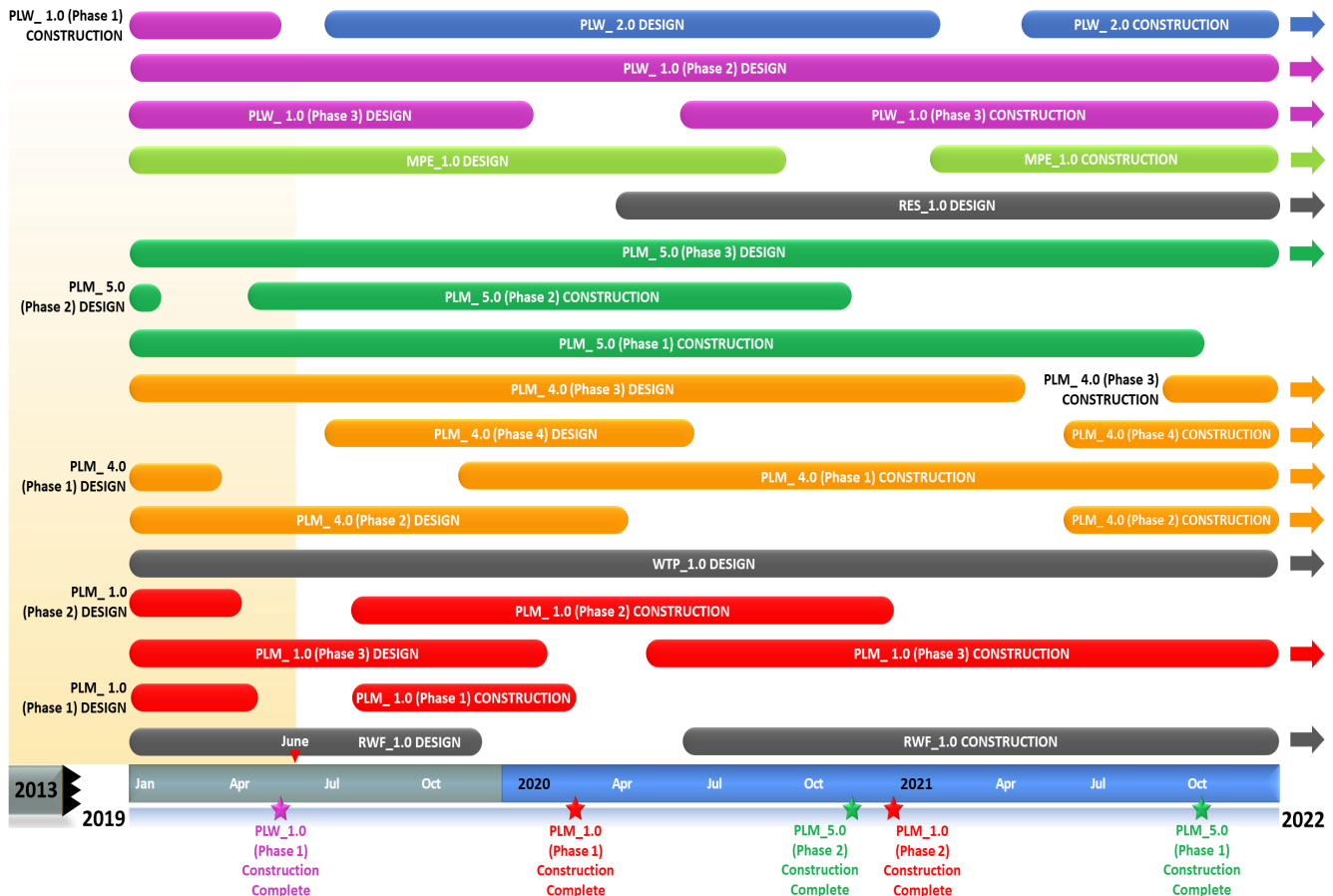
- Wilsonville Area Pipeline Project (PLM_1.1)
Construction Invitation to Bid (ITB) (July 2)
- Willamette Water Supply System (WWSP) Water Treatment Plant (WTP_1.0) Equipment Procurement (July 30)

Upcoming Procurements

- None at this time

Schedule Summary

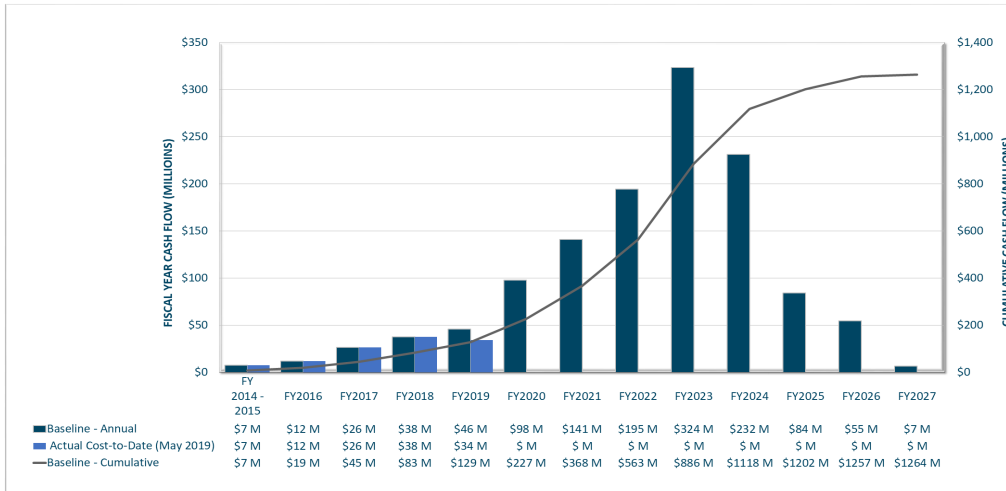
WWSP design and planning began in 2013; the Willamette Water Supply System is expected to be in service by July 2026. Below are the major milestones and activities forecasted from 2019 to 2022*. The WWSP team is committed to on-time delivery. See page 4 for descriptions of the projects referenced below.



*The actual order and duration of projects continues to be refined and is subject to change.

Forecast Cost Summary

The graph below illustrates the projected WWSP cash flow by fiscal year (FY July 1 to June 30)*. The cumulative cash flow establishes the budgeted \$1.3 billion, which accounts for actual and current projected costs, including projected escalation in the cost of labor, materials, and equipment required to build WWSP projects.



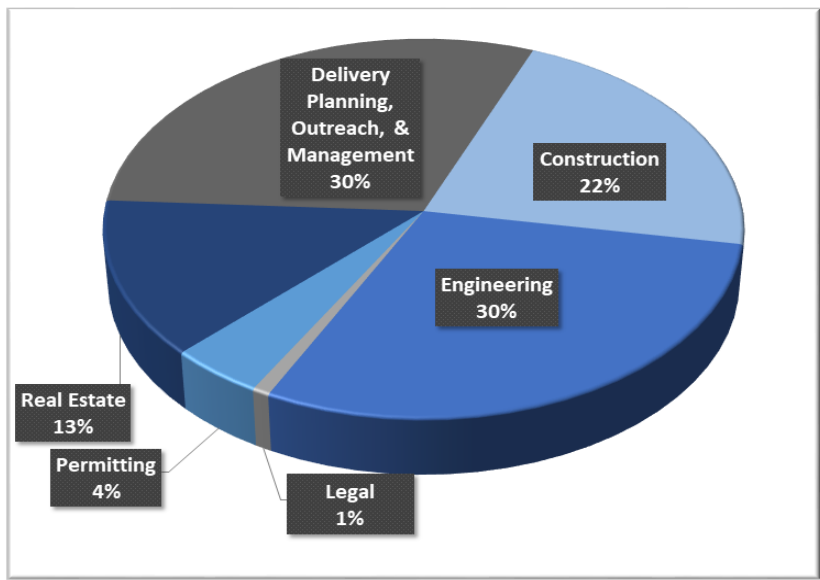
Costs for FY 2019 are \$34 million. Cumulative costs are projected to be \$129 million through the end of FY 2019.

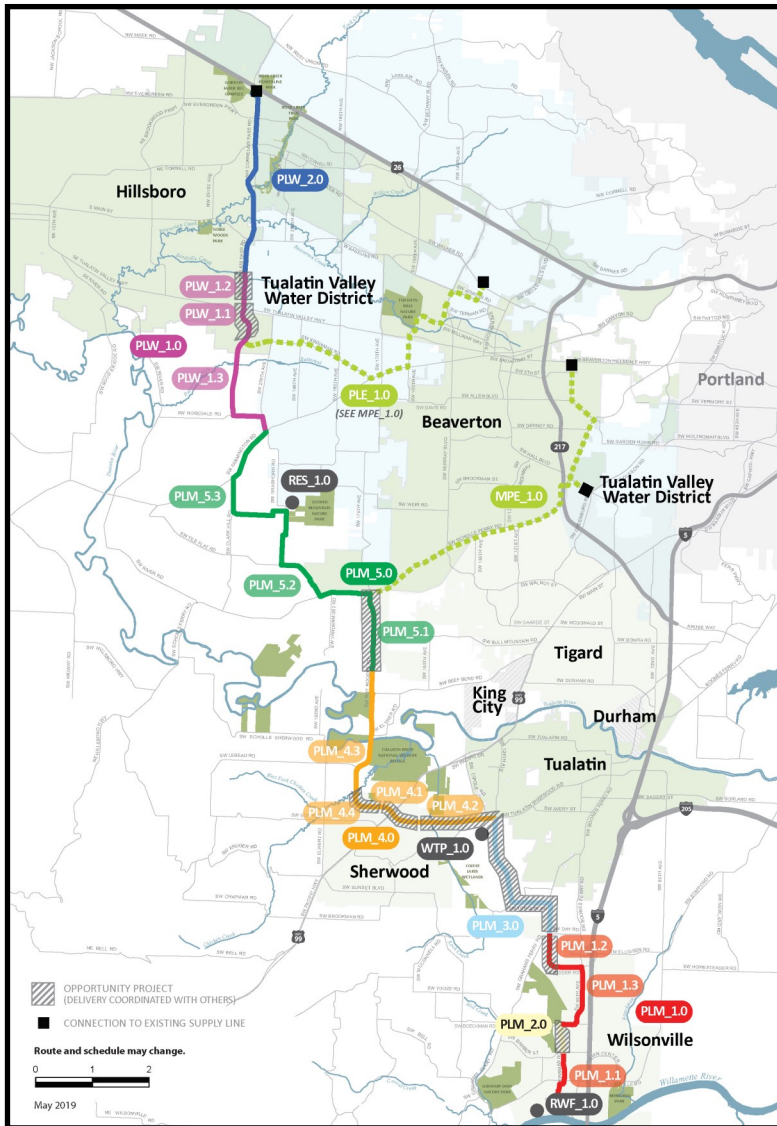
*Data continues to be refined and is subject to change.

Cumulative Cost Summary

WWSP cumulative costs are tracked and updated monthly. The chart below summarizes the distribution of cumulative costs through May 2019.

Cumulative Water Supply Program costs to date are approximately \$117 million, with the majority spent on planning, engineering, construction, and real estate activities.





WTP_1.0 Willamette Water Supply System Water Treatment Plant (Water Treatment Plant (WTP))

Description: 60-million gallon per day water treatment plant (WTP_1.0), including a finished water pump station (FPS_1.0) and a control system (DCS_1.0) located near Sherwood.

Status: Design Phase (WTP/FPS Construction Start: 03/2022)
Design Phase (DCS Construction Start: 03/2022)

RWF_1.0 Raw Water Facilities Expansion (Raw Water Facilities (RWF) Expansion)

Description: Expansion of the existing raw water pump station and intake at the Willamette River WTP (WRWTP) in Wilsonville to 60 million gallons per day of initial capacity for the Willamette Water Supply System.

Status: Design Phase (Construction Start: 06/2020)

For more information about the WWSP, visit www.ourreliablewater.org or call 503.941.4570.

PLW_2.0 Cornelius Pass Pipeline Project (Frances Road to Highway 26)

Description: 3.3-mile water pipeline along Cornelius Pass Rd. from Frances Rd. to Hwy 26; connects to existing supply lines for City of Hillsboro and TVWD.

Status: Design Phase (Design Start: 07/2019)

PLW_1.0 South Hillsboro Area Pipeline Project (Farmington Road to Frances Road)

Description: 3.9-mile water pipeline from SW Farmington Rd. at SW 209th Ave. to Cornelius Pass Rd. at Frances Rd.; also east on Kinnaman Rd. between Cornelius Pass Rd. and SW 209th Ave.

Status: Construction Phase (Phase 1: Complete; Phase 3 Construction Start: 06/2020)

MPE_1.0 Metzger Pipeline East Project (Roy Rogers Road to Beaverton Hillsdale Hwy)

Description: 7.3-mile water pipeline to be built in lieu of PLE_1.0 along SW Scholls Ferry Rd. between SW Roy Rogers Rd. and Allen Blvd.; connects to Metzger service area at SW Oleson Rd. and TVWD's system.

Status: Design Phase (Construction Start: 01/2021)

RES_1.0 South Beaverton Area Water Storage Tanks (Storage Tanks)

Description: Two 15-million gallon storage tanks located on Cooper Mountain.

Status: Planning Phase (Design Start: 04/2020)

PLM_5.0 Scholls Area Pipeline Project (North of Beef Bend Road to Farmington Road)

Description: 7.2-mile water pipeline from SW Roy Rogers Rd. 0.5-mile north of SW Beef Bend Rd. to SW Farmington Rd. at SW 209th Ave.

Status: Construction Phase (Phase 1 Construction Complete: 10/2021; Phase 2 Complete: 11/2020)

PLM_4.0 Tualatin-Sherwood Area Pipeline Project (SW 124th Avenue to north of Beef Bend Road)

Description: 5.3-mile water pipeline from 124th Ave. at SW Tualatin Sherwood Rd. along SW Roy Rogers Rd. to 0.5 miles north of SW Beef Bend Rd.

Status: Design Phase (Phase 1 Construction Start: 11/2019)

PLM_3.0 124th Avenue Partnership Project (SW 124th Avenue Extension)

Description: 2.7-mile water pipeline from Grahams Ferry Rd. at Day Rd. to 124th Ave. at SW Tualatin Sherwood Rd.

Status: Complete

PLM_2.0 Kinsman Road Partnership Project (Kinsman Road Extension)

Description: 0.5-mile water pipeline along Kinsman Rd. between Barber St. and Boeckman Rd.

Status: Complete

PLM_1.0 Wilsonville Area Pipeline Project (WRWTP to Day Road)

Description: 3.0-mile water pipeline from WRWTP to the intersection of SW Garden Acres Rd. at Day Rd.

Status: Construction Phase (Phase 1 Construction Complete: 02/2020; Phase 2 Complete: 12/2020)