

**Our Future Water Supply**

Tualatin Valley Water District (TVWD) and the City of Hillsboro, collectively referred to as the Partners, have identified the Willamette Water Supply System as the best option for future delivery of drinking water to their service areas in Washington County. Development of the Willamette Water Supply System is being led by the Partners. Other water providers in the region are also looking at their options for future participation. The mid-Willamette River at Wilsonville will be the new water supply source for the Willamette Water Supply System. Although current demands are met through other sources, the addition of a new source will provide improved water supply reliability and system resiliency. Developing an additional water supply through a partnership supports the region’s plans for responsible growth within the urban growth boundary.

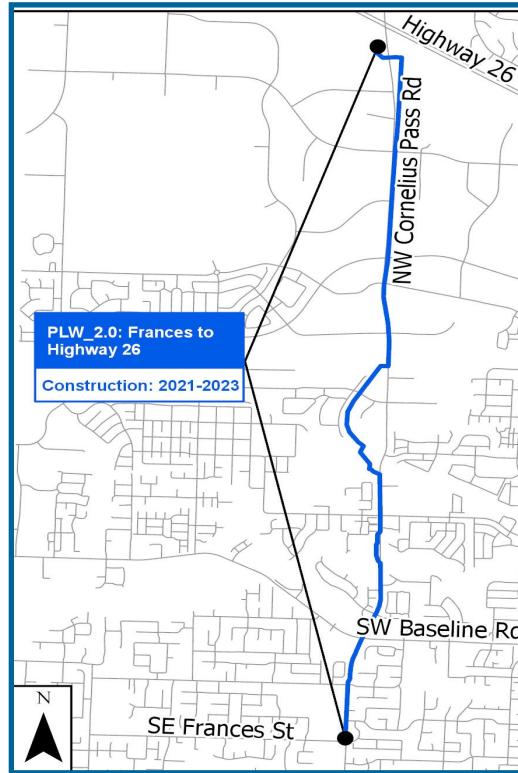
# Willamette Water Supply

## Our Reliable Water

Monthly Progress Report

Month End May 2019

### Cornelius Pass Pipeline Project

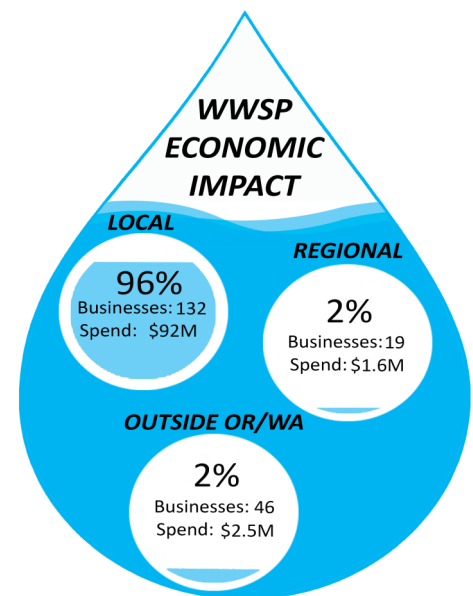


The Cornelius Pass Pipeline Project (PLW\_2.0) includes installation of 3.3 miles of 48-inch diameter pipeline that extends from SE Frances Street to Highway 26 where it connects into the existing City of Hillsboro and Tualatin Valley Water District (TVWD) supply lines. Willamette Water Supply Program (WWSP) staff are in the process of procuring a design consultant for this final pipeline design project and expect to begin the design in July 2019. The pipeline alignment will likely be located mostly within a lane of traffic and include five trenchless crossings, two open cut creek crossings, four turnouts, and pressure/flow control facilities. Construction is scheduled to begin the summer of 2021.



### Local Businesses Benefit from WWSP

Two construction projects are complete, three projects are under construction, two construction procurements are in progress, and 13 projects are under design. Additional pipeline construction procurements are anticipated in late 2019 and early 2020. In addition, the Raw Water Facility and Water Treatment Plant Construction Manager/General Contractors (CM/GCs) are developing bidding opportunities for businesses to support upcoming construction for those facilities. The WWSP is positively contributing to the Oregon and Washington economy. To learn more, go to [www.ourreliablewater.org/business-utilization-info/](http://www.ourreliablewater.org/business-utilization-info/).



Data through Q4 2018

## Procurement & Business Opportunities

WWSP staff are preparing for several upcoming professional services and construction contractor procurements. Listed below are active procurements and upcoming events and procurements. Procurement opportunities are also published at <http://www.ourreliablewater.org/business-opportunities>.

### Active Procurements

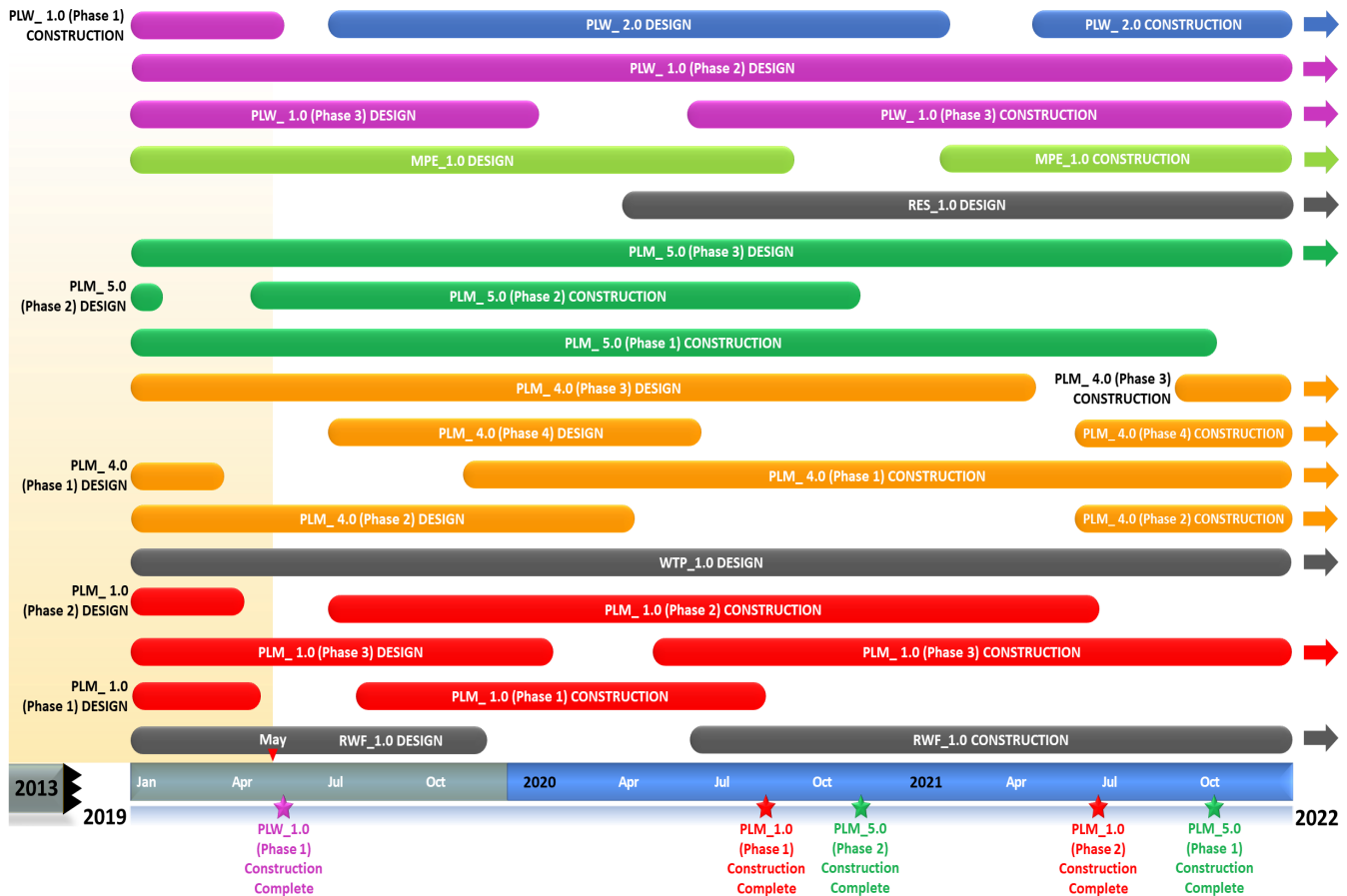
- Wilsonville Area Pipeline Project (PLM\_1.1)  
Construction Invitation to Bid (ITB) (July 2)
- Wilsonville Area Pipeline Project (PLM\_1.2)  
Construction ITB (June 3)

### Upcoming Procurements

- None at this time

## Schedule Summary

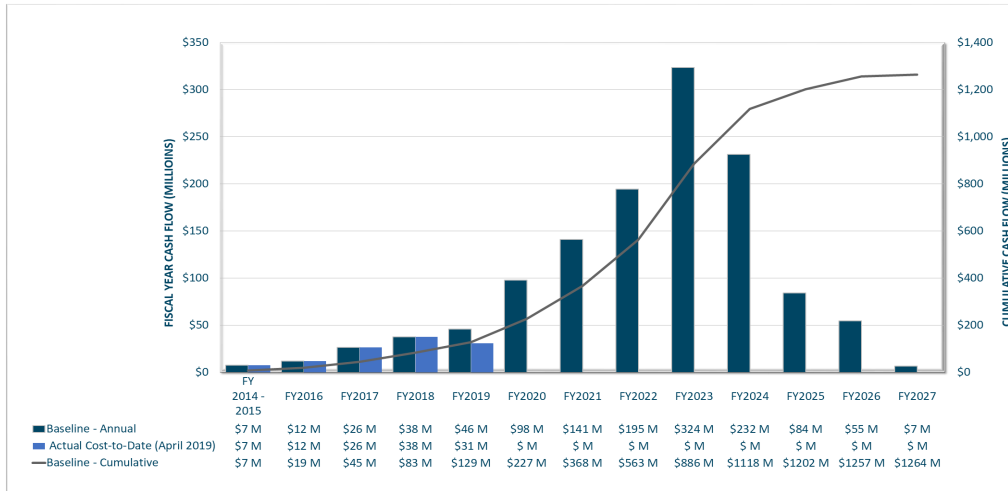
WWSP design and planning began in 2013; the Willamette Water Supply System is expected to be in service by July 2026. Below are the major milestones and activities forecasted from 2019 to 2022\*. The WWSP team is committed to on-time delivery. See page 4 for descriptions of the projects referenced below.



\*The actual order and duration of projects continues to be refined and is subject to change.

## Forecast Cost Summary

The graph below illustrates the projected WWSP cash flow by fiscal year (FY July 1 to June 30)\*. The cumulative cash flow establishes the budgeted \$1.3 billion, which accounts for actual and current projected costs, including projected escalation in the cost of labor, materials, and equipment required to build WWSP projects.



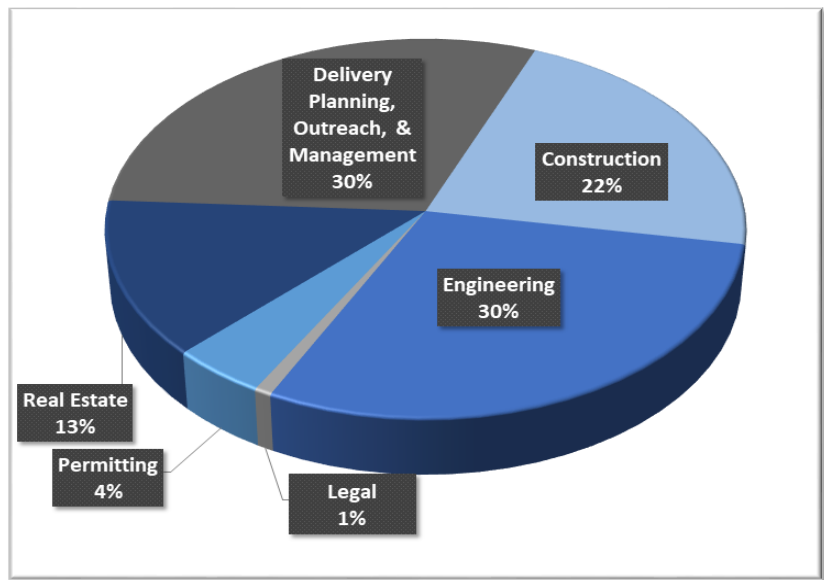
Costs for FY 2019 are \$31 million. Cumulative costs are projected to be \$129 million through the end of FY 2019.

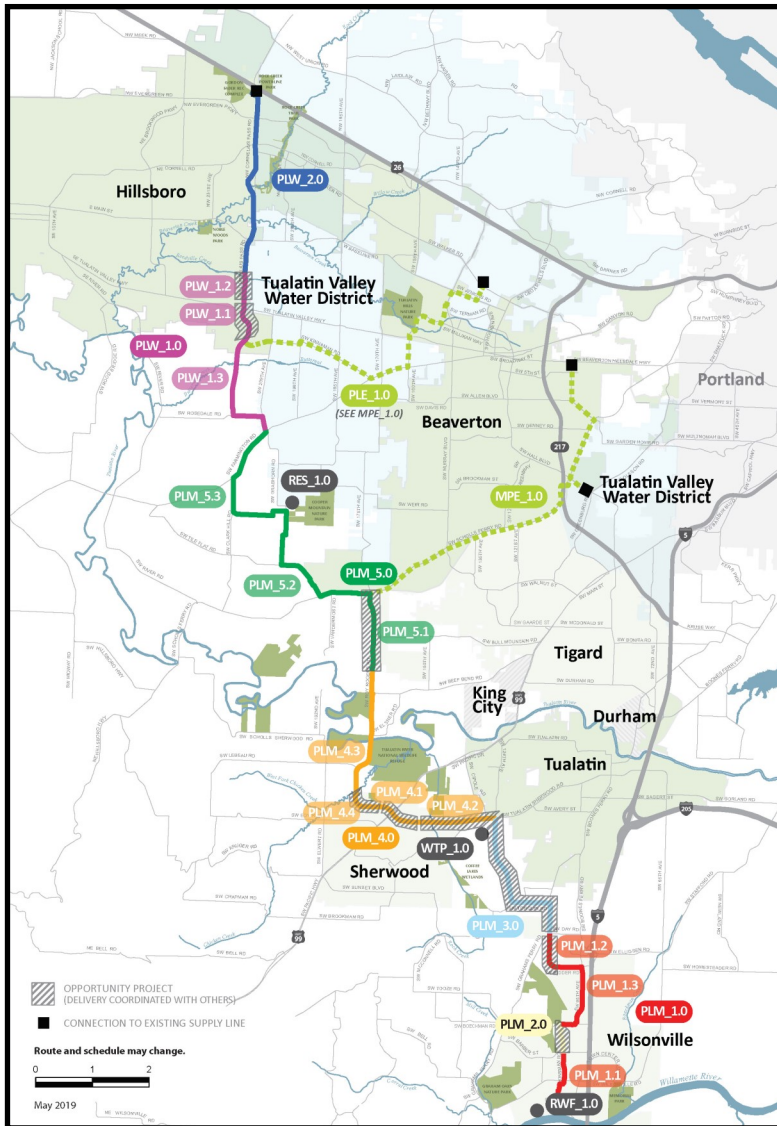
*\*Data continues to be refined and is subject to change.*

## Cumulative Cost Summary

WWSP cumulative costs are tracked and updated monthly. The chart below summarizes the distribution of cumulative costs through April 2019.

**Cumulative Water Supply Program costs to date are approximately \$114 million, with the majority spent on planning, engineering, construction, and real estate activities.**





**WTP\_1.0 Willamette Water Supply System Water Treatment Plant (Water Treatment Plant (WTP))**

*Description:* 60-million gallon per day water treatment plant (WTP\_1.0), including a finished water pump station (FPS\_1.0) and a control system (DCS\_1.0) located near Sherwood.

*Status:* Design Phase (WTP/FPS Construction Start: 03/2022)  
Design Phase (DCS Construction Start: 03/2022)

**RWF\_1.0 Raw Water Facilities Expansion (Raw Water Facilities (RWF) Expansion)**

*Description:* Expansion of the existing raw water pump station and intake at the Willamette River WTP (WRWTP) in Wilsonville to 60 million gallons per day of initial capacity for the Willamette Water Supply System.

*Status:* Design Phase (Construction Start: 06/2020)

*For more information about the WWSP, visit [www.ourreliablewater.org](http://www.ourreliablewater.org) or call 503.941.4570.*

**PLW\_2.0 Cornelius Pass Pipeline Project (Frances Road to Highway 26)**

*Description:* 3.3-mile water pipeline along Cornelius Pass Rd. from Frances Rd. to Hwy 26; connects to existing supply lines for City of Hillsboro and TVWD.

*Status:* Planning Phase (Design Start: 07/2019)

**PLW\_1.0 South Hillsboro Area Pipeline Project (Farmington Road to Frances Road)**

*Description:* 3.9-mile water pipeline from SW Farmington Rd. at SW 209th Ave. to Cornelius Pass Rd. at Frances Rd.; also east on Kinnaman Rd. between Cornelius Pass Rd. and SW 209th Ave.

*Status:* Construction Phase (Phase 1 Construction Complete: 05/2019; Phase 3 Construction Start: 06/2020)

**MPE\_1.0 Metzger Pipeline East Project (Roy Rogers Road to Beaverton Hillsdale Hwy)**

*Description:* 7.3-mile water pipeline to be built in lieu of PLE\_1.0 along SW Scholls Ferry Rd. between SW Roy Rogers Rd. and Allen Blvd.; connects to Metzger service area at SW Oleson Rd. and TVWD's system.

*Status:* Design Phase (Construction Start: 01/2021)

**RES\_1.0 South Beaverton Area Water Storage Tanks (Storage Tanks)**

*Description:* Two 15-million gallon storage tanks located on Cooper Mountain.

*Status:* Planning Phase (Design Start: 04/2020)

**PLM\_5.0 Scholls Area Pipeline Project (North of Beef Bend Road to Farmington Road)**

*Description:* 7.2-mile water pipeline from SW Roy Rogers Rd. 0.5-mile north of SW Beef Bend Rd. to SW Farmington Rd. at SW 209th Ave.

*Status:* Construction Phase (Phase 1 Construction Complete: 10/2021; Phase 2 Construction Start: 04/2019)

**PLM\_4.0 Tualatin-Sherwood Area Pipeline Project (SW 124th Avenue to north of Beef Bend Road)**

*Description:* 5.3-mile water pipeline from 124th Ave. at SW Tualatin Sherwood Rd. along SW Roy Rogers Rd. to 0.5 miles north of SW Beef Bend Rd.

*Status:* Design Phase (Phase 1 Construction Start: 11/2019)

**PLM\_3.0 124th Avenue Partnership Project (SW 124th Avenue Extension)**

*Description:* 2.7-mile water pipeline from Grahams Ferry Rd. at Day Rd. to 124th Ave. at SW Tualatin Sherwood Rd.

*Status:* Complete

**PLM\_2.0 Kinsman Road Partnership Project (Kinsman Road Extension)**

*Description:* 0.5-mile water pipeline along Kinsman Rd. between Barber St. and Boeckman Rd.

*Status:* Complete

**PLM\_1.0 Wilsonville Area Pipeline Project (WRWTP to Day Road)**

*Description:* 3.0-mile water pipeline from WRWTP to the intersection of SW Garden Acres Rd. at Day Rd.

*Status:* Design Phase (Phase 1 & 2 Construction Start: 07/2019)