

Our Future Water Supply

Tualatin Valley Water District (TVWD) and the City of Hillsboro, collectively referred to as the Partners, have identified the Willamette Water Supply System as the best option for future delivery of drinking water to their service areas in Washington County. Development of the Willamette Water Supply System is being led by the Partners. Other water providers in the region are also looking at their options for future participation. The mid-Willamette River at Wilsonville will be the new water supply source for the Willamette Water Supply System. Although current demands are met through other sources, the addition of a new source will provide improved water supply reliability and system resiliency. Developing an additional water supply through a partnership supports the region's plans for responsible growth within the urban growth boundary.

Willamette Water Supply

Our Reliable Water

Monthly Progress Report

Month End April 2019

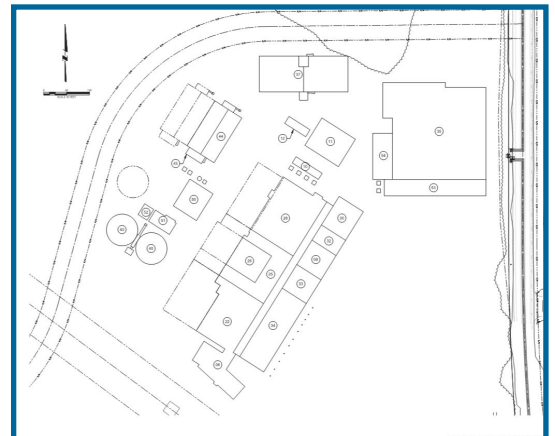
Water Treatment Plant 30 Percent Design Milestone

The Willamette Water Supply System (WWSS) Water Treatment Plant (WTP) will be a new seismically resilient plant capable of initially producing 60 million gallons of treated water per day. The design consultant, CDM Smith, began design in July 2018 and has completed 30 percent design. Traditional design phase milestones are 30, 60, and 90 percent. To attain 30 percent, CDM Smith completed the following (in addition to other tasks):

- Gathered field data for detailed design (survey, geotechnical, utility locations)
- Prepared a preliminary design report and hundreds of design drawings that include all information gathered and developed as part of 30 percent design.
- Conducted a value engineering workshop to decrease cost, improve constructability, and reduce public impacts.

- Evaluated existing and future infrastructure (power, natural gas, telephone)
- Performed traffic analyses to determine construction impacts and traffic control.

The next major design milestone, 60 percent design, is scheduled for completion early 2020.



WWSS Water Treatment Plant site plan

Upcoming Summer Construction

Work on the Willamette Water Supply Program (WWSP) is steadily shifting from planning to construction. More construction means more information to share, and staff are working through a variety of outlets to keep the public informed as the WWSP moves toward completion in 2026. These include mailings, meetings with neighbors near project sites, hosting information booths at community events, and posting website updates. Listed below are the current and upcoming construction work areas and where to find information:

South Hillsboro Area Pipeline Project

Location: Phase 1 (PLW_1.1) from Blanton Rd. to TV Hwy. (complete by summer)

Information: [South Hillsboro](#) or [WWSP](#)

Scholls Area Pipeline Project

Location: Phase 1 (PLM_5.1) from Beef Bend Rd. to Scholls Ferry Rd.

Location: Phase 2 (PLM_5.2) from Scholls Ferry Rd. to Grabhorn Rd.

Information: [Washington County](#), [WWSP](#), or [Get Us There](#)

Wilsonville Area Pipeline Project

Location: Phase 1 (PLM_1.1) from Raw Water Facility to Wilsonville Rd.

Location: Phase 2 (PLM_1.2) from Garden Acres Rd. to SW 124th Ave. (administered by City of Wilsonville)

Information: [City of Wilsonville](#) or [WWSP](#)

Call the WWSP hotline at 503-941-4570 or visit website at www.ourreliablewater.org for updates and additional information.

Procurement & Business Opportunities

WWSP staff are preparing for several upcoming professional services and construction contractor procurements. Listed below are active procurements and upcoming events and procurements. Procurement opportunities are also published at <http://www.ourreliablewater.org/business-opportunities>.

Active Procurements

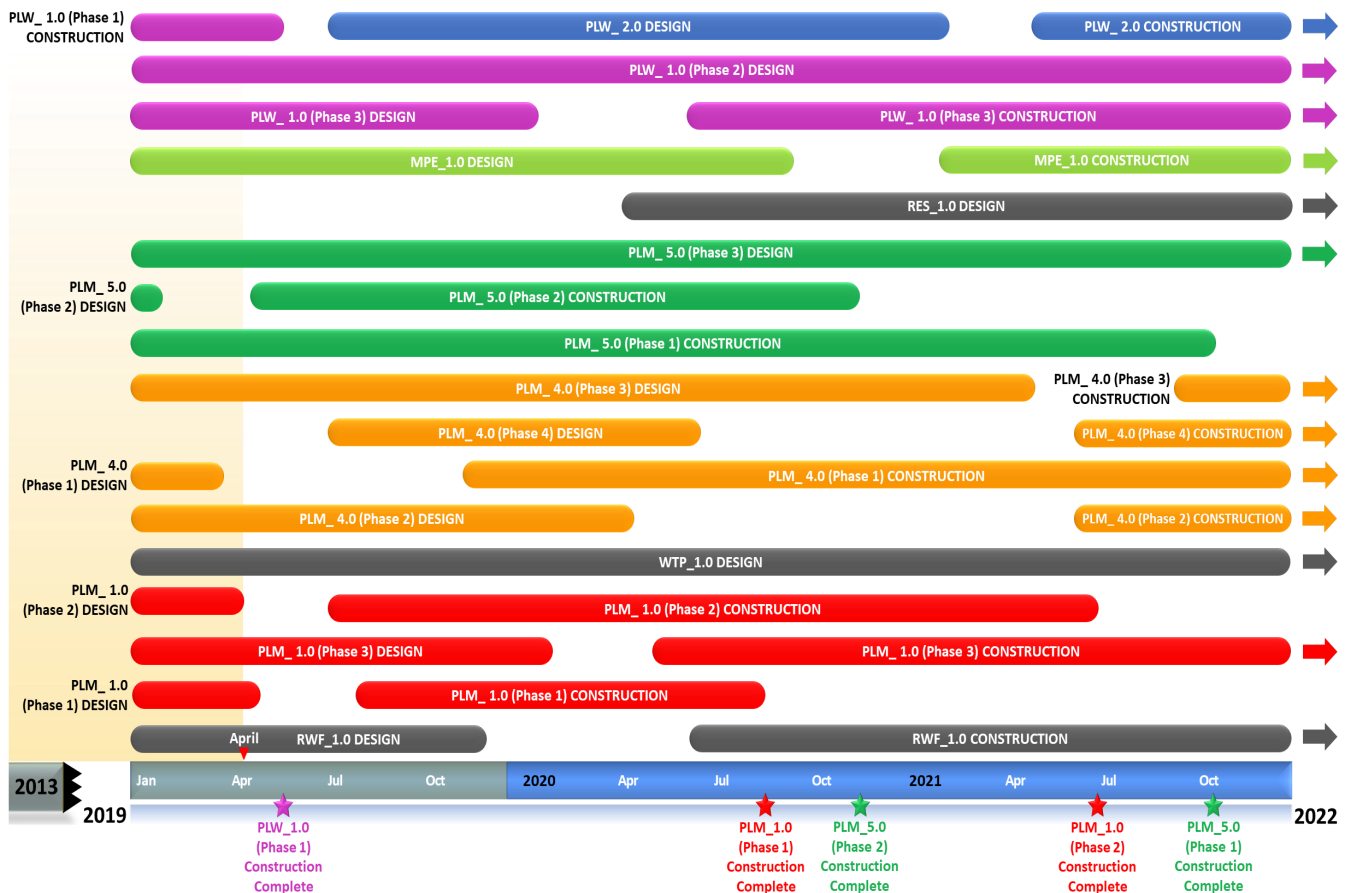
- Wilsonville Area Pipeline Project (PLM_1.2) Construction Invitation to Bid (ITB) administered by City of Wilsonville

Upcoming Procurements

- Wilsonville Area Pipeline Project (PLM_1.1) Construction ITB (Quarter 2, 2019)

Schedule Summary

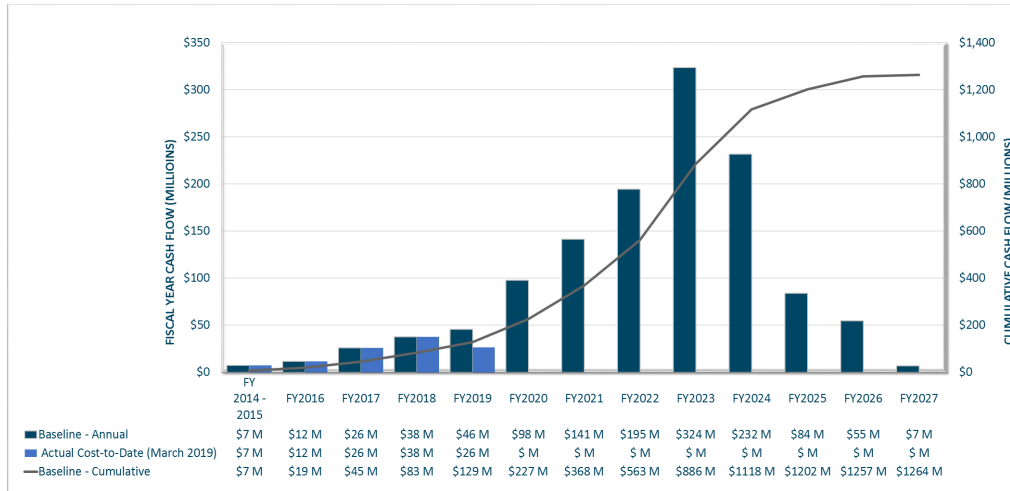
WWSP design and planning began in 2013; the Willamette Water Supply System is expected to be in service by July 2026. Below are the major milestones and activities forecasted from 2019 to 2022*. The WWSP team is committed to on-time delivery. See page 4 for descriptions of the projects referenced below.



*The actual order and duration of projects continues to be refined and is subject to change.

Forecast Cost Summary

The graph below illustrates the projected WWSP cash flow by fiscal year (FY July 1 to June 30)*. The cumulative cash flow establishes the budgeted \$1.3 billion, which accounts for actual and current projected costs, including projected escalation in the cost of labor, materials, and equipment required to build WWSP projects.



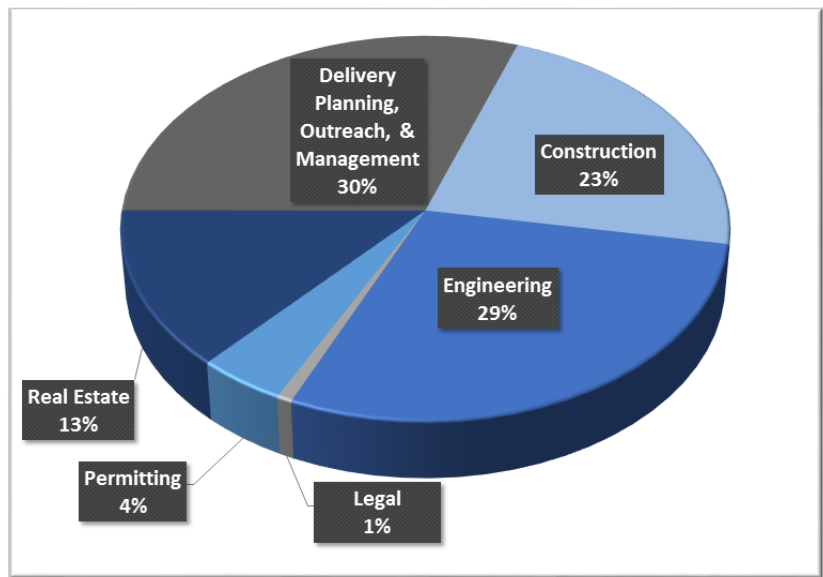
Costs for FY 2019 are \$26 million. Cumulative costs are projected to be \$129 million through the end of FY 2019.

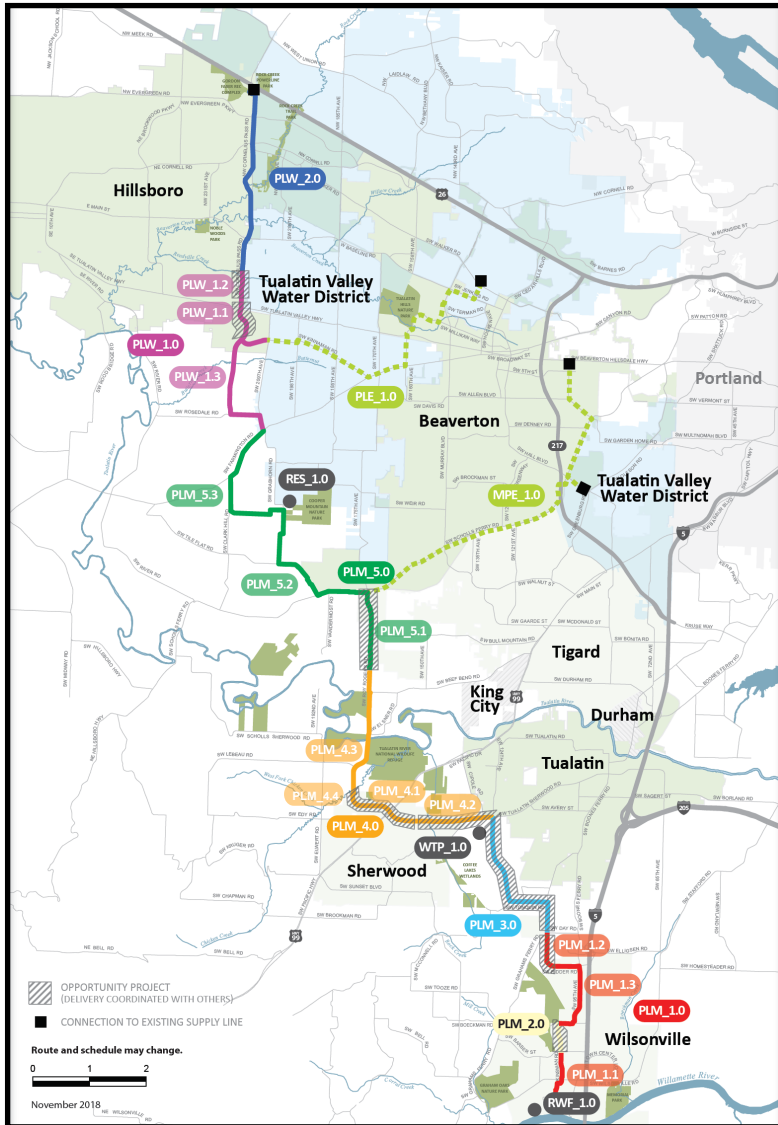
*Data continues to be refined and is subject to change.

Cumulative Cost Summary

WWSP cumulative costs are tracked and updated monthly. The chart below summarizes the distribution of cumulative costs through March 2019.

Cumulative Water Supply Program costs to date are approximately \$109 million, with the majority spent on planning, engineering, construction, and real estate activities.





PLW_2.0 Cornelius Pass Pipeline Project
(Frances Road to Highway 26)

Description: 3.4-mile water pipeline along Cornelius Pass Rd. from Frances Rd. to Hwy 26; connects to existing supply lines for City of Hillsboro and TVWD.
Status: Planning Phase (Design Start: 07/2019)

PLW_1.0 South Hillsboro Area Pipeline Project
(Farmington Road to Frances Road)

Description: 3.9-mile water pipeline from SW Farmington Rd. at SW 209th Ave. to Cornelius Pass Rd. at Frances Rd.; also east on Kinnaman Rd. between Cornelius Pass Rd. and SW 209th Ave.
Status: Construction Phase (Phase 1 Construction Complete: 05/2019; Phase 3 Construction Start: 06/2020)

MPE_1.0 Metzger Pipeline East Project
(Roy Rogers Road to Beaverton Hillsdale Hwy)

Description: 7.3-mile water pipeline to be built in lieu of PLE_1.0 along SW Scholls Ferry Rd. between SW Roy Rogers Rd. and Allen Blvd.; connects to Metzger service area at SW Oleson Rd. and TVWD's system.
Status: Design Phase (Construction Start: 01/2021)

RES_1.0 South Beaverton Area Water Storage Tanks (Storage Tanks)

Description: Two 15-million gallon storage tanks located on Cooper Mountain.
Status: Planning Phase (Design Start: 04/2020)

PLM_5.0 Scholls Area Pipeline Project
(North of Beef Bend Road to Farmington Road)

Description: 7.2-mile water pipeline from SW Roy Rogers Rd. 0.5-mile north of SW Beef Bend Rd. to SW Farmington Rd. at SW 209th Ave.
Status: Construction Phase (Phase 1 Construction Complete: 10/2021; Phase 2 Construction Start: 04/2019)

PLM_4.0 Tualatin-Sherwood Area Pipeline Project
(SW 124th Avenue to north of Beef Bend Road)

Description: 5.3-mile water pipeline from 124th Ave. at SW Tualatin Sherwood Rd. along SW Roy Rogers Rd. to 0.5 miles north of SW Beef Bend Rd.
Status: Design Phase (Phase 1 Construction Start: 11/2019)

PLM_3.0 124th Avenue Partnership Project
(SW 124th Avenue Extension)

Description: 2.7-mile water pipeline from Grahams Ferry Rd. at Day Rd. to 124th Ave. at SW Tualatin Sherwood Rd.
Status: Complete

PLM_2.0 Kinsman Road Partnership Project
(Kinsman Road Extension)

Description: 0.5-mile water pipeline along Kinsman Rd. between Barber St. and Boeckman Rd.
Status: Complete

PLM_1.0 Wilsonville Area Pipeline Project
(WRWTP to Day Road)

Description: 3.0-mile water pipeline from WRWTP to the intersection of SW Garden Acres Rd. at Day Rd.
Status: Design Phase (Phase 1 & 2 Construction Start: 07/2019)

WTP_1.0 Willamette Water Supply System Water Treatment Plant
(Water Treatment Plant (WTP))

Description: 60-million gallon per day water treatment plant (WTP_1.0), including a finished water pump station (FPS_1.0) and a control system (DCS_1.0) located near Sherwood.

FPS_1.0

DCS_1.0

Status: Design Phase (WTP/FPS Construction Start: 03/2022)
Design Phase (DCS Construction Start: 03/2022)

RWF_1.0

Raw Water Facilities Expansion
(Raw Water Facilities (RWF) Expansion)

Description: Expansion of the existing raw water pump station and intake at the Willamette River WTP (WRWTP) in Wilsonville to 60 million gallons per day of initial capacity for the Willamette Water Supply System.
Status: Design Phase (Construction Start: 06/2020)

For more information about the WWSP, visit www.ourreliablewater.org or call 503.941.4570.