

## Our Future Water Supply

Tualatin Valley Water District (TVWD) and the City of Hillsboro, collectively referred to as the Partners, have identified the Willamette Water Supply System as the best option for future delivery of drinking water to their service areas in Washington County. Development of the Willamette Water Supply System is being led by the Partners. Other water providers in the region are also looking at their options for future participation. The mid-Willamette River at Wilsonville will be the new water supply source for the Willamette Water Supply System. Although current demands are met through other sources, the addition of a new source will provide improved water supply reliability and system resiliency. Developing an additional water supply through a partnership supports the region's plans for responsible growth within the urban growth boundary.

# Willamette Water Supply

## Our Reliable Water

Monthly Progress Report

Month End February 2019

### Scholls Area Pipeline Project

The Scholls Area Pipeline Project includes installation of 7.2 miles of 66-inch diameter pipeline that extends from Roy Rogers Road to Farmington Road. Phase 1 (PLM\_5.1) consists of approximately 4.1 miles of pipeline that will be installed in coordination with Washington County's Roy Rogers Road widening project and Clean Water Service's sewer force main project. Tapani, Inc. began installing the sewer line along Roy Rogers Road in December 2018 and commenced bridge and road widening activities in 2019. Tapani plans to begin installing the Willamette Water Supply Program (WWSP) waterline in the summer of 2019. Construction for Phase 1 is anticipated to be complete by 2021; Phase 2 construction is expected to begin the summer of 2019.

### South Hillsboro Area Pipeline Project

Phase 1 of the South Hillsboro Area Pipeline Project (PLW\_1.1) includes installation of approximately one mile of 48-inch diameter pipeline beneath Cornelius Pass Road south of Tualatin Valley (TV) Highway through a portion of the new Reed's Crossing development. Construction continued in February near Blanton Road and Cornelius Pass Road with a total of 0.6 miles of pipeline installed to date. Pipe installation and testing will continue into next month. Construction for Phase 1 is anticipated to be complete by the spring of 2019; Phase 2 construction is expected to begin in 2020.



Installation of pipe at the South Hillsboro Area Pipeline Project



### We Want to Hear from You!

Got a story idea? Want to know something about the WWSP we haven't reported about? Interested in a topic we can share? Send us an email at [info@ourreliablewater.org](mailto:info@ourreliablewater.org) and let us know your thoughts.

## Procurement & Business Opportunities

WWSP staff are preparing for several upcoming professional services and construction contractor procurements. Listed below are active procurements and upcoming events and procurements. Procurement opportunities are also published at <http://www.ourreliablewater.org/business-opportunities>.

### Active Procurements

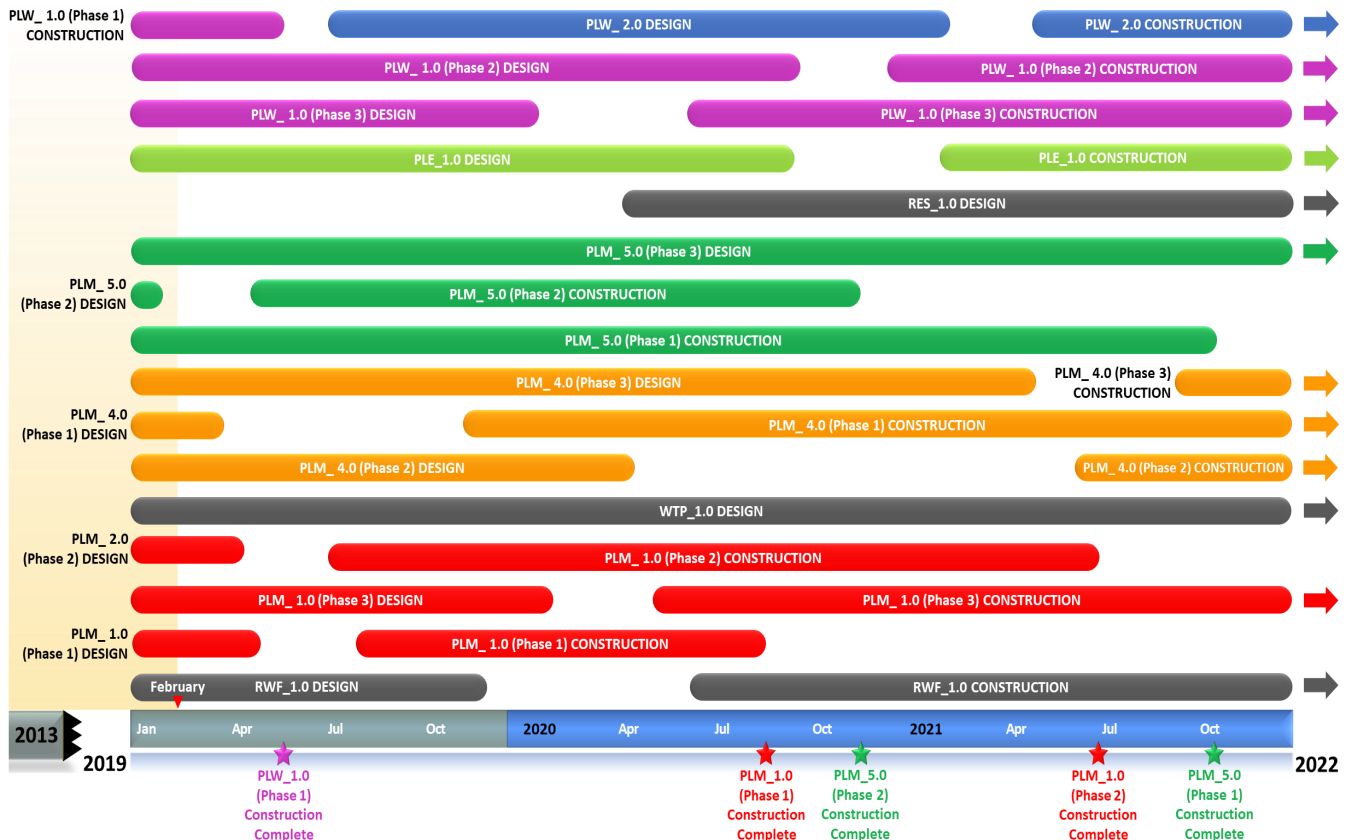
- Scholls Area Pipeline Project (PLM\_5.2) Construction Invitation to Bid (ITB)

### Upcoming Procurements

- Cornelius Pass Pipeline Project (PLW\_2.0) Design Request for Proposal (RFP) (Quarter 1, 2019)
- Wilsonville Area Pipeline Project (PLM\_1.1) Construction ITB (Quarter 2, 2019)
- Wilsonville Area Pipeline Project (PLM\_1.2) Construction ITB (Quarter 2, 2019)

## Schedule Summary

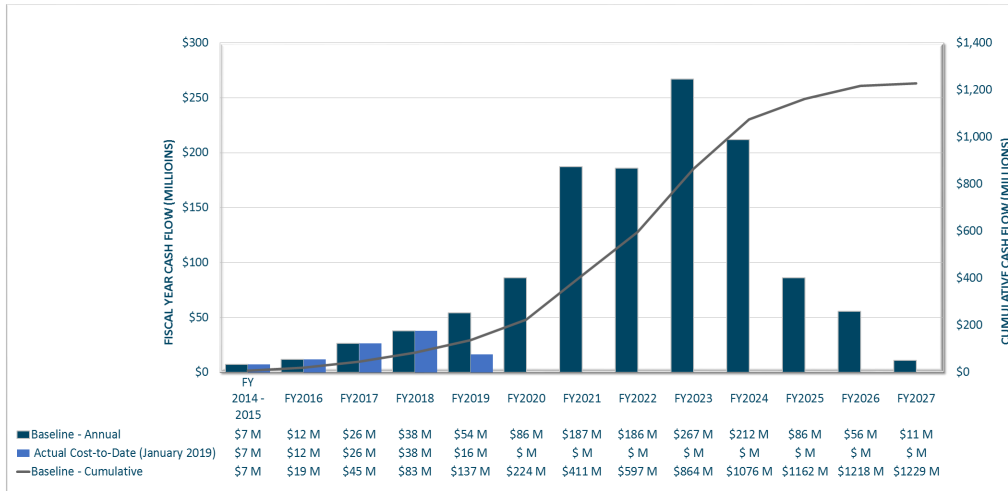
WWSP design and planning began in 2013; the Willamette Water Supply System is expected to be in service by July 2026. Below are the major milestones and activities forecasted from 2019 to 2022\*. The WWSP team is committed to on-time delivery. See page 4 for descriptions of the projects referenced below.



\*The actual order and duration of projects continues to be refined and is subject to change.

## Forecast Cost Summary

The graph below illustrates the projected WWSP cash flow by fiscal year (FY July 1 to June 30)\*. The cumulative cash flow establishes the budgeted \$1.2 billion, which accounts for actual and current projected costs, including projected escalation in the cost of labor, materials, and equipment required to build WWSP projects.



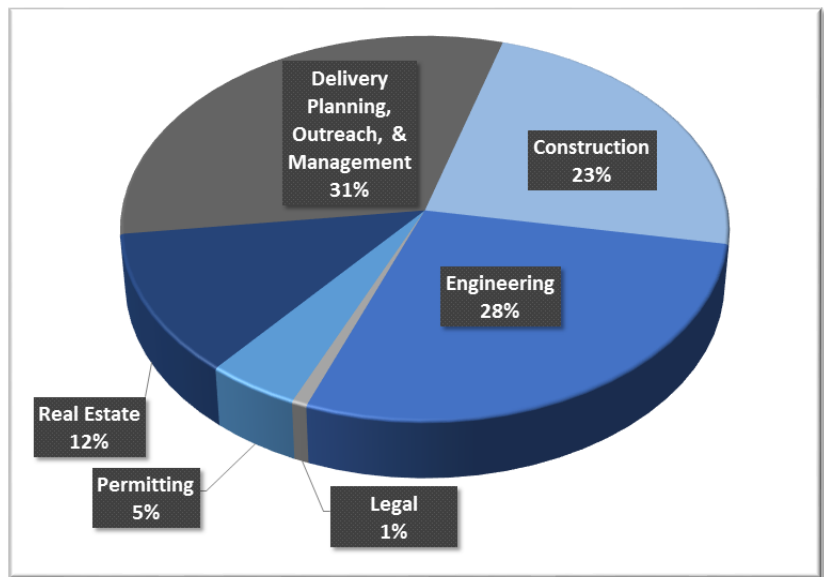
Costs for FY 2019 are \$16 million. Cumulative costs are projected to be \$137 million through the end of FY 2019.

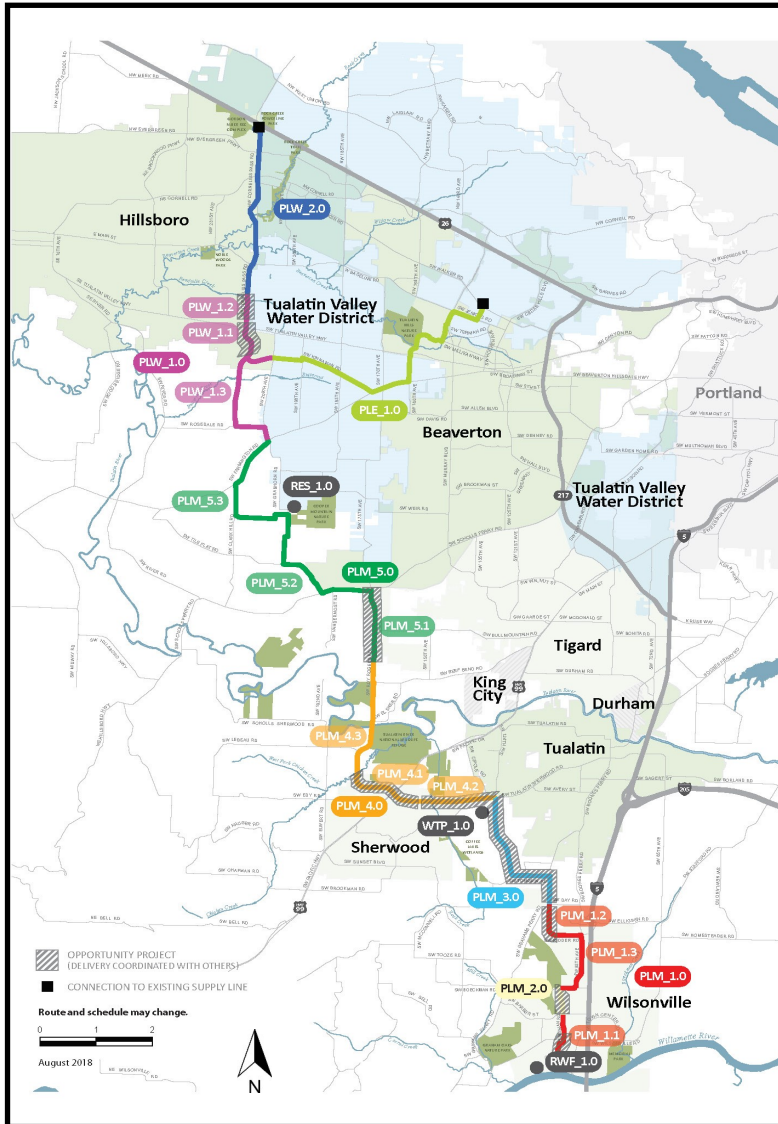
\*Data continues to be refined and is subject to change.

## Cumulative Cost Summary

WWSP cumulative costs are tracked and updated monthly. The chart below summarizes the distribution of cumulative costs through January 2019.

**Cumulative Water Supply Program costs to date are approximately \$99 million, with the majority spent on planning, engineering, construction, and real estate activities.**





**WTP\_1.0 Willamette Water Supply System Water Treatment Plant**  
(Water Treatment Plant (WTP))

**FPS\_1.0** *Description:* 60-million gallon per day water treatment plant (WTP\_1.0), including a finished water pump station (FPS\_1.0) and a control system (DCS\_1.0) located near Sherwood.

**DCS\_1.0** *Status:* Design Phase (WTP/FPS Construction Start: 03/2022)  
Design Phase (DCS Construction Start: 03/2022)

**RWF\_1.0 Raw Water Facilities Expansion**  
(Raw Water Facilities (RWF) Expansion)

*Description:* Expansion of the existing raw water pump station and intake at the Willamette River WTP (WRWTP) in Wilsonville to 60 million gallons per day of initial capacity for the Willamette Water Supply System.  
*Status:* Design Phase (Construction Start: 06/2020)

For more information about the WWSP, visit [www.ourreliablewater.org](http://www.ourreliablewater.org) or call 503.941.4570.

**PLW\_2.0 Cornelius Pass Pipeline Project**  
(Frances Road to Highway 26)

*Description:* 3.4-mile water pipeline along Cornelius Pass Rd. from Frances Rd. to Hwy 26; connects to existing supply lines for City of Hillsboro and TVWD.  
*Status:* Planning Phase (Design Start: 07/2019)

**PLW\_1.0 South Hillsboro Area Pipeline Project**  
(Farmington Road to Frances Road)

*Description:* 3.9-mile water pipeline from SW Farmington Rd. at SW 209th Ave. to Cornelius Pass Rd. at Frances Rd.; also east on Kinnaman Rd. between Cornelius Pass Rd. and SW 209th Ave.  
*Status:* Construction Phase (Phase 1 Construction Complete: 05/2019; Phase 2 Construction Start: 12/2020)

**PLE\_1.0 Beaverton Area Pipeline Project**  
(SW 209th Avenue to Walker Road)

*Description:* 5.5-mile water pipeline from SW 209th Ave. at Kinnaman Rd. to SW Cedar Hills Blvd.; connects to existing TVWD system.  
*Status:* Design Phase (Construction Start: 01/2021)

**RES\_1.0 South Beaverton Area Water Storage Tanks (Storage Tanks)**

*Description:* Two 15-million gallon storage tanks located on Cooper Mountain.  
*Status:* Planning Phase (Design Start: 04/2020)

**PLM\_5.0 Scholls Area Pipeline Project**  
(North of Beef Bend Road to Farmington Road)

*Description:* 7.2 mile water pipeline from SW Roy Rogers Rd. 0.5-mile north of SW Beef Bend Rd. to SW Farmington Rd. at SW 209th Ave.  
*Status:* Construction Phase (Phase 1 Construction Complete: 10/2021; Phase 2 Construction Start: 04/2019)

**PLM\_4.0 Tualatin-Sherwood Area Pipeline Project**  
(SW 124th Avenue to north of Beef Bend Road)

*Description:* 5.3-mile water pipeline from 124th Ave. at SW Tualatin Sherwood Rd. along SW Roy Rogers Rd. to 0.5 miles north of SW Beef Bend Rd.  
*Status:* Design Phase (Phase 1 Construction Start: 11/2019)

**PLM\_3.0 124th Avenue Partnership Project**  
(SW 124th Avenue Extension)

*Description:* 2.7-mile water pipeline from Grahams Ferry Rd. at Day Rd. to 124th Ave. at SW Tualatin Sherwood Rd.  
*Status:* Complete

**PLM\_2.0 Kinsman Road Partnership Project**  
(Kinsman Road Extension)

*Description:* 0.5-mile water pipeline along Kinsman Rd. between Barber St. and Boeckman Rd.  
*Status:* Complete

**PLM\_1.0 Wilsonville Area Pipeline Project**  
(WRWTP to Day Road)

*Description:* 3.0-mile water pipeline from WRWTP to the intersection of SW Garden Acres Rd. at Day Rd.  
*Status:* Design Phase (Phase 1 & 2 Construction Start: 07/2019)