

Our Future Water Supply

Tualatin Valley Water District (TVWD) and the City of Hillsboro, collectively referred to as the Partners, have identified the Willamette Water Supply System as the best option for future delivery of drinking water to their service areas in Washington County. Development of the Willamette Water Supply System is being led by the Partners.

Other water providers in the region are also looking at their options for future participation. The mid-Willamette River at Wilsonville will be the new water supply source for the Willamette Water Supply System. Although current demands are met through other sources, the addition of a new source will provide improved water supply reliability and system resiliency. Developing an additional water supply through a partnership supports the region's plans for responsible growth within the urban growth boundary.

Willamette Water Supply *Monthly Progress Report*

Our Reliable Water

Month End January 2019

2019 Planned Activities and Priorities

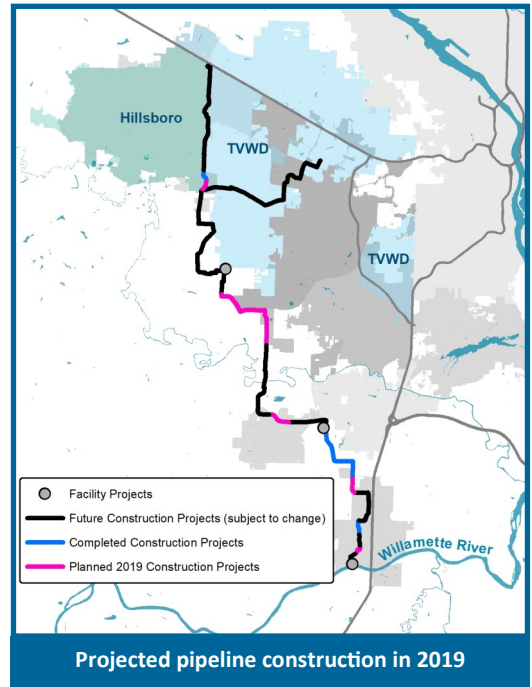
2019 is gearing up to be an important year for the Willamette Water Supply Program (WWSP). Design will progress on the majority of WWSP facilities and pipelines, while several pipeline sections will advance or begin construction. Below is an overview of some of the planned activities and milestones:

- Complete design of Raw Water Facilities and progress design on 12 other projects
- Advance seven construction projects
- Continue real estate acquisitions and obtaining land-use permits

- Support closing the Water Infrastructure Finance and Innovation Act (WIFIA) loan (see **WWSP October 2018 Monthly Rpt.**)
- Continue community outreach through open houses, booths at community activities, and business outreach events

2019 Procurement Schedule

Additional opportunities are anticipated for construction contractors and design consultants. Below are the forecasted procurement opportunities for 2019; the timing and approach are subject to change as WWSP needs evolve.



Quarter 1

- PLM_5.2 Scholls Area Pipeline Project Construction Invitation to Bid¹
- PLW_2.0 Cornelius Pass Pipeline Project Design Request for Proposal
- PLM_1.1 Wilsonville Area Pipeline Project Construction Invitation to Bid¹

Quarter 2

- PLM_1.2 Wilsonville Area Pipeline Project Construction Invitation to Bid²

Quarter 3

- PLM_4.1 Tualatin-Sherwood Area Pipeline Project Construction Invitation to Bid³
- WWSP Water Pipeline Contractors Request for Qualifications⁴

Quarter 4

- PLW_1.2 South Hillsboro Area Pipeline Project Construction Invitation to Bid³
- PLW_1.3 South Hillsboro Area Pipeline Project Construction Invitation to Bid
- RES_1.0 South Beaverton Water Storage Tanks Design Request for Proposal

1. Pre-qualified contractors only
2. Procurement by City of Wilsonville
3. Procurement by Washington County
4. Pre-qualification renewal/addition

Procurement & Business Opportunities

WWSP staff are preparing for several upcoming professional services and construction contractor procurements. Listed below are active procurements and upcoming events and procurements. Procurement opportunities are also published at <http://www.ourreliablewater.org/business-opportunities>.

Active Procurements

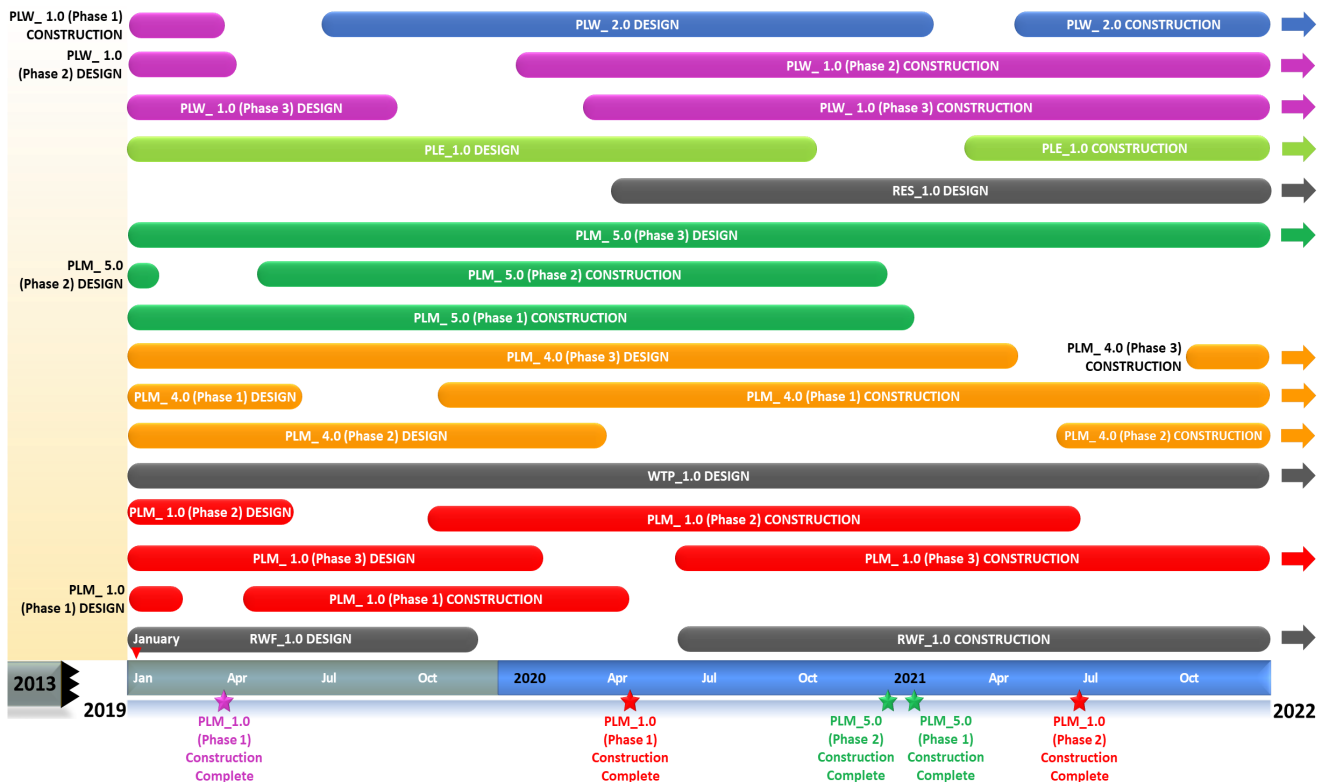
- No active procurements

Upcoming Procurements

- Scholls Area Pipeline Project (PLM_5.2) Construction Invitation to Bid (ITB) (Quarter 1, 2019)
- Wilsonville Area Pipeline Project (PLM_1.1) Construction ITB (Quarter 1, 2019)
- Cornelius Pass Pipeline Project (PLW_2.0) Design Request for Proposal (RFP) (Quarter 1, 2019)
- Wilsonville Area Pipeline Project (PLM_1.2) Construction ITB (Quarter 2, 2019)

Schedule Summary

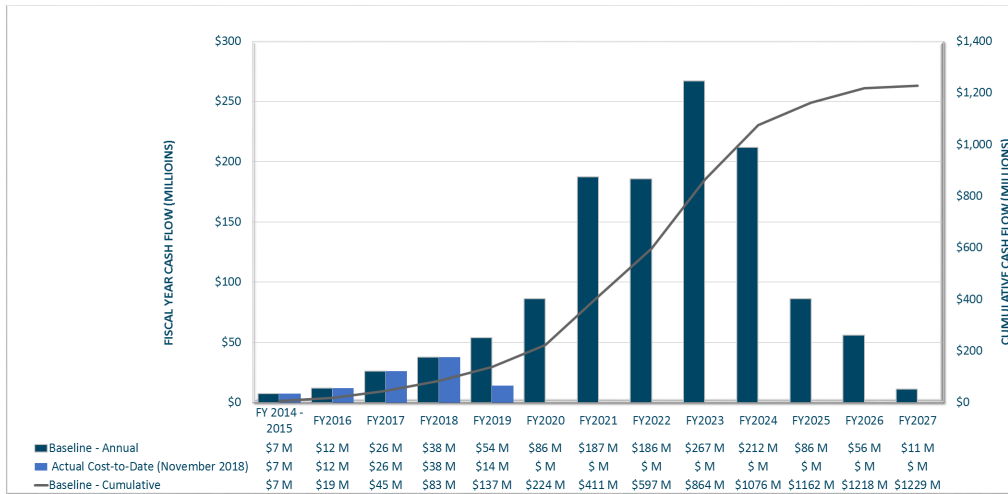
WWSP design and planning began in 2013; the Willamette Water Supply System is expected to be in service by July 2026. Below are the major milestones and activities forecasted from 2019 to 2022*. The WWSP team is committed to on-time delivery. See page 4 for descriptions of the projects referenced below.



*The actual order and duration of projects continues to be refined and is subject to change.

Forecast Cost Summary

The graph below illustrates the projected WWSP cash flow by fiscal year (FY July 1 to June 30)*. The cumulative cash flow establishes the budgeted \$1.2 billion, which accounts for actual and current projected costs, including projected escalation in the cost of labor, materials, and equipment required to build WWSP projects.



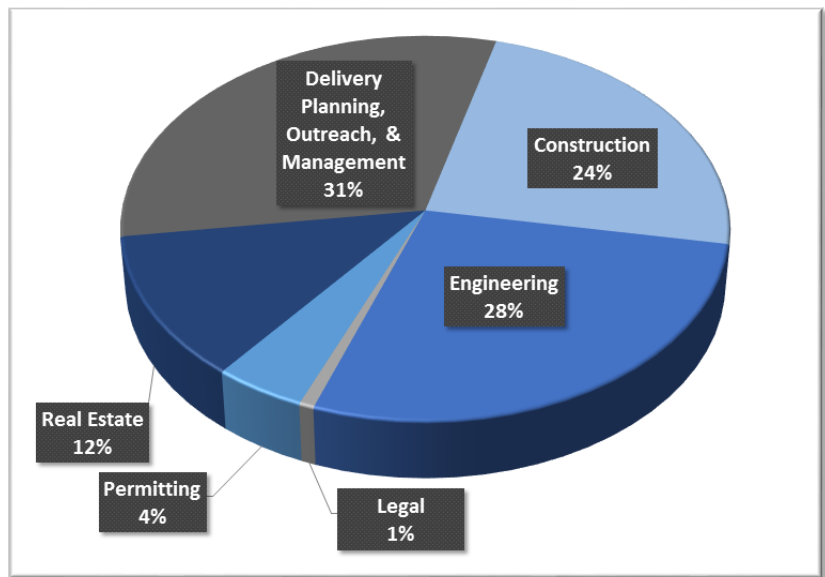
Costs for FY 2019 are \$14 million. Cumulative costs are projected to be \$137 million through the end of FY 2019.

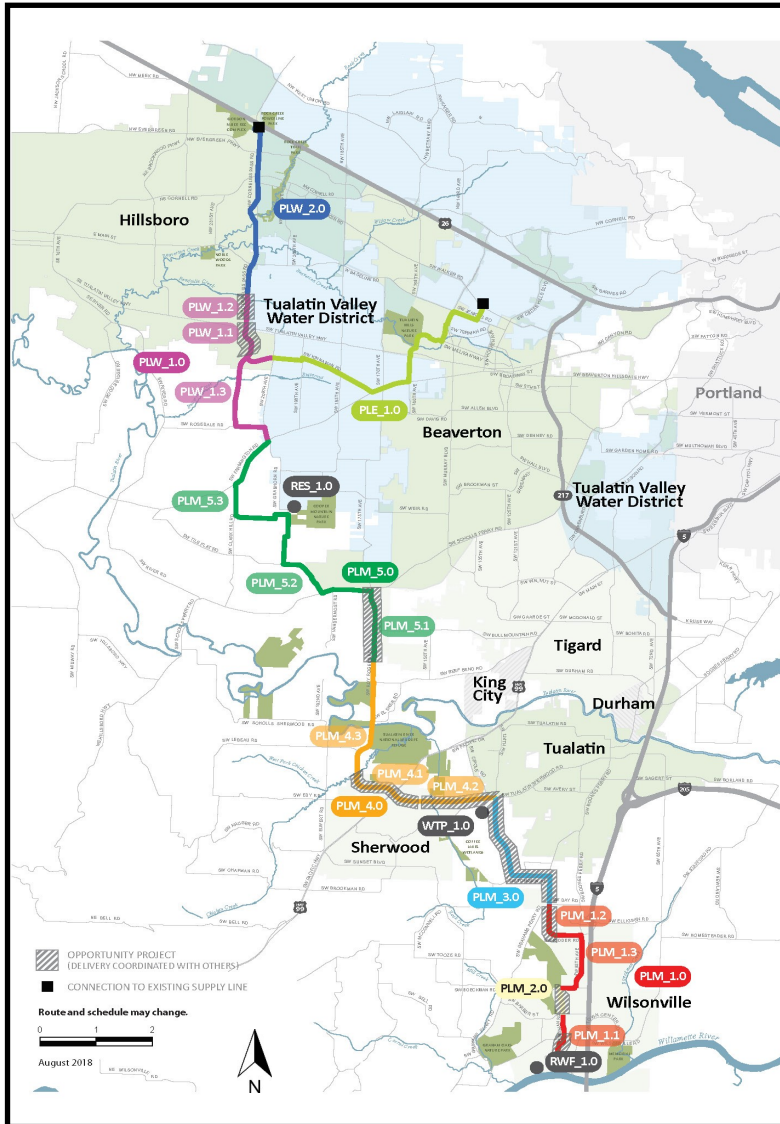
*Data continues to be refined and is subject to change.

Cumulative Cost Summary

WWSP cumulative costs are tracked and updated monthly. The chart below summarizes the distribution of cumulative costs through December 2018.

Cumulative Water Supply Program costs to date are approximately \$97 million, with the majority spent on planning, engineering, construction, and real estate activities.





WTP_1.0 Willamette Water Supply System Water Treatment Plant
(Water Treatment Plant (WTP))

FPS_1.0 *Description:* 60-million gallon per day water treatment plant (WTP_1.0), including a finished water pump station (FPS_1.0) and a control system (DCS_1.0) located near Sherwood.

DCS_1.0 *Status:* Design Phase (WTP/FPS Construction Start: 03/2022)
Design Phase (DCS Construction Start: 03/2022)

RWF_1.0 Raw Water Facilities Expansion
(Raw Water Facilities (RWF) Expansion)

Description: Expansion of the existing raw water pump station and intake at the Willamette River WTP (WRWTP) in Wilsonville to 60 million gallons per day of initial capacity for the Willamette Water Supply System.

Status: Design Phase (Construction Start: 06/2020)

For more information about the WWSP, visit www.ourreliablewater.org or call 503.941.4570.

PLW_2.0 Cornelius Pass Pipeline Project
(Frances Road to Highway 26)

Description: 3.4-mile water pipeline along Cornelius Pass Rd. from Frances Rd. to Hwy 26; connects to existing supply lines for City of Hillsboro and TVWD.

Status: Planning Phase (Design Start: 07/2019)

PLW_1.0 South Hillsboro Area Pipeline Project
(Farmington Road to Frances Road)

Description: 3.9-mile water pipeline from SW Farmington Rd. at SW 209th Ave. to Cornelius Pass Rd. at Frances Rd.; also east on Kinnaman Rd. between Cornelius Pass Rd. and SW 209th Ave.

Status: Construction Phases (Phase 1 Construction Complete: 04/2019; Phase 2 Construction Start: 01/2020)

PLE_1.0 Beaverton Area Pipeline Project
(SW 209th Avenue to Walker Road)

Description: 5.5-mile water pipeline from SW 209th Ave. at Kinnaman Rd. to SW Cedar Hills Blvd.; connects to existing TVWD system.

Status: Design Phase (Construction Start: 03/2021)

RES_1.0 South Beaverton Area Water Storage Tanks (Storage Tanks)

Description: Two 15-million gallon storage tanks located on Cooper Mountain.

Status: Planning Phase (Design Start: 04/2020)

PLM_5.0 Scholls Area Pipeline Project
(North of Beef Bend Road to Farmington Road)

Description: 7.2 mile water pipeline from SW Roy Rogers Rd. 0.5-mile north of SW Beef Bend Rd. to SW Farmington Rd. at SW 209th Ave.

Status: Construction Phases (Phase 1 Construction Start: 12/2018; Phase 2 Construction Start: 05/2019)

PLM_4.0 Tualatin-Sherwood Area Pipeline Project
(SW 124th Avenue to north of Beef Bend Road)

Description: 5.3-mile water pipeline from 124th Ave. at SW Tualatin Sherwood Rd. along SW Roy Rogers Rd. to 0.5 miles north of SW Beef Bend Rd.

Status: Design Phase (Phase 1 Construction Start: 10/2019)

PLM_3.0 124th Avenue Partnership Project
(SW 124th Avenue Extension)

Description: 2.7-mile water pipeline from Grahams Ferry Rd. at Day Rd. to 124th Ave. at SW Tualatin Sherwood Rd.

Status: Complete

PLM_2.0 Kinsman Road Partnership Project
(Kinsman Road Extension)

Description: 0.5-mile water pipeline along Kinsman Rd. between Barber St. and Boeckman Rd.

Status: Complete

PLM_1.0 Wilsonville Area Pipeline Project
(WRWTP to Day Road)

Description: 3.0-mile water pipeline from WRWTP to the intersection of SW Garden Acres Rd. at Day Rd.

Status: Design Phase (Phase 1 Construction Start: 04/2019)