

## Our Future Water Supply

Tualatin Valley Water District (TVWD) and the City of Hillsboro, collectively referred to as the Partners, have identified the Willamette Water Supply System as the best option for future delivery of drinking water to their service areas in Washington County. Development of the Willamette Water Supply System is being led by the Partners. Other water providers in the region are also looking at their options for future participation. The mid-Willamette River at Wilsonville will be the new water supply source for the Willamette Water Supply System. Although current demands are met through other sources, the addition of a new source will provide improved water supply reliability and system resiliency. Developing an additional water supply through a partnership supports the region’s plans for responsible growth within the urban growth boundary.

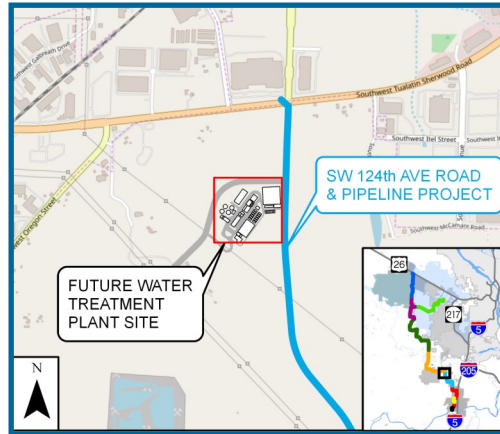
# Willamette Water Supply

## Our Reliable Water

Monthly Progress Report

Month End August 2018

### Water Treatment Plant Contractor Procurement

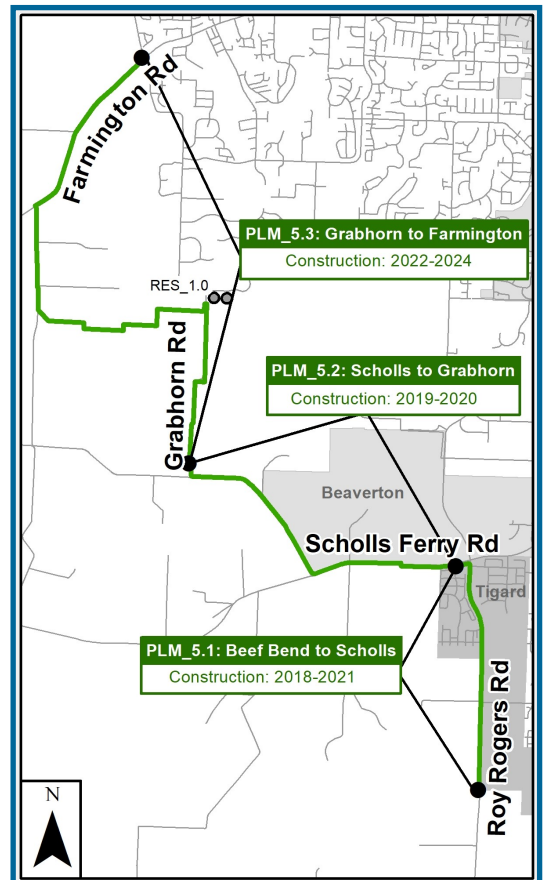


The Willamette Water Supply System (WWSS) Water Treatment Plant (WTP) is a new seismically resilient plant capable of initially producing 60 million gallons per day (mgd). The Willamette Water Supply

Program (WWSP) staff will be issuing a Request for Proposal (RFP) in September 2018 to procure a Construction Manager/General Contractor (CM/GC) for the WTP. Similar to the WWSS Raw Water Facilities (RWF) Project, the CM/GC contractor is engaged early in the design process to provide input into constructability, value engineering, safety planning, and scheduling. After design, but before construction, the WWSP and CM/GC will obtain bids for construction packages and negotiate a price to construct the project. Subcontracting and other opportunities will be announced on the WWSP website under Business Opportunities. WTP construction is expected to start in spring 2022 and conclude the end of 2025.

### Scholls Area Pipeline Project

The Scholls Area Pipeline Project includes 7.2 miles of 66-inch diameter pipeline that extends from Roy Rogers Road to Farmington Road, as shown in the figure to the right. This has been an active area for new development, including construction of the new high school. WWSP staff will soon break ground to begin installation of pipe for PLM\_5.1. It is a partnership project with Washington County to expand Roy Rogers Road. PLM\_5.2 construction is planned to begin soon after to stay ahead of planned developments and roadway expansions in the same area of Scholls Ferry Road and Tile Flat Road. PLM\_5.3 construction is anticipated once additional design and other related work is completed. Final construction of the entire Scholls Area Pipeline Project is projected for completion by the middle of 2024.



## Procurement & Business Opportunities

WWSP staff are preparing for several upcoming professional services and construction contractor procurements. Listed below are active procurements and upcoming events and procurements. Procurement opportunities are also published at <http://www.ourreliablewater.org/business-opportunities>.

### Active Procurements

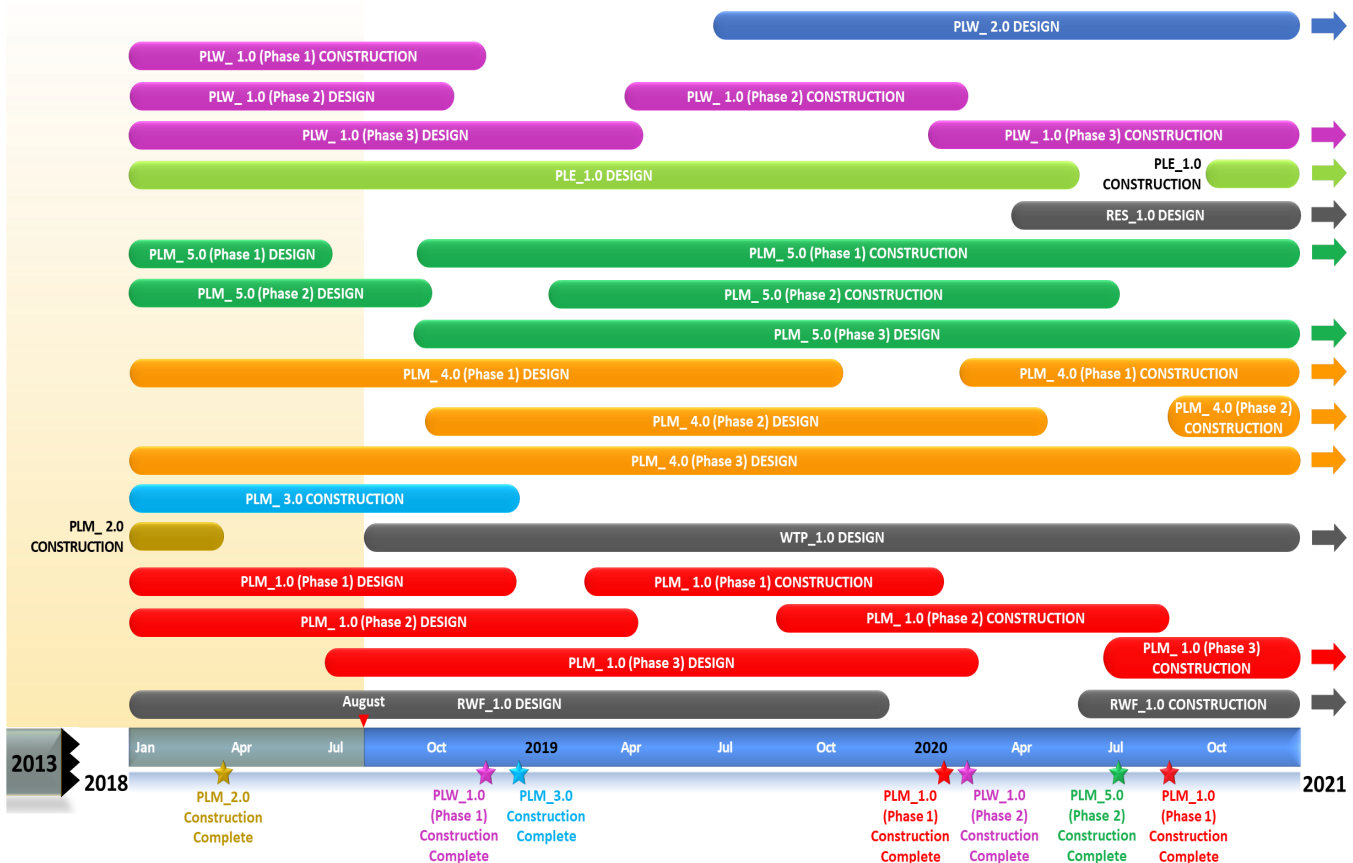
- Water Supply Integration Request for Proposal (RFP) (Released August 8)
- Scholls Area Pipeline Project (PLM\_5.2) Invitation to Bid (ITB) for pipeline material (Released week of August 27)

### Upcoming Events and Procurements

- Water Treatment Plant and Finished Water Pump Station (WTP\_1.0/FPS\_1.0) CM/GC RFP (Quarter 3, 2018)
- Scholls Area Pipeline Project (PLM\_5.2) Construction ITB (Quarter 4, 2018)
- Wilsonville Area Pipeline Project (PLM\_1.1) Construction ITB (Quarter 4, 2018)

## Schedule Summary

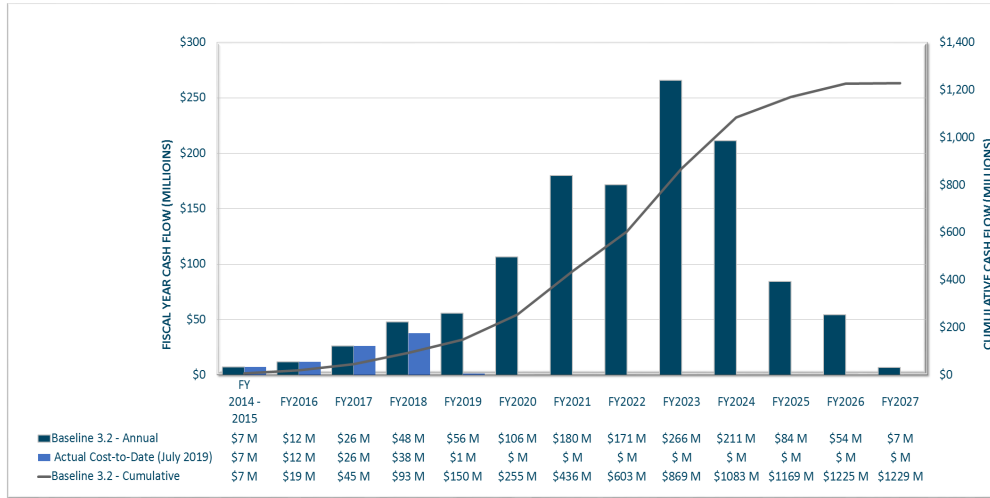
WWSP design and planning began in 2013; the Willamette Water Supply System is expected to be in service by July 2026. Below are the major milestones and activities forecasted from 2018 to 2021\*. The WWSP team is committed to on-time delivery. See page 4 for descriptions of the projects referenced below.



\*The actual order and duration of projects continues to be refined and is subject to change.

## Forecast Cost Summary

The graph below illustrates the projected WWSP cash flow by fiscal year (FY July 1 to June 30)\*. The cumulative cash flow establishes the budgeted \$1.2 billion, which accounts for actual and current projected costs, including projected escalation in the cost of labor, materials, and equipment required to build WWSP projects.



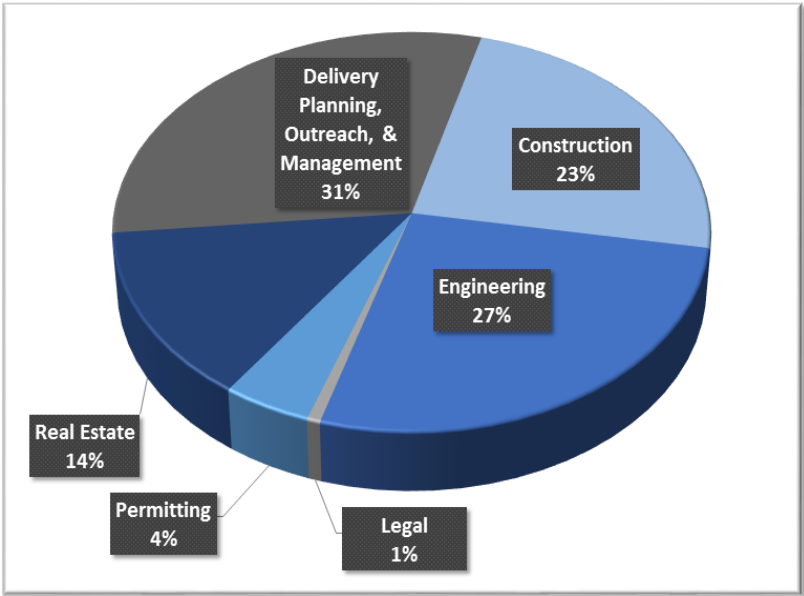
Costs for FY 2019 are \$1 million. Cumulative costs are projected to be \$139 million through the end of FY 2019.

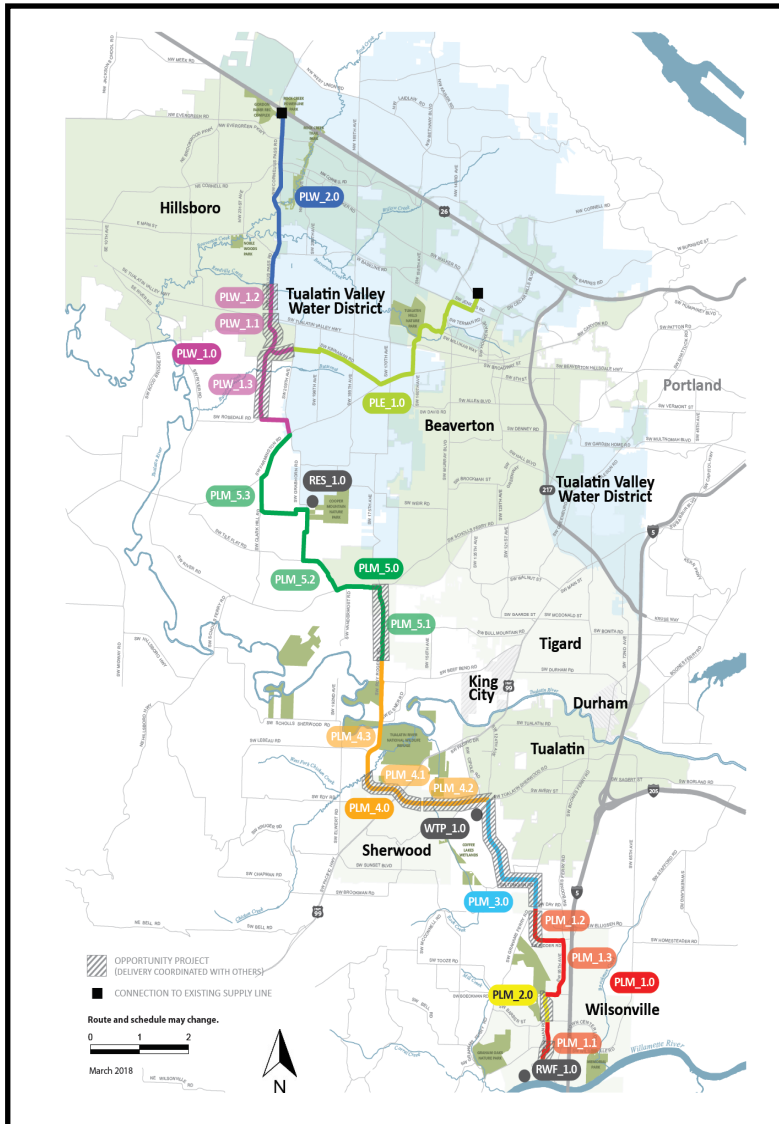
\*Data continues to be refined and is subject to change.

## Cumulative Cost Summary

WWSP cumulative costs are tracked and updated monthly. The chart below summarizes the distribution of cumulative costs through July 2018.

**Cumulative Water Supply Program costs to date are approximately \$84 million, with the majority spent on planning, engineering, construction, and real estate activities.**





WTP\_1.0

**Willamette Water Supply System Water Treatment Plant**  
(Water Treatment Plant (WTP))

FPS\_1.0

*Description:* 60-million gallon per day water treatment plant (WTP\_1.0), including a finished water pump station (FPS\_1.0) and a control system (DCS\_1.0) located near Sherwood.

DCS\_1.0

*Status:* Planning Phase (WTP/FPS Design Start: 08/2018)  
Planning Phase (DCS Design Start: 10/2018)

RWF\_1.0

**Raw Water Facilities Expansion**  
(Raw Water Facilities (RWF) Expansion)

*Description:* Expansion of the existing raw water pump station and intake infrastructure at the Willamette River WTP (WRWTP) in Wilsonville to 60 million gallons per day of initial capacity for the Willamette Water Supply System.

*Status:* Design Phase (Construction Start: 06/2020)

For more information about the WWSP, visit [www.ourreliablewater.org](http://www.ourreliablewater.org) or call 503.941.4570.

PLW\_2.0

**Cornelius Pass Pipeline Project**  
(Frances Road to Highway 26)

*Description:* 3.4-mile water pipeline along Cornelius Pass Rd. from Frances Rd. to Hwy 26; connects to existing supply lines for City of Hillsboro and TVWD.

*Status:* Planning Phase (Design Start: 07/2019)

PLW\_1.0

**South Hillsboro Area Pipeline Project**  
(Farmington Road to Frances Road)

*Description:* 3.9-mile water pipeline from SW Farmington Rd. at SW 209th Ave. to Cornelius Pass Rd. at Frances Rd.; also east on Kinnaman Rd. between Cornelius Pass Rd. and SW 209th Ave.

*Status:* Construction Phases (Phase 1 Construction Complete: 11/2018; Phase 2 Construction Start: 04/2019)

PLE\_1.0

**Beaverton Area Pipeline Project**  
(SW 209th Avenue to Walker Road)

*Description:* 5.5-mile water pipeline from SW 209th Ave. at Kinnaman Rd. to SW Cedar Hills Blvd.; connects to existing TVWD system.

*Status:* Design Phase (Construction Start: 10/2020)

RES\_1.0

**South Beaverton Area Water Storage Tanks** (Storage Tanks)

*Description:* Two 15-million gallon storage tanks located on Cooper Mountain.

*Status:* Planning Phase (Design Start: 04/2020)

PLM\_5.0

**Scholls Area Pipeline Project**  
(North of Beef Bend Road to Farmington Road)

*Description:* 7.2 mile water pipeline from SW Roy Rogers Rd. 0.5-mile north of SW Beef Bend Rd. to SW Farmington Rd. at SW 209th Ave.

*Status:* Design Phase (Phase 1 Construction Start: 09/2018; Phase 2 Construction Start: 01/2019)

PLM\_4.0

**Tualatin-Sherwood Area Pipeline Project**  
(SW 124th Avenue to north of Beef Bend Road)

*Description:* 5.3-mile water pipeline from 124th Ave. at SW Tualatin Sherwood Rd. along SW Roy Rogers Rd. to 0.5 miles north of SW Beef Bend Rd.

*Status:* Design Phase (Phase 1 Construction Start: 02/2020)

PLM\_3.0

**124th Avenue Partnership Project**  
(SW 124th Avenue Extension)

*Description:* 2.7-mile water pipeline from Grahams Ferry Rd. at Day Rd. to 124th Ave. at SW Tualatin Sherwood Rd.

*Status:* Construction Phase (Complete: 12/2018)

PLM\_2.0

**Kinsman Road Partnership Project**  
(Kinsman Road Extension)

*Description:* 0.5-mile water pipeline along Kinsman Rd. between Barber St. and Boeckman Rd.

*Status:* Construction Phase (Complete)

PLM\_1.0

**Wilsonville Area Pipeline Project**  
(WRWTP to Day Road)

*Description:* 3.0-mile water pipeline from WRWTP to the intersection of SW Garden Acres Rd. at Day Rd.

*Status:* Design Phase (Phase 1 Construction Start: 02/2019)