

Our Future Water Supply

Tualatin Valley Water District (TVWD) and the City of Hillsboro, collectively referred to as the Partners, have identified the Willamette Water Supply System as the best option for future delivery of drinking water to their service areas in Washington County. Development of the Willamette Water Supply System is being led by the Partners. Other water providers in the region are also looking at their options for future participation. The mid-Willamette River at Wilsonville will be the new water supply source for the Willamette Water Supply System. Although current demands are met through other sources, the addition of a new source will provide improved water supply reliability and system resiliency. Developing an additional water supply through a partnership supports the region's plans for responsible growth within the urban growth boundary.

Tualatin Valley Water District



Willamette Water Supply

Our Reliable Water

SEMI-ANNUAL, Q1/Q2 2018

BUSINESS UTILIZATION REPORT

Business Opportunities Continue to Grow

The Willamette Water Supply Program (WWSP) achieved several milestones the first half of 2018 that created opportunities for the local and regional business community. To date, more than 96 percent of WWSP expenditures have gone to local businesses, with some of the most significant opportunities yet to come. Below are a few of the 2018 milestones:



Water Treatment Plant Design

Awarded: CDM Smith Inc. (CDM) was awarded the Willamette Water Supply

System (WWSS) Water Treatment Plant (WTP) design services contract. The new plant will feature a multi-step water purification process scheduled to deliver water in 2026. CDM and WWSP staff will focus the 2nd half of 2018 on further advancing design to support permitting and construction.

WTP Construction Manager/General Contractor Selection Begins: The WWSP is seeking qualified prime contractors to provide design and construction services for the WWSS WTP using the Construction Manager/General Contractor (CM/GC) delivery method. Prime contractors with previous WTP construction experience and similar alternative delivery methods are encouraged to propose. Among some of the early tasks will be to collaborate with CDM and WWSP staff to develop a procurement plan for construction that outlines business opportunities for subcontractors and suppliers. The CM/GC selection process is expected to extend through the fall of 2018.



Kiewit

Raw Water Facilities CM/GC Awarded:

Kiewit Infrastructure West Co. (Kiewit) was awarded the CM/GC contract for the Raw Water Facilities (RWF) Project. Kiewit joins design consultant Black & Veatch to continue with design and prepare for construction that is anticipated to begin in 2020. Some early tasks for the team include identifying cost-savings to incorporate into the design plans and preparing a construction schedule. In addition, Kiewit is developing a procurement plan to outline business opportunities for subcontractors and vendors to complete their team.

Scholls Area Pipeline Project (Phase 1) Construction: The WWSP will select a contractor for upcoming pipeline work later this year. Construction will be in partnership with Washington County's Roy Rogers Rd. widening project from Scholls Ferry Rd. south past Bull Mountain Rd. Work is scheduled to begin in 2018 with pipeline installation beginning in 2019. The coordinated and combined construction of the pipeline and road widening will reduce project costs. Partnering opportunities also reduce community impacts by eliminating the need for multiple construction projects
(continued on pg.2).



Upcoming Events

Northwest Utility Contractors Association Presentation
Tuesday, September 18, 2018 from 5:30-7:30 pm
Monarch Hotel & Conference Center
12566 SE 93rd Ave., Clackamas, OR 97015

Business Profile



Beaverton's GRI Represents Key Role in Wilsonville Construction

Geotechnical Resources Inc. (GRI), a Beaverton-based company, is one of the 120 local businesses providing expertise to the WWSP. GRI is a sub-contractor to design consultant Black & Veatch providing geotechnical and seismic engineering to support evaluation of the existing and planned infrastructure for the RWF Project. GRI's work includes modeling potential earthquake effects on the intake facility to support a seismically resilient design.

The company is employee-owned and has maintained offices in Oregon since 1984.

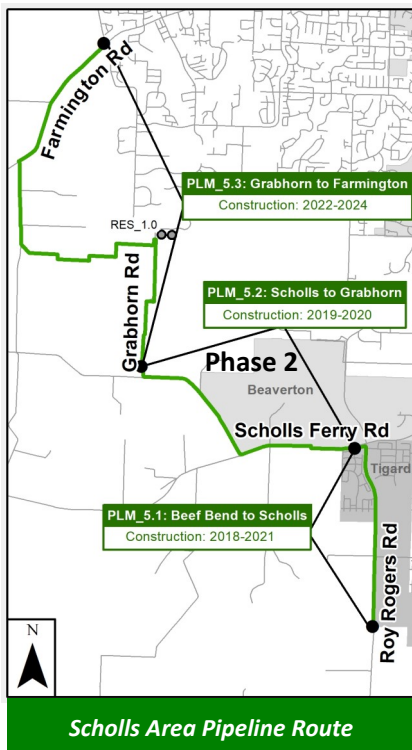
"The work on the WWSP Raw Water Facility has been an important project for us. We are proud to contribute the staff and technical resources to help provide a safe, reliable, seismically resilient water supply to the community following a significant earthquake."

— Scott Schlechter, Principal



Jason Bock, Senior Engineer with GRI, studies soil samples for the Arrowhead Creek pipeline crossing in Wilsonville.

continued from pg. 1...Business Opportunities Continue to Grow



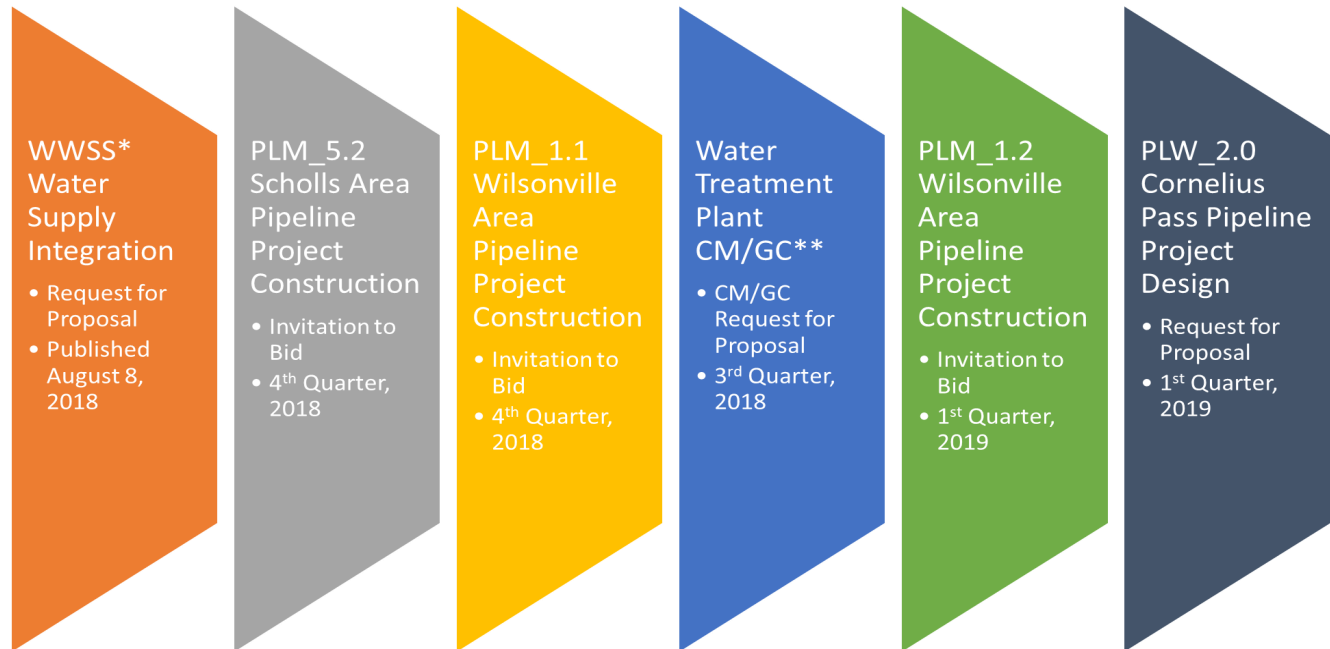
Scholls Area Pipeline Project (Phase 2) Construction: The WWSP anticipates advertising for construction services for the Scholls Area Pipeline Project (PLM_5.2) the end of 2018. A portion of construction was accelerated so pipeline installation can be completed before upcoming road-work and development in the Strobel Road area. Accelerating pipeline work will reduce costs and lessen public impacts, as construction crews will have less restoration to complete by installing infrastructure prior to road improvements planned by developers.

Wilsonville Area Pipeline Project (Phase 1) Construction: The WWSP anticipates advertising for construction services for the Wilsonville Area Pipeline Project (Phase 1) at the end of 2018. The project begins at Arrowhead Creek near Industrial Drive and continues to Kinsman Road, where pipeline installation continues north of Wilsonville Road. The construction schedule was strategically developed so work within Arrowhead Creek is accomplished during the summer of 2019, an environmentally beneficial time when creek water levels are low. In addition to pipeline work, the solicitation is anticipated to include construction of selected street and sidewalk improvements.

For more information about upcoming procurements and business opportunities, visit the Business Opportunities page at www.ourreliablewater.org.

2018-2019 Procurement Schedule

The following is a list of ongoing and anticipated 2018-2019 procurement opportunities. This includes opportunities for procurement of design, construction, and support services.



*WWSS = Willamette Water Supply System

**CM/GC – Construction Manager/General Contractor

Procurements subject to change

Interested in Doing Business with the WWSP?

Businesses can get involved by:

- 1) Submitting a response to an advertised Request for Proposal (RFP) or Invitation to Bid (ITB) as a qualified prime contractor.
- 2) Becoming a subcontractor or vendor to an already awarded prime contractor.
- 3) Getting involved with procurements of goods or services for one of the opportunity projects led by a partner agency participating with the WWSP.

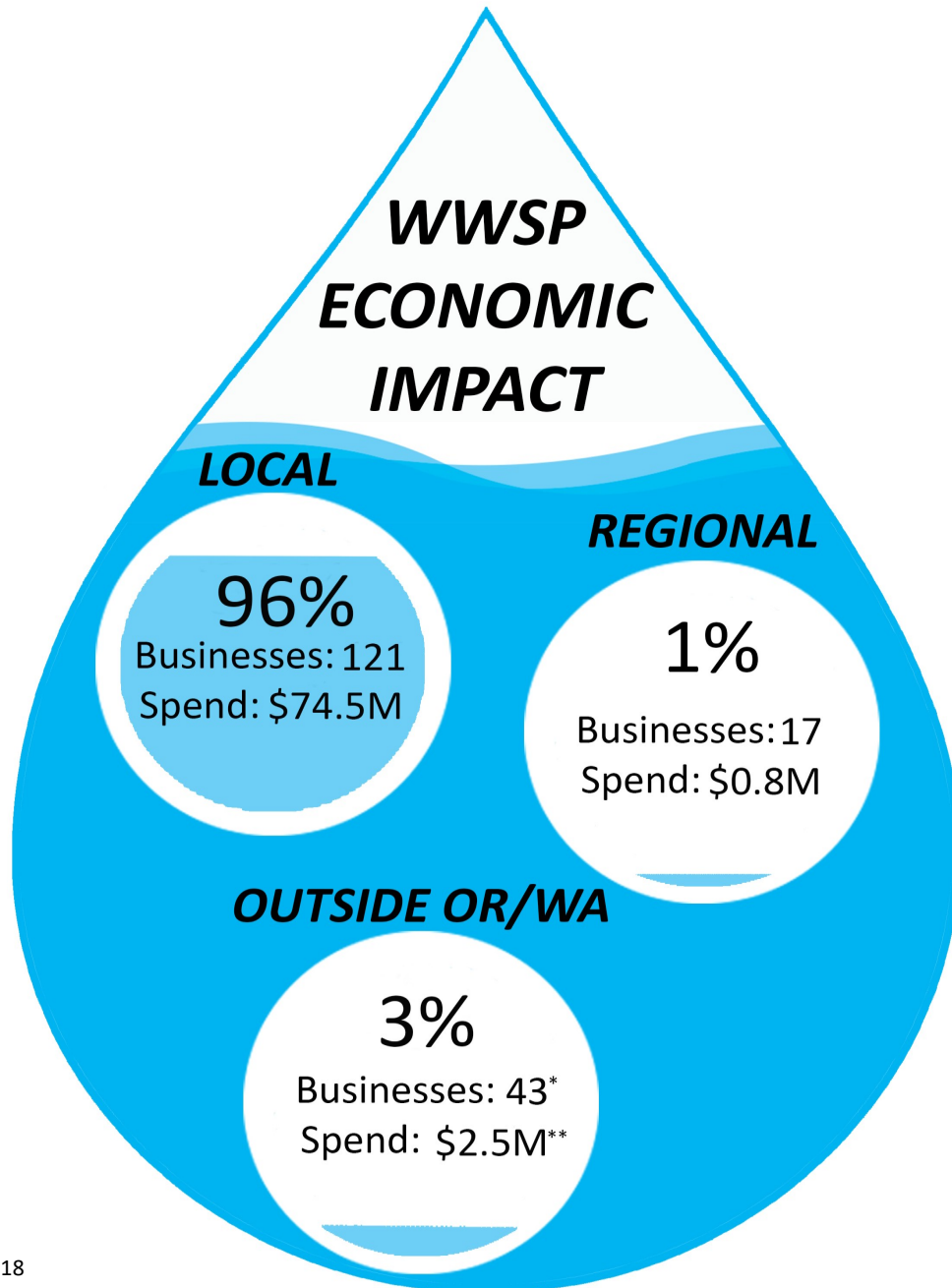
RFP and ITB opportunities are advertised in the *Daily Journal of Commerce Oregon* and listed on the Business Opportunities page at <http://www.ourreliablewater.org/business-opportunities/>

Goods and Services

Needs for each work package vary, and each contractor selects its own subcontractors to support construction. Some of the goods and services that will be needed include, but are not limited to: traffic control, equipment rentals, erosion/sediment control, concrete, welding, fuels and oils, equipment maintenance services, portable toilets, truck drivers, signage, pavement/road construction, fencing, and aggregate supplies.

WWSP Economic Contribution Summary

The WWSP is positively contributing to the Oregon and Washington regional economy with nearly \$80 million spent to date. Approximately 121 local businesses (located in counties within 50 miles of the WWSP project site) and 17 regional businesses (located outside the local area but within Oregon or Washington) have participated in the Program. The 43 other businesses that are located outside Oregon and Washington are also contributing a positive effect on the local economy, as many of their employees live and work in the local area and generate local benefits through the purchase of goods, services, and other activities.



Data through Q2 2018

*Outside OR/WA businesses adjusted from Q1 2018 to reflect one business reclassified as regional based on additional information.

**Outside OR/WA funds adjusted from Jan. 2018 report to reflect one business reclassified as local based on additional information.