

Our Future Water Supply

Tualatin Valley Water District (TVWD) and the City of Hillsboro, collectively referred to as the Partners, have identified the Willamette Water Supply System as the best option for future delivery of drinking water to their service areas in Washington County. Development of the Willamette Water Supply System is being led by the Partners. Other water providers in the region are also looking at their options for future participation. The mid-Willamette River at Wilsonville will be the new water supply source for the Willamette Water Supply System. Although current demands are met through other sources, the addition of a new source will provide improved water supply reliability and system resiliency. Developing an additional water supply through a partnership supports the region's plans for responsible growth within the urban growth boundary.

Willamette Water Supply

Monthly Progress Report

Our Reliable Water

Month End June 2018

Water Treatment Plant Design

Staff managing development of the Willamette Water Supply System (WWSS) water treatment plant (WTP), a new seismically resilient plant capable of initially producing 60 million gallons per day (mgd), are in procurement to hire a design consultant. The Conceptual Design Report, developed in 2017, identifies the building and structures conceptual layout criteria. Once Program staff select a design consultant (anticipated August 2018), they will work with the Partners and other stakeholders to develop the preliminary and detailed design of the WTP based on the Conceptual Design Report. Design is anticipated to begin August 2018 and conclude by early 2022.

Preliminary design includes:

- Finalize design criteria

- Develop resiliency, reliability, redundancy, and recovery concepts
- Coordinate WTP water quality goals with a distribution system water quality integrator
- Conduct preliminary safety reviews and operation and maintenance planning
- Integrate with a Construction Manager/General Contractor (CM/GC) to reflect cost-effective construction methods in the design



Reservoir Project Open House

Community Outreach Highlights

The Willamette Water Supply Program's (WWSP's) Communications Team is busy staffing summer community events. The team has shared information at numerous farmers' markets, open houses, public meetings, and community events as part of the Program's ongoing efforts to educate the community. Upcoming summer events include:

- [South Hillsboro](#) open house (July 10)
- [Kinton Grange](#) presentation (July 10)
- [Celebrate Hillsboro](#) information booth (July 21)
- [Wilsonville Brew Fest](#) information booth (August 11)
- [Wilsonville Community Block Party](#) information booth (August 22)

For additional event information, visit www.ourreliablewater.org/meeting-events/. The Program's communications to date include the following:

- 30,000 direct mail updates
- 500 individual contacts with property owners
- 15,000 individual hits to the WWSP website
- 20 open house events
- 12 educational videos
- 50 community meeting presentations
- Publication of numerous fact sheets, newsletters, and other educational publications

Procurement & Business Opportunities

WWSP staff are preparing for several upcoming professional services and construction contractor procurements. Listed below are active procurements and upcoming events and procurements. Procurement opportunities are also published at <http://www.ourreliablewater.org/business-opportunities>.

Active Procurements

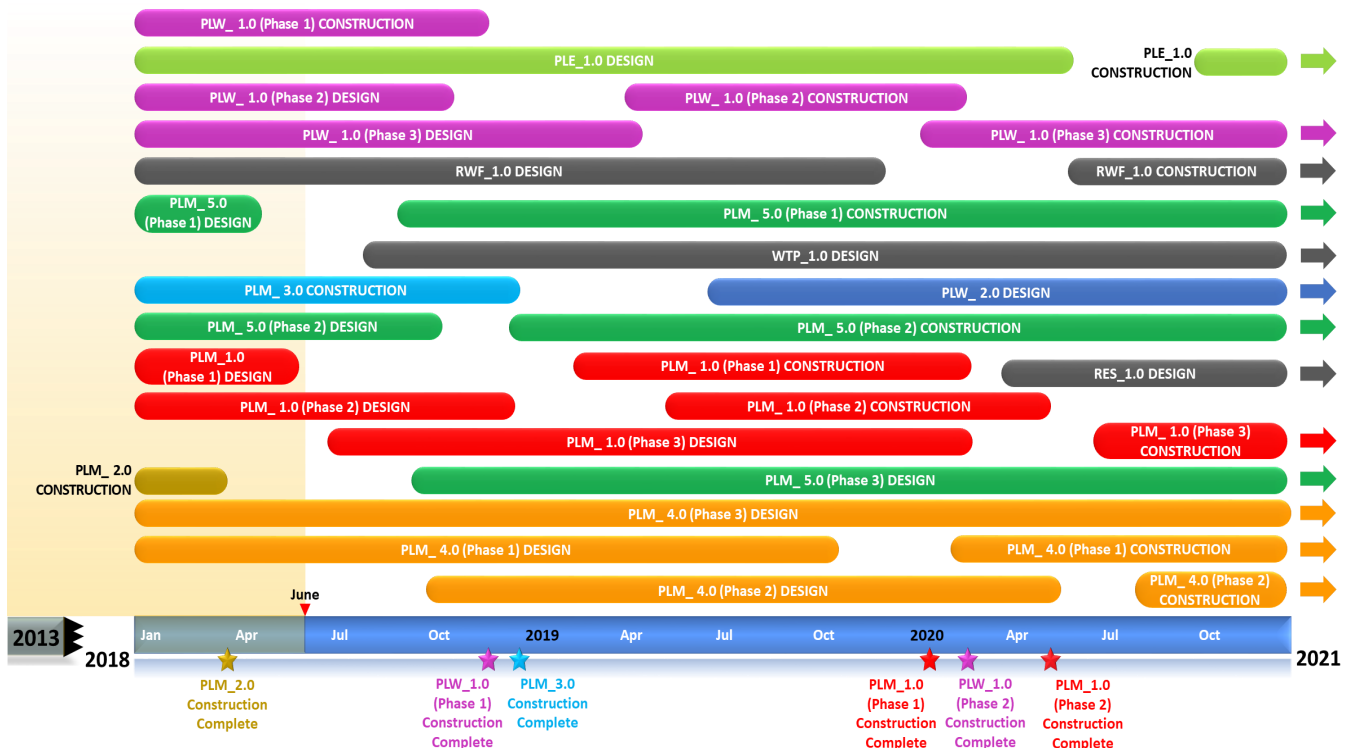
- Distributed Controls System (DCS_1.0) Design Request for Proposal (RFP) (Released June 11)

Upcoming Events and Procurements

- Scholls Area Pipeline Project (PLM_5.1) Construction Invitation to Bid (ITB) by Washington County (Quarter 3, 2018)
- Distribution System Water Quality RFP (Quarter 3, 2018)
- Water Treatment Plant and Finished Water Pump Station (WTP_1.0/FPS_1.0) CM/GC RFP (Quarter 3, 2018)
- Scholls Area Pipeline Project (PLM_5.2) Construction ITB (Quarter 4, 2018)
- Wilsonville Area Pipeline Project (PLM_1.1) Construction ITB (Quarter 4, 2018)

Schedule Summary

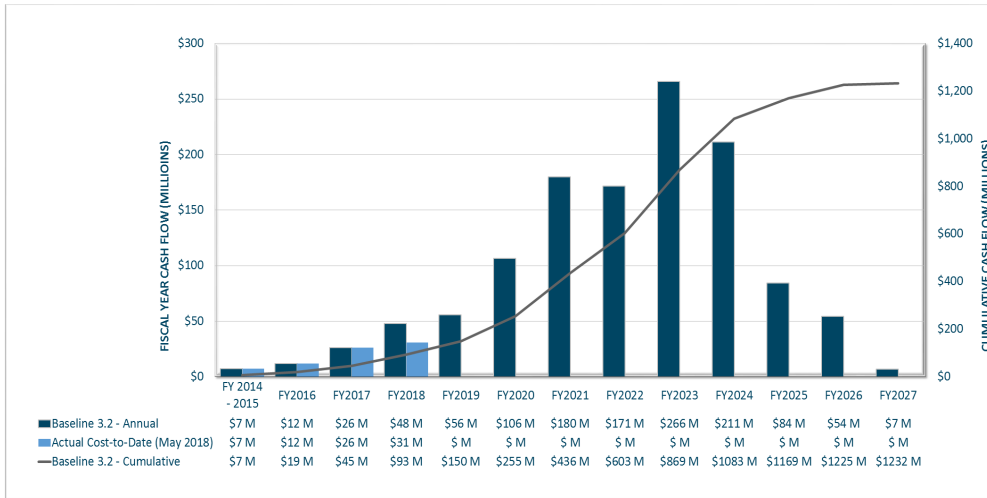
WWSP design and planning began in 2013; the Willamette Water Supply System is expected to be in service by July 2026. Below are the major milestones and activities forecasted from 2018 to 2021*. The WWSP team is committed to on-time delivery. See page 4 for descriptions of the projects referenced below.



*The actual order and duration of projects continues to be refined and is subject to change.

Forecast Cost Summary

The graph below illustrates the projected WWSP cash flow by fiscal year (FY July 1 to June 30)*. The cumulative cash flow establishes the budgeted \$1.2 billion, which accounts for actual and current projected costs, including projected escalation in the cost of labor, materials, and equipment required to build WWSP projects.



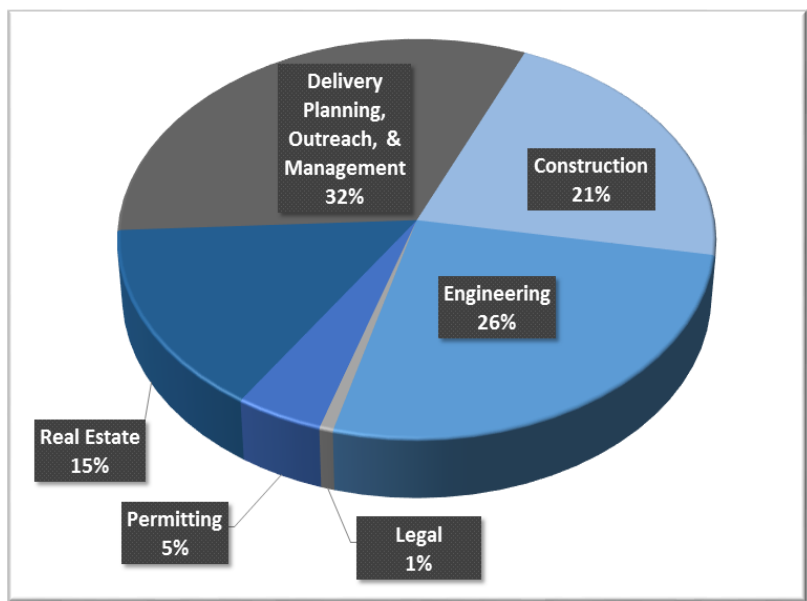
Costs for FY 2018 are \$31 million. Cumulative costs are projected to be \$93 million through the end of FY 2018.

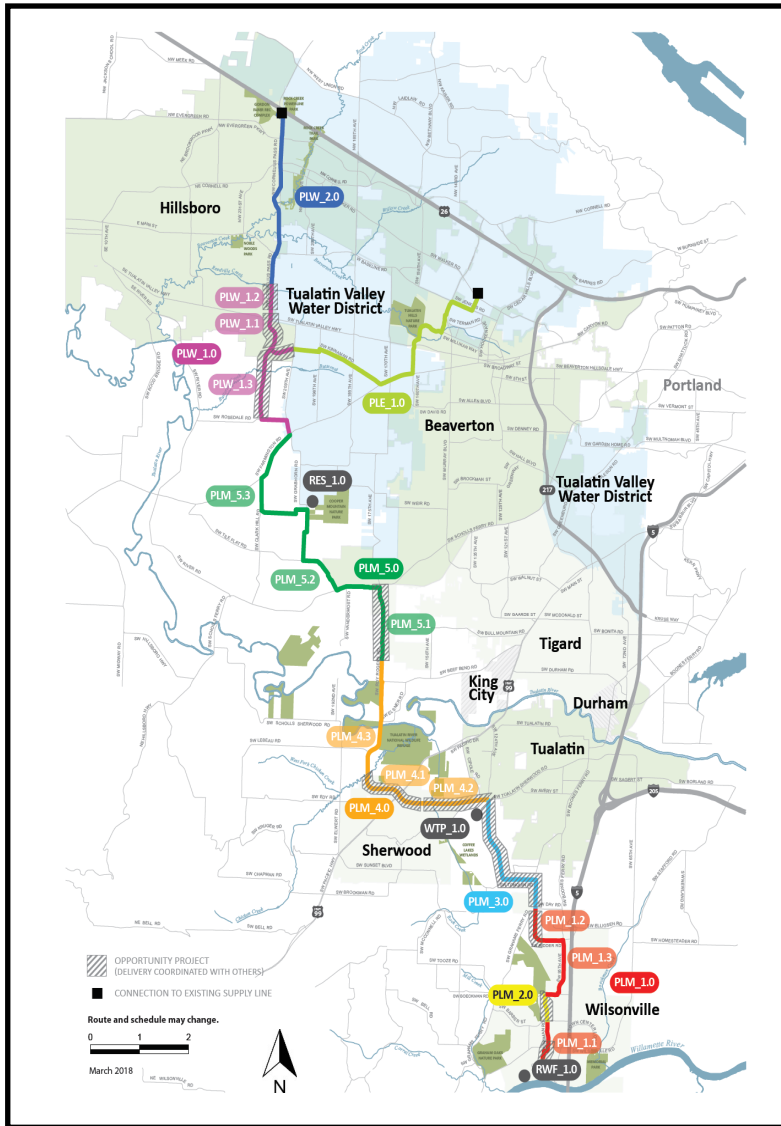
*Data continues to be refined and is subject to change.

Cumulative Cost Summary

WWSP cumulative costs are tracked and updated monthly. The chart below summarizes the distribution of cumulative costs through May 2018.

Cumulative Water Supply Program costs to date are approximately \$76 million, with the majority spent on planning, engineering, construction, and real estate activities.





PLW_2.0 Cornelius Pass Pipeline Project
(Frances Road to Highway 26)

Description: 3.4-mile water pipeline along Cornelius Pass Rd. from Frances Rd. to Hwy 26; connects to existing supply lines for City of Hillsboro and TVWD.

Status: Planning Phase (Design Start: 07/2019)

PLW_1.0 South Hillsboro Area Pipeline Project
(Farmington Road to Frances Road)

Description: 3.9-mile water pipeline from SW Farmington Rd. at SW 209th Ave. to Cornelius Pass Rd. at Frances Rd.; also east on Kinnaman Rd. between Cornelius Pass Rd. and SW 209th Ave.

Status: Construction Phases (Phase 1 Construction Complete: 11/2018; Phase 2 Construction Start: 04/2019)

PLE_1.0 Beaverton Area Pipeline Project
(SW 209th Avenue to Walker Road)

Description: 5.5-mile water pipeline from SW 209th Ave. at Kinnaman Rd. to SW Cedar Hills Blvd.; connects to existing TVWD system.

Status: Design Phase (Construction Start: 10/2020)

RES_1.0 South Beaverton Area Water Storage Tanks (Storage Tanks)

Description: Two 15-million gallon storage tanks located on Cooper Mountain.

Status: Planning Phase (Design Start: 04/2020)

PLM_5.0 Scholls Area Pipeline Project
(North of Beef Bend Road to Farmington Road)

Description: 7.2 mile water pipeline from SW Roy Rogers Rd. 0.5-mile north of SW Beef Bend Rd. to SW Farmington Rd. at SW 209th Ave.

Status: Design Phase (Phase 1 Construction Start: 09/2018)

PLM_4.0 Tualatin-Sherwood Area Pipeline Project
(SW 124th Avenue to north of Beef Bend Road)

Description: 5.3-mile water pipeline from 124th Ave. at SW Tualatin Sherwood Rd. along SW Roy Rogers Rd. to 0.5 miles north of SW Beef Bend Rd.

Status: Design Phase (Phase 1 Construction Start: 02/2020)

PLM_3.0 124th Avenue Partnership Project
(SW 124th Avenue Extension)

Description: 2.7-mile water pipeline from Grahams Ferry Rd. at Day Rd. to 124th Ave. at SW Tualatin Sherwood Rd.

Status: Construction Phase (Complete: 12/2018)

PLM_2.0 Kinsman Road Partnership Project
(Kinsman Road Extension)

Description: 0.5-mile water pipeline along Kinsman Rd. between Barber St. and Boeckman Rd.

Status: Construction Phase (Complete)

PLM_1.0 Wilsonville Area Pipeline Project
(WRWTP to Day Road)

Description: 3.0-mile water pipeline from WRWTP to the intersection of SW Garden Acres Rd. at Day Rd.

Status: Design Phase (Phase 1 Construction Start: 02/2019)

WTP_1.0 Willamette Water Supply System Water Treatment Plant
(Water Treatment Plant (WTP))

FPS_1.0 *Description:* 60-million gallon per day water treatment plant (WTP_1.0), including a finished water pump station (FPS_1.0) and a control system (DCS_1.0) located near Sherwood.

DCS_1.0 *Status:* Planning Phase (WTP/FPS Design Start: 08/2018)
Planning Phase (DCS Design Start: 10/2018)

RWF_1.0 Raw Water Facilities Expansion
(Raw Water Facilities (RWF) Expansion)

Description: Expansion of the existing raw water pump station and intake infrastructure at the Willamette River WTP (WRWTP) in Wilsonville to 60 million gallons per day of initial capacity for the Willamette Water Supply System.

Status: Design Phase (Construction Start: 06/2020)

For more information about the WWSP, visit www.ourreliablewater.org or call 503.941.4570.