

Our Future Water Supply

Tualatin Valley Water District (TVWD) and the City of Hillsboro, collectively referred to as the Partners, have identified the Willamette Water Supply System as the best option for future delivery of drinking water to their service areas in Washington County. Development of the Willamette Water Supply System is being led by the Partners. Other water providers in the region are also looking at their options for future participation. The mid-Willamette River at Wilsonville will be the new water supply source for the Willamette Water Supply System. Although current demands are met through other sources, the addition of a new source will provide improved water supply reliability and system resiliency. Developing an additional water supply through a partnership supports the region's plans for responsible growth within the urban growth boundary.

Willamette Water Supply

Monthly Progress Report

Our Reliable Water

Month End April 2018

Raw Water Facilities Project Delivery Procurement

Willamette Water Supply Program (WWSP) staff are currently in the process of selecting a Construction Manager/General Contractor (CM/GC) for the Raw Water Facilities (RWF) project; notice to proceed is anticipated in June 2018 for pre-construction services. The RWF project will modify the existing raw water pump station and intake infrastructure at the Willamette River Water Treatment Plant (WRWTP) in Wilsonville. Black & Veatch was selected as the design consultant in October 2017 and is progressing toward completion of pre-design documents. Through the CM/GC project delivery method, the construction manager is selected early in

the design process to provide constructability, value engineering, safety mitigation, and scheduling services. After design but before construction, the WWSP and CM/GC obtain bids for construction packages and negotiate a fixed price to construct the project. RWF construction is expected to start in summer 2020 and conclude by the end of 2024. The scope includes increasing the intake screens capacity, replacing the existing raw water pumps with larger pumps, installing additional electrical components, and seismic improvements for infrastructure stabilization.



Existing Raw Water Pump Station

Steel Tariff Potential Effects on WWSP Cost

On March 8, 2018, the U.S. President signed an order to enact a tariff on imported steel (25 percent). Pipe fabricated for the WWSP so far has used domestic steel, which would not be directly affected by the tariff. However, the tariff could effect construction costs of WWSS pipelines and facilities, including the water treatment plant, finished water pump station, RWF, and reservoirs. WWSP staff have evaluated the potential tariff impact and identified a potential materials cost increase of approximately \$4.7 million (in 2018 dollars). Because the overall

WWSP budget includes some contingency budget for uncertainties, the steel tariff is not anticipated to impact the overall WWSP budget based on current market conditions. Due to tariff exemptions, WWSP design requirements, and other market conditions, the actual impact is unknown. It is also not known how exporter responses to the steel and other tariffs may affect the costs for other WWSP-required materials imported to the U.S. WWSP staff will continue to monitor market conditions and potential impacts.

Procurement & Business Opportunities

WWSP staff are preparing for several upcoming professional services and construction contractor procurements. Listed below are active procurements and upcoming events and procurements. Procurement opportunities are also published at <http://www.ourreliablewater.org/business-opportunities>.

Active Procurements

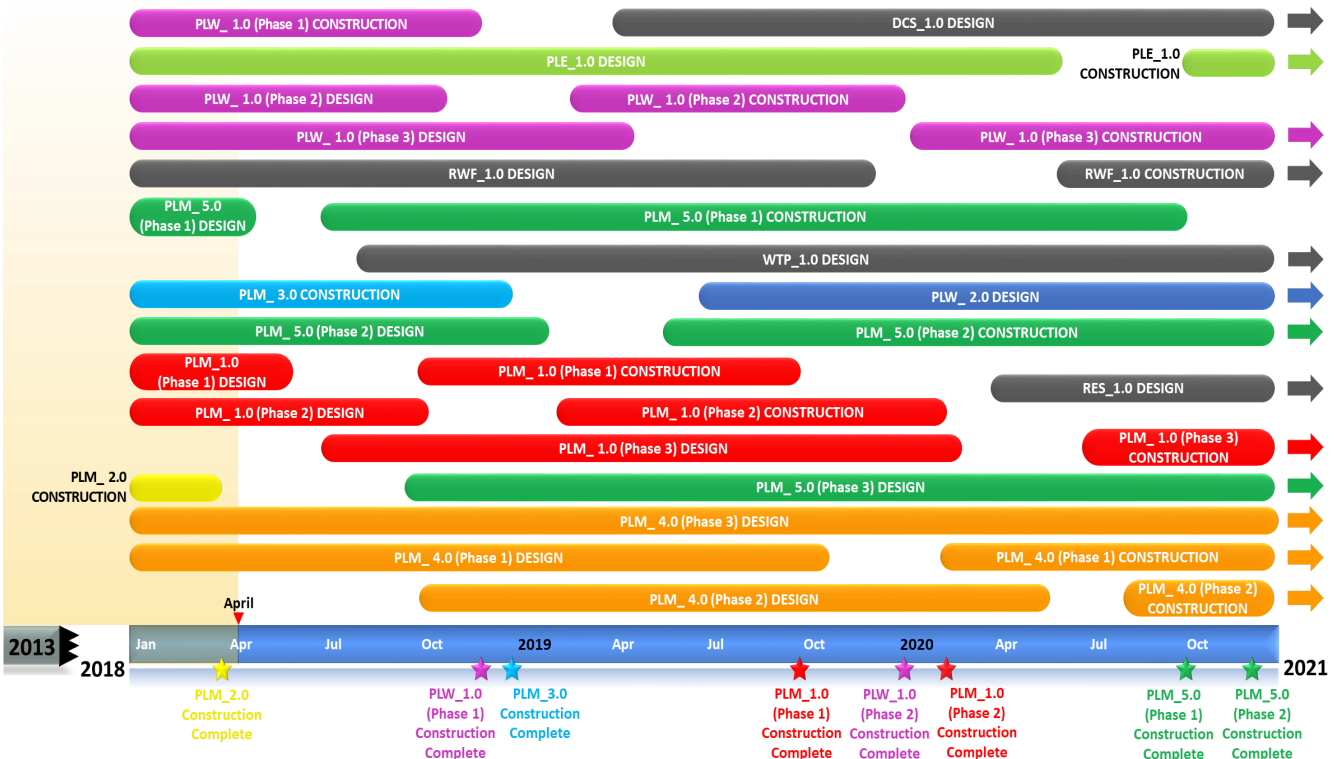
- N/A

Upcoming Events and Procurements

- Scholls Area Pipeline Project (PLM_5.1) Construction Invitation to Bid (ITB) by Washington County (Quarter 2, 2018)
- Distributed Controls System (DCS_1.0) Design Request for Proposal (RFP) (Quarter 2, 2018)
- Distribution System Water Quality RFP (Quarter 2, 2018)
- Wilsonville Area Pipeline Project (PLM_1.1) Construction ITB (Quarter 3, 2018)
- Water Treatment Plant and Finished Water Pump Station (WTP_1.0/FPS_1.0) CM/GC Request for Proposal (Quarter 4, 2018)

Schedule Summary

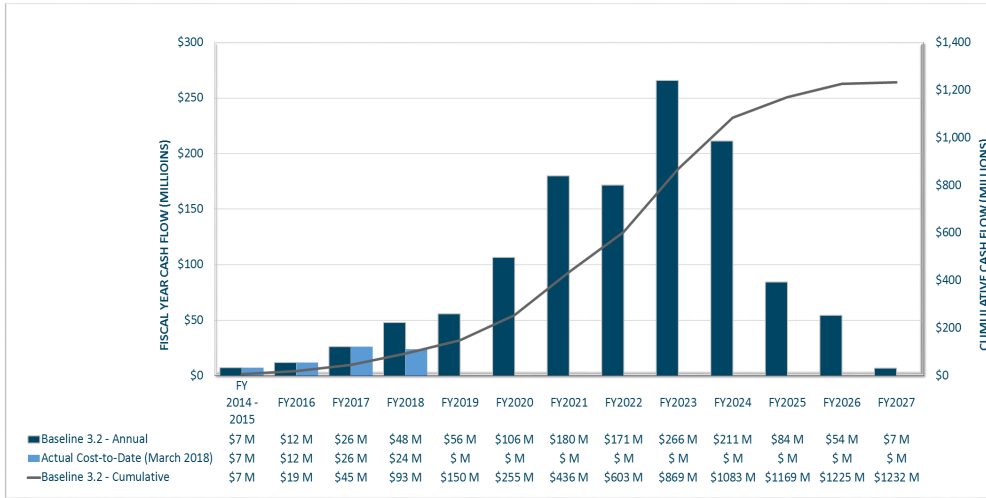
WWSP design and planning began in 2013; the Willamette Water Supply System is expected to be in service by July 2026. Below are the major milestones and activities forecasted from 2018 to 2021*. The WWSP team is committed to on-time delivery. See page 4 for descriptions of the projects referenced below.



*The actual order and duration of projects continues to be refined and is subject to change.

Forecast Cost Summary

The graph below illustrates the projected WWSP cash flow by fiscal year (FY July 1 to June 30)*. The cumulative cash flow establishes the budgeted \$1.2 billion, which accounts for actual and current projected costs, including projected escalation in the cost of labor, materials, and equipment required to build the projects that comprise the WWSP.



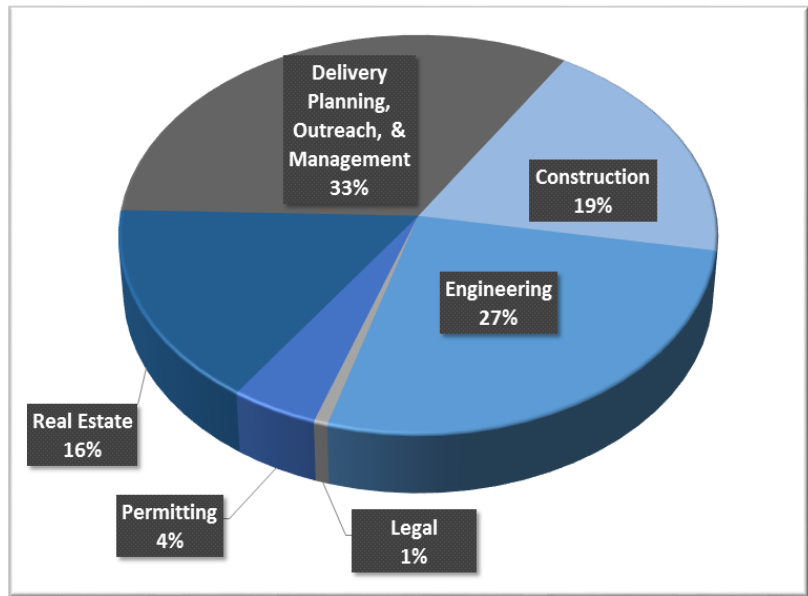
Costs for FY 2018 are \$24 million. Cumulative costs are projected to be \$93 million through the end of FY 2018.

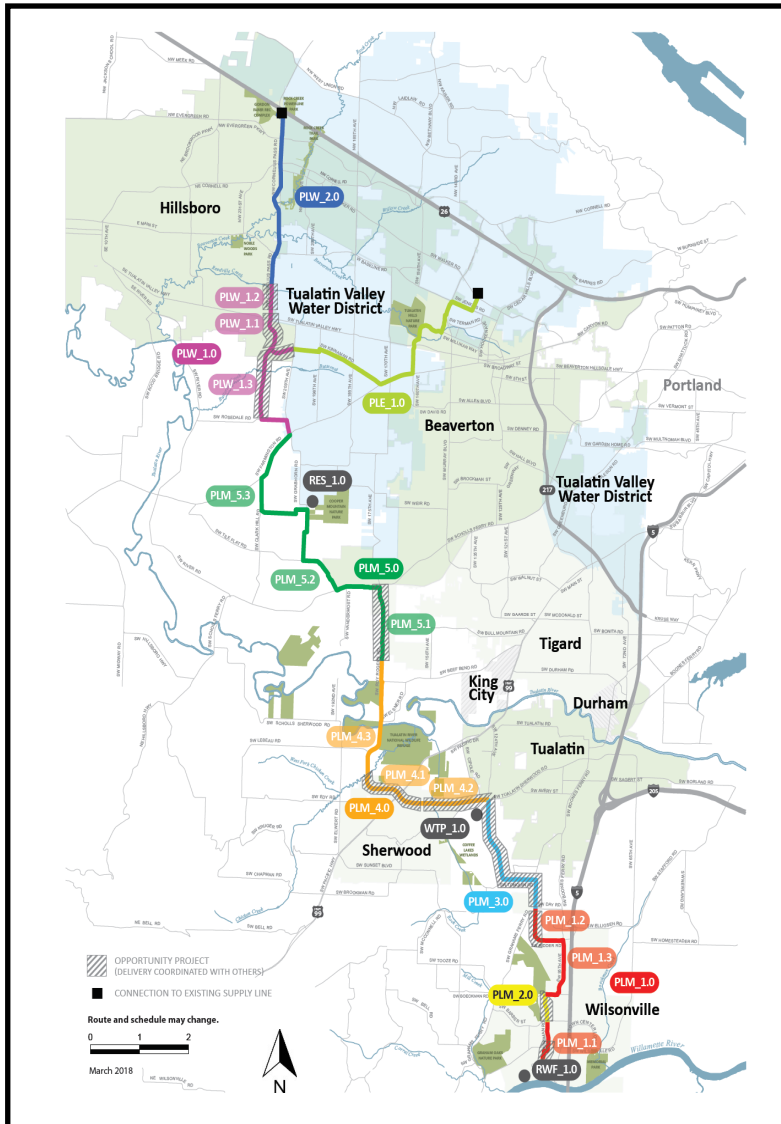
*Data continues to be refined and is subject to change.

Cumulative Cost Summary

WWSP cumulative costs are tracked and updated monthly. The chart below summarizes the distribution of cumulative costs through March 2018.

Cumulative Water Supply Program costs to date are approximately \$69 million, with the majority spent on planning, engineering, construction, and real estate activities.





PLW_2.0 Cornelius Pass Pipeline Project
(Frances Road to Highway 26)

Description: 3.4-mile water pipeline along Cornelius Pass Rd. from Frances Rd. to Hwy 26; connects to existing supply lines for City of Hillsboro and TVWD.

Status: Planning Phase (Design Start: 07/2019)

PLW_1.0 South Hillsboro Area Pipeline Project
(Farmington Road to Frances Road)

Description: 3.9-mile water pipeline from SW Farmington Rd. at SW 209th Ave. to Cornelius Pass Rd. at Frances Rd.; also east on Kinnaman Rd. between Cornelius Pass Rd. and SW 209th Ave.

Status: Construction Phases (Phase 1 Construction Complete: 11/2018; Phase 2 Construction Start: 02/2019)

PLE_1.0 Beaverton Area Pipeline Project
(SW 209th Avenue to Walker Road)

Description: 5.5-mile water pipeline from SW 209th Ave. at Kinnaman Rd. to SW Cedar Hills Blvd.; connects to existing TVWD system.

Status: Design Phase (Construction Start: 10/2020)

RES_1.0 South Beaverton Area Water Storage Tanks (Storage Tanks)

Description: Two 15-million gallon storage tanks located on Cooper Mountain.

Status: Planning Phase (Design Start: 04/2020)

PLM_5.0 Scholls Area Pipeline Project
(North of Beef Bend Road to Farmington Road)

Description: 7.2 mile water pipeline from SW Roy Rogers Rd. 0.5-mile north of SW Beef Bend Rd. to SW Farmington Rd. at SW 209th Ave.

Status: Design Phase (Phase 1 Construction Start: 07/2018)

PLM_4.0 Tualatin-Sherwood Area Pipeline Project
(SW 124th Avenue to north of Beef Bend Road)

Description: 5.3-mile water pipeline from 124th Ave. at SW Tualatin Sherwood Rd. along SW Roy Rogers Rd. to 0.5 miles north of SW Beef Bend Rd.

Status: Design Phase (Phase 1 Construction Start: 02/2020)

PLM_3.0 124th Avenue Partnership Project
(SW 124th Avenue Extension)

Description: 2.7-mile water pipeline from Grahams Ferry Rd. at Day Rd. to 124th Ave. at SW Tualatin Sherwood Rd.

Status: Construction Phase (Complete: 12/2018)

PLM_2.0 Kinsman Road Partnership Project
(Kinsman Road Extension)

Description: 0.5-mile water pipeline along Kinsman Rd. between Barber St. and Boeckman Rd.

Status: Construction Phase (Complete)

PLM_1.0 Wilsonville Area Pipeline Project
(WRWTP to Day Road)

Description: 3.0-mile water pipeline from WRWTP to the intersection of SW Garden Acres Rd. at Day Rd.

Status: Design Phase (Phase 1 Construction Start: 10/2018)

WTP_1.0 Willamette Water Supply System Water Treatment Plant
(Water Treatment Plant (WTP))

FPS_1.0 *Description:* 60-million gallon per day water treatment plant (WTP_1.0), including a finished water pump station (FPS_1.0) and a control system (DCS_1.0) located near Sherwood.

DCS_1.0 *Status:* Planning Phase (WTP/FPS Design Start: 08/2018)
Planning Phase (DCS Design Start: 04/2019)

RWF_1.0 Raw Water Facilities Expansion
(Raw Water Facilities (RWF) Expansion)

Description: Expansion of the existing raw water pump station and intake infrastructure at the Willamette River WTP (WRWTP) in Wilsonville to 60 million gallons per day of initial capacity for the Willamette Water Supply System.

Status: Design Phase (Construction Start: 06/2020)

For more information about the WWSP, visit www.ourreliablewater.org or call 503.941.4570.