

Our Future Water Supply

Tualatin Valley Water District (TVWD) and the City of Hillsboro, collectively referred to as the Partners, have identified the Willamette Water Supply System as the best option for future delivery of drinking water to their service areas in Washington County. Development of the Willamette Water Supply System is being led by the Partners.

Other water providers in the region are also looking at their options for future participation. The mid-Willamette River at Wilsonville will be the new water supply source for the Willamette Water Supply System. Although current demands are met through other sources, the addition of a new source will provide improved water supply reliability and system resiliency. Developing an additional water supply through a partnership supports the region’s plans for responsible growth within the urban growth boundary.

Willamette Water Supply

Our Reliable Water

Monthly Progress Report

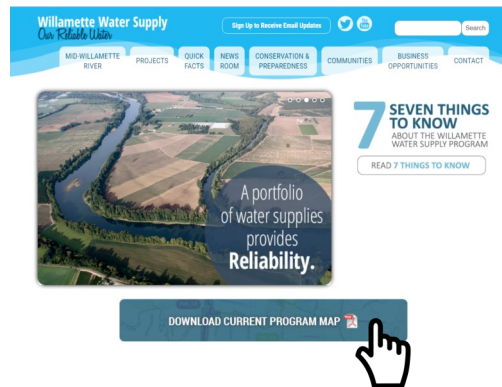
Month End March 2018

New Map and Schedule Updates Published

The Willamette Water Supply Program (WWSP) recently published updates to the map and schedule. Program staff annually refine the overall delivery approach, including modifying the sequence of how projects are constructed, adding different phases, or adjusting alignments and facility locations. Most of the changes are driven by updated information from the design teams as plans progress for each component of the Program. Some of the 2018 annual updates include:

- Expanding the South Hillsboro Area Pipeline Project (Phase 1) boundary to include the new construction limit that extends to Kinnaman Rd.
- Adjusting the South Beaverton Area Water Storage Tanks and Raw Water Facilities substantial completion dates from 2025 to 2024.
- Modifying the South Hillsboro Area Pipeline Project (Phase 2) construction timing from 2018-2019 to 2019-2020.
- Adjusting the Scholls Area Pipeline Project (Phase 3) construction timing from 2020-2022 to 2022-2024.

The map and schedule are subject to change and are periodically updated to reflect the latest design and construction information. The updated schedule and map are available at: www.ourreliablewater.org.



Local Businesses Benefit from WWSP

WWSP announced that more than 100 local businesses have provided goods and services for the WWSP, contributing about 95 percent of expenditures—or approximately \$58.8 million—to the local economy. The Semi-Annual Business Utilization Report lists statistics collected from contractors and direct spend by the Program through December 2017. The statistics and a directory of businesses involved are updated throughout the year and published at:

www.ourreliablewater.org/business-utilization-info/.

In addition to the spend information, the report also lists the upcoming procurement schedule, business outreach events, and business profiles.



Procurement & Business Opportunities

WWSP staff are preparing for several upcoming professional services and construction contractor procurements. Listed below are active procurements and upcoming events and procurements. Procurement opportunities are also published at <http://www.ourreliablewater.org/business-opportunities>.

Active Procurements

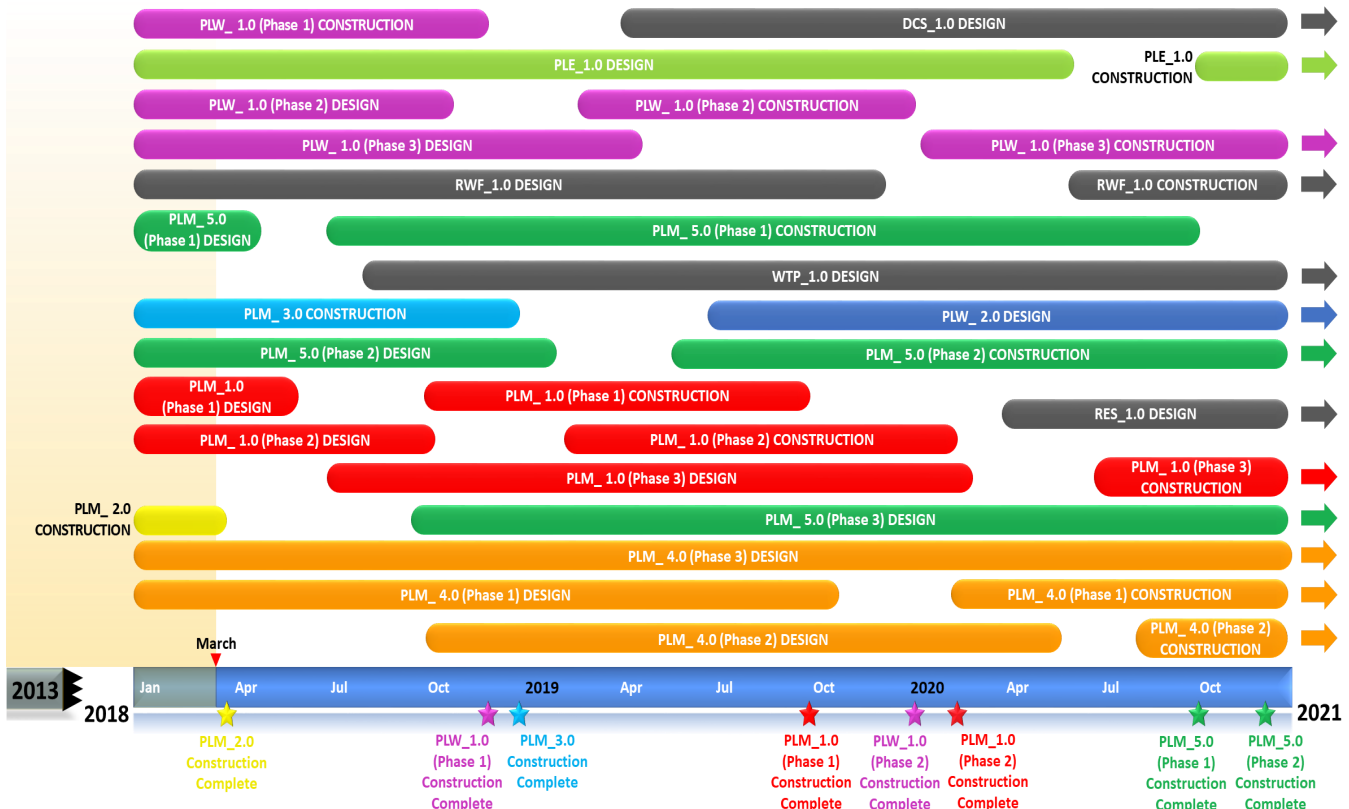
- Raw Water Facilities (RWF_1.0) Construction Manager/ General Contractor (CM/GC) Request for Proposal (RFP) (released February 14, 2018)
- Water Treatment Plant and Finished Water Pump Station (WTP_1.0/FPS_1.0) Design RFP (released March 2, 2018)

Upcoming Events and Procurements

- Scholls Area Pipeline Project (PLM_5.1) Construction Invitation to Bid (ITB) by Washington County (Quarter 2, 2018)
- Wilsonville Area Pipeline Project (PLM_1.1) Construction ITB (Quarter 3, 2018)

Schedule Summary

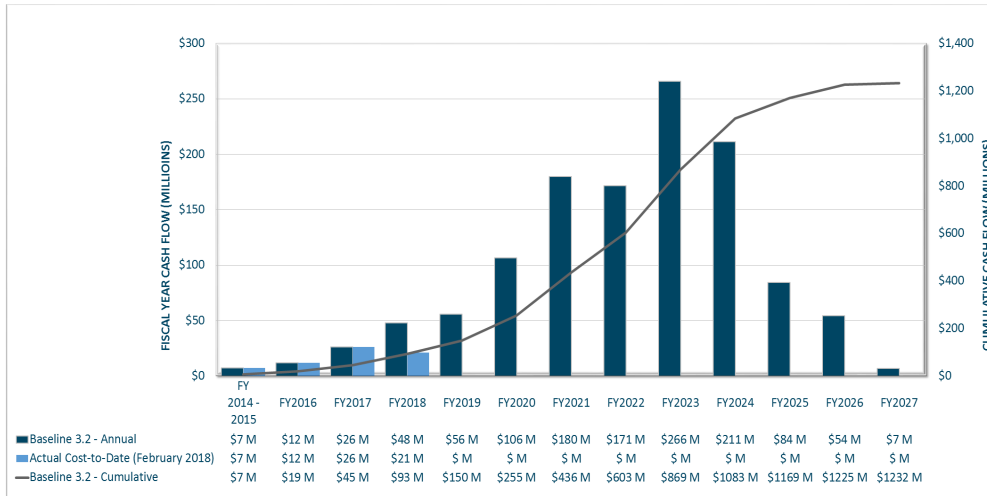
WWSP design and planning began in 2013; the Willamette Water Supply System is expected to be in service by July 2026. Below are the major milestones and activities forecasted from 2018 to 2021*. The WWSP team is committed to on-time delivery. See page 4 for descriptions of the referenced projects below.



*The actual order and duration of projects continues to be refined and is subject to change.

Forecast Cost Summary

The graph below illustrates the projected WWSP cash flow by fiscal year (FY July 1 to June 30)*. The cumulative cash flow establishes the budgeted \$1.2 billion, which accounts for actual and current projected costs, including projected escalation in the cost of labor, materials, and equipment required to build the projects that comprise the WWSP.



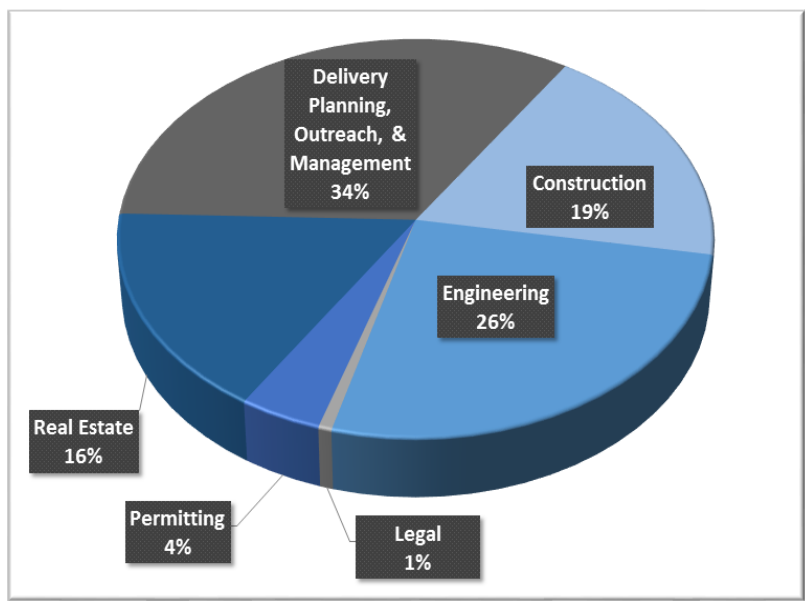
Costs for FY 2018 are \$21 million. Cumulative costs are projected to be \$93 million through the end of FY 2018.

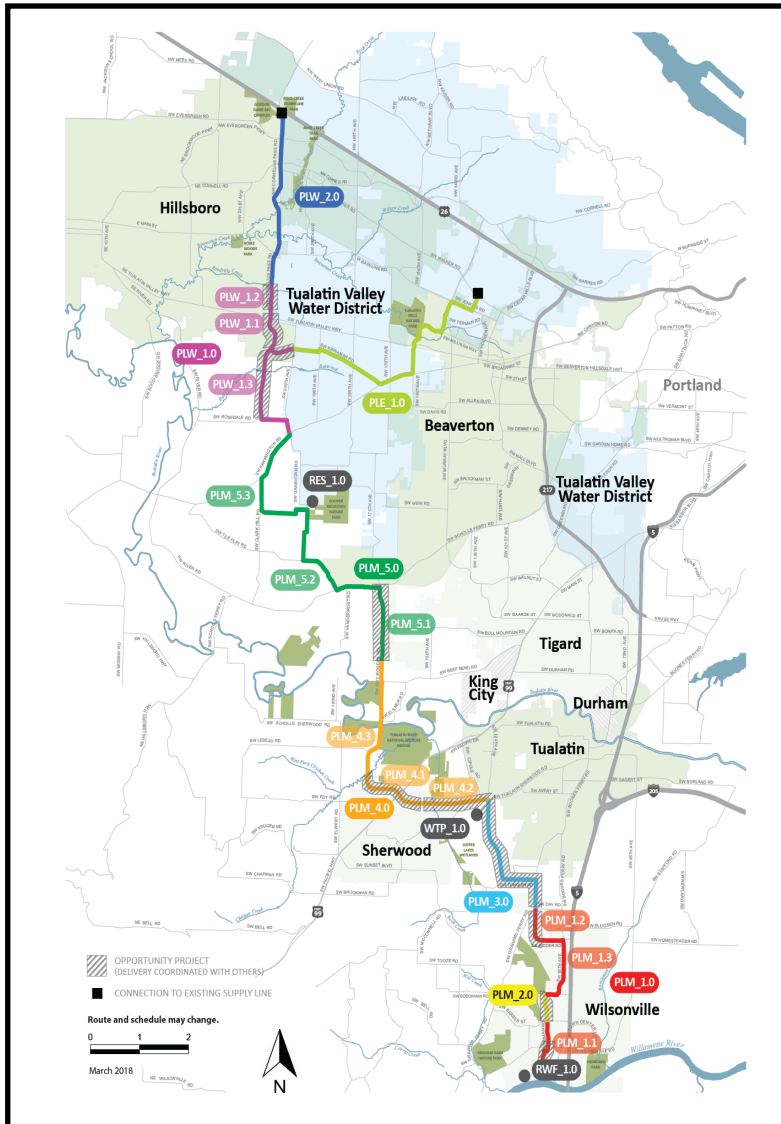
*Data continues to be refined and is subject to change.

Cumulative Cost Summary

WWSP cumulative costs are tracked and updated monthly. The chart below summarizes the distribution of cumulative costs through February 2018.

Cumulative Water Supply Program costs to date are approximately \$66 million, with the majority spent on planning, engineering, construction, and real estate activities.





PLW_2.0 Cornelius Pass Pipeline Project
(Frances Road to Highway 26)

Description: 3.4-mile water pipeline along Cornelius Pass Rd. from Frances Rd. to Hwy 26; connects to existing supply lines for City of Hillsboro and TVWD.

Status: Planning Phase (Design Start: 07/2019)

PLW_1.0 South Hillsboro Area Pipeline Project
(Farmington Road to Frances Road)

Description: 3.9-mile water pipeline from SW Farmington Rd. at SW 209th Ave. to Cornelius Pass Rd. at Frances Rd.; also east on Kinnaman Rd. between Cornelius Pass Rd. and SW 209th Ave.

Status: Construction Phases (Phase 1 Construction Complete: 11/2018; Phase 2 Construction Start: 02/2019)

PLE_1.0 Beaverton Area Pipeline Project
(SW 209th Avenue to Walker Road)

Description: 5.5-mile water pipeline from SW 209th Ave. at Kinnaman Rd. to SW Cedar Hills Blvd.; connects to existing TVWD system.

Status: Design Phase (Construction Start: 10/2020)

RES_1.0 South Beaverton Area Water Storage Tanks (Storage Tanks)

Description: Two 15-million gallon storage tanks located on Cooper Mountain.

Status: Planning Phase (Design Start: 04/2020)

PLM_5.0 Scholls Area Pipeline Project
(North of Beef Bend Road to Farmington Road)

Description: 7.2 mile water pipeline from SW Roy Rogers Rd. 0.5 north of SW Beef Bend Rd. to SW Farmington Rd. at SW 209th Ave.

Status: Design Phase (Phase 1 Construction Start: 07/2018)

PLM_4.0 Tualatin-Sherwood Area Pipeline Project
(SW 124th Avenue to north of Beef Bend Road)

Description: 5.3-mile water pipeline from 124th Ave. at SW Tualatin Sherwood Rd. along SW Roy Rogers Rd. to 0.5 miles north of SW Beef Bend Rd.

Status: Design Phase (Phase 1 Construction Start: 02/2020)

PLM_3.0 124th Avenue Partnership Project
(SW 124th Avenue Extension)

Description: 2.7-mile water pipeline from Grahams Ferry Rd. at Day Rd. to 124th Ave. at SW Tualatin Sherwood Rd.

Status: Construction Phase (Complete: 12/2018)

PLM_2.0 Kinsman Road Partnership Project
(Kinsman Road Extension)

Description: 0.5-mile water pipeline along Kinsman Rd. between Barber St. and Boeckman Rd.

Status: Construction Phase (Complete)

PLM_1.0 Wilsonville Area Pipeline Project
(WRWTP to Day Road)

Description: 3.0-mile water pipeline from WRWTP to the intersection of SW Garden Acres Rd. at Day Rd.

Status: Design Phase (Phase 1 Construction Start: 10/2018)

WTP_1.0 Willamette Water Supply System Water Treatment Plant
(Water Treatment Plant (WTP))

FPS_1.0 *Description:* 60-million gallon per day water treatment plant (WTP_1.0), including a finished water pump station (FPS_1.0) and a control system (DCS_1.0) located near Sherwood.

DCS_1.0 *Status:* Planning Phase (WTP/FPS Design Start: 08/2018)
Planning Phase (DCS Design Start: 04/2019)

RWF_1.0 Raw Water Facilities Expansion
(Raw Water Facilities (RWF) Expansion)

Description: Expansion of the existing raw water pump station and intake infrastructure at the Willamette River WTP (WRWTP) in Wilsonville to 60 million gallons per day of initial capacity for the Willamette Water Supply System.

Status: Design Phase (Construction Start: 06/2020)

For more information about the WWSP, visit www.ourreliablewater.org or call 503.941.4570.