

Our Future Water Supply

Tualatin Valley Water District (TVWD) and the City of Hillsboro, collectively referred to as the Partners, have identified the Willamette Water Supply System as the best option for future delivery of drinking water to their service areas in Washington County. Development of the Willamette Water Supply System is being led by the Partners. Other water providers in the region are also looking at their options for future participation. The mid-Willamette River at Wilsonville will be the new water supply source for the Willamette Water Supply System. Although current demands are met through other sources, the addition of a new source will provide improved water supply reliability and system resiliency. Developing an additional water supply through a partnership supports the region's plans for responsible growth within the urban growth boundary.

Willamette Water Supply

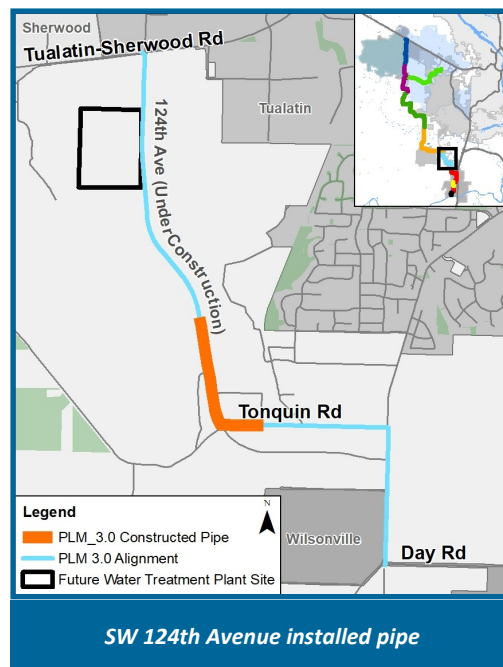
Our Reliable Water

Monthly Progress Report

Month End February 2018

124th Avenue Partnership Project Construction Progress

The **124th Avenue Partnership Project** is a 2.7-mile pipeline and new roadway project located in Washington County from SW Garden Acres Rd. to Tualatin-Sherwood Rd. Construction crews made substantial progress in January and February installing more than 4,000 linear feet of pipe on SW Tonquin Rd. and the future SW 124th Ave. extension. In March, pipe installation will continue on SW 124th Ave., and road construction work will continue on SW Tonquin Rd. Construction is scheduled for completion in late 2018.



South Hillsboro Area Pipeline Project Construction Progress



Testing pipe near TV Hwy for South Hillsboro Area Pipeline Project

The **South Hillsboro Area Pipeline Project** (Phase 1) includes installation of nearly 0.5 miles of 48-inch-diameter pipeline under the Cornelius Pass/Tualatin Valley (TV) Hwy intersection and continuing south through a portion of the Reed's Crossing development. Testing of the pipeline began in January and

installation of pipeline components continued through February. Work on the 48-inch-diameter transmission line under the Cornelius Pass Rd. extension was completed in January and paving of the new road began in February. Activities in March will focus on completing the connection to the Hillsboro distribution system and the Joint Water Commission's South Transmission Line. Construction is in coordination with Newland Communities who plans to begin building homes in the area in 2018. Phase I will be extended south to the future intersection of Cornelius Pass Rd. and Kinnaman Rd. later in 2018. Phase 2 (Cornelius Pass Rd. north of the TV Hwy intersection) is currently under design with construction expected to begin in early 2019.

Procurement & Business Opportunities

WWSP staff are preparing for several upcoming professional services and construction contractor procurements. Listed below are active procurements and upcoming events and procurements. Procurement opportunities are also published at <http://www.ourreliablewater.org/business-opportunities>.

Active Procurements

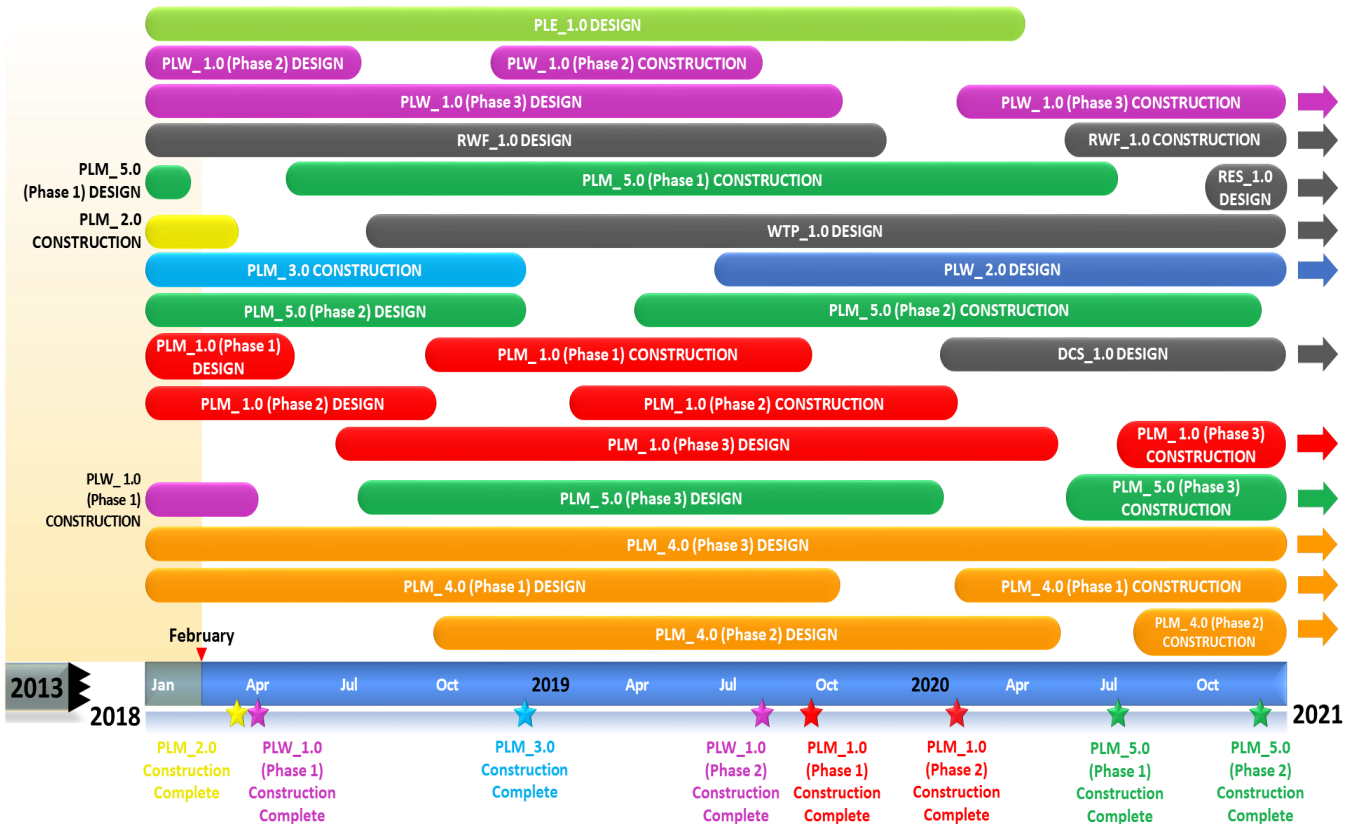
- Raw Water Facilities (RWF_1.0) Construction Manager/ General Contractor (CM/GC) RFP (released February 14, 2018)
- Water Treatment Plant and Finished Water Pump Station (WTP_1.0/FPS_1.0) Design Request for Proposal (RFP) (released March 2, 2018)

Upcoming Procurements

- Scholls Area Pipeline Project (PLM_5.1) Construction Invitation to Bid (ITB) by Washington County (Quarter 2, 2018)
- Wilsonville Area Pipeline Project (PLM_1.1) Construction ITB (Quarter 2, 2018)

Schedule Summary

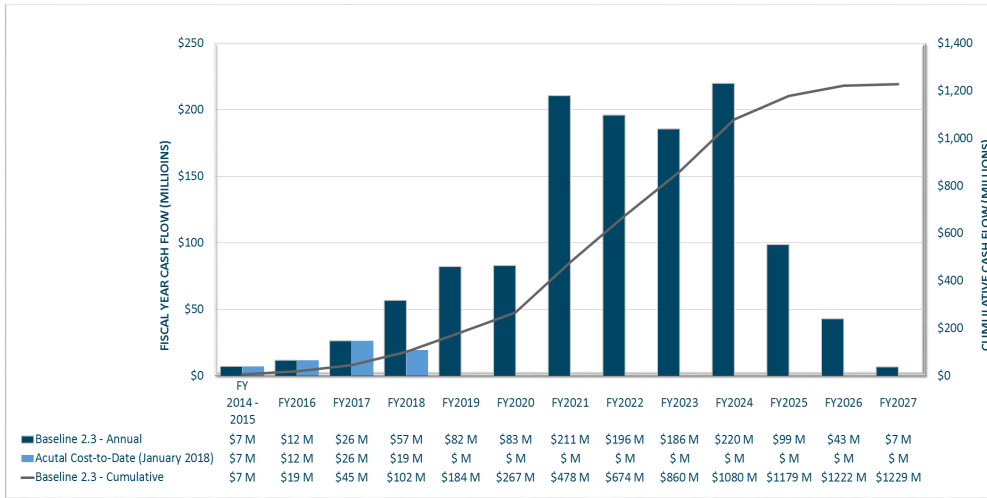
WWSP design and planning began in 2013; the Willamette Water Supply System is expected to be in service by July 2026. Below are the major milestones and activities forecasted from 2017 to 2020*. The WWSP team is committed to on-time delivery. See page 4 for descriptions of the referenced projects below.



*The actual order and duration of projects continues to be refined and is subject to change.

Forecast Cost Summary

The graph below illustrates the projected WWSP cash flow by fiscal year (FY July 1 to June 30)*. The cumulative cash flow establishes the budgeted \$1.2 billion, which accounts for actual and current projected costs, including projected escalation in the cost of labor, materials, and equipment required to build the projects that comprise the WWSP.



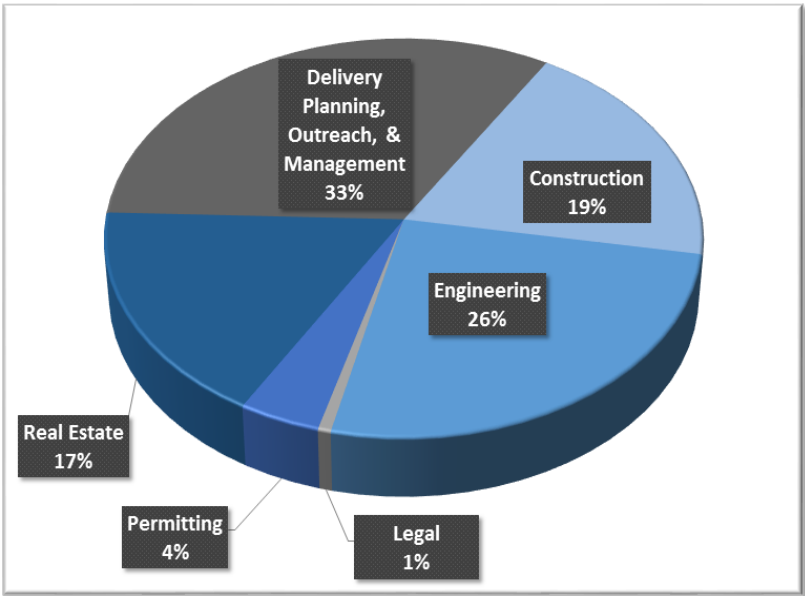
Costs for FY 2018 are \$19 million. Cumulative costs are projected to be \$102 million through the end of FY 2018.

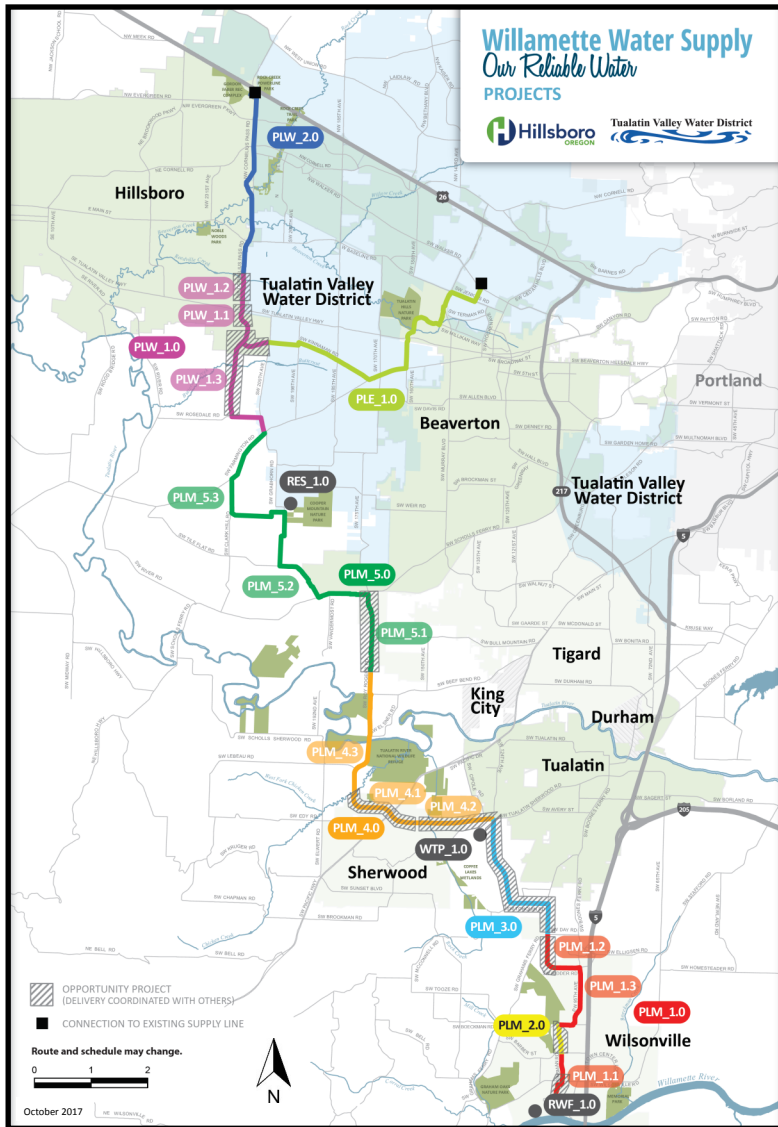
*Data continues to be refined and is subject to change.

Cumulative Cost Summary

WWSP cumulative costs are tracked and updated monthly. The chart below summarizes the distribution of cumulative costs through January 2018.

Cumulative Water Supply Program costs to date are approximately \$64 million, with the majority spent on planning, engineering, construction, and real estate activities.





PLW_2.0 Cornelius Pass Pipeline Project
(Frances Road to Highway 26)

Description: 3.4-mile water pipeline along Cornelius Pass Rd. from Frances Rd. to Hwy 26; connects to existing supply lines for City of Hillsboro and TVWD.

Status: Planning Phase (Design Start: 07/2019)

PLW_1.0 South Hillsboro Area Pipeline Project
(Farmington Road to Frances Road)

Description: 3.9-mile water pipeline from SW Farmington Rd. at SW 209th Ave. to Cornelius Pass Rd. at Frances Rd.; also east on Kinnaman Rd. between Cornelius Pass Rd. and SW 209th Ave.

Status: Design and Construction Phases (Phase 2 Construction Start: 11/2018)

PLE_1.0 Beaverton Area Pipeline Project
(SW 209th Avenue to Walker Road)

Description: 5.5-mile water pipeline from SW 209th Ave. at Kinnaman Rd. to SW Cedar Hills Blvd.; connects to existing TVWD system.

Status: Design Phase (Construction Start: 09/2020)

RES_1.0 South Beaverton Area Water Storage Tanks (Storage Tanks)

Description: Two 15-million gallon storage tanks located on Cooper Mountain.

Status: Planning Phase (Design Start: 10/2020)

PLM_5.0 Scholls Area Pipeline Project
(North of Beef Bend Road to Farmington Road)

Description: 7.2 mile water pipeline from SW Roy Rogers Rd. 0.5 north of SW Beef Bend Rd. to SW Farmington Rd. at SW 209th Ave.

Status: Design Phase (Phase 1 Construction Start: 06/2018)

PLM_4.0 Tualatin-Sherwood Area Pipeline Project
(SW 124th Avenue to north of Beef Bend Road)

Description: 5.3-mile water pipeline from 124th Ave. at SW Tualatin Sherwood Rd. along SW Roy Rogers Rd. to 0.5 miles north of SW Beef Bend Rd.

Status: Design Phase (Phase 1 Construction Start: 02/2020)

PLM_3.0 124th Avenue Partnership Project
(SW 124th Avenue Extension)

Description: 2.7-mile water pipeline from Grahams Ferry Rd. at Day Rd. to 124th Ave. at SW Tualatin Sherwood Rd.

Status: Construction Phase (Complete: 12/2018)

PLM_2.0 Kinsman Road Partnership Project
(Kinsman Road Extension)

Description: 0.5-mile water pipeline along Kinsman Rd. between Barber St. and Boeckman Rd.

Status: Construction Phase (Complete: 03/2018)

PLM_1.0 Wilsonville Area Pipeline Project
(WRWTP to Day Road)

Description: 3.0-mile water pipeline from WRWTP to the intersection of SW Garden Acres Rd. at Day Rd.

Status: Design Phase (Phase 1 Construction Start: 09/2018)

WTP_1.0 Willamette Water Supply System Water Treatment Plant
(Water Treatment Plant (WTP))

FPS_1.0 *Description:* 60 million gallon per day water treatment plant (WTP_1.0), including a finished water pump station (FPS_1.0) and a control system (DCS_1.0) located near Sherwood.

DCS_1.0 *Status:* Planning Phase (WTP/FPS Design Start: 08/2018)

RWF_1.0 Raw Water Facilities Expansion
(Raw Water Facilities (RWF) Expansion)

Description: Expansion of the existing raw water pump station and intake infrastructure at the Willamette River WTP (WRWTP) in Wilsonville to 60 million gallons per day of initial capacity for the Willamette Water Supply System.

Status: Design Phase (Phase 1 Construction Start: 06/2020)

For more information about the WWSP, visit www.ourreliablewater.org or call 503.941.4570.