

Our Future Water Supply

Tualatin Valley Water District (TVWD) and the City of Hillsboro, collectively referred to as the Partners, have identified the Willamette Water Supply System as the best option for future delivery of drinking water to their service areas in Washington County. Development of the Willamette Water Supply System is being led by the Partners. Other water providers in the region are also looking at their options for future participation. The mid-Willamette River at Wilsonville will be the new water supply source for the Willamette Water Supply System. Although current demands are met through other sources, the addition of a new source will provide improved water supply reliability and system resiliency. Developing an additional water supply through a partnership supports the region's plans for responsible growth within the urban growth boundary.

Willamette Water Supply Monthly Progress Report

Our Reliable Water

Month End January 2018

Significant Milestones Achieved in 2017

The past year was significant for the Willamette Water Supply Program (WWSP) with three projects under construction, nine projects under design, and one project completing pipe installation. In addition, multiple studies, real estate acquisitions, and community events were conducted throughout the year. Below is an overview of major milestones achieved in 2017:



South Hillsboro Area Pipeline Project
pipe installation

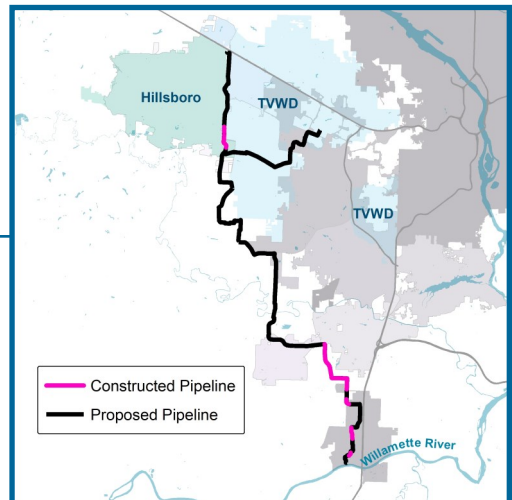
- Completed pipe installation on Kinsman Road Partnership Project
- Began construction on South Hillsboro Area Pipeline Project (Phase 1)

- Progressed pipeline construction on 124th Avenue Partnership Project
- Began design of four pipeline sections and Raw Water Facilities; continued design of four pipeline sections
- Modified pipeline alignments on four pipeline sections
- Submitted Federal permit application
- Increased community outreach through open houses, booths at community activities, and business outreach events

Upcoming Milestones and Priorities in 2018

Several significant events and milestones are planned for 2018 to progress the WWSP. Below is an overview of some of these planned milestones and priorities:

- Complete Kinsman Road Partnership Project and 124th Avenue Partnership Project—nearly four miles of pipeline
- Begin construction on Wilsonville Area Pipeline Project (in coordination with City of Wilsonville) and Scholls Area Pipeline Project (in partnership with Washington County)



Projected pipeline progress for 2018

- Continue design of several pipeline sections and begin design of the water treatment plant
- Coordinate with Federal, State, and local agencies for permits and approvals
- Continue to update ratepayers, local communities, and facility neighbors

Procurement & Business Opportunities

WWSP staff are preparing for several upcoming professional services and construction contractor procurements. Listed below are active procurements and upcoming events and procurements. Procurement opportunities are also published at <http://www.ourreliablewater.org/business-opportunities>.

Active Procurements

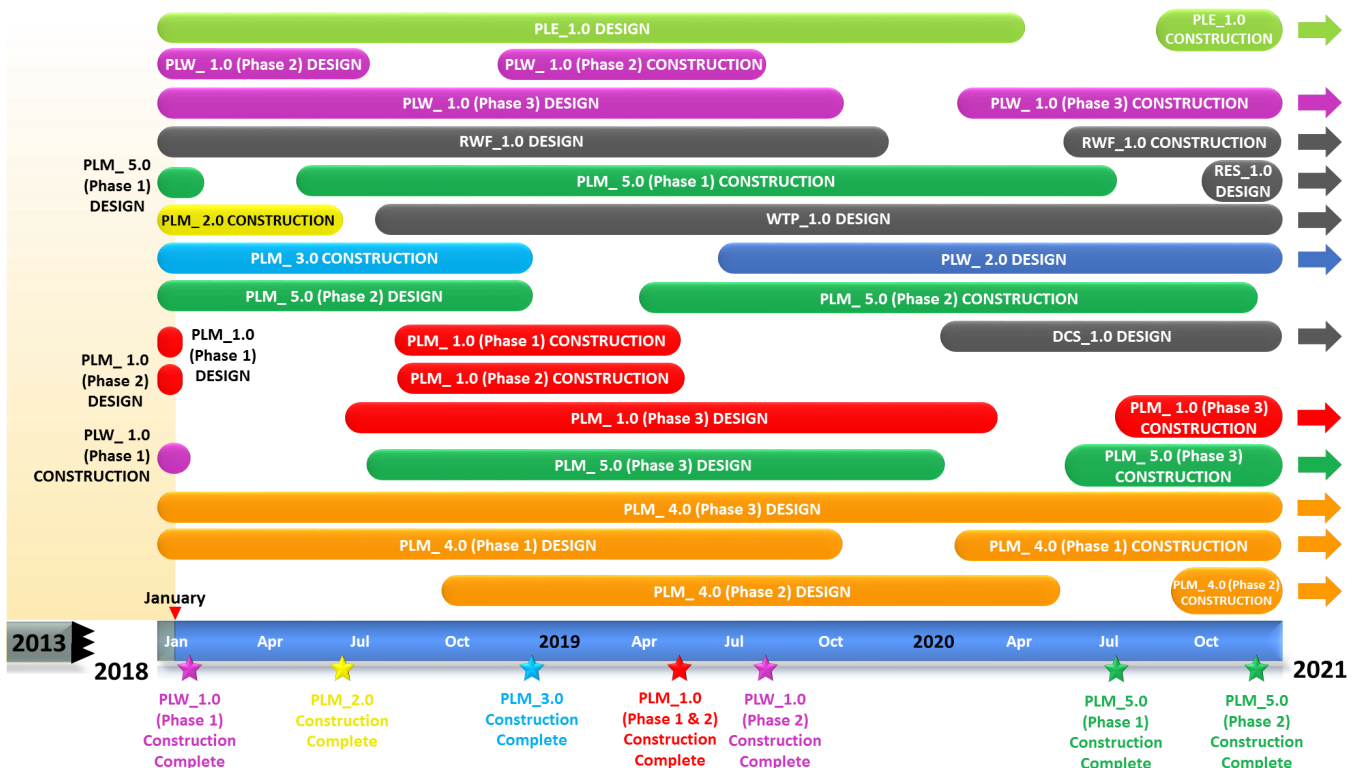
- No active procurements

Upcoming Procurements

- Raw Water Facilities (RWF_1.0) Construction Manager/ General Contractor (CM/GC) Request for Proposal (RFP) (Quarter 1, 2018)
- Water Treatment Plant and Finished Water Pump Station (WTP_1.0/FPS_1.0) Design RFP (Quarter 1, 2018)
- Scholls Area Pipeline Project (PLM_5.1) Construction Invitation to Bid (ITB) by Washington County (Quarter 1, 2018)
- Wilsonville Area Pipeline Project (PLM_1.1) Construction ITB (Quarter 2, 2018)

Schedule Summary

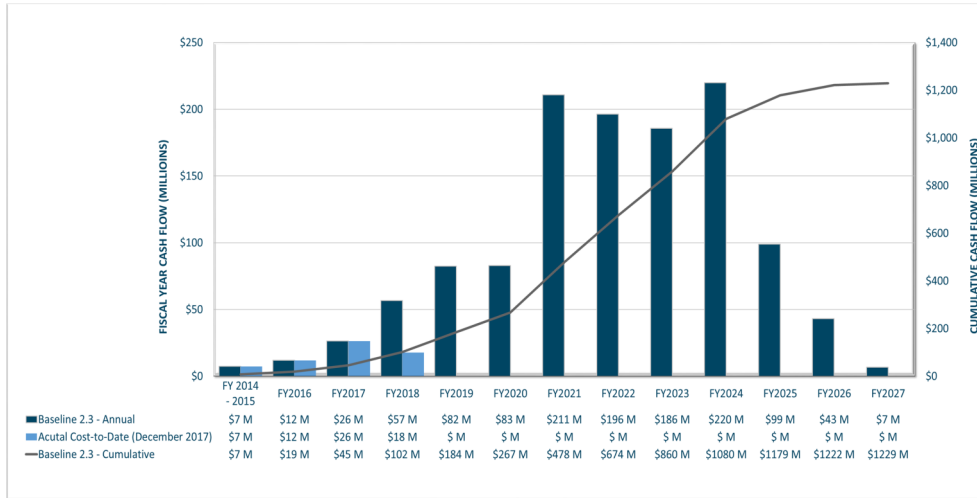
WWSP design and planning began in 2013; the Willamette Water Supply System is expected to be in service by July 2026. Below are the major milestones and activities forecasted from 2017 to 2020*. The WWSP team is committed to on-time delivery. See page 4 for descriptions of the referenced projects below.



*The actual order and duration of projects continues to be refined and is subject to change.

Forecast Cost Summary

The graph below illustrates the projected WWSP cash flow by fiscal year (FY July 1 to June 30)*. The cumulative cash flow establishes the budgeted \$1.2 billion, which accounts for actual and current projected costs, including projected escalation in the cost of labor, materials, and equipment required to build the projects that comprise the WWSP.



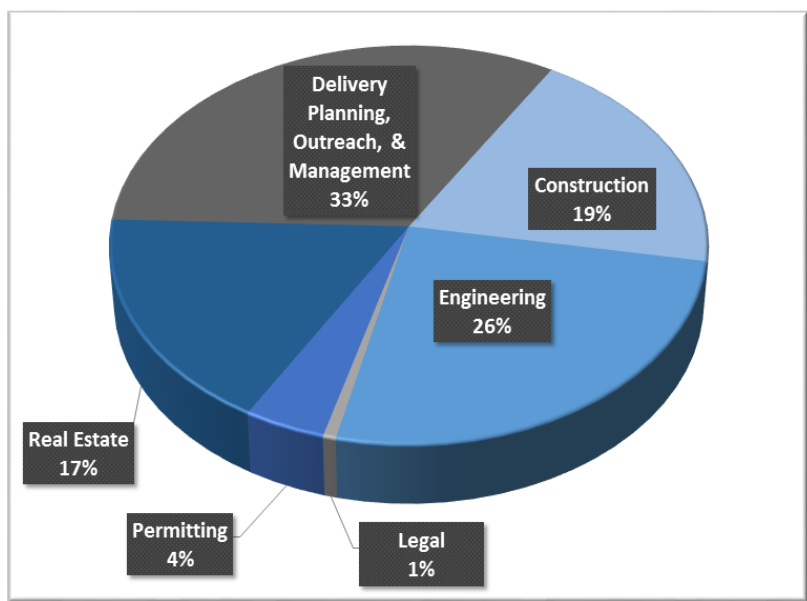
Costs for FY 2018 are \$18 million. Cumulative costs are projected to be \$102 million through the end of FY 2018.

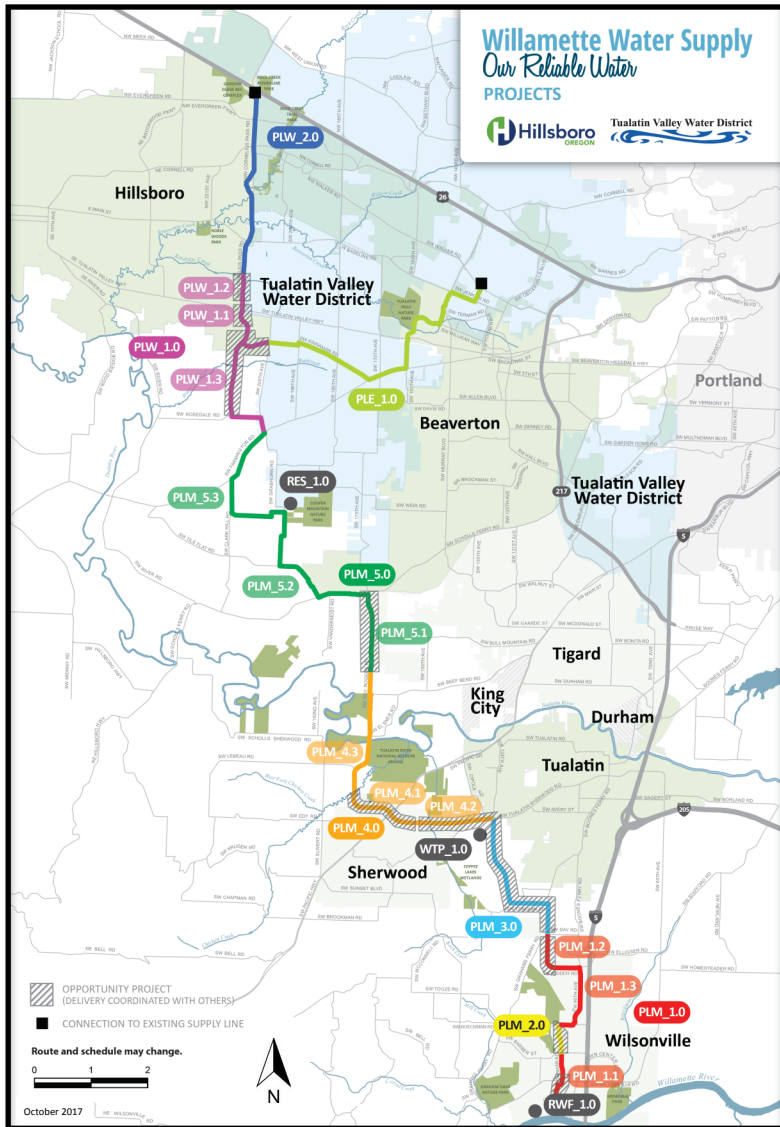
*Data continues to be refined and is subject to change.

Cumulative Cost Summary

WWSP cumulative costs are tracked and updated monthly. The chart below summarizes the distribution of cumulative costs through December 2017.

Cumulative Water Supply Program costs to date are approximately \$63 million, with the majority spent on planning, engineering, construction, and real estate activities.





PLW_2.0 Cornelius Pass Pipeline Project
(Frances Road to Highway 26)

Description: 3.4-mile water pipeline along Cornelius Pass Rd. from Frances Rd. to Hwy 26; connects to existing supply lines for City of Hillsboro and TVWD.

Status: Planning Phase (Design Start: 07/2019)

PLW_1.0 South Hillsboro Area Pipeline Project
(Farmington Road to Frances Road)

Description: 3.9-mile water pipeline from SW Farmington Rd. at SW 209th Ave. to Cornelius Pass Rd. at Frances Rd.; also east on Kinnaman Rd. between Cornelius Pass Rd. and SW 209th Ave.

Status: Design and Construction Phases (Phase 2 Construction Start: 11/2018)

PLE_1.0 Beaverton Area Pipeline Project
(SW 209th Avenue to Walker Road)

Description: 5.5-mile water pipeline from SW 209th Ave. at Kinnaman Rd. to SW Cedar Hills Blvd.; connects to existing TVWD system.

Status: Design Phase (Construction Start: 09/2020)

RES_1.0 South Beaverton Area Water Storage Tanks (Storage Tanks)

Description: Two 15-million gallon storage tanks located on Cooper Mountain.

Status: Planning Phase (Design Start: 10/2020)

PLM_5.0 Scholls Area Pipeline Project
(North of Beef Bend Road to Farmington Road)

Description: 7.2 mile water pipeline from SW Roy Rogers Rd. 0.5 north of SW Beef Bend Rd. to SW Farmington Rd. at SW 209th Ave.

Status: Design Phase (Phase 1 Construction Start: 05/2018)

PLM_4.0 Tualatin-Sherwood Area Pipeline Project
(SW 124th Avenue to north of Beef Bend Road)

Description: 5.3-mile water pipeline from 124th Ave. at SW Tualatin Sherwood Rd. along SW Roy Rogers Rd. to 0.5 miles north of SW Beef Bend Rd.

Status: Design Phase (Phase 1 Construction Start: 02/2020)

PLM_3.0 124th Avenue Partnership Project
(SW 124th Avenue Extension)

Description: 2.7-mile water pipeline from Grahams Ferry Rd. at Day Rd. to 124th Ave. at SW Tualatin Sherwood Rd.

Status: Construction Phase (Complete: 12/2018)

PLM_2.0 Kinsman Road Partnership Project
(Kinsman Road Extension)

Description: 0.5-mile water pipeline along Kinsman Rd. between Barber St. and Boeckman Rd.

Status: Construction Phase (Complete: 06/2018)

PLM_1.0 Wilsonville Area Pipeline Project
(WRWTP to Day Road)

Description: 3.0-mile water pipeline from WRWTP to the intersection of SW Garden Acres Rd. at Day Rd.

Status: Design Phase (Phase 1 & 2 Construction Start: 05/2018)

WTP_1.0 Willamette Water Supply System Water Treatment Plant
(Water Treatment Plant (WTP))

FPS_1.0 *Description:* 60 million gallon per day water treatment plant (WTP_1.0), including a finished water pump station (FPS_1.0) and a control system (DCS_1.0) located near Sherwood.

DCS_1.0 *Status:* Planning Phase (WTP/FPS Design Start: 08/2018)

RWF_1.0 Raw Water Facilities Expansion
(Raw Water Facilities (RWF) Expansion)

Description: Expansion of the existing raw water pump station and intake infrastructure at the Willamette River WTP (WRWTP) in Wilsonville to 60 million gallons per day of initial capacity for the Willamette Water Supply System.

Status: Design Phase (Phase 1 Construction Start: 06/2020)

For more information about the WWSP, visit www.ourreliablewater.org or call 503.941.4570.