

Our Future Water Supply

Tualatin Valley Water District (TVWD) and the City of Hillsboro, collectively referred to as the Partners, have identified the Willamette Water Supply System as the best option for future delivery of drinking water to their service areas in Washington County. Development of the Willamette Water Supply System is being led by the Partners. Other water providers in the region are also looking at their options for future participation. The mid-Willamette River at Wilsonville will be the new water supply source for the Willamette Water Supply System. Although current demands are met through other sources, the addition of a new source will provide improved water supply reliability and system resiliency. Developing an additional water supply through a partnership supports the region's plans for responsible growth within the urban growth boundary.

Willamette Water Supply

Monthly Progress Report

Our Reliable Water

Month End October 2017

Seismic Design Resiliency

The Willamette Water Supply Program (WWSP), working with industry experts, has developed seismic guidelines and minimum design requirements to adapt the design of each water system component to balance water supply resiliency and cost. These guidelines and requirements are based on 12 performance goals that support the WWSP mission statement. In line with the Oregon Resilience Plan and American Lifelines Alliance, the new water system will be one of Oregon's most seismically-resilient drinking water systems—built to better withstand natural disasters, remain functional and operational during and following an earth-

quake to protect public health, and provide a stable water supply for current and future generations. The seismic guidelines and minimum design requirements identify key issues, provide a methodology to help mitigate seismic hazards and risks, and determine other types of issues that require further detailed analysis and expert input. In addition, on October 7, WWSP staff participated in **Quake Up!**, an annual earthquake preparedness event that informs and educates Washington County residents about the importance of earthquake preparedness and provides resources to help prepare for an emergency.



WWSP staff participated in the Portland Quake Up! event October 7

Regional Turnout Builds Redundancy

The South Hillsboro Area Pipeline Project, currently under construction in Hillsboro, will connect to the Joint Water Commission (JWC) South Transmission Line. This intertie will provide short-term service to the South Hillsboro area and creates a long-term emergency service. The South Hillsboro intertie provides redundancy and flexibility to meet the needs of the partners and customers for planned and unplanned JWC or WWSP system shut downs. In the near term, when Cornelius Pass Road and Blanton Street extensions and the underlying waterlines are

completed in the summer of 2018, the intertie will connect to the City of Hillsboro's main pressure zone and serve JWC water until the Willamette Water Supply System is operational in 2026. Once the water system is on-line, the intertie will be closed and the Willamette Water Supply System will feed South Hillsboro. The intertie could be opened again for maintenance or utilized in an emergency for either WWSP or JWC. The Hillsboro connection to the South Hillsboro Area Pipeline Project (Phase 1) is scheduled for completion by early 2018.

Procurement & Business Opportunities

WWSP staff are preparing for several upcoming professional services and construction contractor procurements. Listed below are active procurements and upcoming events and procurements. Procurement opportunities are also published at <http://www.ourreliablewater.org/business-opportunities>.

Active Procurements

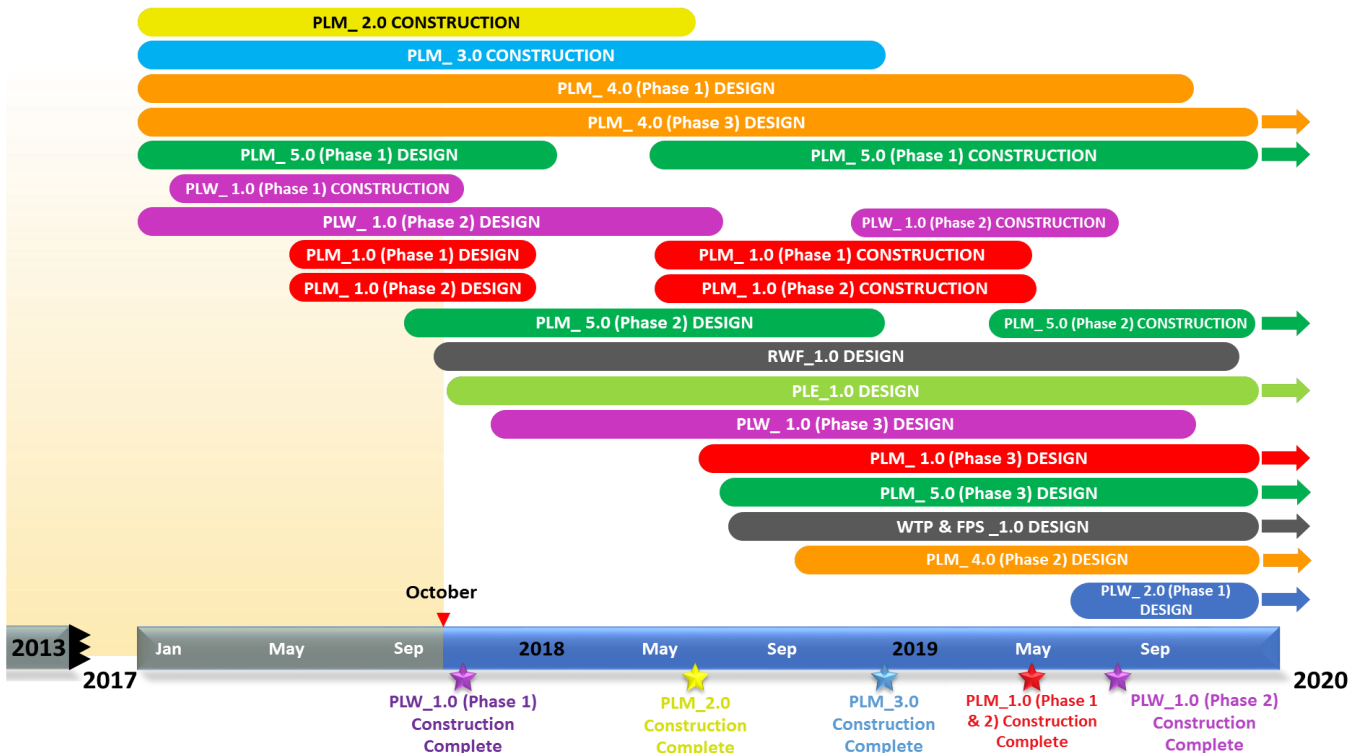
- No active procurements

Upcoming Procurements

- Scholls Area Pipeline Project (PLM_5.1) Construction Invitation to Bid (ITB) (Quarter 1, 2018) Washington County Project
- Wilsonville Area Pipeline Project (PLM_1.1 & 1.2) Construction ITB (Quarter 1, 2018)
- Raw Water Facilities Expansion (RWF_1.0) Construction Manager/General Contractor (CM/GC) Request for Proposal (RFP) (Quarter 1, 2018)
- Water Treatment Plant (WTP_1.0) Design RFP (Quarter 1, 2018)

Schedule Summary

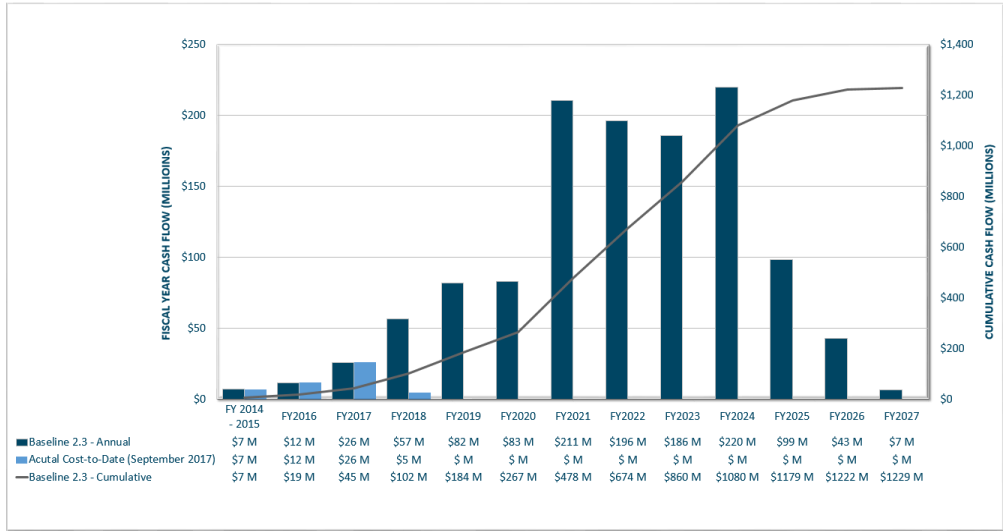
WWSP design and planning began in 2013; the Willamette Water Supply System is expected to be in service by July 2026. Below are the major milestones and activities forecasted from 2017 to 2020*. The WWSP team is committed to on-time delivery. See page 4 for descriptions of the referenced projects below.



*The actual order and duration of projects continues to be refined and is subject to change.

Forecast Cost Summary

The graph below illustrates the projected WWSP cash flow by fiscal year (FY July 1 to June 30)*. The cumulative cash flow establishes the budgeted \$1.2 billion, which accounts for actual and current projected costs, including projected escalation in the cost of labor, materials, and equipment required to build the projects that comprise the WWSP.



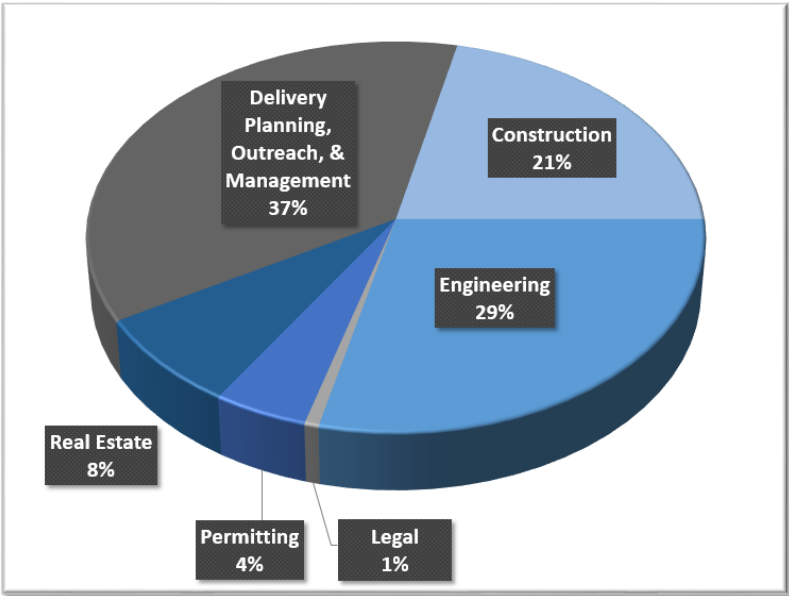
Costs for FY 2018 are \$5 million. Cumulative costs are projected to be \$102 million through the end of FY 2018.

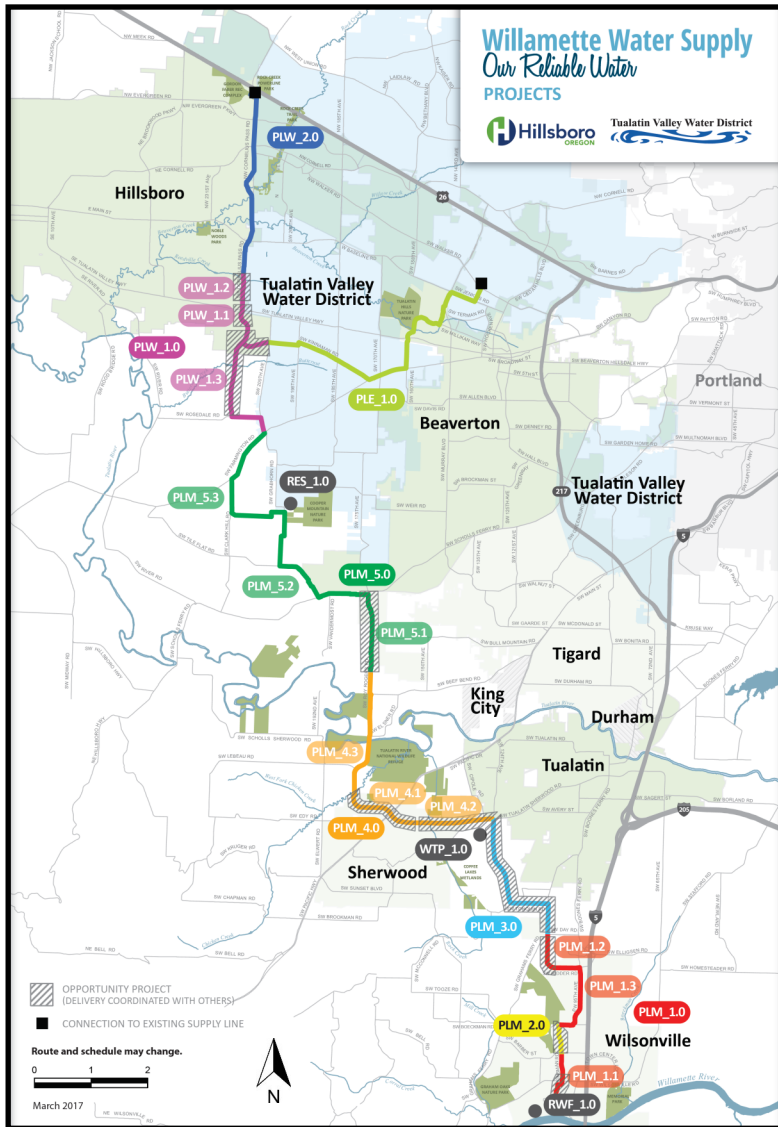
*Data continues to be refined and is subject to change.

Cumulative Cost Summary

WWSP cumulative costs are tracked and updated monthly. The pie chart below summarizes the distribution of cumulative costs through September 2017.

Cumulative Water Supply Program costs to date are approximately \$50 million, with the majority spent on planning, engineering, and construction activities.





PLW_2.0 Cornelius Pass Pipeline Project
(Frances Road to Highway 26)

Description: 3.4-mile water pipeline along Cornelius Pass Rd. from Frances Rd. to Hwy 26; connects to existing supply lines for City of Hillsboro and TVWD.

Status: Planning Phase (Design Start: 07/2019)

PLW_1.0 South Hillsboro Area Pipeline Project
(Farmington Road to Frances Road)

Description: 3.9-mile water pipeline from SW Farmington Rd. at SW 209th Ave. to Cornelius Pass Rd. at Frances Rd.; also east on Kinnaman Rd. between Cornelius Pass Rd. and SW 209th Ave.

Status: Design and Construction Phases (Phase 2 Construction start: 11/2018)

PLE_1.0 Beaverton Area Pipeline Project
(SW 209th Avenue to Walker Road)

Description: 5.5-mile water pipeline from SW 209th Ave. at Kinnaman Rd. to SW Cedar Hills Blvd.; connects to existing TVWD system.

Status: Planning Phase (Design Start: 10/2017)

RES_1.0 South Beaverton Area Water Storage Tanks (Storage Tanks)

Description: Two 15-million gallon storage tanks located on Cooper Mountain.

Status: Planning Phase (Design Start: 10/2020)

PLM_5.0 Scholls Area Pipeline Project
(Beef Bend Road to Farmington Road)

Description: 7.2 mile water pipeline from SW Roy Rogers Rd. 0.5 north of SW Beef Bend Rd. to SW Farmington Rd. at SW 209th Ave.

Status: Design Phase (Phase 1 Construction Start: 05/2018)

PLM_4.0 Tualatin-Sherwood Area Pipeline Project
(SW 124th Avenue to Beef Bend Road)

Description: 5.3-mile water pipeline from 124th Ave. at SW Tualatin Sherwood Rd. along SW Roy Rogers Rd. to 0.5 miles north of SW Beef Bend Rd.

Status: Design Phase (Phase 1 Construction Start: 02/2020)

PLM_3.0 124th Avenue Partnership Project
(SW 124th Avenue Extension)

Description: 2.7-mile water pipeline from Grahams Ferry Rd. at Day Rd. to 124th Ave. at SW Tualatin Sherwood Rd.

Status: Construction Phase (Complete: 12/2018)

PLM_2.0 Kinsman Road Partnership Project
(Kinsman Road Extension)

Description: 0.5-mile water pipeline along Kinsman Rd. between Barber St. and Boeckman Rd.

Status: Construction Phase (Complete: 06/2018)

PLM_1.0 Wilsonville Area Pipeline Project
(WRWTP to Day Road)

Description: 3.0-mile water pipeline from WRWTP to the intersection of SW Garden Acres Rd. at Day Rd.

Status: Design Phase (Phase 1 & 2 Construction Start: 05/2018)

WTP_1.0 Willamette Water Supply System Water Treatment Plant
(Water Treatment Plant (WTP))

FPS_1.0 *Description:* 60 million gallon per day water treatment plant (WTP_1.0), including a finished water pump station (FPS_1.0) and a control system (DCS_1.0) located near Sherwood.

DCS_1.0 *Status:* Planning Phase (WTP/FPS Design Start: 08/2018)

RWF_1.0 Raw Water Facilities Expansion
(Raw Water Facilities (RWF) Expansion)

Description: Expansion of the existing raw water pump station and intake infrastructure at the Willamette River WTP in Wilsonville to 60 million gallons per day of initial capacity for the Willamette Water Supply System.

Status: Design Phase (Phase 1 Construction Start: 06/2020)

For more information about the WWSP, visit www.ourreliablewater.org or call 503.941.4570.