

## Our Future Water Supply

Tualatin Valley Water District (TVWD) and the City of Hillsboro, collectively referred to as the Partners, have identified the Willamette Water Supply System as the best option for future delivery of drinking water to their service areas in Washington County. Development of the Willamette Water Supply System is being led by the Partners. Other water providers in the region are also looking at their options for future participation. The mid-Willamette River at Wilsonville will be the new water supply source for the Willamette Water Supply System. Although current demands are met through other sources, the addition of a new source will provide improved water supply reliability and system resiliency. Developing an additional water supply through a partnership supports the region's plans for responsible growth within the urban growth boundary.

# Willamette Water Supply

## Our Reliable Water

Monthly Progress Report

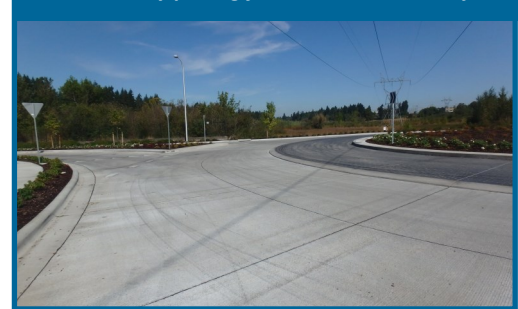
Month End September 2017

## Construction Progress

The **Kinsman Road Partnership Project** is a 0.5-mile pipeline that is being installed while the City of Wilsonville extends Kinsman Rd. to improve the roadway grid system west of I-5. Following the completion of pipe installation in May, workers performed hydrostatic testing, a test that involves filling the pipeline with water, removing air from within, and pressurizing the pipe to test for leaks. All hydrostatic testing was successfully completed in August, with final roadway paving continuing through September. Remaining work includes installation of minor pipeline components and corrosion control.



*Final roadway paving for Kinsman Road Project*

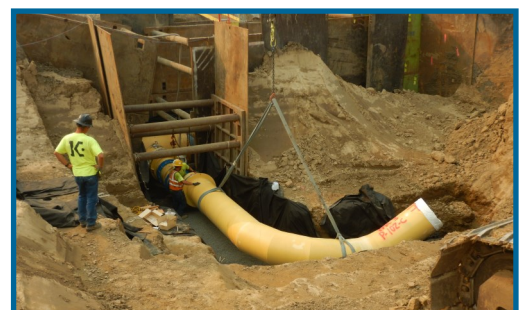


Construction crews working on the **124th Avenue Partnership Project**, a 2.7-mile pipeline and new roadway project located in Washington County from SW Garden Acres Rd. to Tualatin-Sherwood Rd., completed a trenchless crossing in September, including installation of steel casing and carrier (inner) pipe at the railroad tracks on SW Tonquin Rd. Drilling and controlled blasting operations (see [YouTube video](#)) were also performed along SW Tonquin Rd. and the future SW 124th Ave. alignment. Construction is scheduled for completion in 2018.

The **South Hillsboro Area Pipeline Project** (Phase 1) includes installation of nearly 0.5 miles of 48-inch diameter pipeline under the Cornelius Pass/Tualatin Valley (TV) Hwy. intersection and continuing north through a portion of the Reed's Crossing development. In September, crews continued the installation of vaults and turnout piping—future connection points to the City of Hillsboro's existing distribution line—at Blanton St. and at TV Hwy. Phase I construction is scheduled for completion in 2017.



*Installation of steel casing pipe at railroad tracks on SW Tonquin Rd.*



*Installation of turnout pipe at Blanton St. and TV Hwy.*

## Procurement & Business Opportunities

WWSP staff are preparing for several upcoming professional services and construction contractor procurements. A procurement forecast schedule is featured in this section of the monthly report. Listed below are active procurements and upcoming events and procurements. Procurement opportunities are also published at <http://www.ourreliablewater.org/business-opportunities>.

### Active Procurements

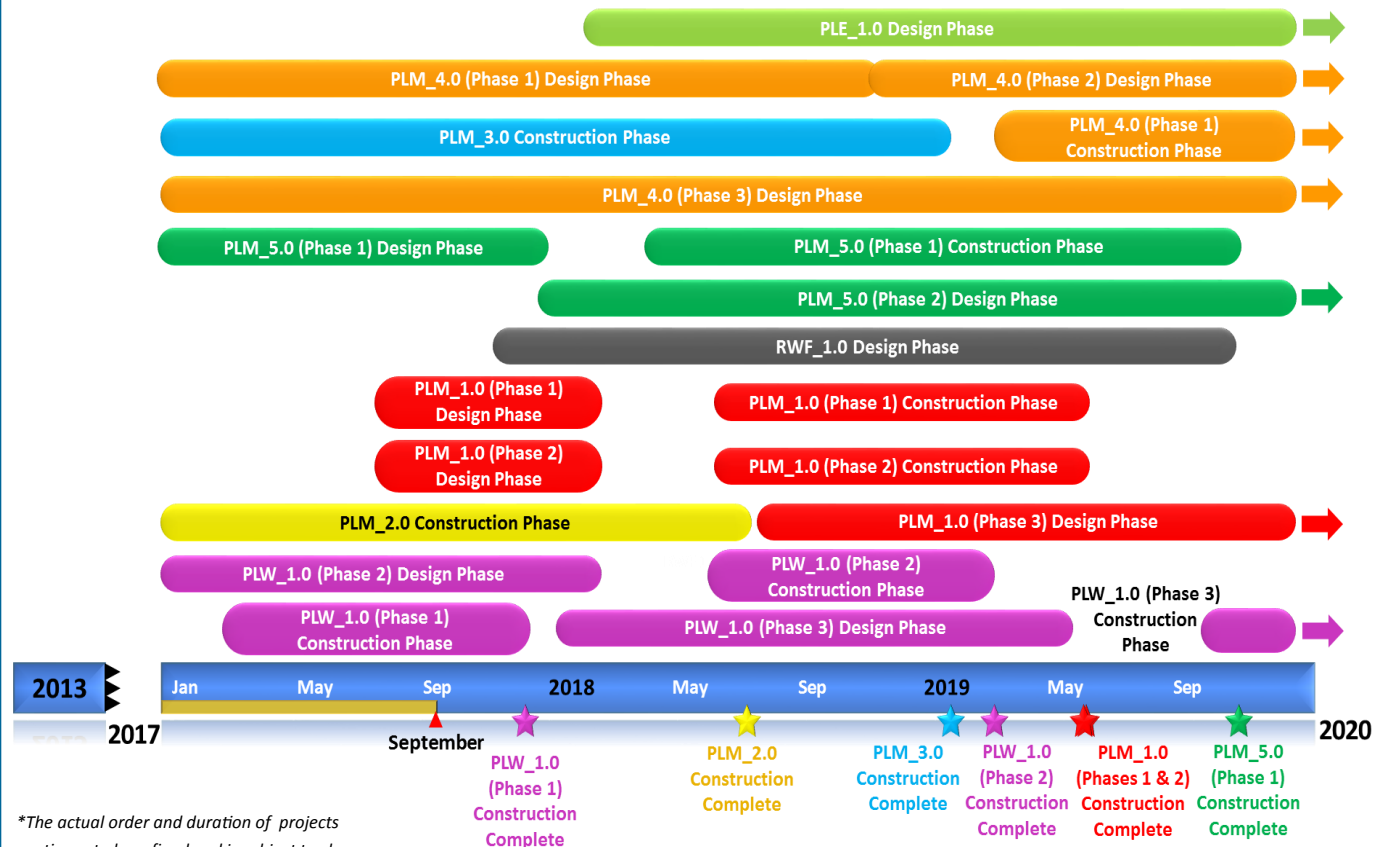
- Request for Proposal (RFP) for program land surveying services

### Upcoming Procurements

- Scholls Area Pipeline Project (PLM\_5.1) Construction Invitation to Bid (Quarter 1, 2018) Washington County Project

## Schedule Summary

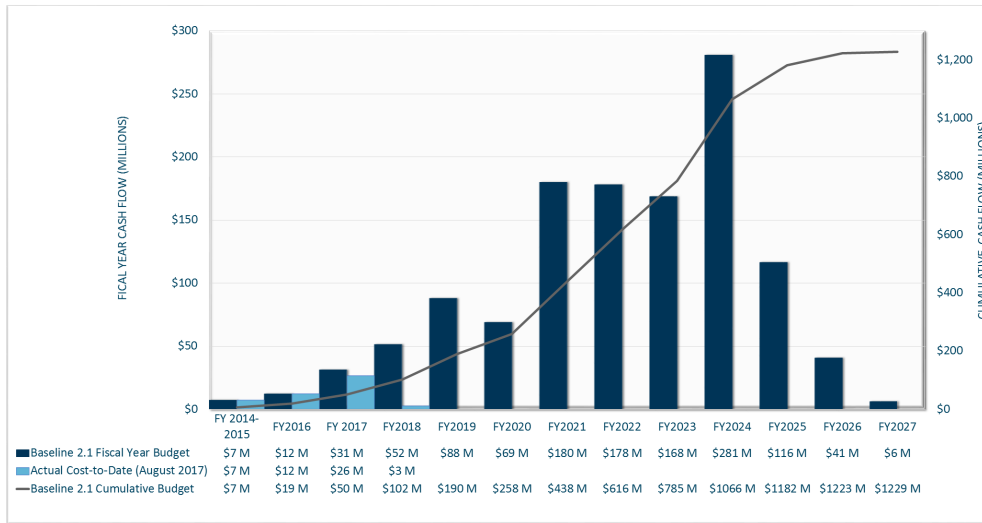
WWSP design and planning began in 2013; the WWSP is expected to be in service by July 2026. Below are the major milestones and activities forecasted from 2017 to 2020\*. The WWSP team is committed to on-time delivery. See page 4 for descriptions of the referenced projects below.



\*The actual order and duration of projects continues to be refined and is subject to change.

## Forecast Cost Summary

The graph below illustrates the projected WWSP cash flow by fiscal year (FY July 1 to June 30)\*. The cumulative cash flow establishes the budgeted \$1.2 billion, which accounts for actual and current projected costs, including projected escalation in the cost of labor, materials, and equipment required to build the projects that comprise the WWSP.



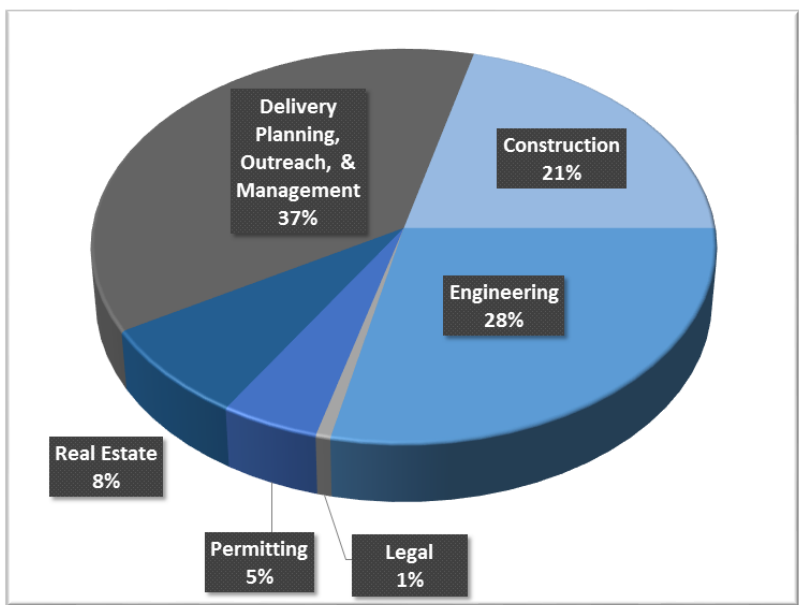
Costs for FY 2018 are \$3 million. Cumulative costs are projected to be \$97 million through the end of FY 2018.

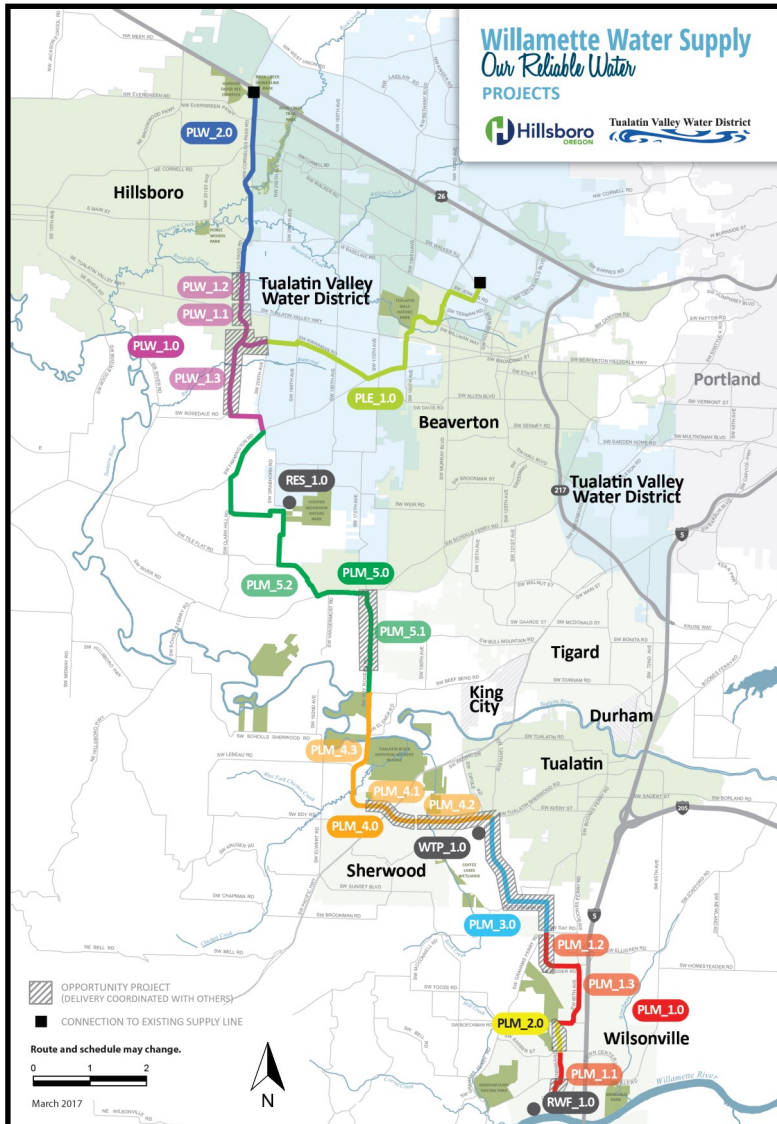
\*Data continues to be refined and is subject to change.

## Cumulative Cost Summary

WWSP cumulative costs are tracked and updated monthly. The pie chart below summarizes the distribution of cumulative costs through August 2017.

**Cumulative Water Supply Program costs to date are approximately \$48 million, with the majority spent on planning, engineering, and construction activities.**





**PLW\_2.0 Cornelius Pass Pipeline Project**  
(Frances Road to Highway 26)

*Description:* 3.4-mile water pipeline along Cornelius Pass Rd. from Frances Rd. to Hwy 26; connects to existing supply lines for City of Hillsboro and TVWD.

*Status:* Planning Phase (Design Start: 07/2020)

**PLW\_1.0 South Hillsboro Area Pipeline Project**  
(Farmington Road to Frances Road)

*Description:* 3.9-mile water pipeline from SW Farmington Rd. at SW 209th Ave. to Cornelius Pass Rd. at Frances Rd.; also east on Kinnaman Rd. between Cornelius Pass Rd. and SW 209th Ave.

*Status:* Design and Construction Phases (Construction Complete: 11/2017 Phase 1)

**PLE\_1.0 Beaverton Area Pipeline Project**  
(SW 209th Avenue to Walker Road)

*Description:* 5.5-mile water pipeline from SW 209th Ave. at Kinnaman Rd. to SW Cedar Hills Blvd.; connects to existing TVWD system.

*Status:* Planning Phase (Design Start: 01/2018)

**RES\_1.0 South Beaverton Area Water Storage Tanks** (Storage Tanks)

*Description:* Two 15-million gallon storage tanks located on Cooper Mountain.

*Status:* Planning Phase (Design Start: 10/2020)

**PLM\_5.0 Scholls Area Pipeline Project**  
(Beef Bend Road to Farmington Road)

*Description:* 7.7-mile water pipeline from SW Roy Rogers Rd. at SW Beef Bend Rd. to SW Farmington Rd. at SW 209th Ave.

*Status:* Design Phase (Construction Start: 03/2018 Phase 1)

**PLM\_4.0 Tualatin-Sherwood Area Pipeline Project**  
(SW 124th Avenue to Beef Bend Road)

*Description:* 4.8-mile water pipeline from 124th Ave. at SW Tualatin Sherwood Rd. to SW Roy Rogers Rd. at SW Beef Bend Rd.

*Status:* Design Phase (Construction Start: 02/2019 Phase 1)

**PLM\_3.0 124th Avenue Partnership Project**  
(SW 124th Avenue Extension)

*Description:* 2.7-mile water pipeline from Grahams Ferry Rd. at Day Rd. to 124th Ave. at SW Tualatin Sherwood Rd.

*Status:* Construction Phase (Complete: 12/2018)

**PLM\_2.0 Kinsman Road Partnership Project**  
(Kinsman Road Extension)

*Description:* 0.5-mile water pipeline along Kinsman Rd. between Barber St. and Boeckman Rd.

*Status:* Construction Phase (Complete: 06/2018)

**PLM\_1.0 Wilsonville Area Pipeline Project**  
(WRWTP to Day Road)

*Description:* 3.0-mile water pipeline from WRWTP to the intersection of SW Garden Acres Rd. at Day Rd.

*Status:* Design Phase (Phase 1 & 2 Construction Start: 05/2018)

**WTP\_1.0 Willamette Water Supply System Water Treatment Plant**  
(Water Treatment Plant (WTP))

**FPS\_1.0** *Description:* 60 million gallon per day water treatment plant (WTP\_1.0), including a finished water pump station (FPS\_1.0) and a control system (DCS\_1.0) located near Sherwood.

**DCS\_1.0** *Status:* Planning Phase (Design Start: 02/2020)

**RWF\_1.0 Raw Water Facilities Expansion**  
(Raw Water Facilities (RWF) Expansion)

*Description:* Expansion of the existing raw water pump station and intake infrastructure at the Willamette River WTP in Wilsonville to 60 million gallons per day of initial capacity for the Willamette Water Supply System.

*Status:* Planning Phase (Design Start: 10/2017)

For more information about the WWSP, visit [www.ourreliablewater.org](http://www.ourreliablewater.org) or call 503.941.4570.