

Our Future Water Supply

Tualatin Valley Water District (TVWD) and the City of Hillsboro, collectively referred to as the Partners, have identified the Willamette Water Supply System as the best option for future delivery of drinking water to their service areas in Washington County. Development of the Willamette Water Supply System is being led by the Partners.

Other water providers in the region are also looking at their options for future participation. The mid-Willamette River at Wilsonville will be the new water supply source for the Willamette Water Supply System. Although current demands are met through other sources, the addition of a new source will provide improved water supply reliability and system resiliency. Developing an additional water supply through a partnership supports the region's plans for responsible growth within the urban growth boundary.

Willamette Water Supply

Our Reliable Water

Monthly Progress Report

Month End July 2017

Active Construction Projects



South Hillsboro Area Pipeline Project 48-inch diameter pipe installation

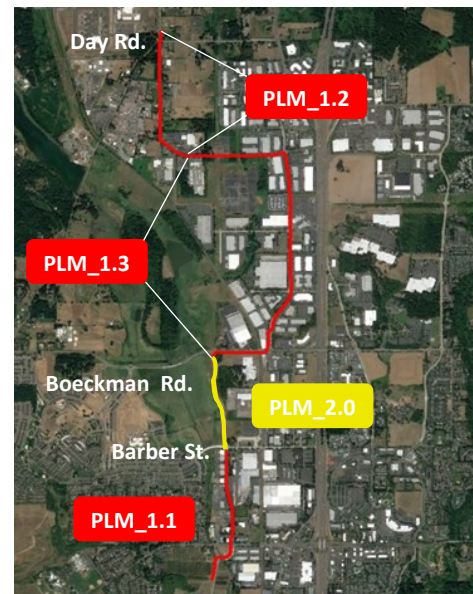
The **South Hillsboro Area Pipeline Project** (Phase 1) includes installation of nearly 0.5 miles of 48-inch diameter pipeline through a portion of the new Reed's Crossing development and continuing north under the Cornelius Pass/Tualatin Valley (TV) Hwy. intersection. All of the 48-inch diameter pipe has been installed in the tunneled casing

beneath TV Hwy. (see July issue of [Willamette Water Monthly](#) for more details or our [YouTube video](#)). Installation of the 18-inch Blanton St. turnout (future pipe connection) will begin mid to late August. Phase 1 is slated for completion in the fall of 2017. Phase 2 construction, in partnership with Washington County, is scheduled to begin in the summer of 2018.

On-site preparation for pipeline work began in late July on the south end of the **124th Avenue Partnership Project**, a 2.7-mile pipeline and new roadway project located in Washington County from SW Garden Acres Rd. to Tualatin-Sherwood Rd. Pipe installation under the railroad on SW Tonquin Rd. is anticipated to begin in late August. Construction is scheduled for completion by the end of 2018.

Design Begins on Wilsonville Area Pipeline Project

The Wilsonville Area Pipeline Project is a 3.2 mile pipeline from the Willamette River Water Treatment Plant (WRWTP), located on the Willamette River in Wilsonville, to the intersection of SW Garden Acres Rd. at Day Rd. in Washington County. HDR Engineering, Inc. (HDR) was recently selected as design consultant for all three phases (PLM_1.1, PLM_1.2, and PLM_1.3) of this pipeline project. The project alignment mostly follows paved roads and public right-of-way and will require construction under railroads and major intersections. Staff are presently advancing design for PLM_1.1 and PLM_1.2. Construction of those phases is scheduled to begin in May 2018.



Procurement & Business Opportunities

Willamette Water Supply Program staff are preparing for several upcoming professional services and construction contractor procurements. A procurement forecast schedule is featured in this section of the monthly report. Listed below are active procurements and upcoming events and procurements. Procurement opportunities are also published at <http://www.ourreliablewater.org/business-opportunities>.

Active Procurements

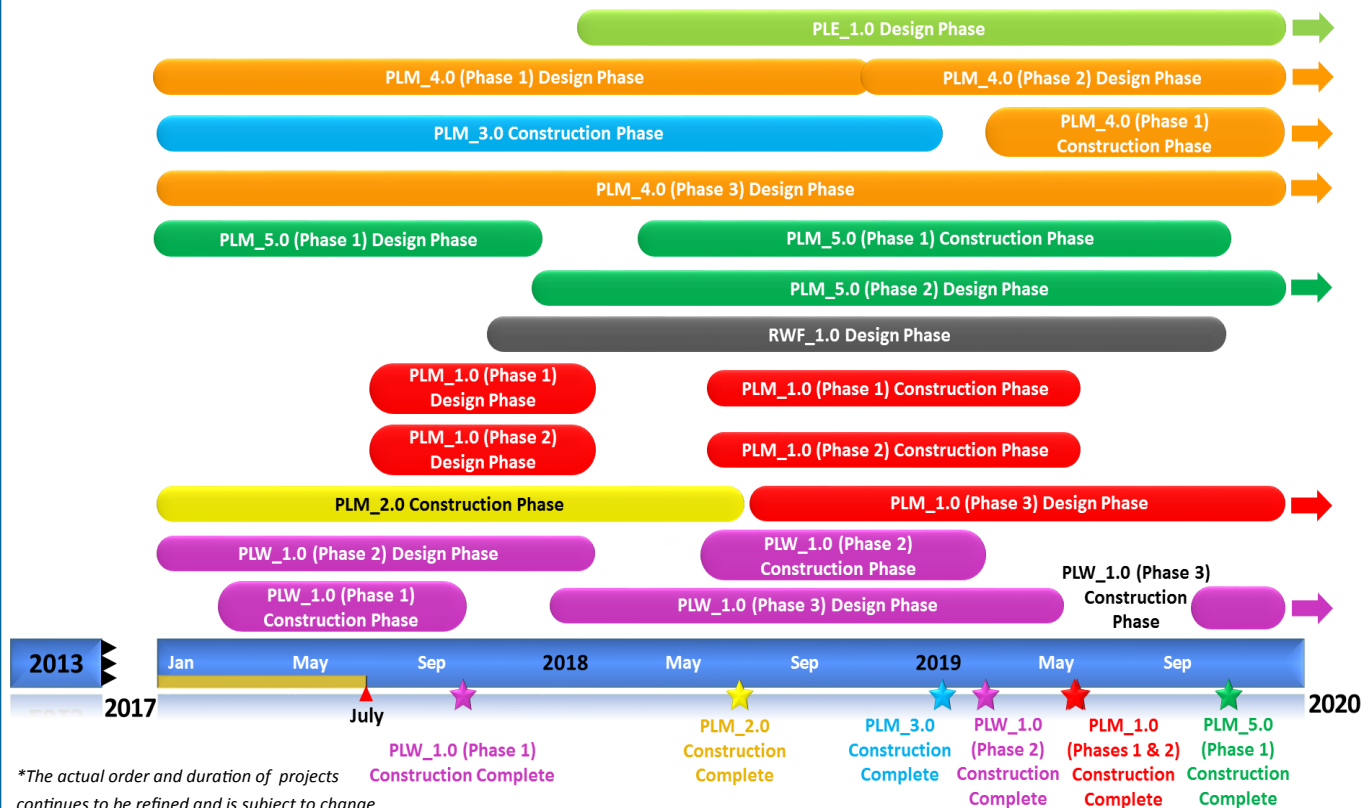
- Request for Proposal (RFP) for program land surveying services
- RFP for construction management services
- Beaverton Area Pipeline Project (PLE_1.0) RFP for Design, Bidding Phase, and Services During Construction (proposals due August 31, 2017)

Upcoming Procurements

- Scholls Area Pipeline Project (PLM_5.1) Construction Invitation to Bid (Quarter 1, 2018) Washington County Project
- Wilsonville Area Pipeline Project (PLM_1.0) Phases 1 & 2 Construction (Quarter 1, 2018)

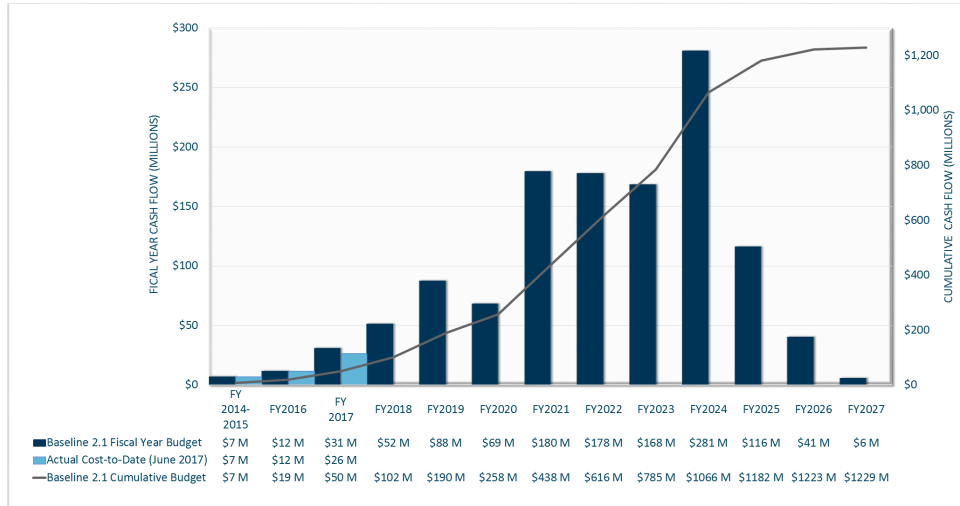
Schedule Summary

WWSP design and planning began in 2013; the Willamette Water Supply System is expected to be in service by July 2026. Below are the major milestones and activities forecasted from 2017 to 2020*. The WWSP team is committed to on-time delivery. See page 4 for descriptions of the referenced projects below.



Forecast Cost Summary

The graph below illustrates the projected WWSP cash flow by fiscal year (FY July 1 to June 30)*. The cumulative cash flow establishes the budgeted \$1.2 billion, which accounts for actual and current projected costs, including projected escalation in the cost of labor, materials, and equipment required to build the projects that comprise the WWSP.



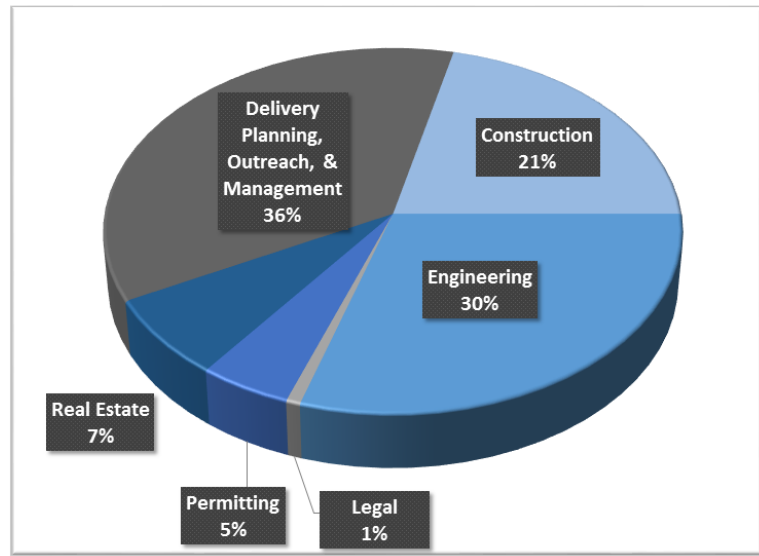
Costs for FY 2017 are \$26 million. Cumulative total costs are \$45 million through the end of FY 2017.

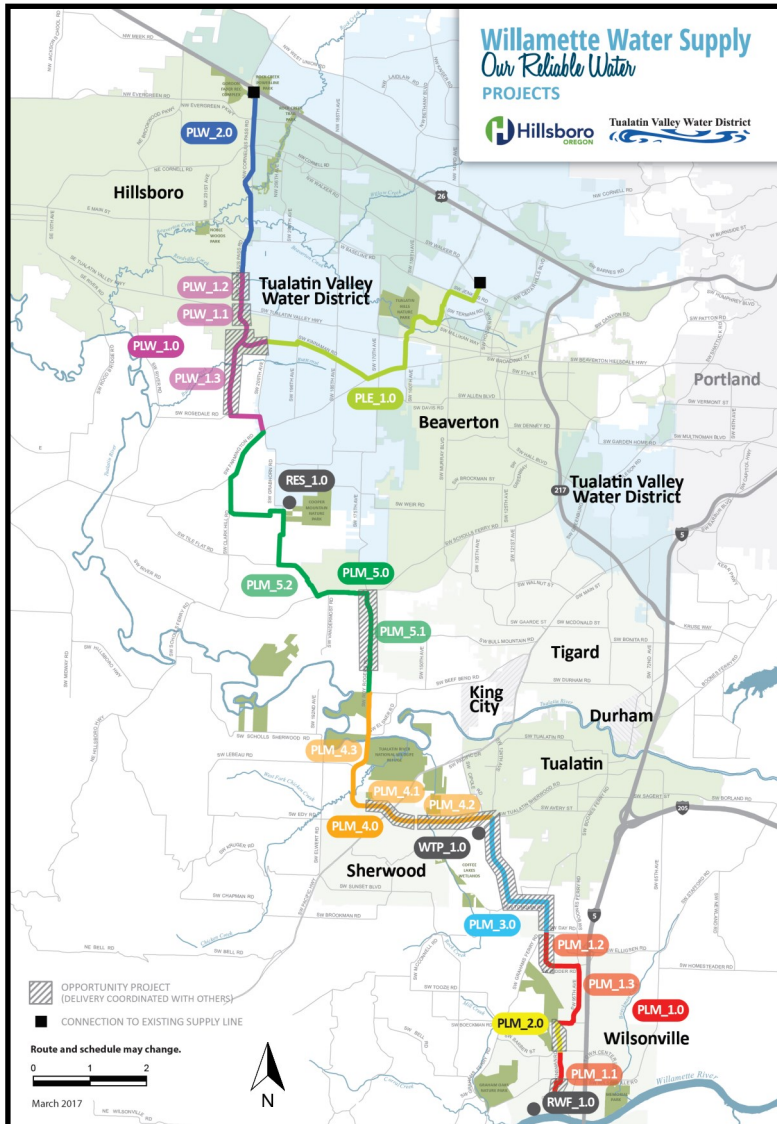
*Data continues to be refined and is subject to change.

Cumulative Cost Summary

WWSP cumulative costs are tracked and updated monthly. The pie chart below summarizes the distribution of cumulative costs through June 2017.

Cumulative Water Supply Program costs to date are approximately \$45 million, with the majority spent on planning, engineering, and construction activities.





PLW_2.0 Cornelius Pass Pipeline Project
(Franches Road to Highway 26)

Description: 3.4-mile water pipeline along Cornelius Pass Rd. from Franches Rd. to Hwy 26; connects to existing supply lines for City of Hillsboro and TVWD.

Status: Planning Phase (Design Start: 07/2020)

PLW_1.0 South Hillsboro Area Pipeline Project
(Farmington Road to Franches Road)

Description: 3.9-mile water pipeline from SW Farmington Rd. at SW 209th Ave. to Cornelius Pass Rd. at Franches Rd.; also east on Kinnaman Rd. between Cornelius Pass Rd. and SW 209th Ave.

Status: Design and Construction Phases (Construction Complete: 09/2017 Phase 1)

PLE_1.0 Beaverton Area Pipeline Project
(SW 209th Avenue to Walker Road)

Description: 5.5-mile water pipeline from SW 209th Ave. at Kinnaman Rd. to SW Cedar Hills Blvd.; connects to existing TVWD system.

Status: Planning Phase (Design Start: 01/2018)

RES_1.0 South Beaverton Area Water Storage Tanks
(Storage Tanks)

Description: Two 15-million gallon storage tanks located on Cooper Mountain.

Status: Planning Phase (Design Start: 10/2020)

PLM_5.0 Scholls Area Pipeline Project
(Beef Bend Road to Farmington Road)

Description: 7.7-mile water pipeline from SW Roy Rogers Rd. at SW Beef Bend Rd. to SW Farmington Rd. at SW 209th Ave.

Status: Design Phase (Construction Start: 03/2018 Phase 1)

PLM_4.0 Tualatin-Sherwood Area Pipeline Project
(SW 124th Avenue to Beef Bend Road)

Description: 4.8-mile water pipeline from 124th Ave. at SW Tualatin Sherwood Rd. to SW Roy Rogers Rd. at SW Beef Bend Rd.

Status: Design Phase (Construction Start: 02/2019 Phase 1)

PLM_3.0 124th Avenue Partnership Project
(SW 124th Avenue Extension)

Description: 2.7-mile water pipeline from Grahams Ferry Rd. at Day Rd. to 124th Ave. at SW Tualatin Sherwood Rd.

Status: Construction Phase (Complete: 12/2018)

PLM_2.0 Kinsman Road Partnership Project
(Kinsman Road Extension)

Description: 0.5-mile water pipeline along Kinsman Rd. between Barber St. and Boeckman Rd.

Status: Construction Phase (Complete: 06/2018)

PLM_1.0 Wilsonville Area Pipeline Project
(WRWTP to Day Road)

Description: 3.0-mile water pipeline from WRWTP to the intersection of SW Garden Acres Rd. at Day Rd.

Status: Design Phase (Construction Start: 05/2018 Phase 1 & 2)

WTP_1.0 Willamette Water Supply System Water Treatment Plant
(Water Treatment Plant)

Description: 60 million gallon per day water treatment plant (WTP_1.0), including a finished water pump station (FPS_1.0) and a control system (DCS_1.0) located near Sherwood.

Status: Planning Phase (Design Start: 02/2020)

RWF_1.0 Raw Water Facilities Expansion
(Raw Water Facilities (RWF) Expansion)

Description: Expansion of the existing raw water pump station and intake infrastructure at the Willamette River Water Treatment Plant (WRWTP) in Wilsonville to 60 million gallons per day of initial capacity for the Willamette Water Supply System.

Status: Planning Phase (Design Start: 10/2017)

For more information about the WWSP, visit www.ourreliablewater.org or call 503.941.4570.