

Our Future Water Supply

Tualatin Valley Water District (TVWD) and the City of Hillsboro, collectively referred to as the Partners, have identified the Willamette Water Supply System as the best option for future delivery of drinking water to their service areas in Washington County. Development of the Willamette Water Supply System is being led by the Partners. Other water providers in the region are also looking at their options for future participation. The mid-Willamette River at Wilsonville will be the new water supply source for the Willamette Water Supply System. Although current demands are met through other sources, the addition of a new source will provide improved water supply reliability and system resiliency. Developing an additional water supply through a partnership supports the region’s plans for responsible growth within the urban growth boundary.

Willamette Water Supply

Our Reliable Water

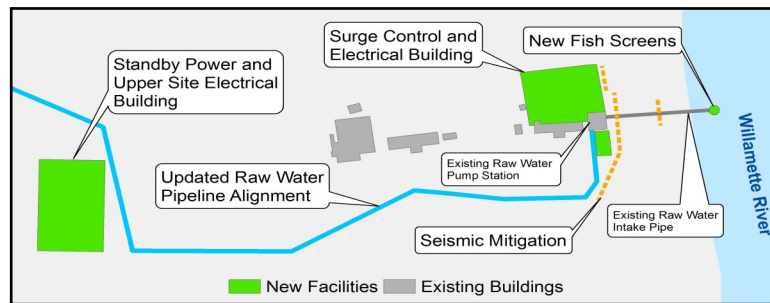
Monthly Progress Report

Month End April 2017

Willamette Water Supply System Facility Updates

Water Treatment Plant: The Willamette Water Supply System water treatment plant (WTP), a new seismically secure plant capable of initially producing 60 million gallons per day (mgd), was originally planned next to the existing Willamette River WTP in Wilsonville. However, a more optimal location north of Wilsonville along the SW 124th Avenue corridor has been identified. Willamette Water Supply Program (WWSP) staff are working closely with Washington County and the cities of Sherwood and Tualatin to plan this future facility. Design will start in early 2020 with construction anticipated to begin in 2022.

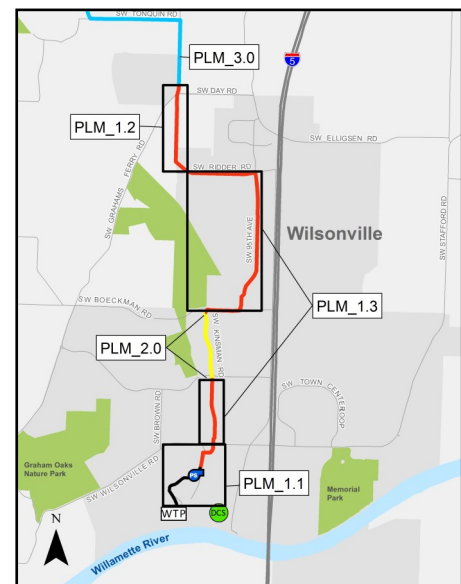
Raw Water Facilities: While the future WTP is planned north of Wilsonville, upgrades are required at the Willamette River WTP site. These modifications to the existing raw water pump station and intake infrastructure are planned to begin in 2020. The expansion involves increasing the intake screens to 150 mgd diversion capacity; replacing the raw water pumps with larger pumps; installing additional electrical components; and reinforcing the top and toe of the river bank to reduce seismic and structural weaknesses (see below). Design consultant procurement is under way; design is expected to begin the fall of 2017.



Wilsonville Area Pipeline Project

The Wilsonville Area Pipeline Project, a 3.0-mile pipeline that will be installed from the Willamette River WTP to the intersection of SW Garden Acres Rd. and SW Day Rd., is now a partnership project with the City of Wilsonville. To take advantage of two roadway projects the City was already planning, the Wilsonville Area Pipeline Project was divided into three phases. The first phase (PLM_1.1) includes pipe installation along SW 5th Street to the Kinsman Road Partnership Project (PLM_2.0) in south Wilsonville. The second phase (PLM_1.2) consists of pipe installation within the Coffee Creek Industrial Area in north Wilsonville. The third phase (PLM_1.3) involves installation of the remainder of pipe (see map to the right). Design for the first two phases will begin this summer with construction anticipated in 2018. Design for the third phase will start

the summer of 2018 with construction beginning in 2020.



Procurement & Business Opportunities

WWSP staff are preparing for several upcoming professional services and construction contractor procurements. A procurement forecast schedule is featured in this section of the monthly report. Listed below are active procurements and upcoming events and procurements. Procurement opportunities are also published at <http://www.ourreliablewater.org/business-opportunities>.

Active Procurements

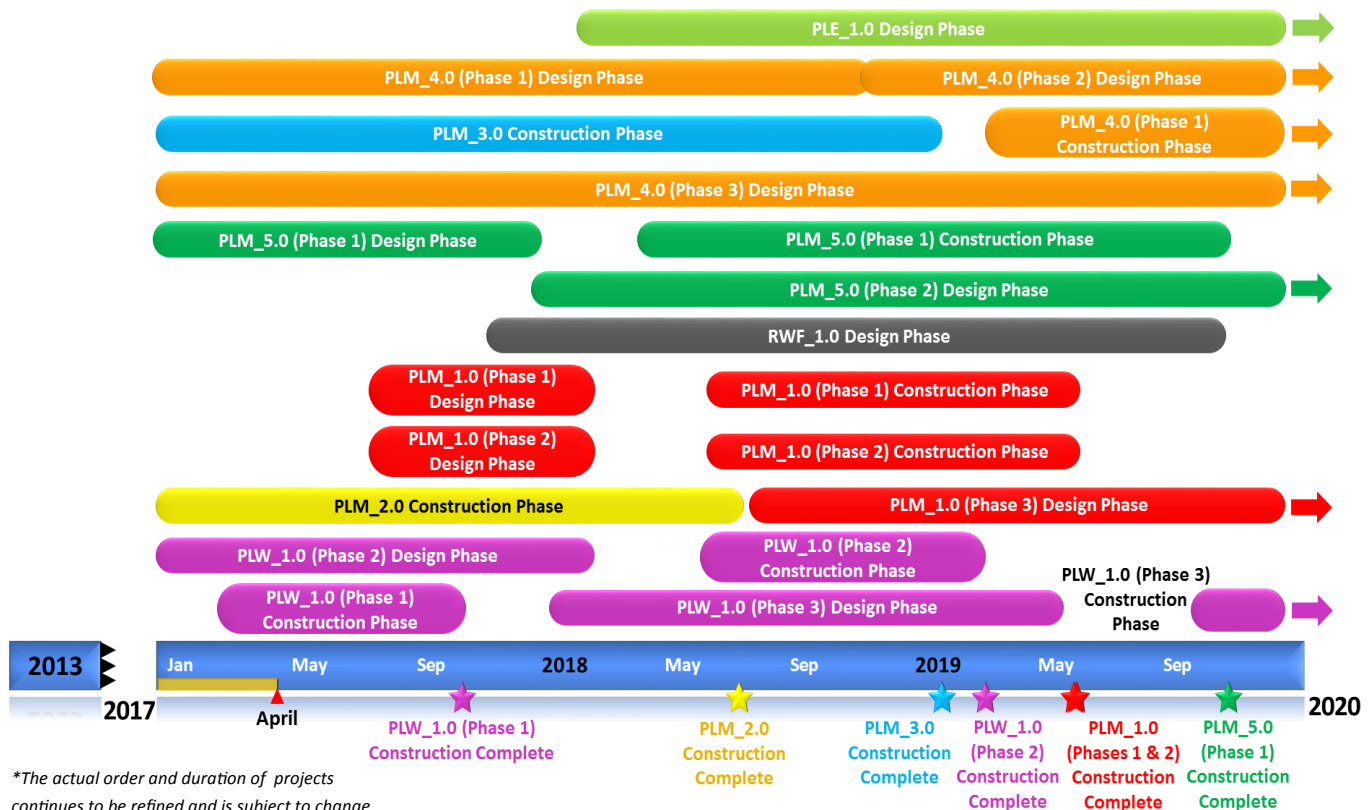
- Request for Qualification (RFQ) Construction Management Services

Upcoming Procurements

- Request for Proposal (RFP) for program survey services (Quarter 2, 2017)
- RFP for program legal services (Quarter 2, 2017)
- RFP for Raw Water Facility (RWF_1.0) Design, Bidding Phase, and Services During Construction (Quarter 2, 2017)

Schedule Summary

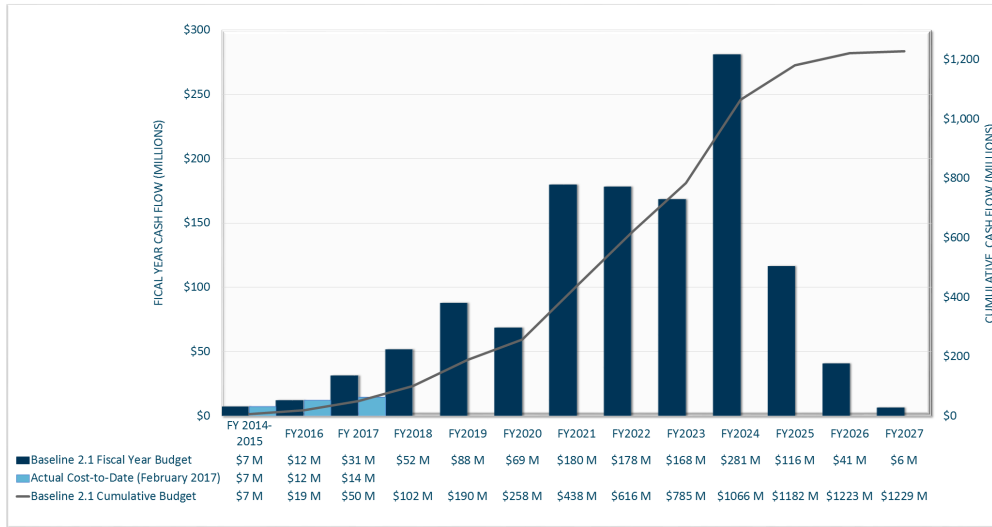
WWSP design and planning began in 2013; the WWSP is expected to be in service by July 2026. Below are the major milestones and activities forecasted from 2017 to 2020*. The WWSP team is committed to on-time delivery. See page 4 for descriptions of the referenced projects below.



*The actual order and duration of projects continues to be refined and is subject to change.

Forecast Cost Summary

The graph below illustrates the projected WWSP cash flow by fiscal year (FY July 1 to June 30)*. The cumulative cash flow establishes the budgeted \$1.2 billion, which accounts for actual and current projected costs, including projected escalation in the cost of labor, materials, and equipment required to build the projects that comprise the WWSP.



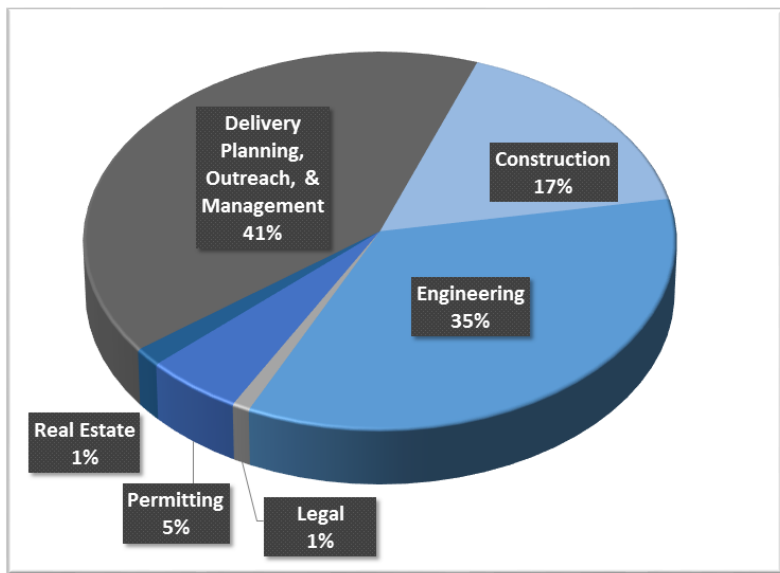
Forecasted costs for FY 2017 are \$31 million. Cumulative costs are projected to be \$50 million through the end of FY 2017.

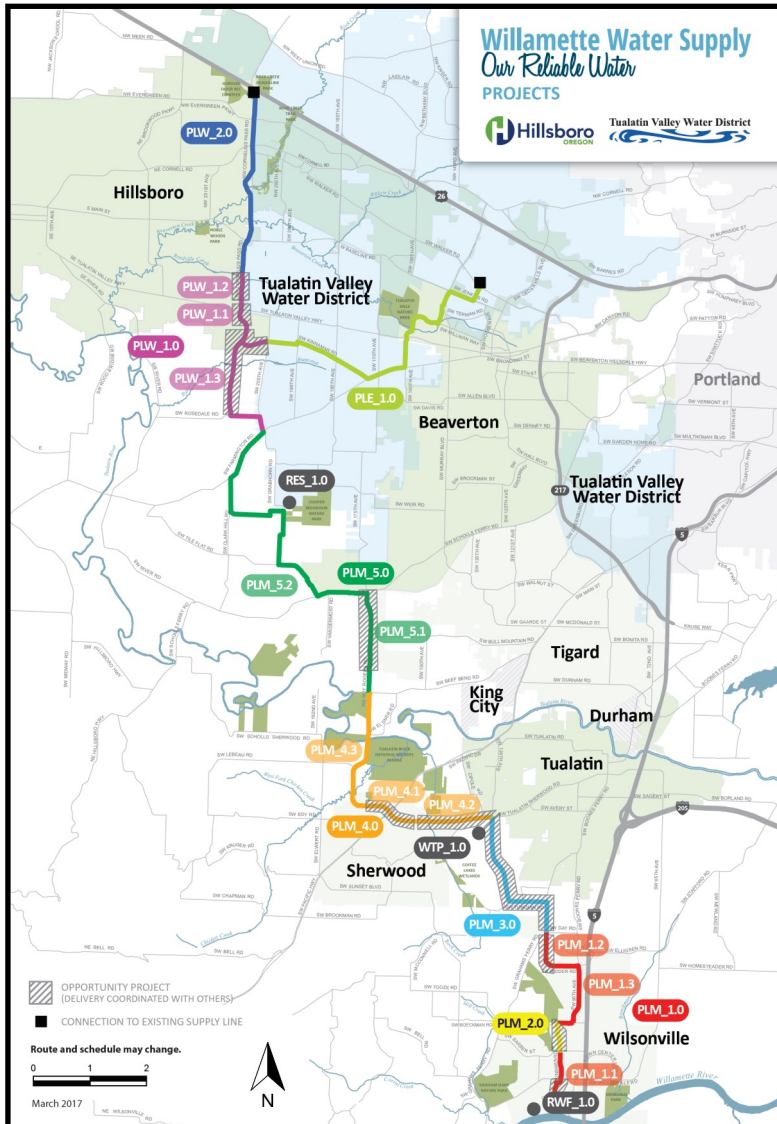
*Data continues to be refined and is subject to change.

Cumulative Cost Summary

WWSP cumulative costs are tracked and updated monthly. The pie chart below summarizes the distribution of cumulative costs through March 2017.

Cumulative water supply costs to date are approximately \$34 million, with the majority spent on planning, engineering, and construction activities.





PLW_2.0 Cornelius Pass Pipeline Project
(Frances Road to Highway 26)

Description: 3.4-mile water pipeline along Cornelius Pass Rd. from Frances Rd. to Hwy 26; connects to existing supply lines for City of Hillsboro and TVWD.

Status: Planning Phase (Design Start: 07/2020)

PLW_1.0 South Hillsboro Area Pipeline Project
(Farmington Road to Frances Road)

Description: 3.9-mile water pipeline from SW Farmington Rd. at SW 209th Ave. to Cornelius Pass Rd. at Frances Rd.; also east on Kinnaman Rd. between Cornelius Pass Rd. and SW 209th Ave.

Status: Design and Construction Phases (Construction Complete: 09/2017 Phase 1)

PLE_1.0 Beaverton Area Pipeline Project
(SW 209th Avenue to Walker Road)

Description: 5.5-mile water pipeline from SW 209th Ave. at Kinnaman Rd. to SW Cedar Hills Blvd.; connects to existing TVWD system.

Status: Planning Phase (Design Start: 01/2018)

RES_1.0 South Beaverton Area Water Storage Tanks (Storage Tanks)

Description: Two 15-million gallon storage tanks located in the Cooper Mountain area.

Status: Planning Phase (Design Start: 10/2020)

PLM_5.0 Scholls Area Pipeline Project
(Beef Bend Road to Farmington)

Description: 7.7-mile water pipeline from SW Roy Rogers Rd. at SW Beef Bend Rd. to SW Farmington Rd. at SW 209th Ave.

Status: Design Phase (Construction Start: 03/2018 Phase 1)

PLM_4.0 Tualatin-Sherwood Area Pipeline Project
(SW 124th Avenue to Beef Bend Road)

Description: 4.8-mile water pipeline from 124th Ave. at SW Tualatin Sherwood Rd. to SW Roy Rogers Rd. at SW Beef Bend Rd.

Status: Design Phase (Construction Start: 02/2019 Phase 1)

PLM_3.0 124th Avenue Partnership Project
(SW 124th Avenue Extension)

Description: 2.7-mile water pipeline from Grahams Ferry Rd. at Day Rd. to 124th Ave. at SW Tualatin Sherwood Rd.

Status: Construction Phase (Complete: 12/2018)

PLM_2.0 Kinsman Road Partnership Project
(Kinsman Road Extension)

Description: 0.5-mile water pipeline along Kinsman Rd. between Barber Rd. and Boeckman Rd.

Status: Construction Phase (Complete: 06/2018)

PLM_1.0 Wilsonville Area Pipeline Project
(WTP to Day Road)

Description: 3.0-mile water pipeline from Willamette River Water Treatment Plant to the intersection of SW Garden Acres Rd. at Day Rd.

Status: Planning Phase (Design Start: 06/2017 Phases 1 & 2)

WTP_1.0 Willamette Water Supply System Water Treatment Plant
(Water Treatment Plant (WTP))

FPS_1.0 *Description:* 60 million gallon per day water treatment plant (WTP_1.0), including a finished water pump station (FPS_1.0) and a control system (DCS_1.0) located near Sherwood.

DCS_1.0 *Status:* Planning Phase (Design Start: 02/2020)

RWF_1.0 Raw Water Facilities Expansion
(Raw Water Facilities (RWF) Expansion)

Description: Expansion of the existing raw water pump station and intake infrastructure at the Willamette River WTP in Wilsonville to 60 million gallons per day of initial capacity for the Willamette Water Supply System.

Status: Planning Phase (Design Start: 10/2017)

For more information about the WWSP, visit www.ourreliablewater.org or call 503.941.4570.