

Our Future Water Supply

Tualatin Valley Water District (TVWD) and the City of Hillsboro, collectively referred to as the Partners, have identified the Willamette Water Supply System as the best option for future delivery of drinking water to their service areas in Washington County. Development of the Willamette Water Supply System is being led by the Partners. Other water providers in the region are also looking at their options for future participation. The mid-Willamette River at Wilsonville will be the new water supply source for the Willamette Water Supply System. Although current demands are met through other sources, the addition of a new source will provide improved water supply reliability and system resiliency. Developing an additional water supply through a partnership supports the region's plans for responsible growth within the urban growth boundary.

Willamette Water Supply

Monthly Progress Report

Our Reliable Water

Month End February 2017

Updates on Active Construction Projects

Kinsman Road Partnership Project: a 0.5-mile pipeline that is being installed while the City of Wilsonville is extending Kinsman Rd. to improve the roadway grid system west of I-5. Through the end of February 2017, about 2,400 feet of the 2,960 feet of 66-inch diameter pipe have been installed. Installation will continue through spring 2017, with construction of the waterline components occurring through 2017.

124th Avenue Partnership Project: a 2.7-mile pipeline and new roadway project located in Washington County from SW Garden Acres Rd. to Tualatin-Sherwood Rd. It will improve regional mobility and provide access to future commercial and industrial lands. Pipe fabrication for the initial 1.5 miles of pipeline is complete with the pipe ready for installation. It will be installed as part of Washington County's SW 124th Avenue Extension Project. Road/pipeline work is scheduled for completion by the fall of 2018.

South Hillsboro Area Pipeline Project: Phase 1 includes installation of 2,439 feet of 48-inch diameter pipeline under the Cornelius Pass/Tualatin Valley Hwy. intersection and continue south through a portion of Reed's Crossing. On February 1, 2017, Limited Notice to Proceed was issued to begin pre-construction activities. Mobilization to the site occurred in February and pipeline construction is anticipated to start in March 2017. Construction of Phase 1 is expected to be complete by late 2017.



Kinsman Road Partnership Project pipeline looking north on future Kinsman

Agency Coordination

Willamette Water Supply Program (WWSP) staff coordinate closely with Federal, State, and local agencies. This staff coordination with these agencies improves water facility design, helps minimize conflicts with other infrastructure projects, reduces environmental effects, and ultimately saves money. For example, in 2016, WWSP staff worked closely with City of Beaverton staff and property owners to select a preferred route for the pipeline through Beaverton, from Millikan Way to Walker Rd. By working together, Beaverton and WWSP staff were able to realize benefits, efficiencies, and minimize impacts to local property owners and coordinate with other infrastructure projects.

These proactive coordination activities are a critical element to planning and delivering successful projects and programs for every entity involved.

Procurement & Business Opportunities

WWSP staff are preparing for several upcoming professional services and construction contractor procurements. A procurement forecast schedule is featured in this section of the monthly report. Listed below are active procurements and upcoming events and procurements. Procurement opportunities are also published at <http://www.ourreliablewater.org/business-opportunities>.

Active Procurements

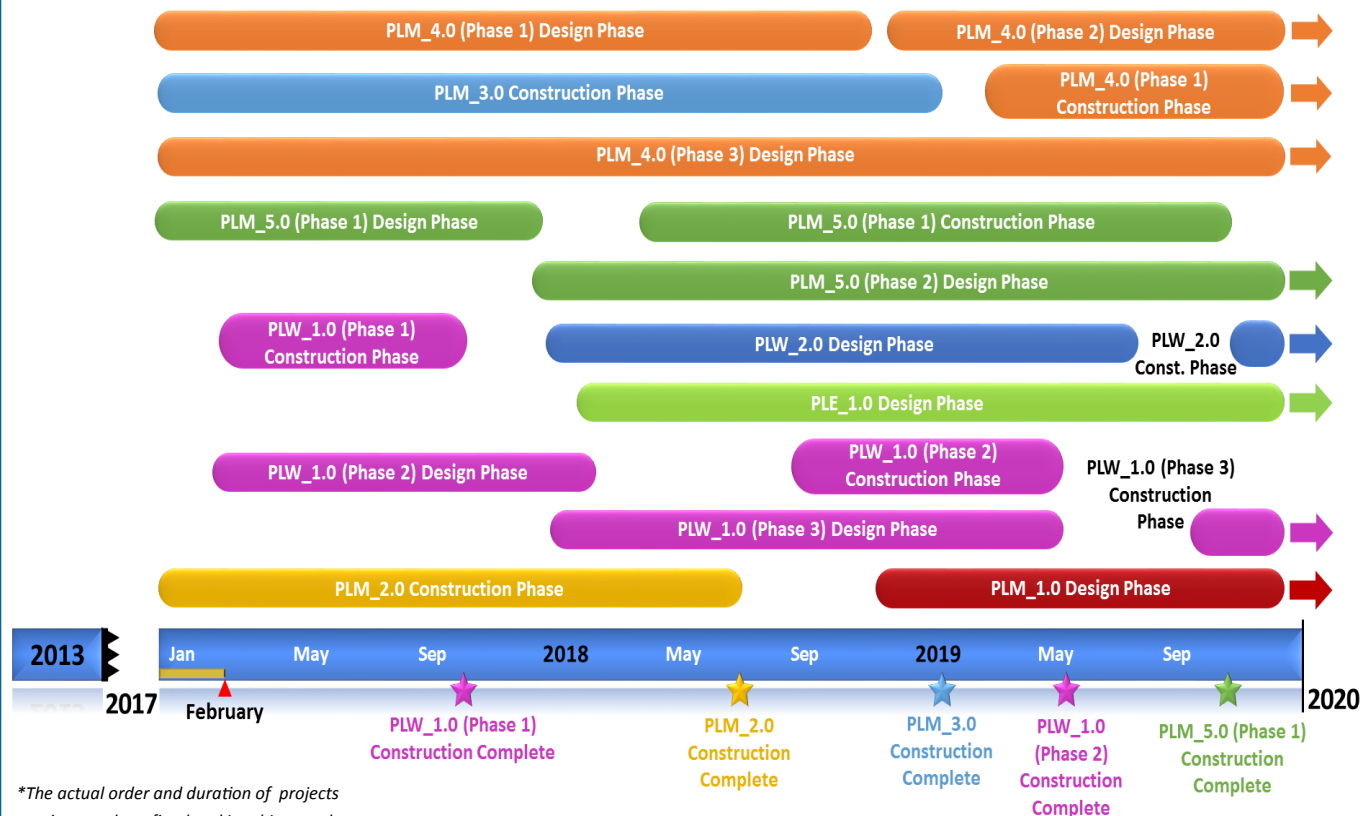
- None

Upcoming Procurements

- Additional significant procurements are being considered for acceleration due to shifting WWSP priorities
- Request for Proposal (RFP) for program survey services (Quarter 2, 2017)
- RFP for program legal services (Quarter 2, 2017)

Schedule Summary

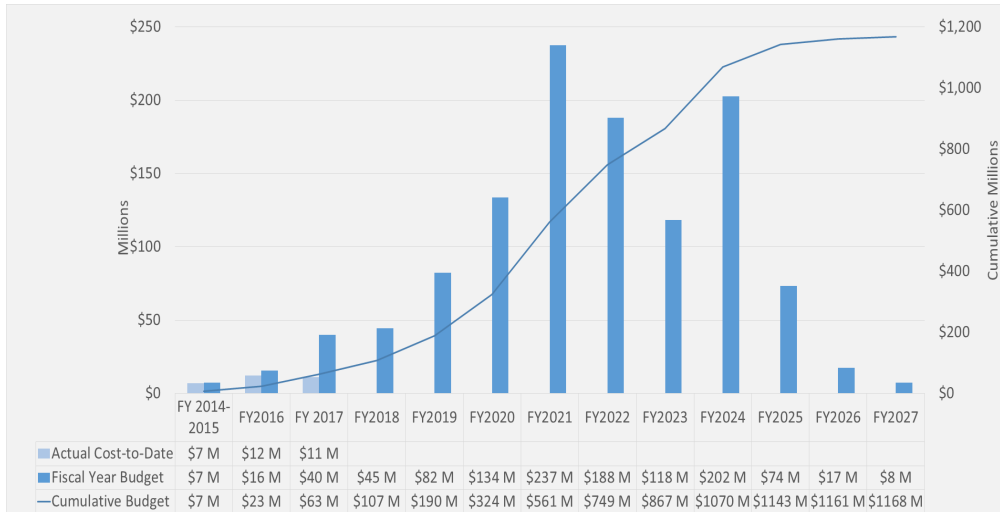
WWSP design and planning began in 2013; the WWSP is expected to be in service by July 2026. Below are the major milestones and activities forecasted from 2017 to 2020*. The WWSP team is committed to on-time delivery. See page 4 for descriptions of the referenced projects below.



*The actual order and duration of projects continues to be refined and is subject to change.

Forecast Cost Summary

The graph below illustrates the projected WWSP cash flow by fiscal year (FY July 1 to June 30)*. The cumulative cash flow establishes the budgeted \$1.2 billion, which accounts for actual and current projected costs, including projected escalation in the cost of labor, materials, and equipment required to build the projects that comprise the WWSP.



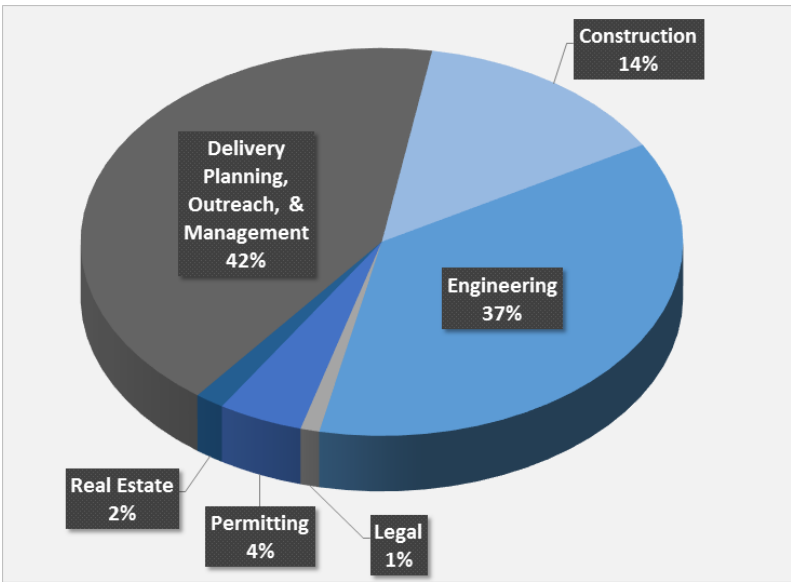
Forecasted costs for FY 2017 are \$40 million. Cumulative costs are projected to be \$63 million through the end of FY 2017.

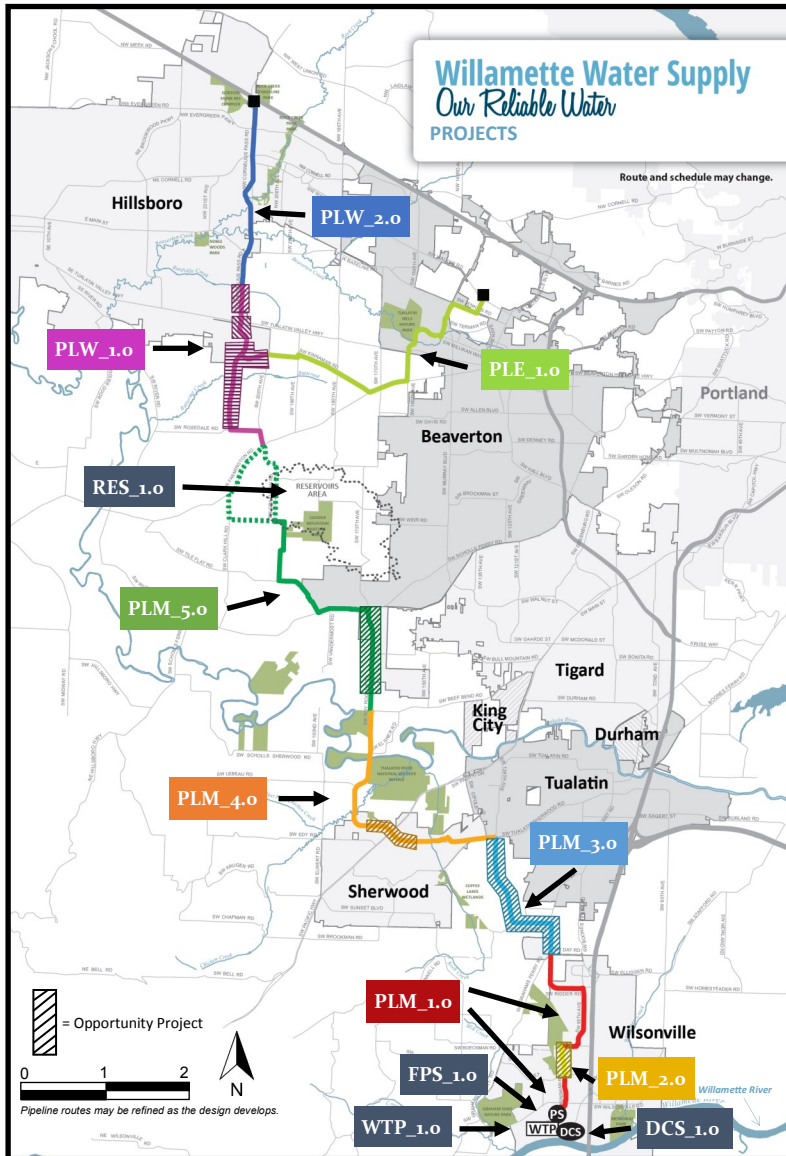
*Data continues to be refined and is subject to change.

Cumulative Cost Summary

WWSP cumulative costs are tracked and updated monthly. The pie chart below summarizes the distribution of cumulative costs through January 2017.

Cumulative water supply costs to date are approximately \$30 million, with the majority spent on planning, engineering, and construction activities.





PLW_2.0 Cornelius Pass Pipeline Project
(Frances Road to Highway 26)

Description: 3.4-mile water pipeline along Cornelius Pass Rd. from Frances Rd. to Hwy 26; connects to existing supply lines for City of Hillsboro and TVWD.

Status: Planning Phase (Design Start: 12/2017)

PLW_1.0 South Hillsboro Area Pipeline Project
(Farmington Road to Frances Road)

Description: 3.9-mile water pipeline from SW Farmington Rd. at SW 209th Ave. to Cornelius Pass Rd. at Frances Rd.; also east on Kinnaman Rd. between Cornelius Pass Rd. and SW 209th Ave.

Status: Design and Construction Phases (Construction Start: 02/2017 Phase 1)

PLE_1.0 Beaverton Area Pipeline Project
(SW 209th Avenue to Walker Road)

Description: 5.5-mile water pipeline from SW 209th Ave. at Kinnaman Rd. to SW Cedar Hills Blvd.; connects to existing TVWD system.

Status: Planning Phase (Design Start: 01/2018)

RES_1.0 South Beaverton Area Water Storage Tanks (Storage Tanks)

Description: Two 15-million gallon storage tanks located in the Cooper Mountain area.

Status: Planning Phase (Design Start: 06/2020)

PLM_5.0 Scholls Area Pipeline Project
(Beef Bend Road to Farmington)

Description: 7.2-mile water pipeline from SW Roy Rogers Rd. at SW Beef Bend Rd. to SW Farmington Rd. at SW 209th Ave. A partial alternate route is under consideration.

Status: Design Phase (Construction Start: 03/2018 Phase 1)

PLM_4.0 Tualatin-Sherwood Area Pipeline Project
(SW 124th Avenue to Beef Bend Road)

Description: 4.8-mile water pipeline from 124th Ave. at SW Tualatin Sherwood Rd. to SW Roy Rogers Rd. at SW Beef Bend Rd.

Status: Design Phase (Construction Start: 02/2019)

PLM_3.0 124th Avenue Partnership Project
(SW 124th Avenue Extension)

Description: 2.7-mile water pipeline from Grahams Ferry Rd. at Day Rd. to 124th Ave. at SW Tualatin Sherwood Rd.

Status: Construction Phase (Complete: 12/2018)

PLM_2.0 Kinsman Road Partnership Project
(Kinsman Road Extension)

Description: 0.5-mile water pipeline along Kinsman Rd. between Barber Rd. and Boeckman Rd.

Status: Construction Phase (Complete: 06/2018)

PLM_1.0 Wilsonville Area Pipeline Project
(WTP to Day Road)

Description: 3.0-mile water pipeline from Willamette River Water Treatment Plant to the intersection of SW Garden Acres Rd. at Day Rd.

Status: Planning Phase (Design Start: 11/2018)

Willamette River Water Treatment Plant Expansion

WTP_1.0 (Water Treatment Plant (WTP) Expansion)

FPS_1.0 *Description:* 60 million gallon per day expansion of existing Willamette River Water Treatment Plant (WTP_1.0), including a finished water pump station (FPS_1.0) and control system (DCS_1.0) located on Arrowhead Creek Ln.

DCS_1.0

Status: Planning Phase (Design Start: 02/2020)

For more information about the WWSP, visit www.ourreliablewater.org or call 503.941.4570. This is a monthly progress report. Previous reports can be found at the WWSP website.