

Our Future Water Supply

Tualatin Valley Water District (TVWD) and the City of Hillsboro, collectively referred to as the Partners, have identified the Willamette Water Supply System (WWSS) as the best option for future delivery of drinking water to their service areas in Washington County. Development of the WWSS is being led by the Partners. Other water providers in the region are also looking at their options for future participation. The mid-Willamette River at Wilsonville will be the new water supply source for the WWSS. Although current demands are met through other sources, the addition of a new source will provide improved water supply reliability and system resiliency. Developing an additional water supply through a partnership supports the region's plans for responsible growth within urban grown boundaries.

Willamette Water Supply

Our Reliable Water

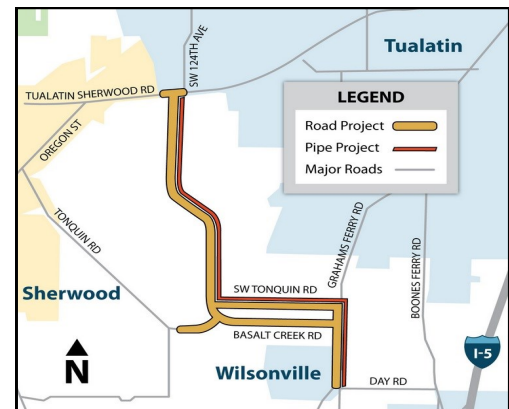
Monthly Progress Report

March 2016

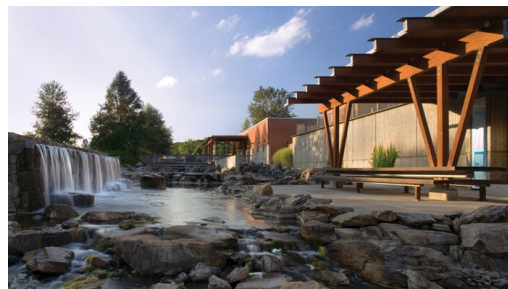
124th Avenue Partnership Project

The first section of Willamette Water Supply Program (WWSP) pipeline, located in Washington County from SW Garden Acres Rd. to Tualatin-Sherwood Rd., will be installed as part of Washington County's SW 124th Avenue Extension Project. Washington County is extending 124th Ave. south from Tualatin-Sherwood Rd. to improve regional mobility and provide access to future commercial and industrial lands between Tualatin and Sherwood. In February, Kerr Contractors, Inc., the main construction contractor on the project, submitted pre-construction planning documents. Washington County continued work to obtain regulatory permits to allow on-site construction activities to begin as planned. The design and construction management teams from WWSP and Washington County

continued regular coordination to prepare for successful project delivery. In March, Washington County held a pre-construction conference and a public "Meet the Contractor" event. Construction of the 2.7-mile pipeline and new roadway will begin this spring and is scheduled for completion by 2018.



Blue Ribbon Panel Review



As part of the WWSP, a Master Plan is being prepared to identify the preferred approach for expanding the Willamette River Water Treatment Plant (WRWTP) (pictured above). The existing plant has an exceptional performance record, having met all applicable water quality standards for more than 12 years. The master planning process includes a review of the existing design and operational criteria to determine if any changes are recommended. A Blue Ribbon Panel was assembled to review and verify that fundamental steps are being

enacted in the WRWTP Master Planning process for continued public health protection. The six distinguished panelists, each with a Ph.D., possess expertise in public health protection, water quality, engineering, and water treatment technology. The panel was facilitated by the CEO of a major municipal water agency and former regional administrator for the Environmental Protection Agency. As part of the panel review, a two-day workshop was held where the panel was led through the WWSP's goals and needs of the WRWTP Master Plan and provided analysis and recommendations for how those goals and needs could be met. In February, the Blue Ribbon Panel developed, reviewed, and refined a comprehensive report of their findings and recommendations. WWSP continued preparing to incorporate the panel's input into the WRWTP Master Plan.

Procurement / Business Opportunities

WWSP staff are preparing for several professional services and construction contractor procurements in the upcoming year. For this effort, the team is developing a procurement forecast schedule that will be featured in this section of the monthly report. In addition, business outreach events will be scheduled and hosted by WWSP to communicate opportunities for businesses to support delivery of the WWSP. We are committed to providing local jobs and helping support the local economy. Check back here periodically or visit our website www.ourreliablewater.org for future events and procurements and discover how the WWSP is benefitting the local economy.

Listed below are active procurements and upcoming events and procurements for 2016.

Active Procurements

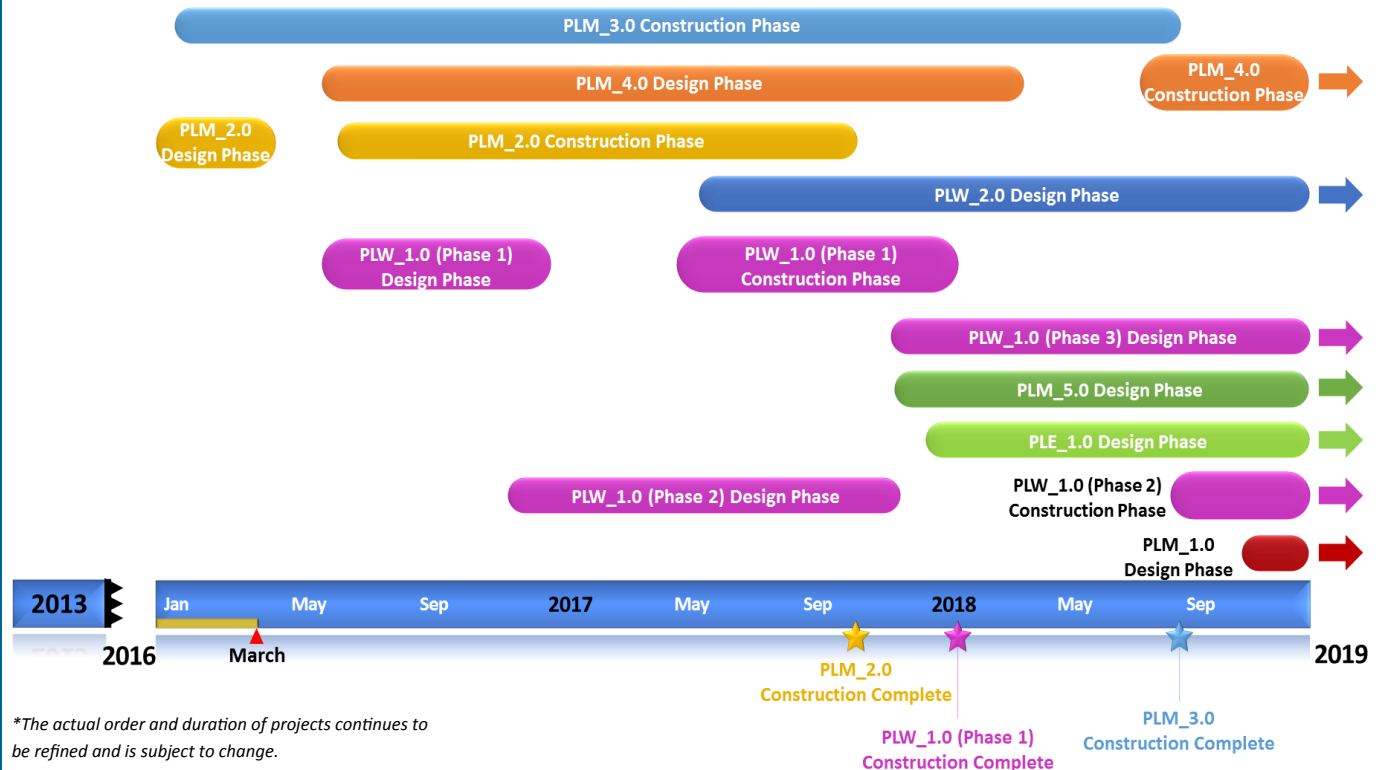
- Tualatin-Sherwood Area Pipeline Project (PLM_4.0) design consultant services
- South Hillsboro Area Pipeline (PLW_1.0) design consultant services

Upcoming Events & Procurements

- Request for Qualifications (RFQ) for pipeline construction contractors (Quarter 2 or 3 2016)
- Request for Proposal (RFP) for land surveying support services (Quarter 2 or 3 2016)

Schedule Summary

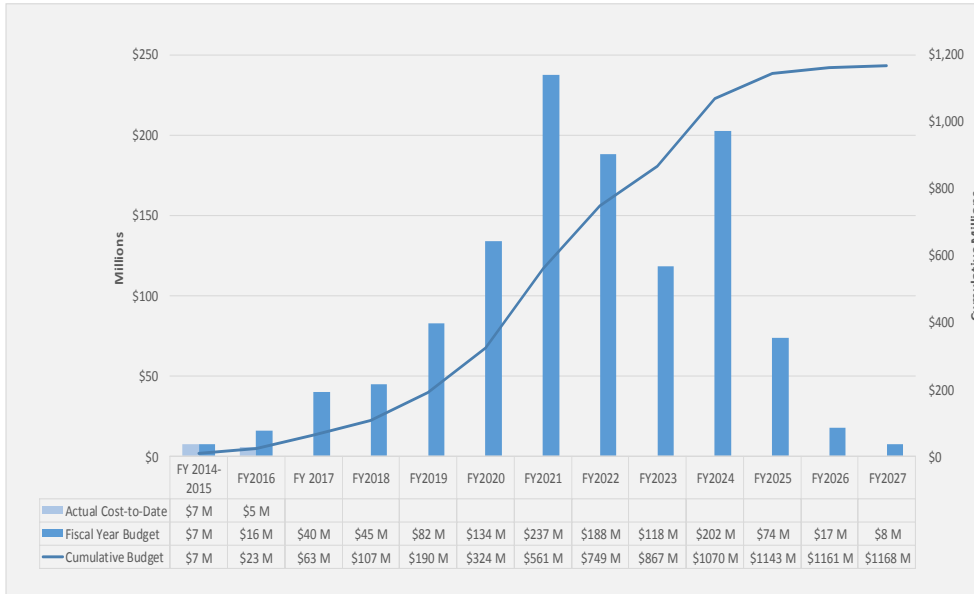
Work on the WWSP design and planning began in 2013 and WWSP is expected to be in service by July 2026. Below are the major milestones and activities completed and forecasted on the WWSP from 2016-2019*. The WWSP team is committed to on-time delivery. See page 4 for descriptions of the referenced projects below.



*The actual order and duration of projects continues to be refined and is subject to change.

Forecast Cost Summary

The graph below illustrates the projected cash flow by fiscal year (FY July 1 - June 30) for WWSP*. The cumulative cash flow establishes the budgeted \$1.2 billion, which accounts for actual and currently projected costs, including projected escalation in the cost of labor, materials, and equipment required to build the project.



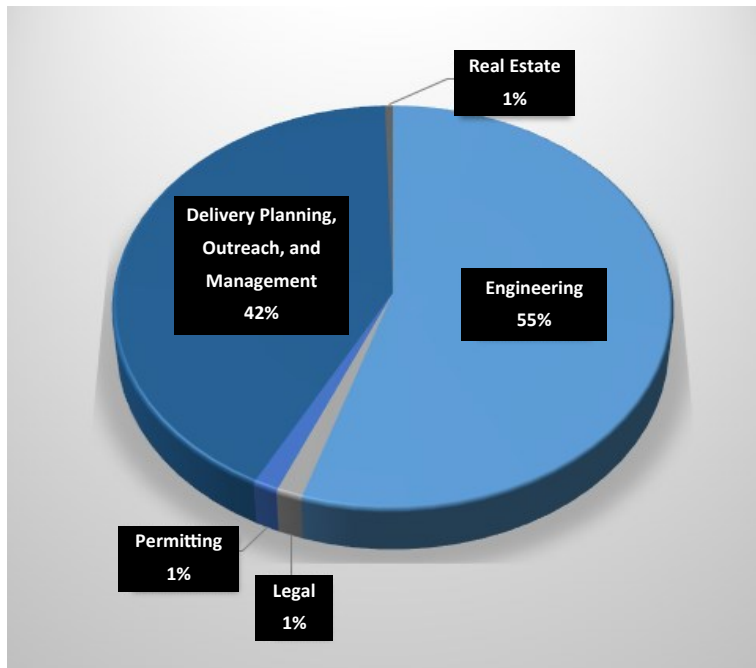
Forecasted costs for FY 2016 are \$16 million. Total Program costs are projected to be \$23 million through the end of FY 2016.

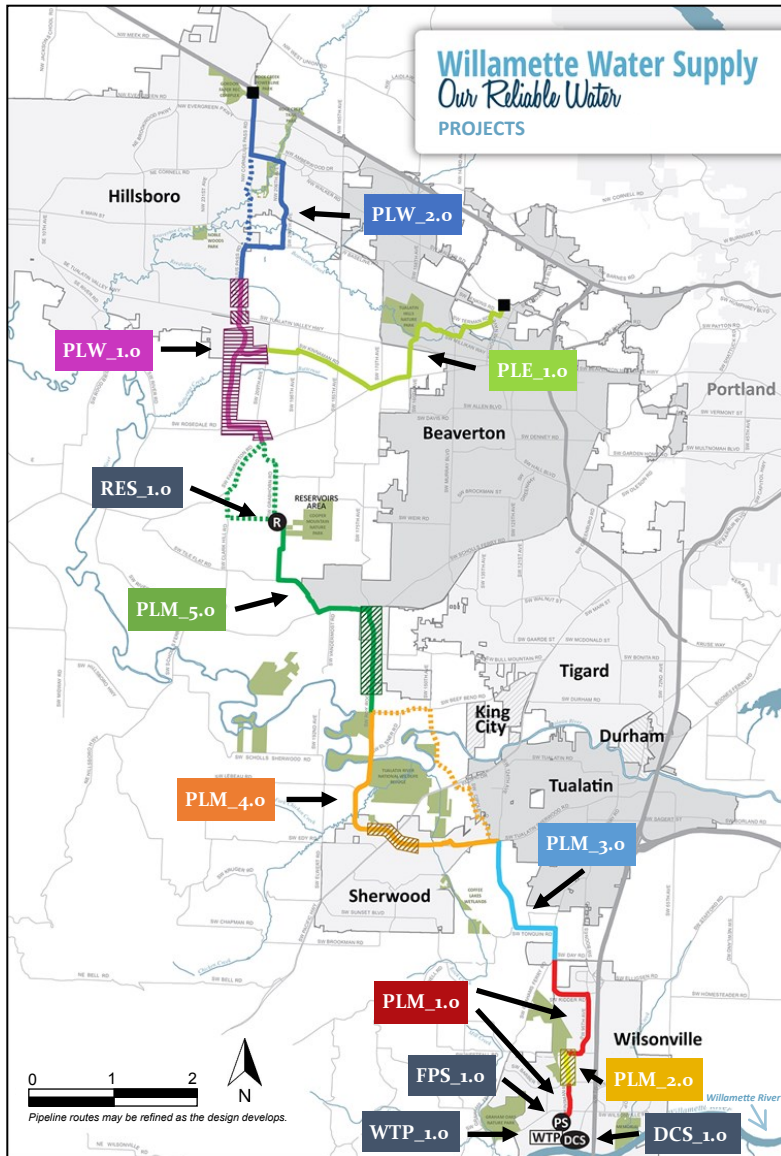
*Data continues to be refined and is subject to change.

Actual Cost Summary

Actual costs for the WWSP are tracked and updated monthly. The pie chart below summarizes the distribution of actual costs through February 2016.

Cumulative actual costs to date are approximately \$12 million, with a majority spent on planning and engineering activities.





- WTP_1.0** **Willamette River Water Treatment Plant Expansion**
(Water Treatment Plant (WTP) Expansion)
- FPS_1.0** *Description:* 60 million gallon per day expansion of existing Willamette River Water Treatment Plant (WTP_1.0), including a finished water pump station (FPS_1.0) and control system (DCS_1.0) located on Arrowhead Creek Ln.
- DCS_1.0** *Status:* Planning Phase (Design Start: 02/2020)

For more information about the WWSP, visit www.ourreliablewater.org or call 503.941.4570.

This is a monthly progress report. Previous reports can be found at www.ourreliablewater.org.

PLW_2.0 **Cornelius Pass Pipeline Project**
(Frances Road to Highway 26)
Description: 4.4-mile water pipeline from Cornelius Pass Rd. at Frances Rd. to Cornelius Pass Rd. at Hwy 26; connects to existing supply lines for City of Hillsboro and TVWD. A partial alternate route is under consideration.
Status: Planning Phase (Design Start: 06/2017)

PLW_1.0 **South Hillsboro Area Pipeline Project**
(Farmington Road to Frances Road)
Description: 3.9-mile water pipeline from SW Farmington Rd. at SW 209th Ave. to Cornelius Pass Rd. at Frances Rd.; also east from Cornelius Pass at Kinnaman Rd. to Kinnaman Rd. at 209th Ave.
Status: Planning Phase (Design Start: 06/2016)

PLE_1.0 **Beaverton Area Pipeline Project**
(SW 209th Avenue to Walker Road)
Description: 1.9-mile water pipeline from SW 209th Ave. at Kinnaman Rd. to SW Cedar Hills Blvd.; connects to existing TVWD system.
Status: Planning Phase (Design Start: 01/2018)

RES_1.0 **South Beaverton Area Water Storage Tanks (Storage Tanks)**
Description: Two 15-million gallon storage tanks located in the Cooper Mountain area.
Status: Planning Phase (Design Start: 05/2019)

PLM_5.0 **Scholls Area Pipeline Project**
(Beef Bend Road to Farmington)
Description: 7.2-mile water pipeline from SW Roy Rogers Rd. at SW Beef Bend Rd. to SW Farmington Rd at SW 209th Ave. A partial alternate route is under consideration.
Status: Planning Phase (Design Start: 12/2017)

PLM_4.0 **Tualatin-Sherwood Area Pipeline Project**
(SW 124th Avenue to Beef Bend Road)
Description: 4.8-mile water pipeline from 124th Ave. at SW Tualatin Sherwood Rd. to SW Roy Rogers Rd. at SW Beef Bend Rd.
Status: Planning Phase (Design Start: 06/2016)

PLM_3.0 **124th Avenue Partnership Project**
(SW 124th Avenue Extension)
Description: 2.7-mile water pipeline from SW Garden Acres Rd. at Day Rd. to 124th Ave. at SW Tualatin Sherwood Rd.
Status: Construction Phase (Complete: 09/2018)

PLM_2.0 **Kinsman Road Partnership Project**
(Kinsman Road Extension)
Description: 0.5-mile water pipeline from Kinsman Rd. at Barber Rd. to Kinsman Rd. at Boeckman Rd.
Status: Design Phase (Construction Bid: 05/2016)

PLM_1.0 **Wilsonville Area Pipeline Project**
(WTP to Day Road)
Description: 3.0-mile water pipeline from WWSP WTP to intersection of SW Garden Acres Rd. at Day Rd.
Status: Planning Phase (Design Start: 10/2018)