

Water Treatment Plant

Tualatin Valley Water District (TVWD), the City of Hillsboro and the City of Beaverton are developing the Willamette Water Supply System. The new system will draw water from the mid-Willamette River at Wilsonville and, once treated, deliver it to their customers. The Willamette Water Supply Program is being funded by TVWD, Hillsboro and Beaverton ratepayers.

Plant Location and Capacity

Construction of a new, seismically resilient water treatment plant (WTP) is essential to the new water system. It will be located in the [Tonquin Employment Area](#) near the intersection of SW 124th Avenue and SW Tualatin-Sherwood Road. The site is within the Urban Growth Boundary and the City of Sherwood.

In addition to playing a critical role in improving the region's ability to recover after a large earthquake, other benefits include:

- Improving travel for the public—by building a new east-west road crossing 124th Avenue that connects Tualatin and Sherwood
- Enhancing emergency preparedness—by creating an emergency facility capable of producing drinking water for emergency responders and the community within 48 hours of a major seismic event
- Providing educational opportunities—through a public overlook of a preserved natural area, and other educational features

The WTP will occupy about 20 acres. Approximately 20 additional acres are earmarked for roadway improvements, setbacks and habitat preservation. The site meets several important criteria including that it is geologically stable, is slated for future development, is of adequate size, and allows opportunities to conserve wetland and upland habitat. The stable soils on this site mean the WTP will have superior seismic resiliency and will be better able to withstand a catastrophic natural disaster.

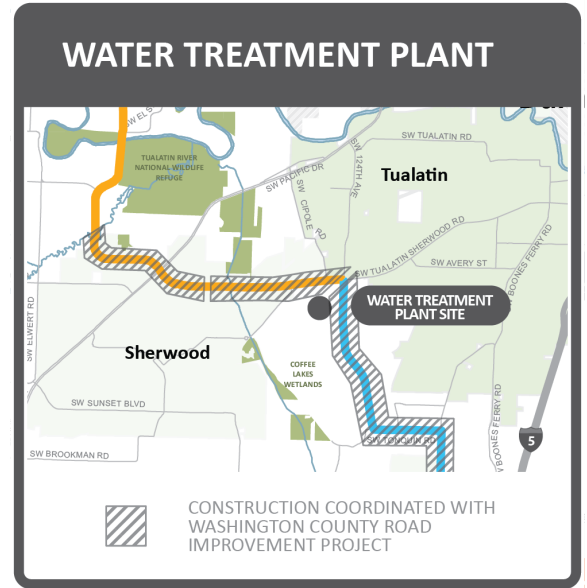
The new WTP will initially produce up to 60 million gallons of water per day (mgd) but will be designed for a maximum of 120 mgd.

Water Treatment Process

The new WTP will be designed to utilize similar processes as another plant utilizing the same source water, the existing Willamette River Water Treatment Plant (WRWTP), which has been delivering safe and reliable water to Wilsonville and Sherwood residents since April 2002. The new WTP will [utilize multiple treatment steps](#) to meet drinking water standards including enhanced coagulation sedimentation, ozonation, ultraviolet light, granulated activated carbon, sand filtration, and chlorine disinfection (learn more at www.ourreliablewater.org/quality-water-after-filtration)

Timeline

Design and permitting is underway. Construction is anticipated to begin around 2022, with the plant beginning operations in 2026.

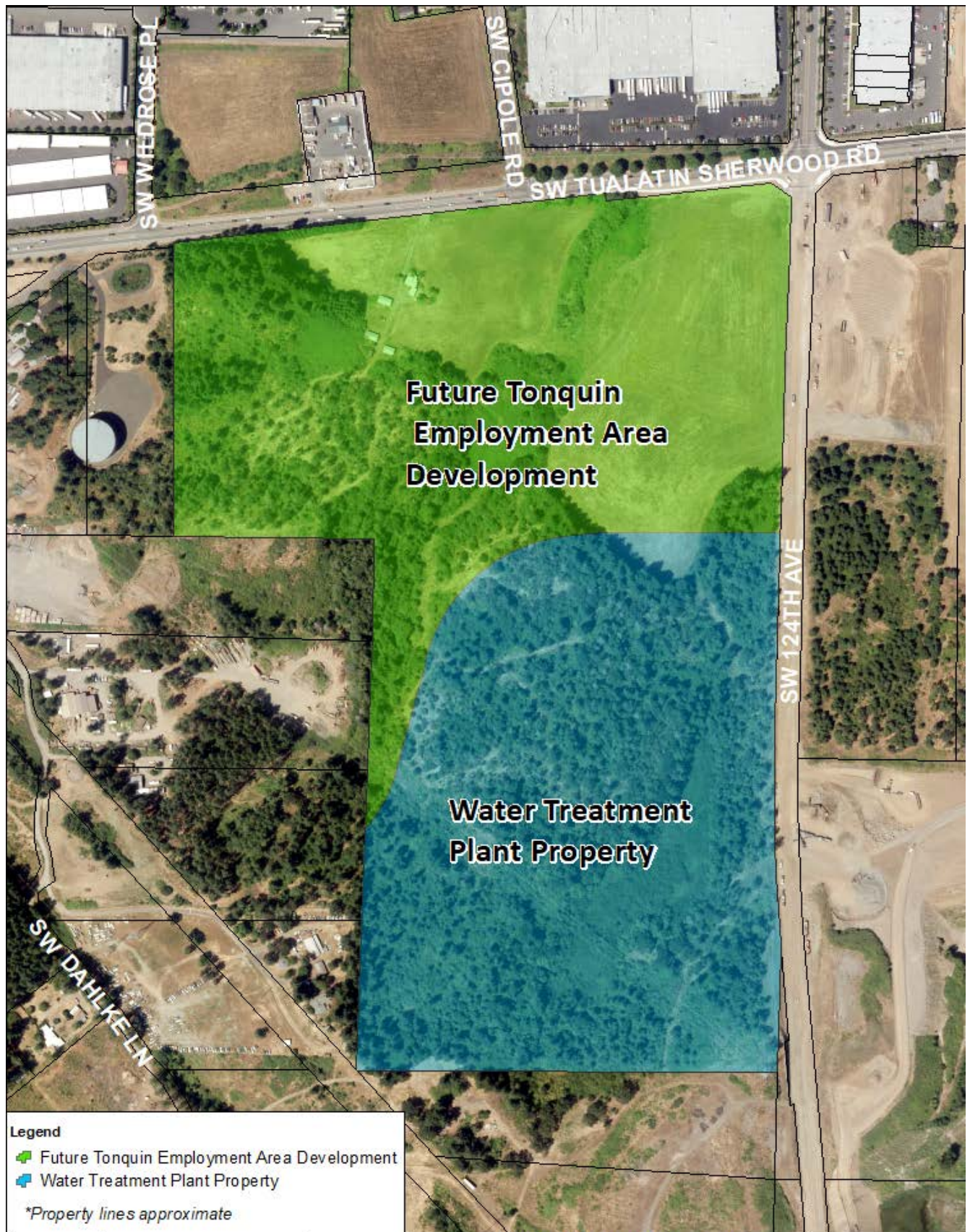


Learn More



OurReliableWater.org

503-941-4570

info@ourreliablewater.org



Legend

-  Future Tonquin Employment Area Development
-  Water Treatment Plant Property

**Property lines approximate*

