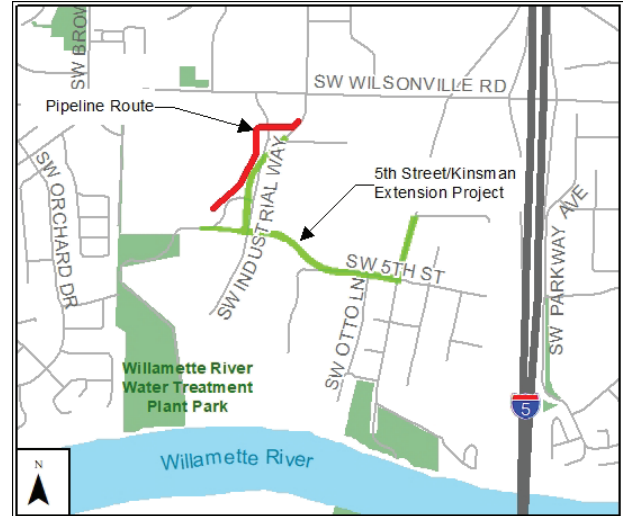


Wilsonville Area Pipeline Project

The Willamette Water Supply Program (WWSP) is coordinating with the City of Wilsonville to construct a water pipeline and other transportation improvements near the 5th Street/Kinsman Road Extension Project. Phase 1 of pipeline construction is planned to begin in the summer of 2019, with completion anticipated in 2020. Construction will likely begin at the south end of the project area near Arrowhead Creek Lane and conclude on Kinsman Road just south of Wilsonville Road.



Preliminary pipeline route is subject to change.

About the Willamette Water Supply Program

The Tualatin Valley Water District (TVWD) and the City of Hillsboro are partnering to build the WWSP, an additional, seismically resilient water supply for Washington County. The new system will be completed in 2026. TVWD and City of Hillsboro customers will pay for WWSP facilities.

Learn More

OurReliableWater.org

503-941-4570

info@ourreliablewater.org

5th Street/Kinsman Extension project

503-682-4960

adams@ci.wilsonville.or.us

<https://www.ci.wilsonville.or.us/engineering/project/5th-streetkinsman-extension>

Our Future Water Supply

The Willamette Water Supply Program is a partnership between Tualatin Valley Water District and the City of Hillsboro to develop the mid-Willamette River at Wilsonville as an additional water supply source. This new system, when operational in 2026, will provide a reliable water supply for the region by helping water system operators balance supply during times of drought or other supply interruptions, as well as recover more quickly after a large natural disaster.