

Our Future Water Supply

Tualatin Valley Water District (TVWD) and the City of Hillsboro, collectively referred to as the Partners, have identified the Willamette Water Supply System as the best option for future delivery of drinking water to their service areas in Washington County. Development of the Willamette Water Supply System is being led by the Partners. Other water providers in the region are also looking at their options for future participation. The mid-Willamette River at Wilsonville will be the new water supply source for the Willamette Water Supply System. Although current demands are met through other sources, the addition of a new source will provide improved water supply reliability and system resiliency. Developing an additional water supply through a partnership supports the region's plans for responsible growth within urban growth boundaries.

Willamette Water Supply

Our Reliable Water

Monthly Progress Report

Month End November 2016

WWSP on Social Media

The Willamette Water Supply Program (WWSP) is now active on Twitter and YouTube. These are important communication tools that allow the water supply team to engage directly with stakeholders and the public. These social media outlets provide an opportunity to share information about the program, including news, events, road impacts, progress updates, and information about milestones and achievements while allowing us to interact with and answer questions from followers. Water supply staff recently published a time lapse on [YouTube](#) of the first piece of WWSP pipe being placed. YouTube will enable us to post construction updates, interviews, and events. Twitter will be used to communicate information about program initiatives and progress.



Click on the links above to access the WWSP Twitter and YouTube channel. Go to our website at www.ourreliablewater.org, check out future monthly reports, or stay connected on Twitter and YouTube for WWSP facts and news.



Installation of pipe at the Kinsman Road Partnership Project

Permitting Progress



Location of new 124th Ave. and Tonquin Rd. intersection as part of the 124th Avenue Partnership Project

Constructing and operating the WWSP requires permits from various agencies at the Federal, State, and local levels. The WWSP team is currently utilizing the wetland delineations and other information gathered from

the recent field studies to develop a permit application to submit to Federal and State agencies in 2017. The permits issued by the U.S. Army Corps of Engineers, National Marine Fisheries Service, and Department of State Lands are important authorizations that will include environmental mitigation measures needed to complete the water supply system in compliance with Federal and State requirements. The WWSP team is also working closely with Federal, State, and local agencies to identify potential measures intended to conserve and improve high-value habitat in the vicinity of the proposed Willamette Water Supply System facilities.



Procurement / Business Opportunities

WWSP staff are preparing for several upcoming professional services and construction contractor procurements. For this effort, the team is maintaining a procurement forecast schedule that is featured in this section of the monthly report. Listed below are active procurements and upcoming events and procurements. Procurement opportunities are also published at <http://www.ourreliablewater.org/business-opportunities>.

Active Procurements

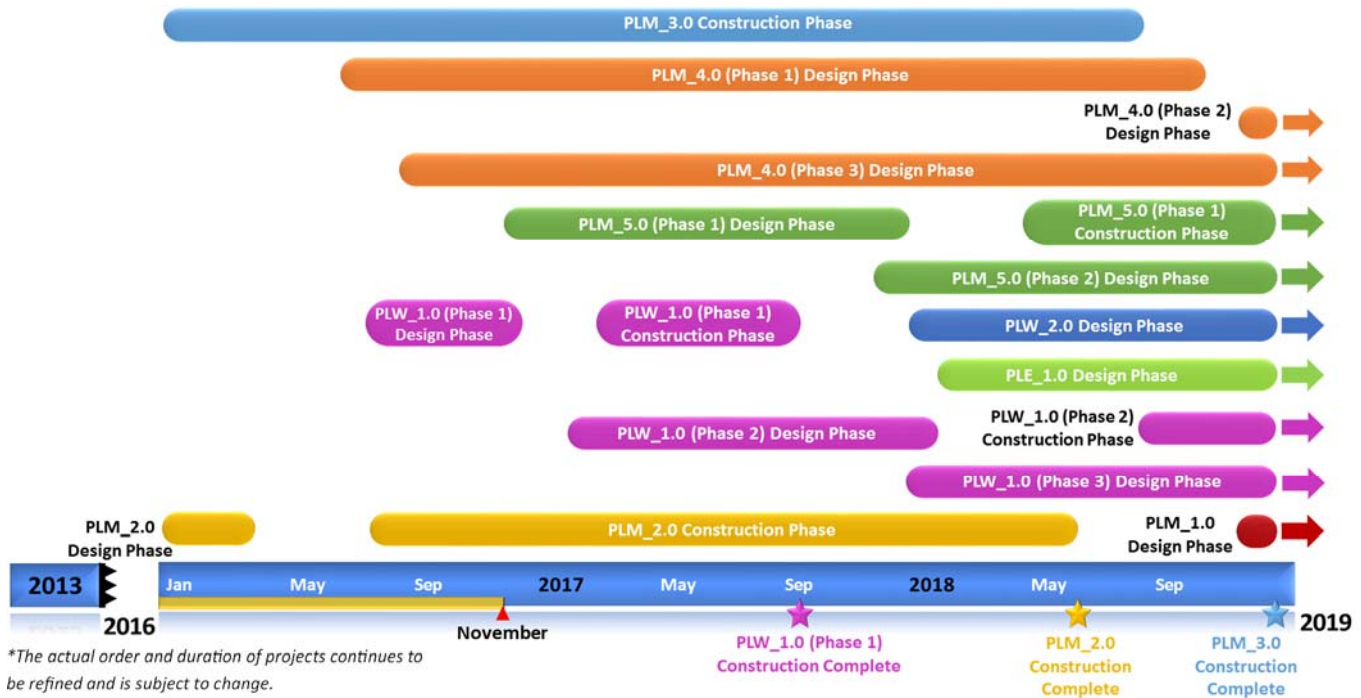
- Invitation to Bid for South Hillsboro Area Pipeline Project (PLW_1.0, Phase 1) pipeline construction contractor (advertised November 21, bids due December 22)

Upcoming Procurements

- Request for Quote for South Hillsboro Area Pipeline Project (PLW_1.0, Phase 1) third-party testing services (December 2016)
- Request for Proposal (RFP) for raw water facility physical modeling services (December 2016)
- RFP for Program land surveying support services (Quarter 1, 2017)
- RFP for Program hydraulic modeling services (Quarter 1, 2017)

Schedule Summary

WWSP design and planning began in 2013; the WWSP is expected to be in service by July 2026. Below are the major milestones and activities completed and forecasted from 2016-2019*. The WWSP team is committed to on-time delivery. See page 4 for descriptions of the referenced projects below.



Forecast Cost Summary

The graph below illustrates the projected WWSP cash flow by fiscal year (FY July 1 - June 30)*. The cumulative cash flow establishes the budgeted \$1.2 billion, which accounts for actual and current projected costs, including projected escalation in the cost of labor, materials, and equipment required to build the projects that comprise the WWSP.



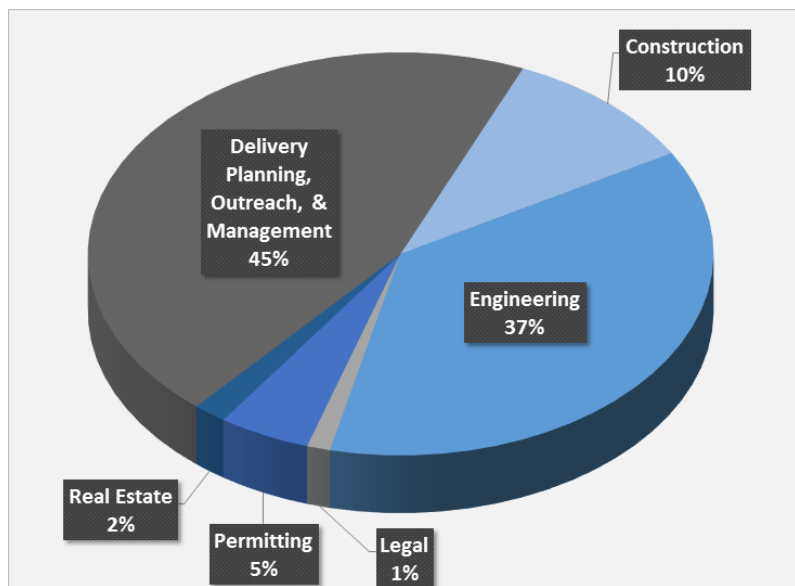
Forecasted costs for FY 2017 are \$40 million. Cumulative costs are projected to be \$63 million through the end of FY 2017.

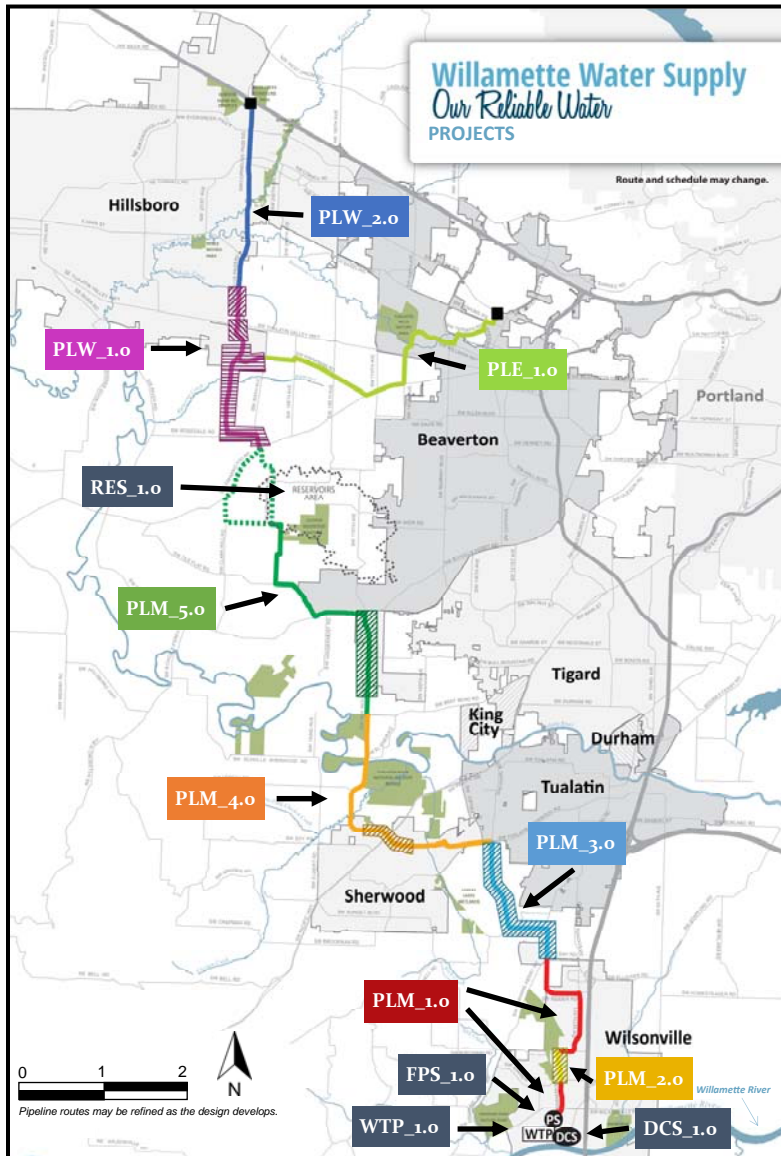
*Data continues to be refined and is subject to change.

Cumulative Cost Summary

WWSP cumulative costs are tracked and updated monthly. The pie chart below summarizes the distribution of cumulative costs through October 2016.

Cumulative water supply costs to date are approximately \$23 million, with the majority spent on planning, engineering, and construction activities.





PLW_2.0 Cornelius Pass Pipeline Project
(Frances Road to Highway 26)

Description: 3.4-mile water pipeline along Cornelius Pass Rd. from Frances Rd. to Hwy 26; connects to existing supply lines for City of Hillsboro and TVWD.

Status: Planning Phase (Design Start: 12/2017)

PLW_1.0 South Hillsboro Area Pipeline Project
(Farmington Road to Frances Road)

Description: 3.9-mile water pipeline from SW Farmington Rd. at SW 209th Ave. to Cornelius Pass Rd. at Frances Rd.; also east on Kinnaman Rd. between Cornelius Pass Rd. and 209th Ave.

Status: Design Phase (Construction Start: 02/2017)

PLE_1.0 Beaverton Area Pipeline Project
(SW 209th Avenue to Walker Road)

Description: 5.5-mile water pipeline from SW 209th Ave. at Kinnaman Rd. to SW Cedar Hills Blvd.; connects to existing TVWD system.

Status: Planning Phase (Design Start: 01/2018)

RES_1.0 South Beaverton Area Water Storage Tanks
(Storage Tanks)

Description: Two 15-million gallon storage tanks located in the Cooper Mountain area.

Status: Planning Phase (Design Start: 06/2020)

PLM_5.0 Scholls Area Pipeline Project
(Beef Bend Road to Farmington)

Description: 7.2-mile water pipeline from SW Roy Rogers Rd. at SW Beef Bend Rd. to SW Farmington Rd. at SW 209th Ave. A partial alternate route is under consideration.

Status: Planning Phase (Design Start: 11/2016)

PLM_4.0 Tualatin-Sherwood Area Pipeline Project
(SW 124th Avenue to Beef Bend Road)

Description: 4.8-mile water pipeline from 124th Ave. at SW Tualatin Sherwood Rd. to SW Roy Rogers Rd. at SW Beef Bend Rd.

Status: Design Phase (Construction Start: 03/2019)

PLM_3.0 124th Avenue Partnership Project
(SW 124th Avenue Extension)

Description: 2.7-mile water pipeline from Grahams Ferry Rd. at Day Rd. to 124th Ave. at SW Tualatin Sherwood Rd.

Status: Construction Phase (Complete: 08/2018)

PLM_2.0 Kinsman Road Partnership Project
(Kinsman Road Extension)

Description: 0.5-mile water pipeline along Kinsman Rd. between Barber Rd. and Boeckman Rd.

Status: Construction Phase (Complete: 06/2018)

PLM_1.0 Wilsonville Area Pipeline Project
(WTP to Day Road)

Description: 3.0-mile water pipeline from Willamette River Water Treatment Plant to the intersection of SW Garden Acres Rd. at Day Rd.

Status: Planning Phase (Design Start: 11/2018)

Willamette River Water Treatment Plant Expansion

WTP_1.0 (Water Treatment Plant (WTP) Expansion)

FPS_1.0 *Description:* 60 million gallon per day expansion of existing Willamette River Water Treatment Plant (WTP_1.0), including a finished water pump station (FPS_1.0) and control system (DCS_1.0) located on Arrowhead Creek Ln.

DCS_1.0

Status: Planning Phase (Design Start: 02/2020)

For more information about the WWSP, visit www.ourreliablewater.org or call 503.941.4570. This is a monthly progress report. Previous reports can be found at the WWSP website.